

SSC Selection Post (Graduation) Similar Paper (Held on 24 Jul 2025 S3)

Q.1 If $A = 6, B = 9, C = 12$, then find: $(A \times B) - C \div 3$?

- A. 50
- B. 52
- C. 54
- D. 56

Answer: A

Sol: Given: If $A = 6, B = 9, C = 12$, then find: $(A \times B) - C \div 3$?

Using **BODMAS** rule.

Operation preference wise	Symbol
Brackets	$[], , ()$
Orders, of	$(power), \sqrt{(root)}, of$
Division	\div
Multiplication	\times
Addition	$+$
Subtraction	$-$

New equation: $(6 \times 9) - 12 \div 3 = ?$

$54 - 12 \div 3 = ?$

$54 - 4 = ?$

$? = 50$

Thus, correct option is (a).

Q.2 What will come in place of the question mark?

1, 4, 9, 16, ?, 36

- A. 20
- B. 24
- C. 25
- D. 30

Answer: C

Sol: Given: 1, 4, 9, 16, ?, 36

Logic: Numbers are increasing perfect square of natural number from 1.

$1^2 = 1$

$2^2 = 4$

$3^2 = 9$

$4^2 = 16$

$5^2 = 25$

$6^2 = 36$

So, the missing term is **25**.

Thus, correct option is (c).

Q.3 If $EFGH \rightarrow FGHJ$ and $MNOP \rightarrow NOPR$. Then $STUV \rightarrow ?$

- A. TUVW
- B. UVWX
- C. TUVX
- D. UVWY

Answer: C

Sol: Given: $EFGH \rightarrow FGHJ$ and $MNOP \rightarrow NOPR$.

1	2	3	4	5	6	7	8	9	10	11	12	13
A	B	C	D	E	F	G	H	I	J	K	L	M
Z	Y	X	W	V	U	T	S	R	Q	P	O	N
26	25	24	23	22	21	20	19	18	17	16	15	14

Logic: 1st letter + 1, 2nd letter + 1, 3rd letter + 1 and 4th letter + 2 place.

For, $EFGH \rightarrow FGHJ$

Adda247

Test Prime

ALL EXAMS, ONE SUBSCRIPTION



1,00,000+
Mock Tests



Personalised
Report Card



Unlimited
Re-Attempt



600+
Exam Covered



25,000+ Previous
Year Papers



500%
Refund



ATTEMPT FREE MOCK NOW

$E + 1 = F, F + 1 = G, G + 1 = H, H + 2 = J$
For, MNOP \rightarrow NOPR
 $M + 1 = N, N + 1 = O, O + 1 = P, P + 2 = R$
 Similarly,
 STUV \rightarrow ?
 $S + 1 = T, T + 1 = U, U + 1 = V, V + 2 = X$
 So, STUV \rightarrow **TUVX**
 Thus, correct option is (c).

Q.4 Identify the number that breaks the series:
 3, 7, 13, 21, 29

- A. 7
- B. 13
- C. 21
- D. 29

Answer: D

Sol: Given: 3, 7, 13, 21, 29
Logic: Numbers are increasing even number from 4.
 $3 + 4 = 7$
 $7 + 6 = 13$
 $13 + 8 = 21$
 $21 + 10 \neq 29$
 So, **29** breaks the series.
 Thus, correct option is (d).

Q.5 Two trains of lengths 140 m and 160 m move towards each other at speeds of 45 km/h and 55 km/h respectively. How long will they take to cross each other?

- A. 9.6s
- B. 10.8s
- C. 12.0s
- D. 14.4s

Answer: B

Sol: Given: Two trains of lengths 140 m and 160 m move towards each other at speeds of 45 km/h and 55 km/h respectively.
Solution:
 Lengths of trains: 140 m and 160 m
 Total distance to be covered = $140 + 160 = 300$ m
 Speeds:
 $45 \text{ km/h} = 45 \times \frac{5}{18} = 12.5 \text{ m/s}$
 $55 \text{ km/h} = 55 \times \frac{5}{18} = 15.28 \text{ m/s}$
 Since the trains move towards each other,
 Relative speed = $12.5 + 15.28 = 27.78 \text{ m/s}$
 Time taken:
 $\text{Time} = \frac{300}{27.78} = 10.8 \text{ seconds}$
 So, **10.8s** long will they take to cross each other.
 Thus, correct option is (b).

Q.6 Find the missing number:
 7, 14, 28, 56, ?

- A. 84
- B. 98
- C. 112
- D. 126

Answer: C

Sol: Given: 7, 14, 28, 56, ?

Logic: Numbers are multiply by 2.

$$7 \times 2 = 14$$

$$14 \times 2 = 28$$

$$28 \times 2 = 56$$

$$56 \times 2 = 112$$

So, the missing term is **112**.

Thus, correct option is (c).

Q.7 49 : 343 :: 64 : ?

- A. 256
- B. 384
- C. 512
- D. 448

Answer: C

Sol: Given: 49 : 343 :: 64 : ?

Logic: Square → cube of the same number

$$49 = 7^2 \text{ and } 343 = 7^3$$

Similarly,

$$64 : ?$$

$$64 = 8^2$$

$$? = 8^3 = \mathbf{512}$$

Thus, correct option is (c).

Q.8 If a colleague consistently misses deadlines, what is the best action?

- A. Ignore the issue
- B. Report immediately
- C. Discuss and understand the reason
- D. Stop cooperating

Answer: C

Sol: Given: If a colleague consistently misses deadlines.

Explanation:

The best course of action is to discuss the issue with the colleague and understand the reason.

So, **Discuss and understand the reason** is the best action.

Thus, correct option is (c).

Q.9 Find the odd one.

- A. Mexico : Peso
- B. China : Yuan
- C. Turkey : Lira
- D. Nepal : Dollar

Answer: D

Sol: Let's check each pair:

Option (a): Mexico : Peso

Option (b): China : Yuan

Option (c): Turkey : Lira

Option (d): Nepal : Dollar

Nepal's currency is the Nepalese Rupee, not Dollar.

So, **Nepal : Dollar** is the odd one.

Thus, correct option is (d).

Q.10 How many meaningful words can be formed from the letters of the word "RATE" using each letter once?

- A. One
- B. Two
- C. Three
- D. More than three

Answer: C

Sol: Given: RATE

Let's check all meaningful words that can be formed using R, A, T, E (each letter only once):

RATE

TEAR

TARE

Other arrangements (like EART, ARET) are not meaningful English words.

Total meaningful words = 3

So, **three** meaningful words can be formed from the letters of the word.

Thus, correct option is (c).

Q.11 Statements:

- 1. Some laptops are expensive.
- 2. All expensive items are insured.

Conclusions:

- I. Some laptops are insured.
- II. All laptops are insured.

- A. Only I follows
- B. Only II follows
- C. Both follow
- D. Neither follows

Answer: A

Sol: Statements:

- 1. Some laptops are expensive.
- 2. All expensive items are insured.

From the given statements possible Venn diagram will be.



Conclusions:

- I. Some laptops are insured. (**True**, some laptops are expensive and all expensive items are insured, so that means some laptops are insured).
- II. All laptops are insured. (**False**, some laptops are expensive and all expensive items are insured, so that means all laptops are not insured).

So, **Only I follows.**

Thus, correct option is (a).

Q.12 If MONK is coded as 57, then how is LION coded?

- A. 52
- B. 54
- C. 56
- D. 58

Answer: B

Sol: Given: If MONK is coded as 57.

1	2	3	4	5	6	7	8	9	10	11	12	13
A	B	C	D	E	F	G	H	I	J	K	L	M
Z	Y	X	W	V	U	T	S	R	Q	P	O	N
26	25	24	23	22	21	20	19	18	17	16	15	14

Logic: Sum of place value of letters + numbers of letters = Number

For, MONK - 57

$$13 + 15 + 14 + 11 = 53, 53 + 4 = 57$$

Similarly,

LION - ?

$$12 + 9 + 15 + 14 = 50, 50 + 4 = 54$$

So, LION is coded as **54**.
Thus, correct option is (b).

Q.13 Statement: "Remote work improves employee productivity if supported by proper digital tools."
Which strengthens the statement?

- A. Employees prefer flexible hours
- B. Digital tools reduce coordination gaps
- C. Offices are costly to maintain
- D. Employees work longer hours

Answer: B

Sol: Statement: "Remote work improves employee productivity if supported by proper digital tools."

The option that directly supports this condition will strengthen the statement.

Option (a): Employees prefer flexible hours — related, but does not address productivity through tools

Option (b): Digital tools reduce coordination gaps — directly explains how digital tools improve productivity

Option (c): Offices are costly to maintain — unrelated to productivity

Option (d): Employees work longer hours — longer hours \neq higher productivity

So, **Digital tools reduce coordination gaps** is strengthens the statement.

Thus, correct option is (b).

Q.14 If \div means \times , $+$ means $-$, $-$ means \div and \times means $+$. Find the value of: $48 \div 4 + 6 - 3 \times 5$?

- A. 195
- B. 191
- C. 193
- D. 196

Answer: A

Sol: Given: $48 \div 4 + 6 - 3 \times 5$

Given Sign $\div + - \times$

New Sign $\times - \div +$

Using **BODMAS** rule.

Operation preference wise	Symbol
Brackets	$[], , ()$
Orders, of	$(power), \sqrt{(root), of}$
Division	\div
Multiplication	\times
Addition	$+$
Subtraction	$-$

New equation: $48 \times 4 - 6 \div 3 + 5 = ?$

$48 \times 4 - 2 + 5 = ?$

$192 - 2 + 5 = ?$

$197 - 2 = ?$

$? = 195$

Thus, correct option is (a).

Q.15 Four combinations are given. Two are exactly identical. Identify them.

1. Patel Road, Near City Mall, Surat - 395003
2. Patel Rd, Near City Mall, Surat - 395003
3. Patel Road, Near City Mall, Surat - 395003
4. Patel Road, City Mall, Surat - 395030

- A. 1 and 2
- B. 1 and 3
- C. 2 and 4
- D. 3 and 4

Answer: B

Sol: Given addresses:

1. Patel Road, Near City Mall, Surat - 395003
2. Patel Rd, Near City Mall, Surat - 395003
3. Patel Road, Near City Mall, Surat - 395003
4. Patel Road, City Mall, Surat - 395030

Now, we check each options.

Option (a): (1 and 2)

Not identical because "Road" \neq "Rd" (abbreviation is not allowed in exact matching).

Option (b): (1 and 3)

Completely identical in spelling, words, order, and pin code.

Option (c): (2 and 4)

Different in Road/Rd, "Near" missing, and pin code is different.

Option (d): (3 and 4)

Different in "Near" and pin code (395003 \neq 395030).

So, **1 and 3** are exactly identical.

Thus, correct option is (b).

Q.16 In a locality-sensitive hashing system, similarity threshold is 0.6 and hash family has 25 functions. How many hash functions should be selected?

- A. 10
- B. 12
- C. 15
- D. 18

Answer: C

Sol: Given:

Similarity threshold = 0.6

Total hash functions = 25

In such questions, the number of hash functions selected is taken as:

Selected hash functions = $0.6 \times 25 = 15$

So, **15** hash functions should be selected.

Thus, correct option is (c).

Q.17 You receive confidential information by mistake. What should you do?

- A. Share with colleagues
- B. Ignore it
- C. Inform the concerned authority
- D. Use it for advantage

Answer: C

Sol: Given: You receive confidential information by mistake.

Explanation:

You should **inform the concerned authority** immediately.

Thus, correct option is (c).

Q.18 Choose the pair that is different from the others.

- A. 16 - 256
- B. 18 - 324
- C. 14 - 196
- D. 15 - 210

Answer: D

Sol: Logic: 1st number \times 1st number = 2nd number

Now, we check each options.

Option (a): 16 - 256

$16 \times 16 = 256$

Option (b): $18 - 324$

$18 \times 18 = 324$

Option (c): $14 - 196$

$14 \times 14 = 196$

Option (d): $15 - 210$

$15 \times 15 = 225 \neq 210$

Thus, correct option is (d).

Q.19 Solar System : Sun :: Atom : ?

- A. Electron
- B. Proton
- C. Neutron
- D. Nucleus

Answer: D

Sol: Given: Solar System : Sun :: Atom : ?

The **Sun** is the central body of the **solar system** around which planets revolve.

Similarly,

Atom : ?

The **nucleus** is the central part of an **atom** around which electrons revolve.

Thus, correct option is (d).

Q.20 Find the next letter:

B, E, I, N, ?

- A. S
- B. T
- C. U
- D. R

Answer: B

Sol: Given: B, E, I, N, ?

1	2	3	4	5	6	7	8	9	10	11	12	13
A	B	C	D	E	F	G	H	I	J	K	L	M
Z	Y	X	W	V	U	T	S	R	Q	P	O	N
26	25	24	23	22	21	20	19	18	17	16	15	14

Logic: Letters are increasing natural number from 3.

$B + 3 = E$

$E + 4 = I$

$I + 5 = N$

$N + 6 = T$

So, the missing term is **T**.

Thus, correct option is (b).

Q.21 Arrange the following in meaningful order:

1. Education
2. Job
3. Interview
4. Application

- A. 1-4-3-2
- B. 4-3-1-2
- C. 1-3-4-2
- D. 4-1-3-2

Answer: A

Sol: Given: 1. Education 2. Job 3. Interview 4. Application

A person first completes education.

After that, they apply for a job.
Then they are called for an interview.
Finally, they get the job.
So, the correct sequence is: Education → Application → Interview → Job = **1-4-3-2**
Thus, correct option is (a).

Q.22 Statements:

- I. All metro trains run on electricity.
 - II. The Blue Line is a metro train.
- Which of the following conclusions logically follows from the given statements?

- A. Blue Line runs on electricity
- B. Blue Line is diesel-based
- C. All trains are electric
- D. No conclusion follows

Answer: A

Sol: Statements:

I. All metro trains run on electricity.
II. The Blue Line is a metro train.
Since the Blue Line belongs to the category of metro trains, it must follow the property of that category.
So, **Blue Line runs on electricity.**
Thus, correct option is (a).

Q.23 Pointing to a woman, Rohan said, "She is the daughter of my father's only daughter." How is the woman related to Rohan?

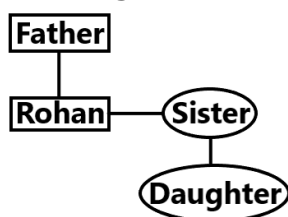
- A. Sister
- B. Daughter
- C. Niece
- D. Cousin

Answer: C

Sol: Given: Pointing to a woman, Rohan said, "She is the daughter of my father's only daughter."

Symbol in Diagram	Meaning
- / 0	Female
+ / □	Male
=	Married Couple
—	Siblings
	Difference Of Generation

From the given information blood relation diagram will be.



So, the woman is **niece** of Rohan.
Thus, correct option is (c).

Q.24 Statement:

"The number of road accidents increased due to overspeeding."

Conclusions:

- I. Speed limits should be enforced.
- II. Roads are poorly constructed.

- A. Only I follows
- B. Only II follows
- C. Both follow
- D. Neither follows

Answer: A

Sol: Statement:

"The number of road accidents increased due to overspeeding."

Conclusions:

I. Speed limits should be enforced.

This logically **follows**, because overspeeding causes accidents, and enforcing speed limits can help reduce them.

II. Roads are poorly constructed.

This is **not** mentioned or implied in the statement.

So, **Only I follows**.

Thus, correct option is (a).

Q.25 A company plans to expand operations but has limited capital. What should it do?

- A. Expand immediately
- B. Take maximum loans
- C. Analyse risk, cost, and demand
- D. Delay expansion indefinitely

Answer: C

Sol: Given: A company plans to expand operations but has limited capital.

Explanation:

The most appropriate action is to **analyse the risk, cost** and market **demand** before making a decision.

Thus, correct option is (c).

Q.26 Which of the following is NOT included among the major industrial regions of India?

1. Mumbai–Pune region
 2. Chotanagpur region
 3. Malabar Coast region
 4. Ahmedabad–Vadodara region
 5. Delhi–Meerut region
- A. 3 only
 - B. 1 and 3 only
 - C. 2 only
 - D. 4 and 5 only

Answer: A

Sol: The correct answer is **(A) 3 only**

Explanation:

- According to the classification of industrial regions in India, there are 8 major industrial regions. The 'Malabar Coast' is categorized as a 'minor' industrial region, not a 'major' one.
- Major regions include Mumbai-Pune, Hugli, Bengaluru-Tamil Nadu, Gujarat (Ahmedabad-Vadodara), Chotanagpur, Vishakhapatnam-Guntur, Gurgaon-Delhi-Meerut, and Kollam-Thiruvananthapuram.

Information Booster:

- Industrial regions are identified based on the number of industrial workers, quantum of power used, and value of industrial output.

Additional Knowledge:

- Chotanagpur (Item 2): Known as the 'Ruhr of India' due to its heavy concentration of iron and steel industries.

Q.27 Identify the INCORRECT statement related to the process of Gram staining.

- A. Crystal violet is the primary stain used in Gram staining
- B. Alcohol acts as a decolourising agent
- C. Gram-positive bacteria appear pink after staining
- D. Iodine acts as a mordant in the staining process

Answer: C

Sol: The correct answer is **(C) Gram-positive bacteria appear pink after staining**

Explanation:

- Statement C is incorrect because Gram-positive bacteria appear purple or blue after staining, as they retain the primary stain (Crystal Violet).
- It is the Gram-negative bacteria that appear pink/red after being counterstained with Safranin.

Information Booster:

- This technique was developed by Hans Christian Gram in 1884.
- The difference in staining is due to the thickness of the peptidoglycan layer in the bacterial cell wall.

Additional Knowledge:

- Crystal Violet (Option A): The first dye applied.
- Alcohol/Acetone (Option B): Removes the dye from Gram-negative cells.
- Iodine (Option D): Forms a complex with crystal violet to trap it in the cell wall.

Q.28 Which of the following Five-Year Plans in India primarily focused on rapid industrialisation with special emphasis on heavy industries?

- A. First Five-Year Plan
- B. Second Five-Year Plan
- C. Sixth Five-Year Plan
- D. Eighth Five-Year Plan

Answer: B

Sol: The correct answer is **(B) Second Five-Year Plan**

Explanation:

- The Second Five-Year Plan (1956–1961) was based on the Mahalanobis Model.
- It prioritized the development of the public sector and rapid industrialisation, specifically focusing on heavy and basic industries like steel and chemicals.

Information Booster:

- Major steel plants at Bhilai, Durgapur, and Rourkela were established during this plan.
- The Industrial Policy Resolution of 1956 was also adopted during this period.

Additional Knowledge:

- First Five-Year Plan (Option A): Focused on the agricultural sector and irrigation.
- Sixth Five-Year Plan (Option C): Marked the beginning of economic liberalization and focus on poverty eradication (Garibi Hatao).
- Eighth Five-Year Plan (Option D): Focused on human resource development and modernization of industries post-1991 reforms.

Q.29 Which of the following is classified as a newly introduced offence under the Bharatiya Nyaya Sanhita, 2023?

- A. Dowry harassment
- B. Criminal conspiracy
- C. Organised crime
- D. Defamation

Answer: C

Sol: The correct answer is **(C) Organised crime**

Explanation:

- The Bharatiya Nyaya Sanhita (BNS), which replaced the IPC, has specifically defined and codified 'Organised Crime' (Section 111) and 'Terrorist Act' (Section 113) for the first time in general penal law.
- Previously, such crimes were largely dealt with under special laws like MCOCA or UAPA.

Information Booster:

- BNS 2023 replaced the Indian Penal Code of 1860.
- It also introduced 'Mob Lynching' and 'Petty Organised Crime' as specific offences.

Additional Knowledge:

- Defamation (Option D): Existed in IPC (Section 499) and is retained in BNS (Section 356), though with the addition of community service as a punishment.
- Dowry Harassment (Option A): Existed under IPC 498A and is retained in BNS (Section 85).

Q.30 Which traditional folk dance of Gujarat is performed using sticks during the festival of Navratri?

- A. Garba
- B. Dandiya Raas
- C. Yakshagana
- D. Chhau

Answer: B

Sol: The correct answer is **(B) Dandiya Raas**

Explanation:

- Dandiya Raas is a energetic folk dance of Gujarat performed with decorated wooden sticks (Dandiyas).
- It represents a mock-fight between Goddess Durga and Mahishasura.

Information Booster:

- Garba is also a Gujarat folk dance, but it is typically performed in circles with hand movements/clapping around a lamp, not necessarily with sticks.

Additional Knowledge:

- Yakshagana (Option C): A traditional theatre/dance form from Karnataka.
- Chhau (Option D): A semi-classical Indian dance with martial, tribal, and folk origins, found in Odisha, West Bengal, and Jharkhand.

Q.31 Which gas is mainly responsible for the depletion of the ozone layer?

- A. Carbon dioxide
- B. Methane
- C. Chlorofluorocarbons
- D. Nitrogen

Answer: C

Sol: The correct answer is **(C) Chlorofluorocarbons**

Explanation:

- Chlorofluorocarbons (CFCs) are synthetic compounds containing chlorine, fluorine, and carbon.
- When they reach the stratosphere, UV radiation breaks them down, releasing chlorine atoms that react with and destroy ozone (O_3) molecules.

Information Booster:

- The Montreal Protocol (1987) is an international treaty designed to protect the ozone layer by phasing out the production of substances like CFCs.
- The 'Ozone Hole' is most prominent over Antarctica.

Additional Knowledge:

- Carbon dioxide (Option A): Primarily responsible for global warming (greenhouse effect), not direct ozone depletion.
- Methane (Option B): A potent greenhouse gas.
- Nitrogen (Option D): Makes up 78% of the atmosphere and is generally inert in the context of ozone depletion.

Q.32 Which of the following statements related to Kho-Kho game rules is correct?

- A. An active chaser can change direction only after touching the pole
- B. A runner is declared out only when touched with both hands
- C. All players of the chasing team remain standing during the attack
- D. A kho can be given without verbal communication

Answer: A

Sol: The correct answer is **(A) An active chaser can change direction only after touching the pole**

Explanation:

- In Kho-Kho, once a chaser starts running in a particular direction (towards a pole), they cannot change that direction until they reach the pole (this is known as 'changing direction').
- They must continue in the direction of their first step after receiving a 'Kho' or starting the chase.

Information Booster:

- A Kho-Kho match consists of two innings. Each inning consists of chasing and running turns of 9 minutes each.
- There are 12 players in a team, but only 9 take the field.

Additional Knowledge:

- Option B: A runner is out if touched by an active chaser with even one hand.
- Option C: Chasers (except the active one) must sit in the squares provided, facing opposite directions alternately.
- Option D: A 'Kho' must be given by touching the sitting chaser and saying the word 'Kho' loudly.

Q.33 Which of the following initiatives is associated with India–Sri Lanka maritime cooperation and focuses on enhancing coastal surveillance?

- A. Indo–Sri Lanka Naval Exercise SLINEX
- B. Maritime Security Dialogue Framework
- C. Coastal Surveillance Radar System Project
- D. Indo-Pacific Maritime Agreement

Answer: C

Sol: The correct answer is **(C) Coastal Surveillance Radar System Project**

Explanation:

- India has helped Sri Lanka set up a network of Coastal Surveillance Radars to enhance maritime domain awareness and security in the Indian Ocean region.
- This is part of India's 'SAGAR' (Security and Growth for All in the Region) policy.

Information Booster:

- India also provided a Dornier maritime surveillance aircraft to the Sri Lankan Air Force to strengthen their capability.

Additional Knowledge:

- SLINEX (Option A): An annual bilateral naval exercise between the Indian Navy and the Sri Lanka Navy.
- Option D: A generic term, not a specific bilateral surveillance project.

Q.34 Which of the following statements best describes the book '*The Elephant Whisperers*' by Bomman and Bellie?

- A. A scientific study on elephant behaviour
- B. A wildlife conservation memoir set in South India
- C. A fictional story based on tribal folklore
- D. An academic work on forest ecology

Answer: B

Sol: The correct answer is **(B) A wildlife conservation memoir set in South India**

Explanation:

- Bomman and Bellie are the real-life protagonists of the Oscar-winning documentary 'The Elephant Whisperers'.
- Subsequent books or memoirs written by or about them focus on their experiences as indigenous caretakers of orphaned elephants in the Mudumalai Tiger Reserve, Tamil Nadu.

Information Booster:

- 'The Elephant Whisperers' won the Academy Award for Best Documentary Short Subject in 2023.
- The story highlights the deep bond between humans and animals in the Kattunayakan tribal community.

Additional Knowledge:

- Mudumalai is located at the tri-junction of Tamil Nadu, Karnataka, and Kerala.

Q.35 Read the following statements marked as Assertion (A) and Reason (R). Choose the correct option:

Assertion (A): The paintings found in Ajanta caves are significant examples of Buddhist art in ancient India.

Reason (R): These paintings mainly depict scenes from the Jataka tales and the life of Buddha.

- A. Both A and R are true, and R is the correct explanation of A
- B. Both A and R are true, but R is not the correct explanation of A
- C. A is true, but R is false
- D. Both A and R are false

Answer: A

Sol: The correct answer is **(A) Both A and R are true, and R is the correct explanation of A**

Explanation:

- Ajanta Caves (Maharashtra) consist of 29 rock-cut cave monuments which are masterpieces of Buddhist religious art.
- The Reason (R) is correct because the murals and frescoes in these caves predominantly illustrate the various lives of the Buddha (Jataka tales) and his biographical events, which is what makes them Buddhist art.

Information Booster:

- Ajanta was designated a UNESCO World Heritage site in 1983.
- The paintings use the 'fresco-secco' technique.

Additional Knowledge:

- Unlike Ajanta (purely Buddhist), the nearby Ellora caves contain Hindu, Buddhist, and Jain monuments.

Q.36 Who among the following was awarded the Padma Shri in 2025 for outstanding contribution to Indian sports?

- Neeraj Chopra
- Mithali Raj
- Sunil Chhetri
- Abhinav Bindra

Answer: C

Sol: The correct answer is **(C) Sunil Chhetri**

Explanation:

- Based on the 2025 Padma Awards list, Sunil Chhetri (Indian football captain) was recognized for his immense contribution to football and Indian sports.
- Note: Neeraj Chopra and Mithali Raj received their Padma awards in previous years (2022).

Information Booster:

- Padma Shri is the fourth-highest civilian award in India.
- Sunil Chhetri is currently one of the highest active international goal-scorers in the world.

Additional Knowledge:

- Neeraj Chopra (Option A): Awarded Padma Shri and PVSM in 2022.
- Abhinav Bindra (Option D): Awarded Padma Bhushan in 2009.

Q.37 Which of the following statements regarding the India–Nepal Joint Commission meeting held in 2025 is/are correct?

- The meeting focused on trade facilitation and border infrastructure development.
- Cooperation in energy, including hydropower projects, was discussed.
- India announced the suspension of all bilateral aid to Nepal.

- 1 and 2 only
- 2 and 3 only
- 1 and 3 only
- 1, 2 and 3

Answer: A

Sol: The correct answer is **(A) 1 and 2 only**

Explanation:

- Statements 1 and 2 are correct as the Joint Commission is the highest bilateral mechanism between the two nations to review the entire gamut of partnership including trade, transit, and energy (hydropower).
- Statement 3 is incorrect: India remains Nepal's largest development partner and continues to provide substantial bilateral aid for various infrastructure and social projects.

Information Booster:

- The Pancheshwar Multipurpose Project is a key hydropower discussion point between the two countries.

Additional Knowledge:

- India and Nepal share an open border under the 1950 Treaty of Peace and Friendship.

Q.38 Consider the following statements regarding badminton court measurements:

1. The full length of a badminton court is 13.40 metres.
2. The width of the court is the same for singles and doubles matches.
3. The net height at the centre of the court is 1.55 metres.

Which of the statements given above is/are correct?

- A. Only 1 is correct
- B. Only 1 and 2 are correct
- C. Only 1 and 3 are correct
- D. 1, 2 and 3 are correct

Answer: A

Sol: The correct answer is **(A) Only 1 is correct**

Explanation:

- Statement 1: Correct. The total length of the court is 13.40 metres (44 feet) for both singles and doubles.
- Statement 2: Incorrect. The width for doubles is 6.10 metres (20 feet), while for singles it is 5.18 metres (17 feet).
- Statement 3: Incorrect. The net height is 1.55 metres at the edges (posts) but 1.524 metres (5 feet) at the centre.

Information Booster:

- The Badminton World Federation (BWF) sets these standard measurements.

Additional Knowledge:

- The short service line is 1.98 metres from the net.

Q.39 In which of the following situations does a liquidity trap generally occur?

- A. When interest rates are very low and people prefer holding cash
- B. When interest rates are very high and savings increase
- C. When money supply is reduced by the central bank
- D. When investment demand is perfectly inelastic

Answer: A

Sol: The correct answer is **(A) When interest rates are very low and people prefer holding cash**

Explanation:

- A liquidity trap is an economic situation where monetary policy becomes ineffective because interest rates are so low that consumers prefer to hoard cash rather than invest or spend.
- In this state, further injections of cash into the banking system by the central bank fail to lower interest rates or stimulate economic growth.

Information Booster:

- This concept was originally proposed by John Maynard Keynes.
- In a liquidity trap, the demand for money becomes perfectly elastic with respect to the interest rate.

Additional Knowledge:

- Option B: High interest rates usually encourage savings and are part of a contractionary phase, not a trap.
- Option D: Inelastic investment demand is a separate issue relating to how firms respond to interest rate changes, though it often accompanies a liquidity trap.

Q.40 The Doppler effect refers to the change in observed frequency of a wave due to relative motion between the source and the observer. Which of the following situations shows the Doppler effect for sound?

- A. Sound reflecting from a distant mountain
- B. A listener notices a change in pitch as a police car moves past
- C. Sound travelling faster in warm air
- D. Loudness of sound decreases with distance

Answer: B

Sol: The correct answer is **(B) A listener notices a change in pitch as a police car moves past**

Explanation:

- The Doppler effect causes the received frequency (pitch) of a sound to be higher as the source approaches and lower as it moves away.
- When a police siren approaches, the sound waves are 'compressed,' and as it recedes, they are 'stretched.'

Information Booster:

- The effect was proposed by Christian Doppler in 1842.
- It applies to all types of waves, including light (Redshift/Blueshift).

Additional Knowledge:

- Option A: This refers to an 'Echo' (reflection of sound).
- Option C: This refers to the effect of temperature on the speed of sound.
- Option D: This is due to the 'Inverse Square Law' and attenuation of energy.

Q.41 Which government scheme is specifically designed to support meritorious students from economically weaker sections in pursuing higher education?

- A. National Scholarship Portal Scheme
- B. Central Sector Scheme of Scholarship for College and University Students
- C. Samagra Shiksha Abhiyan
- D. Mid-Day Meal Scheme

Answer: B

Sol: The correct answer is **(B) Central Sector Scheme of Scholarship for College and University Students**

Explanation:

- This scheme aims to provide financial assistance to meritorious students from poor families to meet a part of their day-to-day expenses while pursuing higher studies.
- It is managed by the Department of Higher Education and targets students who are above the 80th percentile of successful candidates in the relevant stream from the respective Board of Examination.

Information Booster:

- The scholarship is distributed through the Direct Benefit Transfer (DBT) mode.

Additional Knowledge:

- National Scholarship Portal (Option A): It is a digital platform, not a single scheme, that hosts multiple scholarships.
- Samagra Shiksha Abhiyan (Option C): An overarching program for the school education sector extending from pre-school to class 12.
- Mid-Day Meal Scheme (Option D): A school meal program designed to better the nutritional standing of school-age children nationwide.

Q.42 Which of the following Fundamental Rights is available only to citizens of India?

- A. Right to Equality
- B. Right to Freedom of Religion
- C. Right against Exploitation
- D. Right to Constitutional Remedies

Answer: A

Sol: The correct answer is **(A) Right to Equality**

Explanation:

- While some rights under 'Right to Equality' (like Article 14) apply to everyone, specific components like Article 15 (prohibition of discrimination on grounds only of religion, race, caste, sex or place of birth) and Article 16 (equality of opportunity in public employment) are available only to citizens.
- Based on standard GS classifications for competitive exams, Article 15, 16, 19, 29, and 30 are exclusive to Indian citizens.

Information Booster:

- Fundamental Rights available only to citizens: Articles 15, 16, 19, 29, and 30.
- Rights available to both citizens and foreigners (except enemy aliens): Articles 14, 20, 21, 21A, 22, 23, 24, 25, 26, 27, and 28.

Additional Knowledge:

- Freedom of Religion (Option B): Available to all persons (Articles 25-28).
- Right against Exploitation (Option C): Available to all persons (Articles 23-24).

Q.43 According to the World Air Quality Report 2024 released in 2025, which capital city was ranked as the most polluted in the world?

- A. Dhaka
- B. Beijing
- C. New Delhi
- D. Lahore

Answer: C

Sol: The correct answer is **(C) New Delhi**

Explanation:

- As per the World Air Quality Report (based on 2024 data), New Delhi consistently ranks as the most polluted capital city globally due to high PM2.5 levels.
- Factors like stubble burning, vehicular emissions, and industrial output contribute to this ranking.

Information Booster:

- The report is typically published by IQAir, a Swiss air quality technology company.
- PM2.5 refers to particulate matter with a diameter of less than 2.5 micrometres.

Additional Knowledge:

- Dhaka (Option A): Often ranks among the top 5 most polluted capitals.
- Lahore (Option D): Frequently tops the list for the most polluted *city* overall, though it is not a national capital.

Q.44 In the event of a clash between a Central law and a State law on a subject in the Concurrent List, the State law will prevail only when:

- A. It is approved by a special majority of the State Legislature
- B. It has obtained the assent of the President of India
- C. It is upheld by the Supreme Court
- D. It is passed unanimously by Parliament

Answer: B

Sol: The correct answer is **(B) It has obtained the assent of the President of India**

Explanation:

- Under Article 254(2) of the Indian Constitution, if a State law on a Concurrent List subject is inconsistent with an existing Central law, the State law can prevail in that State if it was reserved for the President's consideration and received his/her assent.
- However, Parliament can still override such a law by passing a new law on the same matter.

Information Booster:

- The Concurrent List (List III) contains 52 items (originally 47) over which both the Centre and States have jurisdiction.

Additional Knowledge:

- In normal circumstances (Article 254-1), the Central law prevails over the State law in case of a conflict.

Q.45 Regarding India's climate and monsoon system:

1. The Southwest Monsoon brings rainfall mainly during June to September.
2. The Northeast Monsoon primarily affects the Coromandel Coast.

Which of the above is/are correct?

- A. Statement 1 only
- B. Statement 2 only
- C. Both 1 and 2
- D. Neither 1 nor 2

Answer: C

Sol: The correct answer is **(C) Both 1 and 2**

Explanation:

- Statement 1: The Southwest Monsoon is the primary rain-bearing season for most of India, occurring between June and September.
- Statement 2: The Northeast Monsoon (or retreating monsoon) picks up moisture from the Bay of Bengal and provides significant rainfall to Tamil Nadu and the Coromandel Coast during October to December.

Information Booster:

- India has a 'Tropical Monsoon' type of climate.
- The Western Ghats receive heavy rainfall from the Arabian Sea branch of the Southwest Monsoon.

Additional Knowledge:

- The onset of the monsoon usually starts in Kerala around June 1st.

Q.46 Read the statements given below carefully:

Statement 1: The Deccan Plateau is largely composed of basaltic lava flows, giving rise to black soil.

Statement 2: The Western Ghats are young fold mountains formed during the Himalayan orogeny.

Which of the above statements is/are correct?

- A. Only 1
- B. Only 2
- C. Both 1 and 2
- D. Neither 1 nor 2

Answer: A

Sol: The correct answer is **(A) Only 1**

Explanation:

- Statement 1 is correct: The Deccan Traps were formed by volcanic activity, creating thick layers of basalt. Over time, the weathering of this rock produced 'Regur' or Black Soil, which is ideal for cotton cultivation.
- Statement 2 is incorrect: The Western Ghats are not fold mountains; they are the faulted and eroded edge of the Deccan Plateau (Block Mountains). They are much older than the Himalayas.

Information Booster:

- The Himalayas are the primary example of Young Fold Mountains in India.
- The Western Ghats are a UNESCO World Heritage site and a global biodiversity hotspot.

Additional Knowledge:

- Anai Mudi is the highest peak of the Western Ghats and South India.

Q.47 Read the following statements:

1. After the decline of the Gupta Empire, several regional kingdoms emerged in northern India.

2. These regional kingdoms maintained political unity, which strengthened central authority.

Which of the statements given above is/are correct?

- A. Only 1
- B. Only 2
- C. Both 1 and 2
- D. Neither 1 nor 2 is correct

Answer: A

Sol: The correct answer is **(A) Only 1**

Explanation:

- Statement 1 is correct: After the Gupta Empire fell in the mid-6th century, North India fragmented into several regional powers like the Pushyabhutis of Thanesar, the Maukharis of Kannauj, and the Maitrakas of Vallabhi.
- Statement 2 is incorrect: The emergence of these regional kingdoms led to political fragmentation and constant conflict for supremacy (like the Tripartite Struggle), rather than maintaining unity or strengthening central authority.

Information Booster:

- Harshavardhana (Pushyabhuti dynasty) later tried to unify North India in the 7th century.

Additional Knowledge:

- The Huna invasions were a major factor in the final decline of the Gupta central authority.

Q.48 Match the Chandrayaan-3 mission components with their respective functions: Which of the following matchings is correct?

Components: Functions:

- | | |
|----------------------|-------------------------------------|
| 1. Propulsion Module | A. Soft landing on lunar surface |
| 2. Lander Module | B. Orbit maintenance and transfer |
| 3. Rover (Pragyan) | C. Surface mobility and experiments |
| 4. Payloads | D. Scientific observations |

- A. 1-B, 2-A, 3-C, 4-D
- B. 1-A, 2-B, 3-D, 4-C
- C. 1-C, 2-A, 3-B, 4-D
- D. 1-B, 2-C, 3-A, 4-D

Answer: A

Sol: The correct answer is **(A) 1-B, 2-A, 3-C, 4-D**

Explanation:

- 1-B: The Propulsion Module carried the lander/rover to a 100km lunar orbit and acted as a communication relay/orbital platform.
- 2-A: The Lander (Vikram) was responsible for the soft landing on the Moon.
- 3-C: The Rover (Pragyan) was the six-wheeled vehicle that moved on the surface to conduct in-situ chemical analysis.
- 4-D: Payloads are the scientific instruments (like RAMBHA, ChaSTE) that record data and observations.

Information Booster:

- India became the first country to land near the Lunar South Pole on August 23, 2023.
- The landing site was named 'Shiv Shakti Point'.

Additional Knowledge:

- LVM3 M4 was the launch vehicle for this mission.

Q.49 Read the following two statements carefully and choose the correct option:

Statement 1: A large proportion of children in India suffer from malnutrition.

Statement 2: Lack of balanced diet and poor access to healthcare contribute to malnutrition.

- A. Only 1
- B. Only 2
- C. Both 1 and 2 are correct
- D. Neither 1 nor 2 is correct

Answer: C

Sol: The correct answer is **(C) Both 1 and 2 are correct**

Explanation:

- Statement 1: According to NFHS-5 data and Global Hunger Reports, a significant percentage of Indian children suffer from stunting, wasting, and anemia, indicating a high prevalence of malnutrition.
- Statement 2: Malnutrition is a multi-dimensional issue caused by inadequate intake of macronutrients/micronutrients and frequent infections due to poor healthcare and sanitation.

Information Booster:

- POSHAN Abhiyaan (National Nutrition Mission) is the flagship program of the Government of India to improve nutritional outcomes.
- Stunting refers to low height-for-age, while wasting refers to low weight-for-height.

Additional Knowledge:

- The Mid-Day Meal Scheme (now PM POSHAN) aims to address classroom hunger and improve nutritional levels.

Q.50 Consider the following statements regarding India's National Hydrogen Mission:

1. It aims to promote the production and use of green hydrogen.
2. The mission focuses on reducing dependence on fossil fuel imports.
3. It is implemented by the Ministry of New and Renewable Energy.

Which of the statements given above is/are correct?

- A. Only 1 and 2 are correct
- B. Only 2 and 3 are correct
- C. Only 1 and 3 are correct
- D. 1, 2 and 3 are correct

Answer: D

Sol: The correct answer is **(D) 1, 2 and 3 are correct**

Explanation:

- Statement 1: The National Green Hydrogen Mission (launched in early 2023) aims to make India a global hub for the production and export of green hydrogen.
- Statement 2: By shifting to hydrogen, India aims to reduce its massive expenditure on importing oil and gas, thereby enhancing energy security.
- Statement 3: The Ministry of New and Renewable Energy (MNRE) is the nodal ministry for its implementation.

Information Booster:

- Green Hydrogen is produced through the electrolysis of water using renewable energy.

- The SIGHT (Strategic Interventions for Green Hydrogen Transition) program is a major sub-component of this mission.

Additional Knowledge:

- India targets to reach net-zero emissions by 2070, and this mission is a key pillar of that goal.

Q.51 What is the sum of all two-digit numbers divisible by both 5 and 7?

- A. 85
- B. 210
- C. 105
- D. 90

Answer: C

Sol: Given:

We need to find the sum of all two-digit numbers divisible by both 5 and 7.

Concept Used:

A number divisible by both a and b is divisible by their LCM.

Solution:

LCM of 5 and 7 is 35.

We look for two-digit multiples of 35.

The multiples are:

$$35 \times 1 = 35$$

$$35 \times 2 = 70$$

$$35 \times 3 = 105 \text{ (This is a three-digit number)}$$

So, the two-digit numbers are 35 and 70.

$$\text{Sum} = 35 + 70 = 105$$

Final Answer

The sum is 105.

Q.52 What is the value of $(0.81 \div 9) \div (1.44 - 0.24)$?

- A. $\frac{1}{12}$
- B. $\frac{40}{3}$
- C. $\frac{1}{15}$
- D. $\frac{2}{25}$

Answer: B

Sol: Given:

$$(0.81 \div 9) \div (1.44 - 0.24)$$

Solution:

$$(0.81 \div 9) \div (1.44 - 0.24)$$

$$= 0.09 \div (1.20)$$

$$= \frac{9}{100} \div \frac{6}{5}$$

$$= \frac{9}{100} \times \frac{5}{6}$$

$$= \frac{45}{600}$$

$$= \frac{3}{40}$$

Q.53 V and W start a business. V invests ₹50,000. After 4 months, W joins with ₹75,000. After 2 more months, V triples his capital. If the business runs for 12 months, find the profit ratio of V to W.

- A. 5:3
- B. 6:5
- C. 7:4
- D. 2:1

Answer: D

Sol: Given:

V's initial investment = 50,000

W's investment = 75,000 (joins after 4 months)

V triples capital after 2 more months (Total 6 months from start).

Total duration = 12 months.

Solution:

V's Capital Structure:

First 6 months: 50,000

Next 6 months: $3 \times 50,000 = 150,000$

Total V-months = $(50,000 \times 6) + (150,000 \times 6)$

= $300,000 + 900,000 = 1,200,000$

W's Capital Structure:

Joined after 4 months, so invested for $12 - 4 = 8$ months.

Total W-months = $75,000 \times 8 = 600,000$

Ratio V : W = $1,200,000 : 600,000$

= $12 : 6 = 2 : 1$

Final Answer

2 : 1

Q.54 The average age of a group of 30 students is 18 years. If a student aged 12 years leaves the group, what will be the new average age?

- A. 17.79
- B. 18.21
- C. 18.45
- D. 19.02

Answer: B

Sol: Given:Number of students (n) = 30

Initial Average = 18

Age of leaving student = 12

Formula Used:Sum = Average \times n **Solution:**Total sum of ages = $30 \times 18 = 540$ New Sum = $540 - 12 = 528$

New number of students = 29

New Average = $\frac{528}{29} \approx 18.2068\dots$

Rounding to two decimal places:

18.21

Final Answer

18.21

Q.55 A 20% drop in the price of rice allows a customer to purchase 3 kg more for ₹360. What is the new price of rice per kg?

- A. ₹22.50
- B. ₹24.00
- C. ₹25.50
- D. ₹27.00

Answer: B**Sol: Given:**

Drop in price = 20%

Expenditure = 360

Extra quantity = 3 kg

Solution:Let original price be P .New price $P' = 0.8P$.Original Quantity $Q = \frac{360}{P}$ New Quantity $Q' = \frac{360}{0.8P} = \frac{450}{P}$ Given $Q' - Q = 3$

$$\frac{450}{P} - \frac{360}{P} = 3$$

$$\frac{90}{P} = 3 \implies P = 30$$

Original Price = 30

New Price = $0.8 \times 30 = 24$

Final Answer

24.00

Q.56 Which of the following is the effective annual rate of interest corresponding to a compound interest rate of 12% per annum compounded quarterly?

- A. 12.36%
- B. 12.55%
- C. 12.68%
- D. 12.82%

Answer: B

Sol: Given:

Nominal Rate $r = 12\%$ p.a.

Frequency $n = 4$ (Quarterly)

Formula Used:

$$\text{Effective Rate} = \left(1 + \frac{r}{n}\right)^n - 1$$

Solution:

$$\text{Rate per quarter} = \frac{12\%}{4} = 3\% = 0.03$$

$$\text{Effective Rate} = (1 + 0.03)^4 - 1$$

$$= (1.03)^4 - 1$$

$$\approx 1.1255088 - 1$$

$$= 0.1255088$$

$$\approx 12.55\%$$

Final Answer

12.55%

Q.57 By selling 7 tables for ₹2,100, a carpenter gains the cost price of 3 tables. The profit percent is:

- A. 42.86%
- B. 45.50%
- C. 50.00%
- D. 52.25%

Answer: A

Sol: Given:

Selling Price (SP) of 7 tables involves a gain equal to Cost Price (CP) of 3 tables.

Concept Used:

$$\text{Gain} = \text{SP} - \text{CP}$$

Solution:

Let CP of 1 table be x .

$$\text{CP of 7 tables} = 7x.$$

$$\text{Gain} = 3x.$$

$$\text{SP of 7 tables} = \text{CP of 7} + \text{Gain} = 7x + 3x = 10x.$$

$$\text{Profit Percent} = \frac{\text{Gain}}{\text{CP}} \times 100$$

$$= \frac{3x}{7x} \times 100$$

$$= \frac{300}{7}\%$$

$$\approx 42.857\ldots\%$$

Final Answer

$$42.86\%$$

Q.58 P and Q together can finish a work in 20 days, Q and R in 28 days, and R and P in 35 days. In how many days can Q alone complete the work?

- A. 35 days
- B. 32.5 days
- C. 35.2 days
- D. 38.9 days

Answer: A

Sol: Given:

$$(P + Q) = 20 \text{ days}$$

$$(Q + R) = 28 \text{ days}$$

$$(R + P) = 35 \text{ days}$$

Solution:

$$\text{Let Total Work} = \text{LCM}(20, 28, 35) = 140 \text{ units.}$$

$$\text{Efficiency of } (P + Q) = \frac{140}{20} = 7$$

$$\text{Efficiency of } (Q + R) = \frac{140}{28} = 5$$

$$\text{Efficiency of } (R + P) = \frac{140}{35} = 4$$

Adding all:

$$2(P + Q + R) = 7 + 5 + 4 = 16$$

$$P + Q + R = 8$$

To find Q's efficiency, subtract (R+P):

$$Q = (P + Q + R) - (R + P) = 8 - 4 = 4 \text{ units/day.}$$

$$\text{Time for Q} = \frac{140}{4} = 35 \text{ days.}$$

Final Answer

$$35 \text{ days}$$

Q.59 Two types of coffee are mixed. The first type costs ₹24 per kg and the second type costs ₹28 per kg. In what ratio should these be mixed so that by selling the mixture at ₹30 per kg, a profit of 15% is gained?

- A. 13:12

- B. 14:13
- C. 15:14
- D. 11:12

Answer: D

Sol: Given:

$$CP_1 = 24, CP_2 = 28$$

$$\text{Selling Price (SP)} = 30$$

$$\text{Profit} = 15\%$$

Solution:

First, find the Cost Price of the mixture (Mean CP).

$$\text{Mean CP} = \frac{SP}{1 + \frac{P\%}{100}} = \frac{30}{1.15} = \frac{3000}{115} = \frac{600}{23} \approx 26.087$$

Using Alligation Rule:

$$\frac{w_1}{w_2} = \frac{CP_2 - \text{Mean}}{\text{Mean} - CP_1}$$

$$\text{Mean} - CP_1 = \frac{600}{23} - 24 = \frac{600 - 552}{23} = \frac{48}{23}$$

$$CP_2 - \text{Mean} = 28 - \frac{600}{23} = \frac{644 - 600}{23} = \frac{44}{23}$$

$$\text{Ratio} = \frac{44/23}{48/23} = \frac{44}{48} = \frac{11}{12}$$

Final Answer

11 : 12

Q.60 A machine fills bottles. In the first minute, it fills 20 bottles, but in the next minute, 6 bottles get rejected. If the machine works in alternate minutes, how many minutes will it take to fill a total of 126 bottles?

- A. 17 minutes
- B. 18 minutes
- C. 19 minutes
- D. 20 minutes

Answer: A

Sol: Given:

Minute 1: +20 bottles

Minute 2: -6 bottles (rejected)

Cycle (2 mins): Net +14 bottles.

Target: 126 bottles.

Solution:

We need to reach close to $126 - 20 = 106$ using full cycles.

$$14 \times 7 = 98 \text{ bottles in 14 minutes.}$$

$$14 \times 8 = 112 \text{ bottles in 16 minutes.}$$

After 16 minutes, bottles = 112.

$$\text{Minute 17 (Fill): } 112 + 20 = 132.$$

The total crosses 126 in the 17th minute.

Final Answer

17 minutes

- Q.61** Given: $\frac{x}{m} + \frac{y}{n} + \frac{z}{p} = 2$ and $\frac{m}{x} + \frac{n}{y} + \frac{p}{z} = 0$, where x, y, z and m, n, p are non-zero, then the value of $\frac{x^2}{m^2} + \frac{y^2}{n^2} + \frac{z^2}{p^2}$ is:
- A. 2
 - B. 3
 - C. 4
 - D. 5

Answer: C

Sol: Given:

$$\text{Let } a = \frac{x}{m}, b = \frac{y}{n}, c = \frac{z}{p}.$$

$$a + b + c = 2$$

$$\frac{1}{a} + \frac{1}{b} + \frac{1}{c} = 0$$

Solution:

$$\frac{1}{a} + \frac{1}{b} + \frac{1}{c} = 0$$

$$\implies \frac{ab + bc + ca}{abc} = 0$$

$$\implies ab + bc + ca = 0.$$

We need $a^2 + b^2 + c^2$.

$$(a + b + c)^2 = a^2 + b^2 + c^2 + 2(ab + bc + ca)$$

$$2^2 = a^2 + b^2 + c^2 + 2(0)$$

$$4 = a^2 + b^2 + c^2$$

Final Answer

4

- Q.62** A bag initially contains 4 green balls and 3 yellow balls. You draw two balls without replacement. If both balls are the same color, you stop. If they are different colors, you put both balls back, add one additional green ball, and draw again. What is the probability that you do not stop on the first draw, but you stop on the second draw?

- A. $\frac{13}{49}$
- B. $\frac{11}{32}$
- C. $\frac{3}{8}$
- D. $\frac{13}{35}$

Answer: A

Sol: Given:

Initial: 4G, 3Y. Total 7.

Solution:

Step 1: Probability of Different Colors (Do not stop).

$$P(\text{Diff}) = P(GY) + P(YG) = \frac{4}{7} \times \frac{3}{6} + \frac{3}{7} \times \frac{4}{6} = \frac{12}{42} + \frac{12}{42} = \frac{24}{42} = \frac{4}{7}$$

Step 2: Update Bag.

Put back (4G, 3Y), add 1G. New: 5G, 3Y. Total 8.

Step 3: Probability of Same Color (Stop).

$$P(\text{Same}) = P(GG) + P(YY)$$

$$P(GG) = \frac{5}{8} \times \frac{4}{7} = \frac{20}{56}$$

$$P(YY) = \frac{3}{8} \times \frac{2}{7} = \frac{6}{56}$$

$$P(\text{Same}) = \frac{26}{56} = \frac{13}{28}$$

Total Probability = $P(\text{Step 1}) \times P(\text{Step 3})$

$$= \frac{4}{7} \times \frac{13}{28} = \frac{1}{7} \times \frac{13}{7} = \frac{13}{49}$$

Final Answer

13/49

Q.63 A helicopter is flying at a steady altitude of 1,200 meters. From a point on the ground, the angle of elevation changes from 45° to 30° in 24 seconds as it flies directly away. What is the approximate speed of the helicopter?

- A. 25.8 m/s
- B. 27.3 m/s
- C. 36.6 m/s
- D. 31.5 m/s

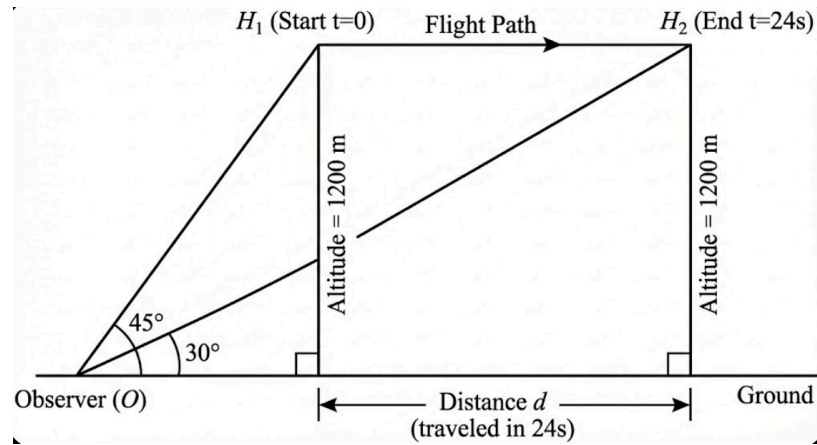
Answer: C

Sol: Given:

Height $h = 1200$ m.

Angles: $45^\circ \rightarrow 30^\circ$. Time = 24 s.

Solution:



$$\text{Distance } d_1 = \frac{h}{\tan 45^\circ} = 1200 \text{ m.}$$

$$\text{Distance } d_2 = \frac{h}{\tan 30^\circ} = 1200\sqrt{3} \approx 2078.46 \text{ m.}$$

$$\text{Distance covered} = d_2 - d_1 = 878.46 \text{ m.}$$

$$\text{Speed} = \frac{878.46}{24} \approx 36.6 \text{ m/s.}$$

Final Answer

36.6 m/s

Q.64 A biologist measured the lengths of a sample of $n=12$ fish: 8.2, 9.5, 10.1, 8.8, 11.3, 9.2, 10.5, 9.8, 8.5, 11.0, 9.5, 10.6. The average length is 9.75 cm. Find the sample standard deviation, rounded to two decimal places.

- A. 0.98 cm
- B. 1.05 cm
- C. 1.12 cm
- D. 1.25 cm

Answer: A

Sol: Given:

Data set of $n = 12$. Mean = 9.75.

Solution:

Calculate sum of squared deviations $\sum(x - \bar{x})^2$.

$$(8.2 - 9.75)^2 + \dots + (10.6 - 9.75)^2$$

Sum ≈ 10.65 .

$$\text{Sample Variance } s^2 = \frac{10.65}{12 - 1} = \frac{10.65}{11} \approx 0.968.$$

$$\text{Sample Std Dev } s = \sqrt{0.968} \approx 0.98.$$

Final Answer

0.98 cm

Q.65 A cube having an edge length L is melted and recast into a cone and a hemisphere. The cone and hemisphere have equal radii. If the height of the cone is equal to twice its radius r , find the ratio $L:r$.

- A. $\sqrt[3]{8} : \sqrt[3]{3}$
- B. $\sqrt[3]{10\pi} : \sqrt[3]{3}$
- C. $\sqrt[3]{4\pi} : \sqrt[3]{3}$
- D. $\sqrt[3]{16} : \sqrt[3]{3}$

Answer: C

Sol: Given:

$$\text{Volume of Cube} = L^3$$

$$\text{Cone: Radius } r, \text{ Height } h = 2r.$$

$$\text{Hemisphere: Radius } r.$$

Solution:

$$\text{Vol Cone} = \frac{1}{3}\pi r^2(2r) = \frac{2}{3}\pi r^3.$$

$$\text{Vol Hemisphere} = \frac{2}{3}\pi r^3.$$

$$\text{Total Vol} = \frac{4}{3}\pi r^3.$$

$$L^3 = \frac{4}{3}\pi r^3.$$

$$\frac{L}{r} = \sqrt[3]{\frac{4\pi}{3}}.$$

$$L : r = \sqrt[3]{4\pi} : \sqrt[3]{3}$$

Q.66 A right prism has a rectangular base with dimensions 8 cm and 12 cm. The height of the prism is 15 cm. Find the total surface area of the prism.

- A. 672 cm²
- B. 720 cm²
- C. 792 cm²
- D. 840 cm²

Answer: C

Sol: Given:

$$\text{Base: } 8 \times 12. \text{ Height: } 15.$$

Solution:

$$\text{Base Area (B)} = 8 \times 12 = 96.$$

$$\text{Perimeter (P)} = 2(8 + 12) = 40.$$

$$\text{Lateral Surface Area} = P \times h = 40 \times 15 = 600.$$

$$\text{Total Surface Area} = LSA + 2B = 600 + 2(96) = 600 + 192 = 792.$$

Final Answer

$$792 \text{ cm}^2$$

Q.67 A rectangular park 25 m × 18m has five full circular fountains of radius 1.5 m placed within it. What is the area left for walking?

- A. 414.73 m²

- B. 420.12 m²
- C. 425.68 m²
- D. 432.89 m²

Answer: A

Sol: Given:

Park: 25×18 .

Fountains: 5 circles, $r = 1.5$.

Solution:

Area of Park = $25 \times 18 = 450$.

Area of 1 Fountain = $\pi(1.5)^2 = 2.25\pi$.

Area of 5 Fountains = $5 \times 2.25\pi = 11.25\pi \approx 35.34$.

Remaining Area = $450 - 35.34 = 414.66$.

Final Answer

414.73 m²

Q.68 Two supplementary angles differ by 48° . What are the angles?

- A. $54^\circ, 126^\circ$
- B. $60^\circ, 120^\circ$
- C. $66^\circ, 114^\circ$
- D. $72^\circ, 108^\circ$

Answer: C

Sol: Given:

$$x + y = 180$$

$$x - y = 48$$

Solution:

$$\text{Add equations: } 2x = 228 \implies x = 114.$$

$$y = 114 - 48 = 66.$$

Final Answer

$66^\circ, 114^\circ$

Q.69 In triangle PQR, if the Euler line is horizontal and passes through (2,5), (6,5), and (10,5), which point is the centroid?

- A. (2,5)
- B. (6,5)
- C. (8,5)
- D. (10,5)

Answer: B

Sol: Given:

Euler line contains points at $x = 2, 6, 10$ (all $y=5$).

Concept:

The Euler line passes through the Orthocenter (H), Centroid (G), and Circumcenter (O).

The Centroid G lies strictly between H and O.

Solution:

Since the points are collinear and ordered 2, 6, 10, the intermediate point must be the Centroid.

Point at $x=6$ is between $x=2$ and $x=10$.

Final Answer

(6, 5)

Q.70 Two lines are perpendicular and intersect at the point (4, 3). If one line has the equation $y=3x$, what is the equation of the other line?

- A. $y = -1/3x + 13/3$
- B. $y = -1/3x + 11/3$
- C. $y = -1/3x + 15/3$
- D. $y = -1/3x + 17/3$

Answer: A

Sol: Given:

Line 1: $y = 3x \implies m_1 = 3$.

Intersection: (4, 3).

Solution:

Slope of perpendicular line $m_2 = -\frac{1}{m_1} = -\frac{1}{3}$.

Equation: $y - 3 = -\frac{1}{3}(x - 4)$.

$$y = -\frac{1}{3}x + \frac{4}{3} + 3$$

$$y = -\frac{1}{3}x + \frac{13}{3}$$

Final Answer

$$y = -1/3x + 13/3$$

Q.71 The data given below shows the temperature (in °C) recorded in a city on 6 different days: 18, 20, 22, 25, 27, 30. Find the sample variance of the given data.

- A. 16.8
- B. 18.5
- C. 20.2
- D. 22.7

Answer: C

Sol: Given:

Data: 18, 20, 22, 25, 27, 30.

Solution:

$$\text{Mean} = \frac{142}{6} \approx 23.67.$$

$$\text{Sum of squared diffs} = (18 - 23.67)^2 + \dots + (30 - 23.67)^2 \approx 101.33.$$

$$\text{Sample Variance } s^2 = \frac{101.33}{6-1} = 20.27.$$

Final Answer

20.2

Q.72 Find the value of: $\sqrt{7+2\sqrt{12}} + \sqrt{7-2\sqrt{12}}$

- A. $2\sqrt{3}$
- B. $\sqrt{14}$
- C. 4
- D. $3\sqrt{2}$

Answer: C

Sol: Given:

$$\sqrt{7+2\sqrt{12}} + \sqrt{7-2\sqrt{12}}$$

Solution:

$$\begin{aligned} & \sqrt{7+2\sqrt{12}} + \sqrt{7-2\sqrt{12}} \\ &= \sqrt{7+4\sqrt{3}} + \sqrt{7-4\sqrt{3}} \\ &= \sqrt{(\sqrt{4} + \sqrt{3})^2} + \sqrt{(\sqrt{4} - \sqrt{3})^2} \\ &= (2 + \sqrt{3}) + (2 - \sqrt{3}) \\ &= 4 \end{aligned}$$

Q.73 The angle between two tangents from an external point to a circle is 60° . What is the angle subtended by the chord of contact at the circumference?

- A. 30°
- B. 60°
- C. 90°
- D. 120°

Answer: B

Sol: Given:

$$\text{Angle between tangents} = 60^\circ.$$

Solution:

The angle subtended by the chord at the center is $180^\circ - 60^\circ = 120^\circ$.

Angle at the circumference (major arc) is half the angle at the center.

$$\text{Angle} = \frac{120}{2} = 60^\circ.$$

Final Answer

60°

Q.74 If $\sin B \cos B = 2/5$ and $B \in (0, \pi/2)$, then what is $\sin 2B$?

- A. $\frac{3}{5}$
- B. $\frac{4}{5}$
- C. $\frac{6}{7}$
- D. $\frac{7}{7}$

Answer: B

Sol: Given:

$$\sin B \cos B = \frac{2}{5}$$

Formula Used:

$$\sin 2B = 2 \sin B \cos B$$

Solution:

$$\sin 2B = 2 \times \frac{2}{5} = \frac{4}{5}$$

Final Answer

$$\frac{4}{5}$$

Q.75 A tangent to a circle has length 12 cm, and the shortest distance from the external point to the circle is 5 cm. What is the radius of the circle?

- A. 11.9 cm
- B. 8 cm
- C. 9.7 cm
- D. 10 cm

Answer: A

Sol: Given:

Tangent (PT) = 12 cm.

Shortest distance (d) = 5 cm.

Solution:

Let radius be r .

Distance from center to point (OP) = $r + d = r + 5$.

In right triangle OPT:

$$OP^2 = PT^2 + r^2$$

$$(r + 5)^2 = 12^2 + r^2$$

$$r^2 + 10r + 25 = 144 + r^2$$

$$10r = 119$$

$$r = 11.9 \text{ cm.}$$

Final Answer

11.9 cm

Q.76 Select the most appropriate synonym of the given word. VENERATION

- A. Disrespect
- B. Reverence
- C. Hatred
- D. Neglect

Answer: B

Sol: The correct option is (b).

VENERATION means deep respect, honour, or worship shown towards someone or something considered highly important or sacred. It expresses sincere admiration and a feeling of reverence. (Hindi meaning: श्रद्धा / आदर-भाव)

Example: The great poet is held in veneration by readers across the country.

Reverence means a feeling of deep respect and admiration, often mixed with awe, especially for something holy or highly respected. It matches the sense of honour and respect contained in "veneration". (Hindi meaning: आदर / श्रद्धा)

Example: The students listened to the teacher with reverence and attention.

Synonyms (of Veneration): reverence, respect, adoration, homage.

Antonyms (of Veneration): contempt, disrespect, scorn, disregard.

Meanings of all the other given options:

- **Option (a) Disrespect:** lack of respect; rude behaviour. (Hindi meaning: अनादर)
- **Option (c) Hatred:** intense dislike or hostility. (Hindi meaning: घृणा)
- **Option (d) Neglect:** failure to give proper care or attention. (Hindi meaning: उपेक्षा)

"Veneration" clearly conveys honour and deep respect, therefore "Reverence" is the closest synonym. "So the correct answer is (b)"

Q.77 Choose the correct meaning of the idiom: Bury the hatchet

- A. Start a fight again
- B. End a quarrel and make peace
- C. Hide the truth
- D. Win an argument

Answer: B

Sol: The correct option is (b).

Bury the hatchet means to stop fighting or arguing with someone and become friendly again. It refers to ending hostility and settling differences peacefully. (Hindi idiom meaning: झगड़ा खत्म करके सुलह करना)

Example: After years of rivalry, the two neighbours finally decided to bury the hatchet and live peacefully.

Why option (b) is correct: The phrase clearly indicates reconciliation and the end of conflict, which is exactly expressed by "End a quarrel and make peace".

Why other options are incorrect:

- **Option (a):** This is the opposite idea; it suggests restarting conflict.
- **Option (c):** Hiding the truth relates to secrecy, not reconciliation.
- **Option (d):** Winning an argument means defeating someone in debate, not making peace.

Other related idioms and their meanings:

- **Patch up:** to repair a relationship after a quarrel. (Hindi: सुलह करना)
- **Call a truce:** to agree to stop fighting for some time. (Hindi: संघर्ष रोकने पर सहमत होना)
- **Let bygones be bygones:** to forget past disagreements and move on. (Hindi: बीती बातों को भूल जाना)

Thus, the idiom points to ending hostility and restoring peace. "So the correct answer is (b)"

Q.78 Select the correctly spelt word meaning “a person who praises others to gain favour.”

- A. Adulator
- B. Adullator
- C. Addulator
- D. Adulater

Answer: A

Sol: The correct option is (a).

Option (a) is the correctly spelt word.

Correct spelling: Adulator means a person who praises someone excessively, often to gain personal advantage or favour. Such praise is usually insincere and flattering. (Hindi meaning: चापलूस / खुशामदी)

Example: The adulator kept complimenting the officer to obtain a promotion.

Meanings of all the given options:

- **Option (a) Adulator:** a flatterer who praises others to gain favour. (Hindi: चापलूस)
- **Option (b) Adullator:** incorrect spelling; not a standard English word. (Hindi: गलत वर्तनी)
- **Option (c) Addulator:** incorrect spelling; not a standard English word. (Hindi: गलत वर्तनी)
- **Option (d) Adulater:** incorrect spelling; resembles “adulterate/adulterer” in form but is not correct here. (Hindi: गलत वर्तनी)

Part of speech: “Adulator” is a **noun** (a naming word for a person).

Therefore, the word that correctly fits the meaning and spelling is “Adulator”. “So the correct answer is (a)”

Q.79 Identify the misspelt word:

- A. Hagiography
- B. Lexicography
- C. Calligraphy
- D. Pshephology

Answer: D

Sol: The correct option is (d).

Option (d) contains the misspelt word.

Correct spelling is: Psephology (not “Pshephology”). It means the study of elections, voting patterns, and electoral behaviour, often used in political science and survey analysis. (Hindi meaning: चुनाव-विज्ञान / मतदान अध्ययन)

Example: The analyst used psephology to interpret voting trends in the recent election.

Why option (d) is incorrect: The extra letter sequence “sh” is wrongly inserted; the accepted spelling begins with “pse-” (silent “p”), followed by “ephology”.

Meanings of all the given options:

- **Option (a) Hagiography:** writing about the lives of saints or highly admired people; often overly praising. (Hindi: संत-चरित लेखन / अतिशयोक्तिपूर्ण जीवनी)
- **Option (b) Lexicography:** the practice of compiling dictionaries. (Hindi: शब्दकोश-निर्माण)
- **Option (c) Calligraphy:** decorative handwriting or beautiful lettering. (Hindi: सुंदर लेखन-कला)
- **Option (d) Pshephology:** incorrect spelling of “Psephology”. (Hindi: गलत वर्तनी)

Part of speech: “Psephology” is a **noun** (name of a field of study).

Hence, the misspelt word is in option (d). “So the correct answer is (d)”

Q.80 Which term refers to: "A storytelling method in which the narrative moves ahead to events that will occur later"?

- A. Foreshadowing
- B. Prolepsis
- C. Analepsis
- D. Retrospection

Answer: B

Sol: The correct option is (b).

Prolepsis is a narrative technique in which the story jumps forward in time and presents future events before they actually occur in the chronological sequence. It is commonly called a **flash-forward**. (Hindi meaning: भविष्य-दर्शन / कथा में आगे की घटनाओं का पहले दिखना)

Example: In the opening scene, the film uses prolepsis to show the hero's future victory, and then returns to his struggles.

Why option (b) is correct: The definition given clearly describes moving ahead to future events, which is exactly the function of prolepsis (flash-forward).

Why other options are incorrect:

- **Option (a) Foreshadowing:** gives hints or clues about future events but does not directly shift the narrative to the future. (Hindi: पूर्व-संकेत)
- **Option (c) Analepsis:** a shift back to past events; it is a **flashback**. (Hindi: अतीत-प्रसंग / फ्लैशबैक)
- **Option (d) Retrospection:** looking back on past events in reflection; not a forward jump in narrative time. (Hindi: पश्चदृष्टि / पीछे मुड़कर देखना)

Therefore, the storytelling method described is "Prolepsis". "So the correct answer is (b)"

Q.81 A sentence is provided in direct speech. From the four given options, choose the one that most accurately conveys the sentence in its corresponding indirect speech.

"Although the evidence was clear, the committee decided to disregard it," she remarked.

- A. She remarked the evidence had been clear, but committee disregarded it.
- B. She remarked that although the evidence had been clear, the committee had decided to disregard it.
- C. She remarked although evidence was clear, committee disregarded them.
- D. She remarked that although evidence was clear, the committee decided to disregard it.

Answer: B

Sol: The correct option is (b).

To convert **direct speech** into **indirect speech**, we generally follow these steps:

- Add the conjunction **that** after the reporting verb when appropriate.
- If the reporting verb is in the **past** (here, "remarked"), we usually apply **backshift** of tense.
- Change pronouns and time expressions if needed (here, no time word is present; pronouns remain the same).

Direct sentence: Although the evidence **was** clear, the committee **decided** to disregard it.

Tense changes due to past reporting verb "remarked":

- **was** (Simple Past) → **had been** (Past Perfect)
- **decided** (Simple Past) → **had decided** (Past Perfect)

Correct indirect form: She remarked that although the evidence **had been** clear, the committee **had decided** to disregard it.

Why other options are incorrect:

- **Option (a):** Missing article "the" before committee and structure is incomplete/unnatural; also weak linkage of clauses.
- **Option (c):** Incorrect pronoun "them" for "evidence" (singular/uncountable here) and missing necessary connectors/articles.
- **Option (d):** Does not backshift "was" and "decided" even though reporting verb is past; hence less accurate for standard exam conversion.

Thus, option (b) follows correct rules of tense backshift and reporting structure. "So the correct answer is (b)"

Q.82 A sentence is provided in indirect speech. From the four given options, choose the one that most accurately conveys the sentence in its corresponding direct speech.

The instructor warned the trainees that if they did not submit the form by evening, they would not be allowed to attend the workshop.

- A. "You will not be allowed to attend the workshop if you don't submit the form by evening," the instructor warned them.
- B. "If you haven't submitted the form by evening, you won't be allowed to attend the workshop," the instructor warned.
- C. "Submit the form by evening or you will not be allowed to attend the workshop," said the instructor.
- D. "If you fail to submit the form by evening, you won't be allowed to attend the workshop," said the instructor.

Answer: D

Sol: The correct option is (d).

To convert **indirect speech** into **direct speech**, we typically do the following:

- Remove the conjunction **that** and present the exact words within quotation marks.
- Change pronouns: **they** (trainees) becomes **you** in direct address.
- Reverse tense backshift (where appropriate): **did not submit** becomes a present/future condition in direct speech; **would not be allowed** becomes **won't be allowed** (will not).
- Keep the warning/condition meaning intact.

Indirect sentence meaning: The instructor gave a warning with a condition: failure to submit the form by evening will result in not being allowed to attend.

Why option (d) is the best direct form: It expresses the same conditional warning clearly: "If you fail to submit... you won't be allowed..." which matches the original sense of warning and consequence.

Why other options are incorrect/less accurate:

- **Option (a):** Meaning is close, but the conditional order is reversed and "warned them" adds an object; still possible, but option (d) mirrors standard exam phrasing more precisely with the "if" clause leading.
- **Option (b):** Uses present perfect "haven't submitted" which changes the time reference and suggests the deadline is already near/past in a different way; it does not match "by evening" as a future deadline as cleanly.
- **Option (c):** Uses an imperative command form; while it conveys warning, it shifts the structure from a conditional warning to an instruction, making it less faithful to the given indirect statement.

Hence, the most accurate corresponding direct speech is option (d). "So the correct answer is (d)"

Q.83 Rearrange the following sentences in correct order to make a meaningful sentence.

P: is strongly required

Q: to curb the exploitation of personal information

R: a robust mechanism

S: for data protection rules

- A. PRSQ
- B. SQPR
- C. RPQS
- D. QSRP

Answer: C

Sol: The correct option is (c).

The correct order must form a grammatically meaningful sentence with a clear subject, verb, and purpose/complement.

Step-by-step arrangement:

- **Start with the subject:** "a robust mechanism" (R) is a complete noun phrase and naturally begins the sentence.
- **Add the verb phrase:** "is strongly required" (P) completes the main clause by stating the necessity of the mechanism.
- **Add the purpose:** "to curb the exploitation of personal information" (Q) explains why the mechanism is required (purpose infinitive).
- **Add the context/complement:** "for data protection rules" (S) indicates the domain/context in which the mechanism is needed.

Final meaningful sentence (RPQS): "A robust mechanism is strongly required to curb the exploitation of personal information for data protection rules."

Why other options do not fit:

- **Option (a) PRSQ:** starts with a verb phrase ("is strongly required") without a proper subject.
- **Option (b) SQPR:** begins with a prepositional phrase ("for data protection rules") and lacks a logical subject-verb flow.

- **Option (d) QSRP:** begins with an infinitive purpose phrase ("to curb...") without stating what is required first; the structure becomes awkward.

Therefore, option (c) provides the correct grammatical and logical order. "So the correct answer is (c)"

Q.84 Convert the sentence provided below from its passive voice structure to an active voice structure:

The safety checks had been ignored by the contractors before the inspection.

- The contractors have ignored the safety checks before the inspection.
- The contractors ignore the safety checks before the inspection.
- The contractors were ignoring the safety checks before the inspection.
- The contractors had ignored the safety checks before the inspection.

Answer: D

Sol: The correct option is (d).

The given sentence is in **passive voice** and uses the tense **Past Perfect Passive**:

Passive structure (Past Perfect Passive): Subject (receiver) + **had been** + V3 + by + agent

Sentence: "The safety checks **had been ignored** by the contractors..."

Steps to convert into active voice:

- Make the **agent** (doer) the subject: "the contractors".
- Use **Past Perfect Active** tense: "had" + V3.
- Make the passive subject (receiver) the object: "the safety checks".
- Keep the time phrase unchanged: "before the inspection".

Active structure (Past Perfect Active): Subject + **had** + V3 + object + time phrase

Correct active sentence: "The contractors **had ignored** the safety checks before the inspection."

Why other options are incorrect:

- **Option (a):** Present Perfect ("have ignored") does not match the past perfect time reference "had been ignored".
- **Option (b):** Simple Present ("ignore") is incorrect for a completed past action before another past event.
- **Option (c):** Past Continuous ("were ignoring") shows an ongoing past action, not a completed one before inspection.

Hence, option (d) correctly converts the sentence into active voice with the same tense and meaning. "So the correct answer is (d)"

Q.85 Select the most appropriate antonym of the given word. **Resolute**

- Determined
- Stubborn
- Hesitant
- Steadfast

Answer: C

Sol: The correct option is (c).

Resolute means firmly decided, strongly determined, and not likely to change one's mind. It indicates strong willpower and decisiveness. (Hindi meaning: दृढ़ / अटल / संकल्पबद्ध)

Example: She remained resolute in her decision to prepare daily despite difficulties.

Hesitant means uncertain, doubtful, or slow to act due to lack of confidence or decision. It reflects indecision, which is the opposite of being resolute. (Hindi meaning: हिचकिचाने वाला / संकोची)

Example: He was hesitant to accept the offer without reading the terms carefully.

Synonyms (of Resolute): determined, steadfast, firm, unwavering.

Antonyms (of Resolute): hesitant, indecisive, wavering, uncertain.

Meanings of all the other given options:

- **Option (a) Determined:** having a strong will to achieve something. (Hindi: दृढ़ निश्चयी)
- **Option (b) Stubborn:** refusing to change one's opinion; obstinate. (Hindi: हठी)
- **Option (d) Steadfast:** firm and unwavering in belief or purpose. (Hindi: अटल)

Thus, the most appropriate antonym of "resolute" is "hesitant". "So the correct answer is (c)"

Q.86 Change the following from active to passive:

The review board will be assessing the effectiveness of the policy throughout the next semester.

- The effectiveness of the policy will be being assessed by the review board throughout the next semester.
- The policy's effectiveness was assessed by the board throughout the next semester.
- The effectiveness of the policy will have been assessed by the board throughout the next semester.
- The review board would be assessing the effectiveness throughout the next semester.

Answer: A

Sol: The correct option is (a).

The given sentence is in **active voice** and uses **Future Continuous Tense**:

Active structure (Future Continuous): Subject + **will be** + V1 + ing + object

Sentence: "The review board **will be assessing** the effectiveness of the policy..."

Steps to convert into passive voice:

- Make the object the subject: "the effectiveness of the policy".
- Use the passive form of Future Continuous: **will be being** + V3.
- Add the agent with "by" if needed: "by the review board".
- Keep the time phrase intact: "throughout the next semester".

Passive structure (Future Continuous): Object (as subject) + **will be being** + V3 + by + agent

Correct passive sentence: "The effectiveness of the policy **will be being assessed** by the review board throughout the next semester."

Why other options are incorrect:

- **Option (b):** Uses Simple Past ("was assessed"), which changes the tense completely and is incorrect with "next semester".
- **Option (c):** Uses Future Perfect Passive ("will have been assessed"), not Future Continuous; meaning changes from ongoing to completed.
- **Option (d):** Keeps active voice and changes modality ("would"), so it is not passive and not matching the intended tense.

Therefore, option (a) is the correct passive voice conversion. "So the correct answer is (a)"

Q.87 Identify the correct passive voice form of the following sentence:

"Habits exert a strong influence on our actions."

Researchers note that habits develop because the brain is always searching for shortcuts to reduce effort. If left unchecked, the brain tends to convert repeated actions into habits, since this allows thinking to "switch off" more frequently. This tendency to save mental energy is highly beneficial. A brain that works efficiently needs less space, leading to a smaller skull, which makes childbirth easier and ultimately improves chances of survival.

However, saving effort is not the only factor. Habits strongly shape behavior because once established, they function automatically. More importantly, habits can be modified, substituted, or resisted—but this becomes possible only when we grasp the mechanism behind them.

Every habit is built on a neural loop containing three components: a cue, a routine, and a reward. This cycle lies at the heart of habitual action. The cue is the signal that pushes the brain into autopilot, the routine is the action performed, and the reward is what trains the brain to remember the pattern for later.

Understanding this cycle is the first move toward controlling habits—whether the goal is to eliminate an unhealthy one or build a productive one.

- Our actions are strongly influenced by habits.
- A strong influence is exerted on our actions by habits.

- C. Our actions have been strongly influenced by habits.
D. Habits strongly influence our actions.

Answer: A

Sol: The correct option is (a).

The given sentence is: "Habits exert a strong influence on our actions." We must identify the correct **passive voice** form.

Step-by-step conversion to passive:

- **Active subject (doer):** Habits
- **Active verb:** exert
- **Active object:** a strong influence on our actions

In passive voice, the **object** becomes the subject, and we use: **is/are + V3** (for simple present passive).

Correct passive structure (Simple Present): Object + is + V3 + by + subject

Correct conversion: "A strong influence on our actions **is exerted** by habits."

Why option (a) is correct: It exactly follows the passive structure: "A strong influence on our actions **is exerted** by habits."

Why other options are incorrect:

- **Option (b):** "A strong influence is exerted on our actions by habits" is grammatically possible, but it slightly shifts the prepositional attachment; the direct object in the active is "a strong influence on our actions", so option (a) is the most accurate and complete transfer of the object phrase.
- **Option (c):** Uses Present Perfect Passive ("have been influenced"), changing tense and meaning.
- **Option (d):** Remains active voice, not passive.

Hence, option (a) is the correct passive voice form. "So the correct answer is (a)"

Q.88 Choose the correct indirect speech conversion of the sentence.

"Researchers say, 'Habits form because the brain continually seeks ways to reduce effort.'"

Researchers note that habits develop because the brain is always searching for shortcuts to reduce effort. If left unchecked, the brain tends to convert repeated actions into habits, since this allows thinking to "switch off" more frequently. This tendency to save mental energy is highly beneficial. A brain that works efficiently needs less space, leading to a smaller skull, which makes childbirth easier and ultimately improves chances of survival.

However, saving effort is not the only factor. Habits strongly shape behavior because once established, they function automatically. More importantly, habits can be modified, substituted, or resisted—but this becomes possible only when we grasp the mechanism behind them.

Every habit is built on a neural loop containing three components: a cue, a routine, and a reward. This cycle lies at the heart of habitual action. The cue is the signal that pushes the brain into autopilot, the routine is the action performed, and the reward is what trains the brain to remember the pattern for later.

Understanding this cycle is the first move toward controlling habits—whether the goal is to eliminate an unhealthy one or build a productive one.

- A. Researchers say that habits form because the brain continually seeks ways to reduce effort.
B. Researchers said that habits formed because the brain continually sought ways to reduce effort.
C. Researchers say habits had formed because the brain continually sought ways to reduce effort.
D. Researchers have said that habits form as the brain continually sought ways to reduce effort.

Answer: A

Sol: The correct option is (a).

To convert the given direct speech into indirect speech, we apply the standard reporting rules while also noticing an important point: the reporting verb is in the **present tense** ("Researchers say"). When the reporting verb is present, **tense backshift is generally not required**.

Direct speech: Researchers say, "Habits form because the brain continually seeks ways to reduce effort."

Key rules applied:

- Add the conjunction **that** after the reporting verb for a statement.
- No backshift because **say** is present and the statement is a general truth/scientific observation.
- Maintain subject and meaning exactly: habits form (present), brain seeks (present).

Correct indirect speech: Researchers say that habits form because the brain continually seeks ways to reduce effort.

Why other options are incorrect:

- **Option (b):** Unnecessarily shifts everything into past; it changes the statement from a general truth to a past report.
- **Option (c):** Uses mixed tenses ("say" with "had formed/ sought"), which is grammatically inconsistent and changes meaning.
- **Option (d):** Combines "have said" with "sought" (past), creating tense mismatch and an illogical timeline.

Hence, option (a) is the most accurate conversion. "So the correct answer is (a)"

Q.89 What is the meaning of the word "develop" in the sentence?

Researchers note that habits develop because the brain is always searching for shortcuts to reduce effort.

Researchers note that habits develop because the brain is always searching for shortcuts to reduce effort. If left unchecked, the brain tends to convert repeated actions into habits, since this allows thinking to "switch off" more frequently. This tendency to save mental energy is highly beneficial. A brain that works efficiently needs less space, leading to a smaller skull, which makes childbirth easier and ultimately improves chances of survival.

However, saving effort is not the only factor. Habits strongly shape behavior because once established, they function automatically. More importantly, habits can be modified, substituted, or resisted—but this becomes possible only when we grasp the mechanism behind them.

Every habit is built on a neural loop containing three components: a cue, a routine, and a reward. This cycle lies at the heart of habitual action. The cue is the signal that pushes the brain into autopilot, the routine is the action performed, and the reward is what trains the brain to remember the pattern for later.

Understanding this cycle is the first move toward controlling habits—whether the goal is to eliminate an unhealthy one or build a productive one.

- A. To fade away slowly
- B. To come into being gradually
- C. To stay fixed forever
- D. To move in reverse

Answer: B

Sol: The correct option is (b).

In the sentence "Researchers note that habits **develop** because the brain is always searching for shortcuts to reduce effort," the word "develop" means that habits **form** or **come into existence** over time through repetition.

Why option (b) is correct: "To come into being gradually" matches the idea that habits are not created instantly; they form step-by-step as repeated actions become automatic. (Hindi meaning: धीरे-धीरे बनना / विकसित होना)

Context support from the passage: The passage explains that repeated actions are converted into habits because it saves mental energy, showing a gradual process where the brain learns a pattern through the cue-routine-reward loop.

Why other options are incorrect:

- **Option (a):** "To fade away slowly" means to disappear; it is opposite of forming. (Hindi: धीरे-धीरे मिटना)
- **Option (c):** "To stay fixed forever" suggests no change; "develop" suggests a process of formation/change. (Hindi: स्थायी रहना)
- **Option (d):** "To move in reverse" is unrelated to habit formation. (Hindi: उल्टा चलना)

Therefore, "develop" here means "to come into being gradually." "So the correct answer is (b)"

Q.90 Choose the best synonym for the word "signal" as used in the passage:

"The cue is the signal that pushes the brain into autopilot."

Researchers note that habits develop because the brain is always searching for shortcuts to reduce effort. If left unchecked, the brain tends to convert repeated actions into habits, since this allows thinking to "switch off" more frequently. This tendency to save mental energy is highly beneficial. A brain that works efficiently needs less space, leading to a smaller skull, which makes childbirth easier and ultimately improves chances of survival.

However, saving effort is not the only factor. Habits strongly shape behavior because once established, they function automatically. More importantly, habits can be modified, substituted, or resisted—but this becomes possible only when we grasp the mechanism behind them.

Every habit is built on a neural loop containing three components: a cue, a routine, and a reward. This cycle lies at the heart of habitual action. The cue is the signal that pushes the brain into autopilot, the routine is the action performed, and the reward is what trains the brain to remember the pattern for later.

Understanding this cycle is the first move toward controlling habits—whether the goal is to eliminate an unhealthy one or build a productive one.

- A. Restriction
- B. Trigger
- C. Interruption

D. Ending

Answer: B

Sol: The correct option is (b).

In the given line of the passage, the word "signal" is used in this sense: "The cue is the signal that pushes the brain into autopilot." Here, "signal" refers to something that **initiates** or **sets off** an action automatically.

Why option (b) is correct: **Trigger** means a cause or stimulus that makes something start or happen, especially suddenly. In habit formation, a "cue" acts as a trigger that starts the routine. (Hindi meaning: प्रेरक संकेत / ट्रिगर)

Context-based explanation: The passage explains a habit loop: cue, routine, reward. The cue functions like a trigger because it signals the brain to shift into an automatic mode, leading to the routine without deliberate thinking.

Why other options are incorrect:

- **Option (a) Restriction:** means limitation or control; it does not convey the idea of starting an action. (Hindi: प्रतिबंध)
- **Option (c) Interruption:** means a break or disturbance; it is opposite to initiating a routine. (Hindi: व्यवधान)
- **Option (d) Ending:** means conclusion; it does not match the meaning of a starting cue. (Hindi: समापन)

Thus, "trigger" best matches "signal" in the passage. "So the correct answer is (b)"

Q.91 . According to the passage, why does the brain convert repeated actions into habits?

Researchers note that habits develop because the brain is always searching for shortcuts to reduce effort. If left unchecked, the brain tends to convert repeated actions into habits, since this allows thinking to "switch off" more frequently. This tendency to save mental energy is highly beneficial. A brain that works efficiently needs less space, leading to a smaller skull, which makes childbirth easier and ultimately improves chances of survival.

However, saving effort is not the only factor. Habits strongly shape behavior because once established, they function automatically. More importantly, habits can be modified, substituted, or resisted—but this becomes possible only when we grasp the mechanism behind them. Every habit is built on a neural loop containing three components: a cue, a routine, and a reward. This cycle lies at the heart of habitual action. The cue is the signal that pushes the brain into autopilot, the routine is the action performed, and the reward is what trains the brain to remember the pattern for later.

Understanding this cycle is the first move toward controlling habits—whether the goal is to eliminate an unhealthy one or build a productive one.

- A. Because habits save mental energy and support survival advantages.
- B. Because habits make the brain physically larger.
- C. Because habits stop the brain from working automatically.
- D. Because habits remove the need to ever learn again.

Answer: A

Sol: The correct option is (a).

The passage states that the brain is always searching for shortcuts to reduce effort. When actions are repeated, the brain converts them into habits so that thinking can "switch off" more often. This saving of mental energy is described as highly beneficial and connected with survival advantages (efficient brain needs less space, smaller skull, easier childbirth, improved survival chances).

Why option (a) is correct: It directly matches the passage's explanation: habits help save mental energy and provide benefits that support survival, because automatic behaviour reduces cognitive effort and increases efficiency. (Hindi sense: मानसिक ऊर्जा बचाना और जीवन-रक्षा में लाभ)

Text-based support:

- The brain seeks shortcuts to reduce effort.
- Repeated actions become habits so thinking can switch off.
- Saving mental energy is beneficial and linked to survival-related advantages.

Why other options are incorrect:

- **Option (b):** The passage says an efficient brain needs less space, not that habits make it larger.
- **Option (c):** The passage states habits function automatically; they do not stop automatic functioning.
- **Option (d):** The passage never says habits remove the need to learn again; it says habits can be modified when we understand the mechanism.

Therefore, the brain forms habits primarily to save effort and gain efficiency that supports survival. "So the correct answer is (a)"

Q.92 Improve the sentence by choosing the correct tense form of the highlighted verb.

Sakshi live in this town for five years before she shifted to another state.

- A. lives
- B. lived
- C. had lived
- D. have lived

Answer: C

Sol: The correct option is (c).

The sentence contains two past actions:

- Action 1: Sakshi lived in the town for five years.
- Action 2: She shifted to another state.

When two actions happened in the past, and we want to show that one action was completed **before** the other, we use the **Past Perfect Tense** for the earlier action.

Rule: Past Perfect = **had** + V3, used for the earlier past action.

Correct sentence: Sakshi **had lived** in this town for five years before she shifted to another state.

Example of the same rule: He **had finished** his homework before he went out to play.

Why other options are incorrect:

- **Option (a) lives:** Simple Present does not match the past context "before she shifted".
- **Option (b) lived:** Simple Past does not clearly show the earlier action was completed before shifting; exams prefer Past Perfect with "before".
- **Option (d) have lived:** Present Perfect is incorrect because the action is finished and linked with a definite past event "shifted".

Therefore, the best tense form is "had lived". "So the correct answer is (c)"

Q.93 Find the part of the sentence that contains an error:

The supervisor demanded that (1)/ each participant submits (2)/ the report before (3)/ the meeting ended. (4)/

- A. (1)
- B. (2)
- C. (3)
- D. (4)

Answer: B

Sol: The correct option is (b).

In the sentence, the error lies in part (2): "each participant **submits**".

Reason: After verbs like **demand, suggest, insist, recommend, propose**, when followed by "that", English commonly uses the **subjunctive/base form** of the verb (V1) irrespective of the subject (singular/plural).

Rule: demand + that + subject + **base verb (V1)** (or "should" + V1)

Incorrect: demanded that each participant **submits**

Correct: demanded that each participant **submit** the report

Correct sentence: The supervisor demanded that each participant **submit** the report before the meeting ended.

Example of the same rule: The teacher insisted that every student **be** on time.

Why other parts are correct:

- **Part (1):** "The supervisor demanded that" is correct reporting structure.
- **Part (3):** "the report before" is correct phrasing.
- **Part (4):** "the meeting ended" is acceptable past clause showing the deadline context.

Hence, option (b) contains the error and the correction is "submit". "So the correct answer is (b)"

Q.94 Which of the following words is incorrectly spelled?

- A. Disambeguate
- B. Equilibrium
- C. Equivocal
- D. Advertently

Answer: A

Sol: The correct option is (a).

Option (a) is incorrectly spelled.

Correct spelling is: Disambiguate. It means to make something clear by removing confusion or uncertainty, especially when a word, statement, or situation has more than one possible meaning. (Hindi meaning: अस्पष्टता दूर करना / स्पष्ट करना)

Example: The teacher asked the student to disambiguate the sentence by adding proper punctuation.

Why option (a) is wrong: The sequence "-begu-" is incorrect; the correct word contains "-bigu-" as in "disambiguate".

Meanings of all the given options:

- **Option (a) Disambeguate:** incorrect spelling of "Disambiguate". (Hindi: गलत वर्तनी)
- **Option (b) Equilibrium:** a state of balance between opposing forces. (Hindi: संतुलन)
- **Option (c) Equivocal:** having more than one possible meaning; ambiguous. (Hindi: द्विअर्थी / अस्पष्ट)
- **Option (d) Advertently:** intentionally; on purpose (rare in modern usage, opposite of "inadvertently"). (Hindi: जानबूझकर)

Part of speech: "Disambiguate" is a **verb** (action word) meaning "to clarify".

Therefore, the incorrectly spelled word is in option (a). "So the correct answer is (a)"

Q.95 Convert the sentence provided below from its passive voice structure to an active voice structure:

The manuscript is being examined by the editor.

- A. The editor was examining the manuscript.
- B. The editor has examined the manuscript.
- C. The editor is examining the manuscript.
- D. The editor examines the manuscript.

Answer: C

Sol: The correct option is (c).

The given sentence is in **passive voice** and the tense is **Present Continuous Passive**:

Passive structure (Present Continuous Passive): Subject (receiver) + is/are being + V3 + by + agent

Sentence: "The manuscript **is being examined** by the editor."

Steps to convert into active voice:

- Make the agent the subject: "the editor".
- Use Present Continuous Active: **is/are** + V1 + ing.
- Make the passive subject the object: "the manuscript".

Active structure (Present Continuous): Subject + is/are + V1 + ing + object

Correct active sentence: "The editor **is examining** the manuscript."

Why other options are incorrect:

- **Option (a):** Past Continuous changes the time from present ongoing to past ongoing.
- **Option (b):** Present Perfect shows completion, not an ongoing action.
- **Option (d):** Simple Present suggests a habitual action, not an action happening right now.

Hence, option (c) is the correct active voice conversion. "So the correct answer is (c)"

Q.96 Find the part of the sentence that contains an error:

Hardly had the meeting (1)/ started when the manager (2)/ announce the new policy (3)/ to everyone present. (4)/

- A. (1)
- B. (2)
- C. (3)
- D. (4)

Answer: C

Sol: The correct option is (c).

The error is in part (3): "announce".

Rule involved (Hardly...when): When a sentence begins with **Hardly / Scarcely / No sooner**, we use **inversion** and the structure is typically:

- **Hardly had** + subject + V3, **when** + subject + V2.

Here:

- "Hardly had the meeting started..." is correct (Past Perfect with "had" + V3).
- After "when", the next clause should be in **Simple Past (V2)**: "the manager **announced** ..."

Incorrect part: "the manager **announce** the new policy" (base form is wrong here)

Correct form: "the manager **announced** the new policy"

Correct sentence: Hardly had the meeting started when the manager **announced** the new policy to everyone present.

Example of the same pattern: Hardly had I reached home when it **began** to rain.

Why other parts are correct:

- **Part (1):** "Hardly had the meeting" is correct inversion.
- **Part (2):** "started when the manager" is correct linkage of clauses.
- **Part (4):** "to everyone present" is grammatically correct.

Therefore, option (c) contains the error. "So the correct answer is (c)"

Q.97 Fill in the blank with the most appropriate option:

Out of all the proposals reviewed, his plan offered the ___ solution with clear reasoning and strong support.

- A. most convincing
- B. more convincing
- C. much convincing
- D. most convinced

Answer: A

Sol: The correct option is (a).

The sentence compares one plan with **all the proposals reviewed**. When we compare one item with a whole group, we generally use the **superlative degree**.

Correct phrase: "the **most convincing** solution" means the solution that is the strongest, most believable, and best supported among all options.
(Hindi meaning of "convincing": विश्वसनीय / प्रभावी)

Example: Among all candidates, her explanation was the most convincing.

Why option (a) is correct: "Most convincing" is the superlative form and matches "out of all", indicating the highest degree among many.

Why other options are incorrect:

- **Option (b) more convincing:** comparative degree is used for comparison between two (or a limited direct comparison), not typically with "out of all".
- **Option (c) much convincing:** grammatically incorrect; "much" does not directly form a correct adjective phrase here.
- **Option (d) most convinced:** "convinced" describes a person's state of belief, not the quality of a solution; the meaning becomes incorrect.

Hence, the best word to complete the sentence is "most convincing". "So the correct answer is (a)"

Q.98 Which of the following terms describes: "An inability to identify or describe one's emotions clearly"?

- A. Melancholia
- B. Alexithymia
- C. Catharsis
- D. Mania

Answer: B

Sol: The correct option is (b).

Alexithymia refers to difficulty or inability in identifying, understanding, and describing one's own emotions. People with alexithymia often struggle to put feelings into words and may appear emotionally unaware. (Hindi meaning: भावनाओं को पहचानने/व्यक्त करने में कठिनाई)

Example: Due to alexithymia, he found it hard to explain whether he felt sadness or anxiety.

Why option (b) is correct: The definition given in the question exactly matches the psychological term "alexithymia".

Why other options are incorrect:

- **Option (a) Melancholia:** a deep, persistent sadness or depression-like state. (Hindi: विषाद)
- **Option (c) Catharsis:** emotional release that provides relief after expressing feelings. (Hindi: भावनात्मक शुद्धि / भाव-विसर्जन)
- **Option (d) Mania:** an abnormally elevated mood, excessive energy, or excitement. (Hindi: उन्माद)

Therefore, the correct term is "Alexithymia". "So the correct answer is (b)"

Q.99 Rearrange the following sentences in correct order to make a meaningful passage.

1. Public complaints are logged through the central grievance system.
2. Submitted cases are labelled according to category and urgency.
3. Detailed assessments are forwarded to independent review teams.
4. Practical summaries are drafted for senior decision-makers.

- A. 1-2-3-4
- B. 1-2-4-3
- C. 3-1-2-4
- D. 4-3-2-1

Answer: A

Sol: The correct option is (a).

To form a meaningful passage, we must arrange the steps in a logical workflow from receiving complaints to producing outputs for decision-makers.

Correct sequence: 1-2-3-4

- **Sentence 1** must come first because it introduces the starting point: public complaints are logged into the system.
- **Sentence 2** logically follows because after logging, the cases are labelled/classified by category and urgency for processing.
- **Sentence 3** comes next because once categorized, detailed assessments can be prepared and forwarded to independent review teams for evaluation.
- **Sentence 4** should be last because summaries are typically drafted after assessments/reviews to present practical conclusions to senior decision-makers.

Why other sequences are incorrect:

- **Option (b):** Places summaries (4) before forwarding assessments (3), which reverses the logical process.
- **Option (c):** Starts with forwarding assessments (3) before complaints are logged (1), which is illogical.
- **Option (d):** Completely reverses the workflow, starting with summaries and ending with logging complaints.

Hence, the correct order is 1-2-3-4. "So the correct answer is (a)"

Q.100 Rearrange the following sentences in correct order to make a meaningful passage.

1. The initial figures were gathered from departmental records.
2. Tables were prepared to present the findings clearly.
3. The information was then checked for errors and gaps.
4. A concluding report was forwarded to the authority.

- A. 4-3-2-1
- B. 1-3-2-4
- C. 4-1-2-3
- D. 3-1-4-2

Answer: B

Sol: The correct option is (b).

A meaningful passage should follow the standard order of data handling: collect data, verify it, present it, and finally report it.

Correct sequence: 1-3-2-4

- **Sentence 1** comes first because it describes the initial step: collecting figures from departmental records.
- **Sentence 3** logically follows because after collecting information, it must be checked for errors and gaps to ensure accuracy.
- **Sentence 2** comes next because once verified, the findings are organized into tables for clear presentation.
- **Sentence 4** must be last because after preparing tables and findings, the concluding report is forwarded to the authority.

Why other options are incorrect:

- **Option (a):** Starts with forwarding the report before collecting or checking data, which is illogical.
- **Option (c):** Begins with the concluding report and ends with checking data, reversing the natural workflow.
- **Option (d):** Places forwarding the report (4) before preparing tables (2), which disrupts the logical sequence.

Therefore, the correct order is 1-3-2-4. "So the correct answer is (b)"