



Bihar Public Service Commission, Patna				
Advt. No.- 37/2025, Assistant Section Officer, BPSC				
Mains (Objective) Competitive Examination				
Subject- General Knowledge				
Exam Date: 27-02-2026				
Final Answer key				

Question No. of Series-A	Question No. of Series-B	Question No. of Series-C	Question No. of Series-D	Provisional AnswerKey
1.	16.	36.	46.	A
2.	17.	37.	47.	B
3.	18.	38.	48.	C
4.	19.	39.	49.	C
5.	20.	40.	50.	C
6.	21.	41.	51.	D
7.	22.	42.	52.	B
8.	23.	43.	53.	D
9.	24.	44.	54.	B
10.	25.	45.	55.	C
11.	26.	46.	56.	D
12.	27.	47.	57.	C
13.	28.	48.	58.	C
14.	29.	49.	59.	B
15.	30.	50.	60.	D
16.	31.	51.	61.	B
17.	32.	52.	62.	B
18.	33.	53.	63.	C
19.	34.	54.	64.	A
20.	35.	55.	65.	B
21.	36.	56.	66.	A
22.	37.	57.	67.	D
23.	38.	58.	68.	B
24.	39.	59.	69.	A
25.	40.	60.	70.	C
26.	41.	61.	71.	A
27.	42.	62.	72.	D
28.	43.	63.	73.	C
29.	44.	64.	74.	D
30.	45.	65.	75.	C
31.	46.	66.	76.	D
32.	47.	67.	77.	A
33.	48.	68.	78.	C

Question No. of Series-A	Question No. of Series-B	Question No. of Series-C	Question No. of Series-D	Provisional AnswerKey
34.	49.	69.	79.	B
35.	50.	70.	80.	A
36.	51.	71.	81.	C
37.	52.	72.	82.	D
38.	53.	73.	83.	A
39.	54.	74.	84.	Deleted
40.	55.	75.	85.	D
41.	56.	76.	86.	A
42.	57.	77.	87.	B
43.	58.	78.	88.	B
44.	59.	79.	89.	C
45.	60.	80.	90.	D
46.	61.	81.	91.	B
47.	62.	82.	92.	C
48.	63.	83.	93.	C
49.	64.	84.	94.	B
50.	65.	85.	95.	A
51.	66.	86.	96.	C
52.	67.	87.	97.	C
53.	68.	88.	98.	A
54.	69.	89.	99.	B
55.	70.	90.	100.	C
56.	71.	91.	101.	B
57.	72.	92.	102.	C
58.	73.	93.	103.	A
59.	74.	94.	104.	A
60.	75.	95.	105.	D
61.	76.	96.	106.	B
62.	77.	97.	107.	B
63.	78.	98.	108.	A
64.	79.	99.	109.	D
65.	80.	100.	110.	A
66.	81.	101.	111.	C
67.	82.	102.	112.	D
68.	83.	103.	113.	C
69.	84.	104.	114.	B
70.	85.	105.	115.	A
71.	86.	106.	116.	A
72.	87.	107.	117.	B
73.	88.	108.	118.	A

Question No. of Series-A	Question No. of Series-B	Question No. of Series-C	Question No. of Series-D	Provisional AnswerKey
74.	89.	109.	119.	B
75.	90.	110.	120.	B
76.	91.	111.	121.	D
77.	92.	112.	122.	C
78.	93.	113.	123.	A
79.	94.	114.	124.	Deleted
80.	95.	115.	125.	A
81.	96.	116.	126.	C
82.	97.	117.	127.	D
83.	98.	118.	128.	D
84.	99.	119.	129.	A
85.	100.	120.	130.	D
86.	101.	121.	131.	C
87.	102.	122.	132.	D
88.	103.	123.	133.	C
89.	104.	124.	134.	A
90.	105.	125.	135.	B
91.	106.	126.	136.	C
92.	107.	127.	137.	D
93.	108.	128.	138.	B
94.	109.	129.	139.	B
95.	110.	130.	140.	C
96.	111.	131.	141.	B
97.	112.	132.	142.	D
98.	113.	133.	143.	A
99.	114.	134.	144.	C
100.	115.	135.	145.	C
101.	116.	136.	146.	D
102.	117.	137.	147.	B
103.	118.	138.	148.	C
104.	119.	139.	149.	B
105.	120.	140.	150.	C
106.	121.	141.	1.	B
107.	122.	142.	2.	C
108.	123.	143.	3.	C
109.	124.	144.	4.	D
110.	125.	145.	5.	A
111.	126.	146.	6.	A
112.	127.	147.	7.	A
113.	128.	148.	8.	C

Question No. of Series-A	Question No. of Series-B	Question No. of Series-C	Question No. of Series-D	Provisional AnswerKey
114.	129.	149.	9.	D
115.	130.	150.	10.	B
116.	131.	1.	11.	B
117.	132.	2.	12.	C
118.	133.	3.	13.	A
119.	134.	4.	14.	C
120.	135.	5.	15.	D
121.	136.	6.	16.	A
122.	137.	7.	17.	B
123.	138.	8.	18.	D
124.	139.	9.	19.	C
125.	140.	10.	20.	A
126.	141.	11.	21.	D
127.	142.	12.	22.	B
128.	143.	13.	23.	D
129.	144.	14.	24.	C
130.	145.	15.	25.	B
131.	146.	16.	26.	C
132.	147.	17.	27.	D
133.	148.	18.	28.	B
134.	149.	19.	29.	D
135.	150.	20.	30.	D
136.	1.	21.	31.	A
137.	2.	22.	32.	B
138.	3.	23.	33.	D
139.	4.	24.	34.	C
140.	5.	25.	35.	A
141.	6.	26.	36.	C
142.	7.	27.	37.	B
143.	8.	28.	38.	A
144.	9.	29.	39.	B
145.	10.	30.	40.	A
146.	11.	31.	41.	C
147.	12.	32.	42.	A
148.	13.	33.	43.	B
149.	14.	34.	44.	C
150.	15.	35.	45.	C

Reason as per Set -A

Q.No. 06- No Change.

Reason :- BHEL has production units at Bhopal, Haridwar and Hyderabad. It has only marketing office at Lucknow and many other centres. Hence the correct answer is option 'D'.

Q.No. 07- No Change.

Reason :- The term agro- climatic is related to both agriculture (net sown area) and climate (rainfall, temperature). No other option is related to climate. Planning Commission has mentioned Climatic Variation. Hence the correct answer is option 'B'.

Q.No. 11- No Change.

Reason :- All three institutions were founded under Orientalist influence. Hence the correct answer is option 'D'.

Q.No. 12- No Change.

Reason :- Mercantilism was effective in 18th century. It changed to utilitarianism in 19th century. Hence the correct answer is option 'C'.

Q.No. 15- No Change.

Reason :- India league is also known as Indian league, established in 1885. Hence the correct answer is option 'D'.

Q.No. 17- No Change.

Reason :- All statements are correct. Sarla Devi started Lakshmi Devi Bhandar. Hence the correct answer is option 'B'.

Q.No. 18- No Change.

Reason :- Rajnarain Bose was pioneer of nationalism in Bengal, but he did not founded the Hindu Mela in 1867. Hence the correct answer is option 'C'.

Q.No. 33- No Change.

Reason :- Statement I is correct. According to IEEFA the PLI for solar module and Green Hydrogen Mission have significantly reduced key financing hurdles, but they have not removed all regulatory and operational bottlenecks for private investors. So statement 2 is false. Hence the correct answer is option 'C'.

Q.No. 39- Deleted.

Reason :- (a) Narasimhan Committee (1991 &1998) focus area was reforms in banking Sector.
(b) Kelkar Committee (2002) focus area was tax reforms.
(c) Rangarajan Committee (2008) focus area was financial inclusion accelerating backward regions and rural areas.
(d) Raghuram Rajan committee (2008) was financial reforms and Structural reforms.

Since none of the given options are correct. Hence the question is deleted.

Q.No. 42- No Change.

Reason :- PIB dated 12 Dec, 2025 census of India 2027.

Hence the correct option for 16th Indian census is 'B'.

Q.No. 46- No Change.

Reason :- On the official website of Volleyball Federation of India the date of formation is 1951. Hence correct answer is option 'B'.

Q.No. 62- No Change.

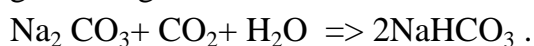
Reason :- Iodine dissolves in CCl_4 (Carbon tetrachloride) most readily as both are non-polar substances and share similar intermolecular forces. Hence the correct answer is option 'B'.

Q.No. 66- No Change.

Reason :- Ether is used as anaesthetic. Carbon tetrachloride is poisonous. Hence the correct answer is option 'C'.

Q.No. 70- No Change.

Reason :- Baking soda is prepared by Sodium Carbonate solution on passing CO_2 gas through it.



Hence the correct answer is option 'A'.

Q.No. 79- Deleted.

Reason :- The Correct order of evolution of organism is

Phytophthora (I) \rightarrow Morchella (IV) \rightarrow Alternaria (III) \rightarrow Agaricus (II)

None of the options is correct. Hence the question is deleted.

Q.No. -82 The Setter's answer is option 'B', but the correct answer is option 'D'.

Reason :- Chromatography involves Adsorption and Partition. It does not inherently uses Microscopy principle in General cases. Hence the correct answer is option 'D'.

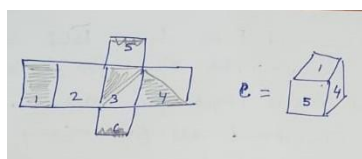
Q.No. 87- No Change.

Reason :- Maximum active resorption of sodium (70-80%) takes place in proximal convoluted tubules.

Source:-NCERT Biology class -XII page no-294. A Text Book of Medical Physiology Guyton & Hall.

Hence the correct answer is option 'D'.

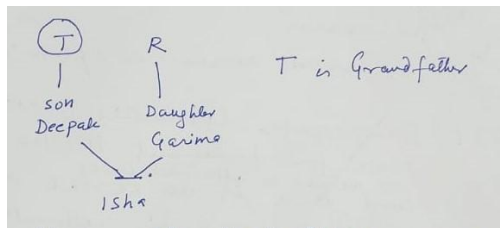
Q.No. 107- No Change



Option 'B' can't be possible as figure 4 is reversed.

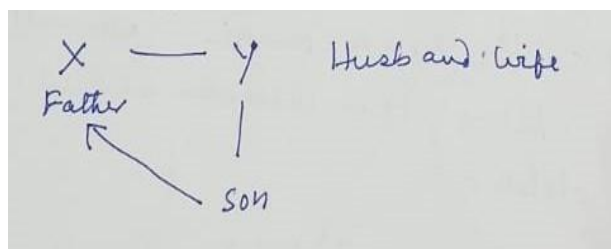
Hence the correct answer is option 'C'.

Q.No. 117- No Change



Hence the correct answer is option 'C'.

Q.No. 119- No Change



Hence the correct answer is option 'C'.

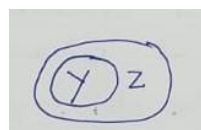
Q.No. 130- No Change

Reason :- April and July starts on the same day and April and Novermber does not starts on the same day.

Hence the correct answer is option 'B'.

Q.No. 146- No Change

Reason :-



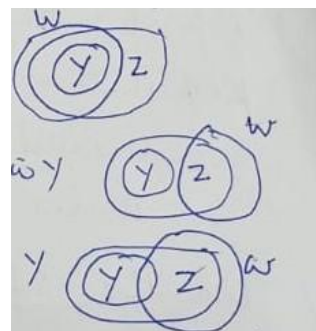
All Y are Z

Some Z are W will have following possiblites:-

1 It overlaps with Y

2 It does not overlaps W Y

3 It parially overlaps W Y



Satatement 1 & 2 both are not definite but either or both may follow.
Hence the correct answer is option 'C'.