

Question Paper Preview

Notations :

- 1.Options shown in green color and with ✓ icon are correct.
- 2.Options shown in red color and with ✗ icon are incorrect.

Question Paper Name:	PGT CHEMISTRY FEMALE 6th July 2018 Shift1
Subject Name:	PGT CHEMISTRY FEMALE
Creation Date:	2018-07-06 13:09:57
Duration:	180
Total Marks:	300
Display Marks:	Yes
Share Answer Key With Delivery Engine:	Yes
Actual Answer Key:	Yes
Calculator:	None
Magnifying Glass Required?:	No
Ruler Required?:	No
Eraser Required?:	No
Scratch Pad Required?:	No
Rough Sketch/Notepad Required?:	No
Protractor Required?:	No

	Mental Ability
Group Number :	1
Group Id :	167943147
Group Maximum Duration :	0
Group Minimum Duration :	0
Revisit allowed for view? :	No
Revisit allowed for edit? :	No
Break time:	0
Group Marks:	20

	Mental Ability
Section Id :	167943206
Section Number :	1
Section type :	Online
Mandatory or Optional:	Mandatory
Number of Questions:	20
Number of Questions to be attempted:	20
Section Marks:	20
Display Number Panel:	Yes
Group All Questions:	No

# Test Prime

**ALL EXAMS,  
ONE SUBSCRIPTION**



**70,000+**  
Mock Tests



**Personalised  
Report Card**



**Unlimited  
Re-Attempt**



**600+**  
Exam Covered



**Previous Year  
Papers**



**500%  
Refund**



**ATTEMPT FREE MOCK NOW**

Sub-Section Id: 167943418  
Question Shuffling Allowed : Yes

Question Number : 1 Question Id : 1679437227 Question Type : MCQ Option Shuffling : Yes Display Question Number : Yes  
Single Line Question Option : No Option Orientation : Vertical

Correct : 1 Wrong : 0.25

Karan said to Navika, "Your father's mother's only daughter-in-law is my sister." How is Karan related to Navika's mother?

Options :

☐ Cousin

☒ Brother

☐ Spouse

☐ Brother-in-law

Question Number : 2 Question Id : 1679437228 Question Type : MCQ Option Shuffling : Yes Display Question Number : Yes  
Single Line Question Option : No Option Orientation : Vertical

Correct : 1 Wrong : 0.25

Select the option that is related to the third term in the same way as the second term is related to the first term.

Bicycle : Ride :: Boat : ?

Options :

☐ Push

☒ Row

☐ Pull

☐ Float

Question Number : 3 Question Id : 1679437229 Question Type : MCQ Option Shuffling : Yes Display Question Number : Yes  
Single Line Question Option : No Option Orientation : Vertical

Correct : 1 Wrong : 0.25

Select the option that is related to the third term in the same way as the second term is related to the first term.

5 : 25 :: 9 : ?

Options :

☐ 90

☐ 54

☒ 81

☐ 63

Question Number : 4 Question Id : 1679437230 Question Type : MCQ Option Shuffling : Yes Display Question Number : Yes  
Single Line Question Option : No Option Orientation : Vertical

Correct : 1 Wrong : 0.25

Select the option that is related to the third term in the same way as the second term is related to the first term.

234 : 24 :: 456 : ?

Options :

✓ 120

✗ 56

✗ 240

✗ 60

Question Number : 5 Question Id : 1679437231 Question Type : MCQ Option Shuffling : Yes Display Question Number : Yes  
Single Line Question Option : No Option Orientation : Vertical

Correct : 1 Wrong : 0.25

Three out of the four words below are similar in a certain way and one is different. Select the option that is different from the others.

Options :

✗ Knife

✗ Axe

✓ Scissors

✗ Hatchet

Question Number : 6 Question Id : 1679437232 Question Type : MCQ Option Shuffling : Yes Display Question Number : Yes  
Single Line Question Option : No Option Orientation : Vertical

Correct : 1 Wrong : 0.25

Arjun starts from his home and goes straight for 3 km. Then he turns right and goes for 5 km. Finally, he turns left and goes for 3 km to reach the temple. To which direction is the temple located from Arjun's home if he started his journey facing North?

Options :

✓ North-East

✗ South-East

✗ North-West

✗ South-West

Question Number : 7 Question Id : 1679437233 Question Type : MCQ Option Shuffling : Yes Display Question Number : Yes  
Single Line Question Option : No Option Orientation : Vertical

Correct : 1 Wrong : 0.25

Misha starts from her home and goes straight for 2 km. Then she turns right and goes for 3 km. Finally, she turns left and goes for 2 km to reach the mall. What is the shortest distance between Misha’s home and the mall?

Options :

✗ 4.5 km

✓ 5 km

✗ 6 km

✗ 3.5 km

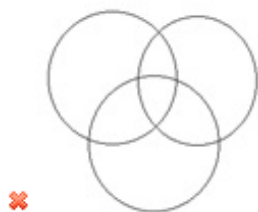
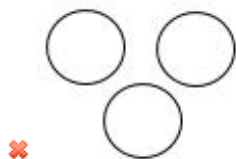
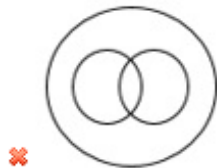
Question Number : 8 Question Id : 1679437234 Question Type : MCQ Option Shuffling : Yes Display Question Number : Yes  
Single Line Question Option : No Option Orientation : Vertical

Correct : 1 Wrong : 0.25

Select the diagram that best represents the relationship among the terms given below:

Lahore, Asia, Pakistan

Options :



Question Number : 9 Question Id : 1679437235 Question Type : MCQ Option Shuffling : Yes Display Question Number : Yes  
Single Line Question Option : No Option Orientation : Vertical

Correct : 1 Wrong : 0.25



Six friends, Aman, Bipin, Chhagan, Jagan, Magan, and Tapan, are sitting around a circular table facing one another, such that each friend is seated exactly opposite another friend. Aman does not sit next to Bipin or Tapan. Magan sits to Tapan's immediate right. Chhagan is sitting opposite Magan. Jagan is sitting to Aman's immediate right.

Between whom is Bipin sitting?

Options :

- ☒ Tapan and Chhagan
- ☐ Magan and Jagan
- ☐ Tapan and Jagan
- ☐ Chhagan and Aman

Question Number : 10 Question Id : 1679437236 Question Type : MCQ Option Shuffling : Yes Display Question Number : Yes  
Single Line Question Option : No Option Orientation : Vertical

Correct : 1 Wrong : 0.25

Six friends, Aman, Bipin, Chhagan, Jagan, Magan, and Tapan, are sitting around a circular table facing one another, such that each friend is seated exactly opposite another friend. Aman does not sit next to Bipin or Tapan. Magan sits to Tapan's immediate right. Chhagan is sitting opposite Magan. Jagan is sitting to Aman's immediate right.

Who is sitting exactly opposite Tapan?

Options :

- ☐ Magan
- ☒ Jagan
- ☐ Chhagan
- ☐ Aman

Question Number : 11 Question Id : 1679437237 Question Type : MCQ Option Shuffling : Yes Display Question Number : Yes  
Single Line Question Option : No Option Orientation : Vertical

Correct : 1 Wrong : 0.25

In a code language, FEDERAL is coded as GDEDSZM. How will GENETIC be coded in that language?

Options :

- ☒ HDODUHD
- ☐ FFMFSJB
- ☐ EDOFUHD
- ☐ HFODSJB

Question Number : 12 Question Id : 1679437238 Question Type : MCQ Option Shuffling : Yes Display Question Number : Yes  
Single Line Question Option : No Option Orientation : Vertical

Correct : 1 Wrong : 0.25

If '+' is replaced by 'S'; if '×' is replaced by '&'; '-' is replaced by '@'; and '+' is replaced by '#', find the value of the following equation.

$$217 \text{ S } 7 \text{ \& } 4 \text{ \# } 5 \text{ @ } 6$$

Options :

✓ 123

✗ 135

✗ 131

✗ 121

Question Number : 13 Question Id : 1679437239 Question Type : MCQ Option Shuffling : Yes Display Question Number : Yes  
Single Line Question Option : No Option Orientation : Vertical

Correct : 1 Wrong : 0.25

Six friends are riding horses. Visajirao rides faster than Dipajirao. Prataprao rides faster than Visajirao. Dipajirao rides faster than Hilal but slower than Vithalrao. Vithalrao does not ride as fast as Visajirao. Who among the following rides the fastest?

Options :

✓ Prataprao

✗ Visajirao

✗ Vithalrao

✗ Dipajirao

Question Number : 14 Question Id : 1679437240 Question Type : MCQ Option Shuffling : Yes Display Question Number : Yes  
Single Line Question Option : No Option Orientation : Vertical

Correct : 1 Wrong : 0.25

What will come in place of the blank in the series?

1, 3, 7, 15, 31, 63, \_\_\_\_\_

Options :

✗ 125

✗ 157

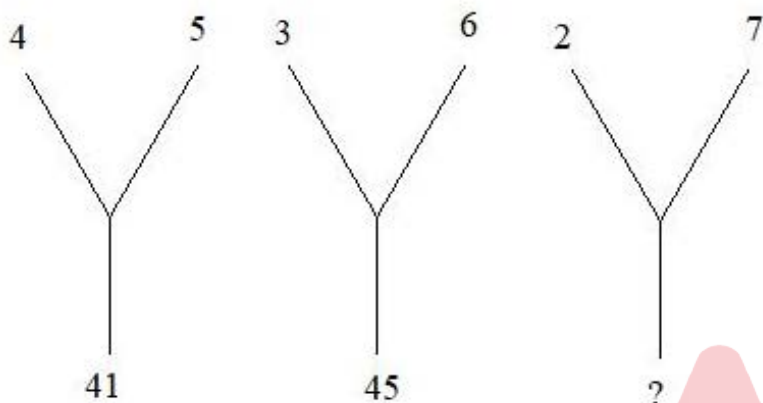
✗ 112

✓ 127

Question Number : 15 Question Id : 1679437241 Question Type : MCQ Option Shuffling : Yes Display Question Number : Yes  
Single Line Question Option : No Option Orientation : Vertical

Correct : 1 Wrong : 0.25

Select the option that will correctly replace the question mark (?) and complete the series.



Options :

✗ 51

✗ 56

✓ 53

✗ 67

Question Number : 16 Question Id : 1679437242 Question Type : MCQ Option Shuffling : Yes Display Question Number : Yes  
Single Line Question Option : No Option Orientation : Vertical

Correct : 1 Wrong : 0.25

In this question, two statements are given, which are followed by two conclusions numbered 1 and 2. Take the given statements to be true even if they seem to be at variance from commonly known facts. Read the conclusions and then decide which of the given conclusions logically follow(s) from the given statements, disregarding commonly known facts.

**Statements:**

All songs are stories.

Some stories are novels.

**Conclusions:**

1. All novels are stories.

2. Some stories are songs.

Options :

✗ Only conclusion 1 follows.

✓ Only conclusion 2 follows.

✗ Neither conclusion 1 nor conclusion 2 follows.



✗ Both conclusion 1 and conclusion 2 follow.

Question Number : 17 Question Id : 1679437243 Question Type : MCQ Option Shuffling : Yes Display Question Number : Yes  
Single Line Question Option : No Option Orientation : Vertical

Correct : 1 Wrong : 0.25

The statement below is followed by two arguments labelled I and II. Read the arguments in relation with the statement and identify the strong argument. Assume that all information in the given statements is true.

**Statement:** Children under the age of 12 years should not be allowed to use mobile phones.

**Argument I:** Mobile phones are expensive and all children cannot afford them.

**Argument II:** By using mobile phones, children under 12 years can get exposed to harmful radiation.

Options :

✗ Only argument I is strong.

✓ Only argument II is strong.

✗ Both arguments are strong.

✗ Neither argument I nor argument II is strong.

Question Number : 18 Question Id : 1679437244 Question Type : MCQ Option Shuffling : Yes Display Question Number : Yes  
Single Line Question Option : No Option Orientation : Vertical

Correct : 1 Wrong : 0.25

The statement below is followed by two conclusions labelled I and II. Assuming that the information in the statement is true, even if it appears at variance from generally established facts, decide which conclusion(s) logically and definitely follow(s) from the information given in the statement.

**Statement:** Only hard-working students have scored more than 60 per cent marks in the annual exam. Rishabh scored 66 per cent marks.

**Conclusion I:** Rishabh is very intelligent.

**Conclusion II:** Rishabh is a hard-working student.

Options :

✗ Only conclusion I follows.

✓ Only conclusion II follows.

✗ Both conclusions follow.

✗ Neither conclusion I nor conclusion II follows.

Question Number : 19 Question Id : 1679437245 Question Type : MCQ Option Shuffling : Yes Display Question Number : Yes  
Single Line Question Option : No Option Orientation : Vertical

Correct : 1 Wrong : 0.25

Study the following scenario (situation) and answer the question that follows.

You are playing cricket with your friends near your home. When you hit the ball with your bat, the ball hits and breaks the window pane of a neighbour. Select the option that describes the most appropriate action that you will take in this situation.

Options :

- ☐ Blame the bowler who had thrown a bouncer at you
- ☐ Ask the fielder to get the ball as he was responsible for stopping the ball
- ☐ Sneak into the neighbour’s house and get the ball quietly
- ☒ Apologise to the concerned neighbour and offer to clean the mess and replace the broken glass

Question Number : 20 Question Id : 1679437246 Question Type : MCQ Option Shuffling : Yes Display Question Number : Yes  
Single Line Question Option : No Option Orientation : Vertical  
Correct : 1 Wrong : 0.25

In this question, two statements labelled I and II are given. Read both the statements and decide which option correctly shows the relationship between these given statements.

**Statement I:** The government has banned fishing in the lake.  
**Statement II:** High amount of hazardous toxins were found in the lake water.

Options :

- ☐ Statement I is the cause and statement II is its effect.
- ☒ Statement II is the cause and statement I is its effect.
- ☐ Both the statements I and II are independent causes.
- ☐ Both the statements I and II are effects of independent causes.

General Awareness

Group Number :	2
Group Id :	167943148
Group Maximum Duration :	0
Group Minimum Duration :	0
Revisit allowed for view? :	No
Revisit allowed for edit? :	No
Break time:	0
Group Marks:	20

General Awareness

Section Id :	167943207
Section Number :	1

Section type :	Online
Mandatory or Optional:	Mandatory
Number of Questions:	20
Number of Questions to be attempted:	20
Section Marks:	20
Display Number Panel:	Yes
Group All Questions:	No

Sub-Section Number:	1
Sub-Section Id:	167943419
Question Shuffling Allowed :	Yes

Question Number : 21 Question Id : 1679437247 Question Type : MCQ Option Shuffling : Yes Display Question Number : Yes  
Single Line Question Option : No Option Orientation : Vertical  
Correct : 1 Wrong : 0.25

Who was the last Viceroy and the first Governor General of independent India?

Options :

- ✗ Lord Curzon
- ✗ Lord Wavell
- ✗ Lord Reading
- ✓ Lord Mountbatten

Question Number : 22 Question Id : 1679437248 Question Type : MCQ Option Shuffling : Yes Display Question Number : Yes  
Single Line Question Option : No Option Orientation : Vertical  
Correct : 1 Wrong : 0.25

The Indian Councils Act of 1909 is also known as the:

Options :

- ✗ the Regulating Act
- ✗ the Pitts India Act
- ✗ the Indian Independence Act
- ✓ the Morley-Minto Reforms

Question Number : 23 Question Id : 1679437249 Question Type : MCQ Option Shuffling : Yes Display Question Number : Yes  
Single Line Question Option : No Option Orientation : Vertical  
Correct : 1 Wrong : 0.25

Who among the following national leaders attended the second Round Table Conference on behalf of the Indian National Congress in 1931?

Options :



✓ Mahatma Gandhi

✗ Jawahar Lal Nehru

✗ Sardar Patel

✗ Maulana Abul Kalam Azad

Question Number : 24 Question Id : 1679437250 Question Type : MCQ Option Shuffling : Yes Display Question Number : Yes  
Single Line Question Option : No Option Orientation : Vertical

Correct : 1 Wrong : 0.25

What is the total length of India's coastline?

Options :

✗ 5517 km

✗ 6517 km

✓ 7517 km

✗ 8517 km

Question Number : 25 Question Id : 1679437251 Question Type : MCQ Option Shuffling : Yes Display Question Number : Yes  
Single Line Question Option : No Option Orientation : Vertical

Correct : 1 Wrong : 0.25

Which of the following rivers ends in the Arabian Sea?

Options :

✗ Ganga

✗ Brahmaputra

✗ Kaveri

✓ Narmada

Question Number : 26 Question Id : 1679437252 Question Type : MCQ Option Shuffling : Yes Display Question Number : Yes  
Single Line Question Option : No Option Orientation : Vertical

Correct : 1 Wrong : 0.25

Fundamental Duties (under Article 51A) were added to the Constitution by the \_\_\_\_\_ Amendment of the Constitution.

Options :

✗ 7<sup>th</sup>

✓ 42<sup>nd</sup>

✗ 11<sup>th</sup>

✗ 44<sup>th</sup>

Question Number : 27 Question Id : 1679437253 Question Type : MCQ Option Shuffling : Yes Display Question Number : Yes  
Single Line Question Option : No Option Orientation : Vertical

Correct : 1 Wrong : 0.25

\_\_\_\_\_ provides provisions in case of failure of constitutional machinery in States.

Options :

✗ Article 350

✓ Article 356

✗ Article 333

✗ Article 351

Question Number : 28 Question Id : 1679437254 Question Type : MCQ Option Shuffling : Yes Display Question Number : Yes  
Single Line Question Option : No Option Orientation : Vertical

Correct : 1 Wrong : 0.25

Who was the First Speaker of the First Lok Sabha?

Options :

✗ Sardar Hukam Singh

✗ Gurdial Singh

✓ Ganesh Vasudev Mavalankar

✗ Bali Ram Bhagat

Question Number : 29 Question Id : 1679437255 Question Type : MCQ Option Shuffling : Yes Display Question Number : Yes  
Single Line Question Option : No Option Orientation : Vertical

Correct : 1 Wrong : 0.25

Minimum Support Prices are decided by:

Options :

✗ Fiscal Prudence Commission

✗ NITI Aayog



✓ Cabinet Committee on Economic Affairs

✗ Ministry of Finance

Question Number : 30 Question Id : 1679437256 Question Type : MCQ Option Shuffling : Yes Display Question Number : Yes  
Single Line Question Option : No Option Orientation : Vertical

Correct : 1 Wrong : 0.25

Who among the following is the Vice Chairperson of NITI Aayog as on June 2018?

Options :

✓ Rajiv Kumar

✗ Ramesh Chand

✗ VK Paul

✗ Amitabh Kant

Question Number : 31 Question Id : 1679437257 Question Type : MCQ Option Shuffling : Yes Display Question Number : Yes  
Single Line Question Option : No Option Orientation : Vertical

Correct : 1 Wrong : 0.25

In which state is the Onam festival primarily celebrated?

Options :

✗ Telangana

✓ Kerala

✗ Tamil Nadu

✗ Karnataka

Question Number : 32 Question Id : 1679437258 Question Type : MCQ Option Shuffling : Yes Display Question Number : Yes  
Single Line Question Option : No Option Orientation : Vertical

Correct : 1 Wrong : 0.25

The noted dancer Ranjana Gauhar is an exponent of which of the following dance styles?

Options :

✗ Kuchipudi

✗ Kathak

✗ Bharatnatyam

✓ Odissi

Question Number : 33 Question Id : 1679437259 Question Type : MCQ Option Shuffling : Yes Display Question Number : Yes  
Single Line Question Option : No Option Orientation : Vertical

Correct : 1 Wrong : 0.25

The paintings and sculptures of Ajanta Caves in Maharashtra are related to which of the following religions?

Options :

✗ Hinduism

✓ Buddhism

✗ Jainism

✗ Zoroastrianism

Question Number : 34 Question Id : 1679437260 Question Type : MCQ Option Shuffling : Yes Display Question Number : Yes  
Single Line Question Option : No Option Orientation : Vertical

Correct : 1 Wrong : 0.25

What is the highest ever medal tally achieved by India at Commonwealth Games?

Options :

✗ 94

✗ 126

✗ 83

✓ 101

Question Number : 35 Question Id : 1679437261 Question Type : MCQ Option Shuffling : Yes Display Question Number : Yes  
Single Line Question Option : No Option Orientation : Vertical

Correct : 1 Wrong : 0.25

How many Olympic Medals has India won in the sport of Wrestling as on June 2018?

Options :

✓ 5

✗ 7

✗ 3

✗ 2

Question Number : 36 Question Id : 1679437262 Question Type : MCQ Option Shuffling : Yes Display Question Number : Yes  
Single Line Question Option : No Option Orientation : Vertical

Correct : 1 Wrong : 0.25

Which of the following works as the best fire extinguisher?

Options :

✘  $O_2$

✘  $SO_2$

✔  $CO_2$

✘ CO

Question Number : 37 Question Id : 1679437263 Question Type : MCQ Option Shuffling : Yes Display Question Number : Yes  
Single Line Question Option : No Option Orientation : Vertical

Correct : 1 Wrong : 0.25

What is the number of members in UNESCO as on June 2018?

Options :

✘ 163

✔ 195

✘ 112

✘ 67

Question Number : 38 Question Id : 1679437264 Question Type : MCQ Option Shuffling : Yes Display Question Number : Yes  
Single Line Question Option : No Option Orientation : Vertical

Correct : 1 Wrong : 0.25

What was the Crude Oil growth rate of India in March 2018?

Options :

✘ -3.8%

✘ -2.3%

✔ -1.6%

✘ -0.7%

Question Number : 39 Question Id : 1679437265 Question Type : MCQ Option Shuffling : Yes Display Question Number : Yes  
Single Line Question Option : No Option Orientation : Vertical

Correct : 1 Wrong : 0.25

Which among the following has become India's first \$100 billion market capitalisation IT company?

Options :

✔ TCS

✖ Accenture

✖ Wipro

✖ Satyam

Question Number : 40 Question Id : 1679437266 Question Type : MCQ Option Shuffling : Yes Display Question Number : Yes  
Single Line Question Option : No Option Orientation : Vertical

Correct : 1 Wrong : 0.25

Which among the following Indian cities has NOT figured in the list of world’s 20 most polluted cities in terms of particulate matter PM2.5 levels?

Options :

✖ Patna

✔ Chandigarh

✖ Agra

✖ Gurgaon

Group Number :	3
Group Id :	167943149
Group Maximum Duration :	0
Group Minimum Duration :	0
Revisit allowed for view? :	No
Revisit allowed for edit? :	No
Break time:	0
Group Marks:	20

Arithmetic Ability

Section Id :	167943208
Section Number :	1
Section type :	Online
Mandatory or Optional:	Mandatory
Number of Questions:	17
Number of Questions to be attempted:	17
Section Marks:	20
Display Number Panel:	Yes
Group All Questions:	No

Arithmetic Ability

Sub-Section Id: 167943420  
Question Shuffling Allowed : Yes

Question Number : 41 Question Id : 1679437267 Question Type : MCQ Option Shuffling : Yes Display Question Number : Yes  
Single Line Question Option : No Option Orientation : Vertical

Correct : 1 Wrong : 0.25

Let  $x$  and  $y$  be the largest four-digit and the smallest five-digit numbers, respectively, that when divided by 789 leaves a remainder of 7 in each case. What is the value of  $|x - y|$ ?

Options :

✗ 678

✓ 789

✗ 786

✗ 798

Question Number : 42 Question Id : 1679437268 Question Type : MCQ Option Shuffling : Yes Display Question Number : Yes  
Single Line Question Option : No Option Orientation : Vertical

Correct : 1 Wrong : 0.25

The value of  $\frac{(1.01)^3 + 0.000001}{1.0201 - (0.01)^2} \times \frac{(7.85)^2 - 4.6225}{7.85 - 2.15}$  is:

Options :

✓ 10.101

✗ 0.00101

✗ 0.0101

✗ 1.01

Question Number : 43 Question Id : 1679437269 Question Type : MCQ Option Shuffling : Yes Display Question Number : Yes  
Single Line Question Option : No Option Orientation : Vertical

Correct : 1 Wrong : 0.25

On simplification,  $\frac{(625)^{6.25} \times (\sqrt{5})^{10.4}}{(\sqrt{5})^{54} \times (5)^{1.2} \times (25)^{0.5}}$  reduces to:

Options :

✗  $\sqrt{5}$

✓ 5

✗  $5\sqrt{5}$

✗ 25



Question Number : 44 Question Id : 1679437270 Question Type : MCQ Option Shuffling : Yes Display Question Number : Yes  
Single Line Question Option : No Option Orientation : Vertical  
Correct : 1 Wrong : 0.25

The value of  $\frac{5}{7}$  of  $\left[ \frac{1}{\frac{1}{3}} + \frac{6}{5} \text{ of } \frac{3\frac{1}{3} - 2\frac{1}{2}}{2\frac{5}{21} - 2} \right] + \left[ \frac{7}{5 - 2\frac{2}{3}} \div \frac{3 - \frac{2}{3 - 1\frac{1}{2}}}{4 - 1\frac{1}{2}} \right]$  is:

Options :

✗ 2

✗ 4

✓ 8

✗ 16

Question Number : 45 Question Id : 1679437271 Question Type : MCQ Option Shuffling : Yes Display Question Number : Yes  
Single Line Question Option : No Option Orientation : Vertical  
Correct : 1 Wrong : 0.25

In a school, the ages of  $\frac{1}{5}$  of the total number of students is less than 10 years. 60 girls are more than 10 years of age and this number is equal to  $\frac{3}{2}$  of the number of boys who are more than 10 years of age. What is  $\frac{3}{5}$  of the total number of students?

Options :

✗ 54

✓ 75

✗ 72

✗ 60

Question Number : 46 Question Id : 1679437272 Question Type : MCQ Option Shuffling : Yes Display Question Number : Yes  
Single Line Question Option : No Option Orientation : Vertical  
Correct : 1 Wrong : 0.25

The ratio of the incomes of A, B and C last year was 3 : 5 : 7. The ratios of their individual incomes last year to that this year are 2 : 3, 3 : 4 and 4 : 5, respectively. If their total present income is ₹ 83,650, then what is the present income of C?

Options :

✗ ₹ 12,600

✗ ₹ 28,000

✗ ₹ 32,640

✓ ₹ 36,750

Question Number : 47 Question Id : 1679437273 Question Type : MCQ Option Shuffling : Yes Display Question Number : Yes  
Single Line Question Option : No Option Orientation : Vertical

Correct : 1 Wrong : 0.25

The number of boys is 50% more than the number of girls in a school. If 20% of the number of boys and 30% of the number of girls are scholarship holders, then the percentage of students who are NOT scholarship holders is:

Options :

✗ 78

✓ 76

✗ 75

✗ 72

Question Number : 48 Question Id : 1679437274 Question Type : MCQ Option Shuffling : Yes Display Question Number : Yes  
Single Line Question Option : No Option Orientation : Vertical

Correct : 1 Wrong : 0.25

The marked price of an article is ₹1,600. A retailer buys it after getting two successive discounts for ₹1,080. The first discount is 25%. If the retailer sells the article by allowing a single discount that is 150% of the second discount on the marked price. The percentage of profit is approximately:

Options :

✗ 22

✗ 24

✓ 26

✗ 30

Question Number : 49 Question Id : 1679437275 Question Type : MCQ Option Shuffling : Yes Display Question Number : Yes  
Single Line Question Option : No Option Orientation : Vertical

Correct : 1 Wrong : 0.25

A sum amounts to ₹9,680 in 2 years and ₹10,648 in 3 years at a certain rate per annum, interest compounded yearly. The same sum will amount to how much after  $3\frac{3}{4}$  years at double the rate of interest (nearest to a whole number)?

Options :

✗ ₹15,988

✓ ₹15,898

✗ ₹15,889

✖ ₹15,989

Question Number : 50 Question Id : 1679437276 Question Type : MCQ Option Shuffling : Yes Display Question Number : Yes  
Single Line Question Option : No Option Orientation : Vertical

Correct : 1 Wrong : 0.25

Water flows at a rate of 5 km/h through a pipe of radius 7 cm into a rectangular tank of length 100 m and breadth 88 m. The time (in hours) in which the level of water in the tank will rise by 14 cm is (take  $\pi = 22/7$ ):

Options :

✔ 16

✖ 15

✖ 12

✖ 10

Question Number : 51 Question Id : 1679437277 Question Type : MCQ Option Shuffling : Yes Display Question Number : Yes  
Single Line Question Option : No Option Orientation : Vertical

Correct : 1 Wrong : 0.25

The HCF of two numbers is 18 and their product is 5832. If the numbers lie between 30 and 200, then the sum of their reciprocals is:

Options :

✔  $\frac{11}{162}$

✔  $\frac{11}{324}$

✖  $\frac{7}{162}$

✖  $\frac{7}{324}$

Question Number : 52 Question Id : 1679437278 Question Type : MCQ Option Shuffling : Yes Display Question Number : Yes  
Single Line Question Option : No Option Orientation : Vertical

Correct : 1 Wrong : 0.25

Let  $x$  be the least number that when divided by 16, 28, 40 and 77 leaves a remainder of 7 in each case, but is divisible by 19. What will be the remainder when  $x$  is divided by 219?

Options :

✖ 19

✖ 37

✖ 69

✔ 91

Question Number : 53 Question Id : 1679437279 Question Type : MCQ Option Shuffling : Yes Display Question Number : Yes  
Single Line Question Option : No Option Orientation : Vertical

Correct : 1 Wrong : 0.25

A boat takes 3 hours more to travel a distance of 30 km upstream than it takes to travel the same distance downstream. If the speed of the boat in still water is three times the speed of the stream, then how much time will it take to travel a distance of 180 km in still water?

Options :

✖ 20 hours

✖ 18 hours

✔ 24 hours

✖ 25 hours

Question Number : 54 Question Id : 1679437280 Question Type : MCQ Option Shuffling : Yes Display Question Number : Yes  
Single Line Question Option : No Option Orientation : Vertical

Correct : 1 Wrong : 0.25

A can complete a task in 6 more days than what B takes to complete the same task. B starts the task and works for 4 days. Then, A alone completes it in 12 days. The time taken (in days) by B alone to complete the same task will be:

Options :

✖ 10

✔ 12

✖ 15

✖ 16

Sub-Section Number: 2  
Sub-Section Id: 167943421  
Question Shuffling Allowed : Yes

Question Id : 1679437281 Question Type : COMPREHENSION Sub Question Shuffling Allowed : Yes Group Comprehension Questions : No

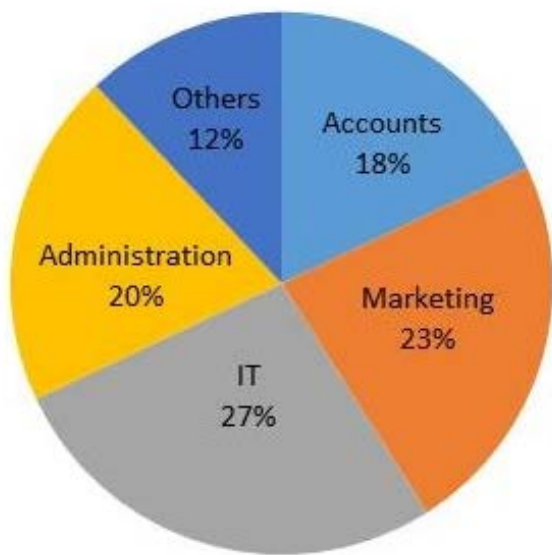
Question Numbers : (55 to 56)

Question Label : Comprehension



Study the following pie-chart and table and answer the questions that follow:

Distribution of employees in different departments of a company  
Total number of employees = 3000



Male and Female Ratio	
Department	Male : Female
Accounts	11 : 7
Marketing	12 : 11
IT	14 : 13
Administration	3 : 2
others	4 : 5

Sub questions

Question Number : 55 Question Id : 1679437282 Question Type : MCQ Option Shuffling : Yes Display Question Number : Yes  
Single Line Question Option : No Option Orientation : Vertical  
Correct : 1 Wrong : 0.25

What is the ratio of the total number of male employees working in Accounts and IT to that of female employees working in Marketing and Administration?

- Options :
- ✗ 25 : 13
  - ✓ 25 : 19
  - ✗ 23 : 18
  - ✗ 17 : 15

Question Number : 56 Question Id : 1679437283 Question Type : MCQ Option Shuffling : Yes Display Question Number : Yes  
Single Line Question Option : No Option Orientation : Vertical  
Correct : 1 Wrong : 0.25

If the total number of male employees in the company is  $x\%$  more than the total number of female employees, then the value of  $x$  (nearest to an integer) is:

- Options :
- ✗ 17



✖ 18

✔ 19

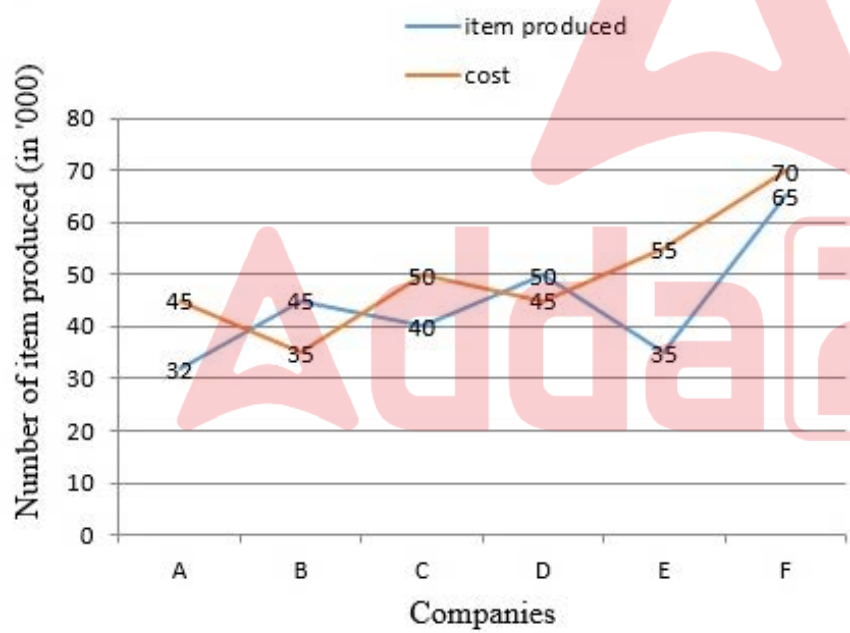
✖ 20

Sub-Section Number: 3  
Sub-Section Id: 167943422  
Question Shuffling Allowed : Yes

Question Id : 1679437284 Question Type : COMPREHENSION Sub Question Shuffling Allowed : Yes Group Comprehension Questions : No  
Question Numbers : (57 to 58)  
Question Label : Comprehension

Study the following graph and answer the questions that follow:

Number of items produced (in thousands) and cost (in ₹) per hundred items in six companies.



Sub questions

Question Number : 57 Question Id : 1679437285 Question Type : MCQ Option Shuffling : Yes Display Question Number : Yes  
Single Line Question Option : No Option Orientation : Vertical  
Correct : 1 Wrong : 0.25

What is the total cost of the items produced by companies A, C and E together?

Options :

✖ ₹ 52,250

✖ ₹ 52,450

✓ ₹ 53,650

✗ ₹ 53,560

Question Number : 58 Question Id : 1679437286 Question Type : MCQ Option Shuffling : Yes Display Question Number : Yes  
Single Line Question Option : No Option Orientation : Vertical

Correct : 1 Wrong : 0.25

If the number of items produced by company D increases by 40% and the number of items produced by company F decreases by 40%. What will be the total cost of items produced by the two companies?

Options :

✗ ₹ 56,400

✗ ₹ 56,600

✗ ₹ 58,400

✓ ₹ 58,800

Sub-Section Number: 4  
Sub-Section Id: 167943423  
Question Shuffling Allowed : Yes

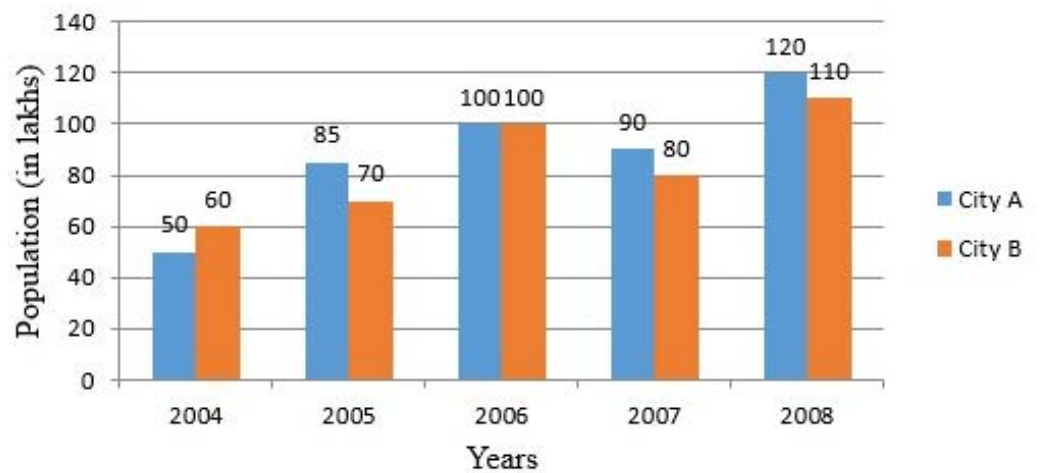
Question Id : 1679437287 Question Type : COMPREHENSION Sub Question Shuffling Allowed : Yes Group Comprehension Questions : No

Question Numbers : (59 to 60)

Question Label : Comprehension

Study the following bar graph which shows the population of two cities A and B over the years and answer the questions that follow:

Population (in lakhs) of cities A and B over the years



Sub questions

Question Number : 59 Question Id : 1679437288 Question Type : MCQ Option Shuffling : Yes Display Question Number : Yes  
Single Line Question Option : No Option Orientation : Vertical

Correct : 1 Wrong : 0.25

For which city and in which year was the per cent rise in population from the previous year the highest?

Options :

- ✗ City B - 2008
- ✓ City A - 2005
- ✗ City A - 2008
- ✗ City B - 2006

Question Number : 60 Question Id : 1679437289 Question Type : MCQ Option Shuffling : Yes Display Question Number : Yes  
Single Line Question Option : No Option Orientation : Vertical

Correct : 1 Wrong : 0.25

Population of city A in 2004, 2006 and 2008 together is what per cent more than the population of city B in 2005 and 2007 together?

Options :

- ✗ 44.4%
- ✗ 48.8%
- ✗ 75%

✔ 80%

General English

Group Number :	4
Group Id :	167943150
Group Maximum Duration :	0
Group Minimum Duration :	0
Revisit allowed for view? :	No
Revisit allowed for edit? :	No
Break time:	0
Group Marks:	20

General English

Section Id :	167943209
Section Number :	1
Section type :	Online
Mandatory or Optional:	Mandatory
Number of Questions:	16
Number of Questions to be attempted:	16
Section Marks:	20
Display Number Panel:	Yes
Group All Questions:	No

Sub-Section Number:	1
Sub-Section Id:	167943424
Question Shuffling Allowed :	Yes

Question Number : 61 Question Id : 1679437290 Question Type : MCQ Option Shuffling : Yes Display Question Number : Yes  
Single Line Question Option : No Option Orientation : Vertical  
Correct : 1 Wrong : 0.25

Choose the correct SYNONYM of:

SURPRISE

Options :

✘ Excitement

✘ Relief

✔ Amazement

✘ Expectation

Question Number : 62 Question Id : 1679437291 Question Type : MCQ Option Shuffling : Yes Display Question Number : Yes  
Single Line Question Option : No Option Orientation : Vertical

Correct : 1 Wrong : 0.25

Choose the correct ANTONYM of:

HAUGHTY

Options :

✗ Arrogant

✗ Disobedient

✓ Humble

✗ Disturbing

Question Number : 63 Question Id : 1679437292 Question Type : MCQ Option Shuffling : Yes Display Question Number : Yes  
Single Line Question Option : No Option Orientation : Vertical

Correct : 1 Wrong : 0.25

Choose the correct ANTONYM of the underlined word to fill in the blank.

Though the lion appeared to be gentle, it turned out that it was quite \_\_\_\_\_ and snarled at the visitors.

Options :

✗ timid

✗ innocent

✗ depressed

✓ ferocious

Question Number : 64 Question Id : 1679437293 Question Type : MCQ Option Shuffling : Yes Display Question Number : Yes  
Single Line Question Option : No Option Orientation : Vertical

Correct : 1 Wrong : 0.25

Choose the correct word to fill in the blank.

My car is giving me good mileage. It gives me 20 kilometres \_\_\_\_\_ litre.

Options :

✗ the

✓ a

✗ any

✗ some



Question Number : 65 Question Id : 1679437294 Question Type : MCQ Option Shuffling : Yes Display Question Number : Yes  
Single Line Question Option : No Option Orientation : Vertical

Correct : 1 Wrong : 0.25

Fill in the blank with the appropriate word (s).

I \_\_\_\_\_ my birthday on Saturday at my house. Please do come at 7 pm.

Options :

✗ celebrated

✓ am celebrating

✗ was celebrating

✗ celebrates

Question Number : 66 Question Id : 1679437295 Question Type : MCQ Option Shuffling : Yes Display Question Number : Yes  
Single Line Question Option : No Option Orientation : Vertical

Correct : 1 Wrong : 0.25

Fill in the blank with the appropriate word.

My friend is quite ill. I visit her \_\_\_\_\_ in the hospital.

Options :

✓ daily

✗ completely

✗ usually

✗ hardly

Question Number : 67 Question Id : 1679437296 Question Type : MCQ Option Shuffling : Yes Display Question Number : Yes  
Single Line Question Option : No Option Orientation : Vertical

Correct : 1 Wrong : 0.25

In the following sentences, four words or phrases have been underlined. One of them is incorrect. Choose the INCORRECT word or phrase from the given options.

The maintenance of the parks and gardens has been entrusted to a private agency that has promised to do a professional job. We do hope the parks are now be maintained well.

Options :

✗ has been entrusted

✗ has promised

✗ do hope

✓ are now be maintained

Question Number : 68 Question Id : 1679437297 Question Type : MCQ Option Shuffling : Yes Display Question Number : Yes  
Single Line Question Option : No Option Orientation : Vertical

Correct : 1 Wrong : 0.25

In the following sentences, four words or phrases have been underlined. One of them is incorrect. Choose the INCORRECT word or phrase from the given options.

The tsunami hit the coastal towns with such ferocity that each and all dwelling was destroyed. Many precious lives were lost too.

Options :

✗ hit the coastal towns

✓ each and all dwelling

✗ was destroyed.

✗ lives were lost

Question Number : 69 Question Id : 1679437298 Question Type : MCQ Option Shuffling : Yes Display Question Number : Yes  
Single Line Question Option : No Option Orientation : Vertical

Correct : 1 Wrong : 0.25

Choose the PASSIVE VOICE form of the given sentence.

The audience enjoyed the opening song of the show and cheered loudly when it finished.

Options :

✗ The audience was finding the opening song enjoyable during the show and cheered loudly when it finished.

✗ The audience enjoyed the opening song of the show and when it finished they were cheering loudly.

✓ The opening song of the show was enjoyed by the audience and they cheered loudly when it finished.

✗ The audience is finding the opening song during the show enjoyable and so they cheered loudly when it finished.

Question Number : 70 Question Id : 1679437299 Question Type : MCQ Option Shuffling : Yes Display Question Number : Yes  
Single Line Question Option : No Option Orientation : Vertical

Correct : 1 Wrong : 0.25

Choose the most appropriate INDIRECT SPEECH for the following sentence.

Mother said to Ravi, "You must return home before it gets dark. Don't get late!"

Options :

- ✗ Mother requested Ravi that he should return home before dark and warns him not to get late.
- ✓ Mother reminded Ravi to return home before it got dark and warned him not to get late.
- ✗ Ravi told mother that he must return home before it got dark and would not get late.
- ✗ Mother was reminding Ravi that he must return home before it got late and warned him to reach before it got dark.

Question Number : 71 Question Id : 1679437300 Question Type : MCQ Option Shuffling : Yes Display Question Number : Yes  
Single Line Question Option : No Option Orientation : Vertical  
Correct : 1 Wrong : 0.25

Choose the best option to combine the given sentences.

I won the book, The Diary of Anne Frank at the competition. The book is very dear to me.

Options :

- ✓ The book, The Diary of Anne Frank that I won at the competition, is very dear to me.
- ✗ The book which is The Diary of Anne Frank won at the competition is very dear to me.
- ✗ The book is very dear to me, The Diary of Anne Frank, which I won at the competition.
- ✗ I won the book The Diary of Anne Frank at a competition however it is very dear to me.

Question Number : 72 Question Id : 1679437301 Question Type : MCQ Option Shuffling : Yes Display Question Number : Yes  
Single Line Question Option : No Option Orientation : Vertical  
Correct : 1 Wrong : 0.25

Choose the passage that is correctly punctuated.

Options :

- ✗ She took a quick bath. sipped a cup of hot coffee; made a few important calls; and sat down for a conference call with Ashish.
- ✗ She took a quick bath sipped a cup of hot coffee. made a few important calls and sat down for a conference call with ashish.
- ✓ She took a quick bath, sipped a cup of hot coffee, made a few important calls and sat down for a conference call with Ashish.
- ✗ she took a quick bath sipped a cup of hot coffee made a few important calls and sat down. For a conference call with Ashish.

Question Number : 73 Question Id : 1679437302 Question Type : MCQ Option Shuffling : Yes Display Question Number : Yes  
Single Line Question Option : No Option Orientation : Vertical  
Correct : 1 Wrong : 0.25

Choose the word that is correctly spelt.

Options :

- ✗ Forein



✓ Preference

✗ Deppressed

✗ Boundry

Question Number : 74 Question Id : 1679437303 Question Type : MCQ Option Shuffling : Yes Display Question Number : Yes  
Single Line Question Option : No Option Orientation : Vertical

Correct : 1 Wrong : 0.25

Fill in the blank with the appropriate phrasal verb.

It is now becoming more and more difficult for black money hoarders to \_\_\_\_\_ income tax evasion.

Options :

✗ get off with

✗ get through

✗ get on with

✓ get away with

Question Number : 75 Question Id : 1679437304 Question Type : MCQ Option Shuffling : Yes Display Question Number : Yes  
Single Line Question Option : No Option Orientation : Vertical

Correct : 1 Wrong : 0.25

Fill in the blank with the appropriate idiom.

I told Asha to be humble and not \_\_\_\_\_, as her superiors would surely recognise her skills.

Options :

✗ to call a spade a spade

✗ blow hot and cold

✗ cut a sorry figure

✓ to blow her own trumpet

Sub-Section Number:

2

Sub-Section Id:

167943425

Question Shuffling Allowed :

Yes



Question Id : 1679437305 Question Type : COMPREHENSION Sub Question Shuffling Allowed : Yes Group Comprehension Questions : No

Question Numbers : (76 to 80)

Question Label : Comprehension

Read the following passage and answer the questions that follow.

T'ai chi is a Chinese martial art and a form of stylised, meditative exercise consisting of slow circular and stretching movements and positions of bodily balance.

When a lot of people got sick owing to population explosion and lack of sufficient medical care, in 1956, during the communist revolution, top t'ai chi practitioners in China got together and came up with a short programme of teaching t'ai chi at a national level. The healthy practice of ending the day with some t'ai chi instead of remaining glued to the TV set or mobile phone would not only melt away the aches and pains acquired during the day but also induce a truly restful sleep.

T'ai chi's social benefits are well documented. The technique – Push Hands, where two people pair off — one uses his hands to push the partner, and the partner yields and neutralises the first and maintains his equilibrium — has been shown to have psychological value. It has tremendous healing effect on those suffering from loneliness.

All moves in t'ai chi involve bending and stretching. It starts with opening and closing in the joints. The joints get smaller while closing and expand while opening. At the physical level, this raises the practitioner's vitality. T'ai chi unites the mind, body and heart exponentially.

According to t'ai chi classics, the lower dantian — the area between the navel and the pubic bone — is the energetic centre that affects every action you make. It is the body's main switch box. A part of your mind should always remain present in your lower dantian. If everything comes from your lower dantian, it floods all the energy channels of your body evenly and balances them. The increased energy in the lower dantian increases your sense of physicality in everything you do, be it health, power, strength or focus.

Sub questions

Question Number : 76 Question Id : 1679437306 Question Type : MCQ Option Shuffling : Yes Display Question Number : Yes Single Line Question Option : No Option Orientation : Vertical

Correct : 1 Wrong : 0.25

Choose the most appropriate option to complete the sentence.

T'ai chi was started \_\_\_\_\_.

Options :

✗ by a communist movement or revolution

- ✗ owing to population explosion
- ✓ because of the need for medical care
- ✗ because people were getting very slow in their life

Question Number : 77 Question Id : 1679437307 Question Type : MCQ Option Shuffling : Yes Display Question Number : Yes  
Single Line Question Option : No Option Orientation : Vertical

Correct : 1 Wrong : 0.25

Choose the option that answers the question given below.

Which of the following is NOT an advantage of doing t'ai chi?

Options :

- ✓ One remains attached to the mobile phone.
- ✗ It gives bodily balance.
- ✗ People get together.
- ✗ It helps you get rid of pains.

Question Number : 78 Question Id : 1679437308 Question Type : MCQ Option Shuffling : Yes Display Question Number : Yes  
Single Line Question Option : No Option Orientation : Vertical

Correct : 1 Wrong : 0.25

Choose the option that answers the question given below.

“It has been shown to have psychological value.”  
What is the psychological value of practicing t'ai chi?

Options :

- ✗ People feel happy at being alive.
- ✓ It helps those who are feeling alone.
- ✗ The joints contract and expand.
- ✗ It maintains body balance.

Question Number : 79 Question Id : 1679437309 Question Type : MCQ Option Shuffling : Yes Display Question Number : Yes  
Single Line Question Option : No Option Orientation : Vertical  
Correct : 1 Wrong : 0.25

Choose the option that completes the sentence given below.

The greatest benefit of t'ai chi is that it \_\_\_\_\_.

Options :

- ☐ raises energy levels
- ☐ makes the joints smaller
- ☒ increases the unity of mind, body and soul
- ☐ creates social interaction

Question Number : 80 Question Id : 1679437310 Question Type : MCQ Option Shuffling : Yes Display Question Number : Yes  
Single Line Question Option : No Option Orientation : Vertical  
Correct : 1 Wrong : 0.25

Choose the option that completes the sentence given below.

The effect of the mind focussing on lower dantian is that \_\_\_\_\_.

Options :

- ☐ you become stronger in the lower part
- ☐ it makes you healthy
- ☐ it gives you power and focus
- ☒ there is a flow of energy in the whole body

General Hindi

Group Number :	5
Group Id :	167943151
Group Maximum Duration :	0
Group Minimum Duration :	0
Revisit allowed for view? :	No
Revisit allowed for edit? :	No
Break time:	0
Group Marks:	20

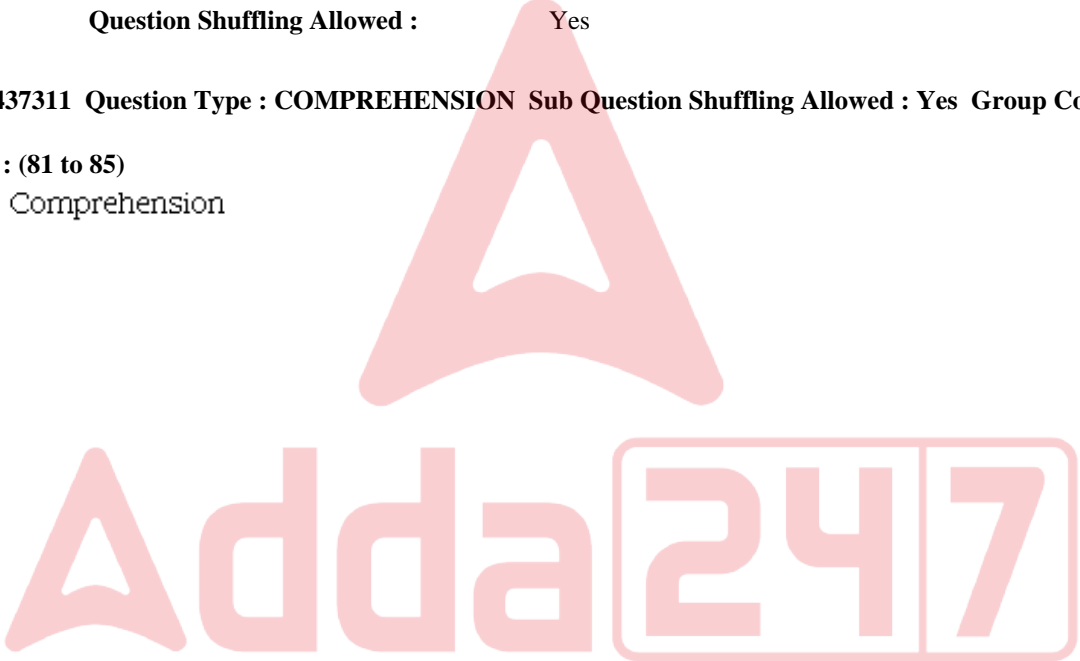


General Hindi

Section Id :	167943210
Section Number :	1
Section type :	Online
Mandatory or Optional:	Mandatory
Number of Questions:	16
Number of Questions to be attempted:	16
Section Marks:	20
Display Number Panel:	Yes
Group All Questions:	No

Sub-Section Number:	1
Sub-Section Id:	167943426
Question Shuffling Allowed :	Yes

Question Id : 1679437311 Question Type : COMPREHENSION Sub Question Shuffling Allowed : Yes Group Comprehension Questions : No  
Question Numbers : (81 to 85)  
Question Label : Comprehension





निम्नलिखित गद्यांश को पढ़कर पूछे गए प्रश्नों के उत्तर लिखिए।

परिश्रम का वही कमाल है। इतिहास में यह कमाल बार बार भिन्न भिन्न रूपों में देखा है। चन्द्रगुप्त हो या चाणक्य; सिकंदर हो या नेपोलियन; डिजरायली हो या लिंकन; सतलिज हो या खुशचेन; शंकराचार्य हो या खण्डन मिश्र; नेहरू हो या लालबहादुर शास्त्री सभी का जीवन परिश्रम और अध्यवसाय की रोमांचक कथा है। तालियों की गड़गड़ाहट के बीच वे संकुचित होकर बैठ गए। पर उन्होंने हिम्मत नहीं हारी। एकांत जंगल में, झाड़ियों और पेड़ों के सामने वे बोलने का अभ्यास करते रहे। पुरे एक वर्ष बाद जब ये फिर से ब्रिटिश संसद में बोलने खड़े हुए तो उनके धरा-प्रवाह भाषण से सांसदों की साँस रुक गई। वर्षों से उन्होंने ऐसा ओजस्वी और प्रभावपूर्ण भाषण नहीं सुना था। वह चमत्कार परिश्रम का ही परिणाम था।

कहते हैं महान कार-निर्माता उद्योगपति 'फोर्ड' एक साधारण टेक्नीशियन थे, खुशचेन खान मजदूर थे, टाटा, बिरला, मोदी आदि हमारे भारतीय उद्योगपति भी आरंभ में सामान्य-साधारण थे, किंतु निरंतर अटूट परिश्रम ने उन्हें सफलता और सम्पन्नता के आकाश पर चढ़ दिया। कहने का तात्पर्य यह है कि जहाँ-जहाँ, जिस जिस क्षेत्र में भी आप सफलता और उत्कर्ष के चमत्कार पाएँगे, उनके पीछे अटूट परिश्रम और लगन की ही कहानी होगी।

विद्यार्थियों के लिए परिश्रम का विशेष महत्त्व है। विद्यार्थी कल साधना कल है। यही वह समय है जब विद्यार्थी को केवल अपने अध्ययन-मनन और शारीरिक स्वास्थ्य बनाने के अतिरिक्त और कुछ भी करना नहीं। होता उसका एकमात्र ध्यान अपने शारीरिक-मानसिक विकास को समृद्ध करने की ओर रहता है। खाने-पिने, पहनने-ओढ़ने अथवा पढ़ाई-लिखाई के खर्च आदि की उन्हें कोई चिंता नहीं होती। ऐसी स्थिति में भी यदि वे परिश्रम से जी चुराए तो उनका दुर्भाग्य है; क्योंकि कहा गया है-

‘सुखार्थिनो कुतो विद्या, विद्यार्थिनो कुतो सुखम्’।

अर्थात् सुख चाहने वाले के लिए विद्या कहाँ और विद्या की इच्छा रखने वाले को सुख कहाँ? परिश्रमी व्यक्ति को अपनी दृष्टि केवल अपने उद्देश्य बिंदु पर गड़ाए आगे बढ़ना चाहिए। परिश्रम एक शक्ति है। जिसने भी यह शक्ति प्राप्त कर ली सफलता ने उसके गले में जयमाल डाल दी। परिश्रम के बल पर ही व्यक्ति असंभव की संभव कर दिखता है। परिश्रम से ही उसने कोयले से हीरे का निर्माण किया, परिश्रम से ही उसने प्रकृति पर अपना अधिकार दिया।

परिश्रम जीवन की मूल शक्ति, उन्नति और सफलता का रहस्य है।

Sub questions

Question Number : 81 Question Id : 1679437312 Question Type : MCQ Option Shuffling : Yes Display Question Number : Yes  
Single Line Question Option : No Option Orientation : Vertical

Correct : 1 Wrong : 0.25

सफलता का आधार होता है:

Options :

- ☒ श्रम
- ☐ भाग्य
- ☐ विद्या
- ☐ शक्ति

Question Number : 82 Question Id : 1679437313 Question Type : MCQ Option Shuffling : Yes Display Question Number : Yes  
Single Line Question Option : No Option Orientation : Vertical

Correct : 1 Wrong : 0.25

सफलता के लिए विद्यार्थी को छोड़ना पड़ता है:

Options :

- ☒ सुख
- ☐ दुःख
- ☐ परिवार
- ☐ मित्र-बंधू

Question Number : 83 Question Id : 1679437314 Question Type : MCQ Option Shuffling : Yes Display Question Number : Yes  
Single Line Question Option : No Option Orientation : Vertical

Correct : 1 Wrong : 0.25

निम्नलिखित में से मजदुर कौन बनेगा?

Options :

- ☐ फोर्ड
- ☒ खुशचेन खान
- ☐ टाटा

✖ मोदी

Question Number : 84 Question Id : 1679437315 Question Type : MCQ Option Shuffling : Yes Display Question Number : Yes  
Single Line Question Option : No Option Orientation : Vertical

Correct : 1 Wrong : 0.25

परिश्रम व्यक्ति को नहीं देता:

Options :

✖ सफलता

✖ संपलता

✖ उत्कर्ष

✔ आत्मग्लानि

Question Number : 85 Question Id : 1679437316 Question Type : MCQ Option Shuffling : Yes Display Question Number : Yes  
Single Line Question Option : No Option Orientation : Vertical

Correct : 1 Wrong : 0.25

गदयांश का उपयुक्त शीर्षक होगा:

Options :

✔ परिश्रम का महत्व

✖ टाटा और उद्योग

✖ छात्रों की सफलता

✖ परिश्रम की देन

Sub-Section Number:

2

Sub-Section Id:

167943427

Question Shuffling Allowed :

Yes

Question Number : 86 Question Id : 1679437317 Question Type : MCQ Option Shuffling : Yes Display Question Number : Yes  
Single Line Question Option : No Option Orientation : Vertical

Correct : 1 Wrong : 0.25

निम्नलिखित में तद्भव शब्द छाँटिए:

Options :

✔ कपडा

✖ माधुर्य

✖ विवाह

✖ संदेश

Question Number : 87 Question Id : 1679437318 Question Type : MCQ Option Shuffling : Yes Display Question Number : Yes  
Single Line Question Option : No Option Orientation : Vertical

Correct : 1 Wrong : 0.25

निम्नलिखित शब्दों में से तत्सम शब्द चुनिए:

Options :

✖ सुंदर हाथ

✖ सोना

✖ मुँह

✓ आयु वधि

Question Number : 88 Question Id : 1679437319 Question Type : MCQ Option Shuffling : Yes Display Question Number : Yes  
Single Line Question Option : No Option Orientation : Vertical

Correct : 1 Wrong : 0.25

‘नरसिंह’ शब्द में कौन-सा समास है?

Options :

✓ कर्मधारय

✖ तत्पुरुष

✖ अव्ययीभाव

✖ बहुब्रीहि

Question Number : 89 Question Id : 1679437320 Question Type : MCQ Option Shuffling : Yes Display Question Number : Yes  
Single Line Question Option : No Option Orientation : Vertical

Correct : 1 Wrong : 0.25

‘अत्याचार’ शब्द में संधि है:

Options :

- ✖ अयादि संधि
- ✖ वृद्धि संधि
- ✖ दीर्घ संधि
- ✔ यणू संधि

Question Number : 90 Question Id : 1679437321 Question Type : MCQ Option Shuffling : Yes Display Question Number : Yes  
Single Line Question Option : No Option Orientation : Vertical  
Correct : 1 Wrong : 0.25

‘बाजार’ शब्द का बहुवचन (अभिमालिक) होगा:

Options :

- ✖ बजारों
- ✔ बाजार
- ✖ बाजारें
- ✖ बाजारो

Question Number : 91 Question Id : 1679437322 Question Type : MCQ Option Shuffling : Yes Display Question Number : Yes  
Single Line Question Option : No Option Orientation : Vertical  
Correct : 1 Wrong : 0.25

‘सदाबहुवचन’ में प्रयुक्त होने वाला शब्द है:

Options :

- ✔ दर्शन
- ✖ धन
- ✖ मुनि
- ✖ कल्याण

Question Number : 92 Question Id : 1679437323 Question Type : MCQ Option Shuffling : Yes Display Question Number : Yes  
Single Line Question Option : No Option Orientation : Vertical  
Correct : 1 Wrong : 0.25

निम्नलिखित में से भाववाचक संज्ञा शब्द छाँटिए:

Options :



- ✓ वार्धक्य
- ✗ तन्मय
- ✗ लघु
- ✗ विश्वसनीय

Question Number : 93 Question Id : 1679437324 Question Type : MCQ Option Shuffling : Yes Display Question Number : Yes  
Single Line Question Option : No Option Orientation : Vertical

Correct : 1 Wrong : 0.25

कौनसा शब्द 'जल' का पर्यायवाची है?

Options :

- ✓ चय
- ✗ जलग
- ✗ अंबुधी
- ✗ तोयद

Note: For this question, discrepancy is found in question/answer. So, this question is ignored for all candidates.

Question Number : 94 Question Id : 1679437325 Question Type : MCQ Option Shuffling : Yes Display Question Number : Yes  
Single Line Question Option : No Option Orientation : Vertical

Correct : 1 Wrong : 0.25

'जंगम' शब्द का विलोम होता है:

Options :

- ✗ गतिशील
- ✗ चांचल्य
- ✗ स्थिर
- ✓ स्थावर

Question Number : 95 Question Id : 1679437326 Question Type : MCQ Option Shuffling : Yes Display Question Number : Yes  
Single Line Question Option : No Option Orientation : Vertical

Correct : 1 Wrong : 0.25

'जो नष्ट होने वाला हो' इस वाक्यांश के लिए एक शब्द होगा:

Options :

- ✖ अचिर
- ✖ क्षणभंगुर
- ✔ नशवर
- ✖ विनष्ट

Question Number : 96 Question Id : 1679437327 Question Type : MCQ Option Shuffling : Yes Display Question Number : Yes  
Single Line Question Option : No Option Orientation : Vertical  
Correct : 1 Wrong : 0.25

निम्नलिखित में से कौन-सा शब्द पुलिंग है?

- Options :
- ✖ बात
  - ✖ कोशिश
  - ✔ कपुर
  - ✖ भाषा

Question Number : 97 Question Id : 1679437328 Question Type : MCQ Option Shuffling : Yes Display Question Number : Yes  
Single Line Question Option : No Option Orientation : Vertical  
Correct : 1 Wrong : 0.25

निम्नलिखित में से कोनसी क्रिया अकर्मक है?

- Options :
- ✖ खाना
  - ✖ लाना
  - ✖ देना
  - ✔ सोना

Question Number : 98 Question Id : 1679437329 Question Type : MCQ Option Shuffling : Yes Display Question Number : Yes  
Single Line Question Option : No Option Orientation : Vertical  
Correct : 1 Wrong : 0.25

नीचे लिखे वाक्यों में से शुद्ध वाक्य छाँटिए:

Options :

- ✖ मेरे को तेरे को दस रूपए देने है
- ✖ तुम भी चलियेना क्या
- ✖ उसने रातभर सोया
- ✔ शिक्षक कक्षा में है

Question Number : 99 Question Id : 1679437330 Question Type : MCQ Option Shuffling : Yes Display Question Number : Yes  
Single Line Question Option : No Option Orientation : Vertical  
Correct : 1 Wrong : 0.25

कान भरना मुहावरे का अर्थ है:

Options :

- ✖ कान में दवा डालना
- ✔ किसी के विरुद्ध शिकायत कर किसी को बहकना
- ✖ कान साफ करना
- ✖ काना-कुसी करना

Question Number : 100 Question Id : 1679437331 Question Type : MCQ Option Shuffling : Yes Display Question Number : Yes  
Single Line Question Option : No Option Orientation : Vertical  
Correct : 1 Wrong : 0.25

धोनी का कुत्ता घर का न घाट का लोकोक्ति का अर्थ है:

Options :

- ✖ गधा बनना
- ✖ धोनी के घर जाना
- ✔ कहीं ठौर-ठिकाना न होना
- ✖ धोनी के कुत्ते को रास्ता न मिलना

Subject Related

Group Number :

6

Group Id :

167943152

Group Maximum Duration :	0
Group Minimum Duration :	0
Revisit allowed for view? :	No
Revisit allowed for edit? :	No
Break time:	0
Group Marks:	20

	Subject Related
Section Id :	167943211
Section Number :	1
Section type :	Online
Mandatory or Optional:	Mandatory
Number of Questions:	20
Number of Questions to be attempted:	20
Section Marks:	20
Display Number Panel:	Yes
Group All Questions:	No

Sub-Section Number:	1
Sub-Section Id:	167943428
Question Shuffling Allowed :	Yes

Question Number : 101 Question Id : 1679437332 Question Type : MCQ Option Shuffling : Yes Display Question Number : Yes  
Single Line Question Option : No Option Orientation : Vertical  
Correct : 1 Wrong : 0.25

If the half of a reactant is independent of its initial concentration, then the order of the reaction is:

Options :

✖ 0

✔ 1

✖ 2

✖ 3

Question Number : 102 Question Id : 1679437333 Question Type : MCQ Option Shuffling : Yes Display Question Number : Yes  
Single Line Question Option : No Option Orientation : Vertical  
Correct : 1 Wrong : 0.25

The ratio of specific rate constants at two different temperatures, separated by 10 °C, is called as:

Options :

✖ Activity coefficient

✖ Activation energy

✗ Threshold energy

✓ Temperature coefficient

Question Number : 103 Question Id : 1679437334 Question Type : MCQ Option Shuffling : Yes Display Question Number : Yes  
Single Line Question Option : No Option Orientation : Vertical

Correct : 1 Wrong : 0.25

The rate constant of a reaction at 40 °C is exactly twice of that at 30 °C. Then the energy of activation is approximately (in k Cal mol<sup>-1</sup>):

Options :

✗ 12.2

✓ 13.0

✗ 14.2

✗ 15.0

Question Number : 104 Question Id : 1679437335 Question Type : MCQ Option Shuffling : Yes Display Question Number : Yes  
Single Line Question Option : No Option Orientation : Vertical

Correct : 1 Wrong : 0.25

According to Lindemann-Hinshelwood mechanism of unimolecular reactions, the observed order at low concentration follows:

Options :

✗ Zero order

✗ Third order

✗ First order

✓ Second order

Question Number : 105 Question Id : 1679437336 Question Type : MCQ Option Shuffling : Yes Display Question Number : Yes  
Single Line Question Option : No Option Orientation : Vertical

Correct : 1 Wrong : 0.25

Chemical reactions that proceed from reactants to products through one or more intermediate stage(s) are called:

Options :

✗ Parallel reactions

✗ Opposing reactions

✓ Consecutive reactions

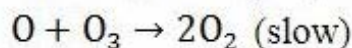
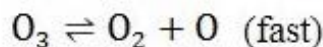


✖ Simple reactions

Question Number : 106 Question Id : 1679437337 Question Type : MCQ Option Shuffling : Yes Display Question Number : Yes  
Single Line Question Option : No Option Orientation : Vertical

Correct : 1 Wrong : 0.25

The chemical reaction  $2O_3 \rightarrow 3O_2$  proceeds as:



The rate law expression for this reaction should be:

Options :

✖  $r = K[O_3]^2$

✔  $r = K[O_3]^2[O_2]^{-1}$

✖  $r = K[O_3][O_2]^2$

✖  $r = K[O_3]^2[O_2]^1$

Question Number : 107 Question Id : 1679437338 Question Type : MCQ Option Shuffling : Yes Display Question Number : Yes  
Single Line Question Option : No Option Orientation : Vertical

Correct : 1 Wrong : 0.25

Temperature Jump Relaxation method is used to study:

Options :

✔ Fast reactions

✖ Slow reactions

✖ Moderate reactions

✖ Substitution reactions

Question Number : 108 Question Id : 1679437339 Question Type : MCQ Option Shuffling : Yes Display Question Number : Yes  
Single Line Question Option : No Option Orientation : Vertical

Correct : 1 Wrong : 0.25

75% of a first-order reaction is completed in 30 minutes. The time required for a 93.75% completion of the same reaction (in hours) is:

Options :

✖ 2

✖ 60

✖ 120

✔ 1

Question Number : 109 Question Id : 1679437340 Question Type : MCQ Option Shuffling : Yes Display Question Number : Yes  
Single Line Question Option : No Option Orientation : Vertical

Correct : 1 Wrong : 0.25

A solution of 0.635 g of a protein in 100 mL water has an osmotic pressure due to the protein of 2.35 cm H<sub>2</sub>O at 27 °C. Then the molecular weight of the protein is:

Options :

✔ 69,000

✖ 99,000

✖ 79,000

✖ 89,000

Question Number : 110 Question Id : 1679437341 Question Type : MCQ Option Shuffling : Yes Display Question Number : Yes  
Single Line Question Option : No Option Orientation : Vertical

Correct : 1 Wrong : 0.25

18.2 g of urea is dissolved in 100 g of water at 50 °C. The lowering of vapour pressure produces 5 mm of Hg. The molecular weight of urea is (given that the vapour pressure of water at 50 °C is 92 mm of Hg):

Options :

✖ 92

✖ 114.02

✔ 57.05

✖ 64.09

Question Number : 111 Question Id : 1679437342 Question Type : MCQ Option Shuffling : Yes Display Question Number : Yes  
Single Line Question Option : No Option Orientation : Vertical

Correct : 1 Wrong : 0.25

For solutes showing association, the value of van't Hoff factor (i) is:

Options :

✔ < 1

✖ > 1

✖ = 1

✖ = 0

Question Number : 112 Question Id : 1679437343 Question Type : MCQ Option Shuffling : Yes Display Question Number : Yes  
Single Line Question Option : No Option Orientation : Vertical

Correct : 1 Wrong : 0.25

Which of the following is independent of temperature?

Options :

✖ Molarity

✖ Normality

✖ Formality

✔ Molality

Question Number : 113 Question Id : 1679437344 Question Type : MCQ Option Shuffling : Yes Display Question Number : Yes  
Single Line Question Option : No Option Orientation : Vertical

Correct : 1 Wrong : 0.25

0.220 g of substance dissolved in 22.0 g of benzene lowered the freezing point of benzene by 0.283. Then the molecular weight of the substance is (given that  $K_f = 5.12 \text{ }^\circ\text{C mol}^{-1}$ ):

Options :

✔ 128.9

✖ 264.9

✖ 378.4

✖ 468.2

Note: For this question, discrepancy is found in question/answer. So, this question is ignored for all candidates.

Question Number : 114 Question Id : 1679437345 Question Type : MCQ Option Shuffling : Yes Display Question Number : Yes  
Single Line Question Option : No Option Orientation : Vertical

Correct : 1 Wrong : 0.25

For an ideal solution, which of the following is true?

Options :

✖  $\Delta H_{\text{mix}} \neq 0$

✔  $\Delta V_{\text{mix}} = 0$

✖  $\Delta G_{\text{mix}} = 0$

✗  $\Delta S_{\text{mix}} = 0$

Question Number : 115 Question Id : 1679437346 Question Type : MCQ Option Shuffling : Yes Display Question Number : Yes  
Single Line Question Option : No Option Orientation : Vertical

Correct : 1 Wrong : 0.25

The vapour pressure of 0.1M  $\text{KNO}_3$  at 100 °C is 730 Torr. The activity of water in the solution at this temperature is:

Options :

✗ 1

✓ 0.96

✗ 0.48

✗ 0.28

Question Number : 116 Question Id : 1679437347 Question Type : MCQ Option Shuffling : Yes Display Question Number : Yes  
Single Line Question Option : No Option Orientation : Vertical

Correct : 1 Wrong : 0.25

100 mL each of 1M  $\text{AgNO}_3$  and 1M  $\text{NaCl}$  are mixed .The nitrate ion concentration in the resulting solution is:

Options :

✗ 1 M

✓ 0.5 M

✗ 0.75 M

✗ 0.25 M

Question Number : 117 Question Id : 1679437348 Question Type : MCQ Option Shuffling : Yes Display Question Number : Yes  
Single Line Question Option : No Option Orientation : Vertical

Correct : 1 Wrong : 0.25

For a two component system, the reduced phase rule equation is:

Options :

✓  $F = 3 - P$

✗  $F = 2 - P$

✗  $F = 1 - P$

✗  $F = 4 - P$

Question Number : 118 Question Id : 1679437349 Question Type : MCQ Option Shuffling : Yes Display Question Number : Yes  
Single Line Question Option : No Option Orientation : Vertical



Correct : 1 Wrong : 0.25

A system that can exchange energy but not matter with the surroundings is called:

Options :

- ☒ Closed system
- ☐ Open system
- ☐ Isolated system
- ☐ Isothermal system

Question Number : 119 Question Id : 1679437350 Question Type : MCQ Option Shuffling : Yes Display Question Number : Yes  
Single Line Question Option : No Option Orientation : Vertical

Correct : 1 Wrong : 0.25

The equilibrium constant for a reaction is not affected by the presence of:

Options :

- ☐ Temperature
- ☐ Pressure
- ☒ Catalyst
- ☐  $P^H = 4$

Question Number : 120 Question Id : 1679437351 Question Type : MCQ Option Shuffling : Yes Display Question Number : Yes  
Single Line Question Option : No Option Orientation : Vertical

Correct : 1 Wrong : 0.25

For a given reaction  $A_{2(g)} + 3B_{2(g)} \rightleftharpoons 2AB_{3(g)}$ ,  $\Delta H = -ve$

For this reaction, the favorable condition for decomposition of  $AB_3$  is:

Options :

- ☒ High temperature, low pressure
- ☐ Low temperature, low pressure
- ☐ High temperature, high pressure
- ☐ Low temperature, high pressure

Group Number : 7  
Group Id : 167943153  
Group Maximum Duration : 0  
Group Minimum Duration : 0  
Revisit allowed for view? : No  
Revisit allowed for edit? : No  
Break time: 0  
Group Marks: 20

Section Id : 167943212  
Section Number : 1  
Section type : Online  
Mandatory or Optional: Mandatory  
Number of Questions: 20  
Number of Questions to be attempted: 20  
Section Marks: 20  
Display Number Panel: Yes  
Group All Questions: No

Sub-Section Number: 1  
Sub-Section Id: 167943429  
Question Shuffling Allowed : Yes

Question Number : 121 Question Id : 1679437352 Question Type : MCQ Option Shuffling : Yes Display Question Number : Yes  
Single Line Question Option : No Option Orientation : Vertical

Correct : 1 Wrong : 0.25

Ostwald dilution law failed completely when it was applied to:

Options :

✗  $\text{CH}_3\text{COOH}$

✓ KCl

✗  $\text{H}_2\text{CO}_3$

✗  $\text{NH}_3$

Question Number : 122 Question Id : 1679437353 Question Type : MCQ Option Shuffling : Yes Display Question Number : Yes  
Single Line Question Option : No Option Orientation : Vertical

Correct : 1 Wrong : 0.25

The solubility of  $\text{Al}(\text{OH})_3$  in water at  $25^\circ\text{C}$  is (given  $K_{sp} = 8.5 \times 10^{-32}$ ):

Options :

✗  $5.8 \times 10^{-5} \text{ g/lit}$

✗  $5.8 \times 10^{-2}$  g/lit

✗  $5.8 \times 10^{-3}$  g/lit

✓  $5.8 \times 10^{-7}$  g/lit

Question Number : 123 Question Id : 1679437354 Question Type : MCQ Option Shuffling : Yes Display Question Number : Yes  
Single Line Question Option : No Option Orientation : Vertical

Correct : 1 Wrong : 0.25

The pH of 0.1M aqueous solution of  $\text{CH}_3\text{COONa}$  at  $25^\circ\text{C}$  is  
(given that  $K_a$  for acetic acid =  $1.75 \times 10^{-5}$  &  $K_w = 1.008 \times 10^{-14}$ )

Options :

✗ 8.38

✗ 8.58

✗ 8.68

✓ 8.88

Question Number : 124 Question Id : 1679437355 Question Type : MCQ Option Shuffling : Yes Display Question Number : Yes  
Single Line Question Option : No Option Orientation : Vertical

Correct : 1 Wrong : 0.25

The hydrolysis constant for the salts of weak base and strong acid is given by:

Options :

✗  $\frac{K_w}{K_a K_b}$

✗  $K_w * (K_a K_b)$

✗  $\frac{K_w}{K_a}$

✓  $\frac{K_w}{K_b}$

Question Number : 125 Question Id : 1679437356 Question Type : MCQ Option Shuffling : Yes Display Question Number : Yes  
Single Line Question Option : No Option Orientation : Vertical

Correct : 1 Wrong : 0.25

A buffer solution contains 0.20 mole of  $\text{NH}_4\text{OH}$  and 0.25 mole of  $\text{NH}_4\text{Cl}$  per litre, then the pH value of the solution is  
(given that dissociation constant of  $\text{NH}_4\text{OH}$  at room temperature is  $1.81 \times 10^{-5}$ ):

Options :

✗ 11.89

✗ 8.72

✓ 9.16

✗ 10.3

Question Number : 126 Question Id : 1679437357 Question Type : MCQ Option Shuffling : Yes Display Question Number : Yes  
Single Line Question Option : No Option Orientation : Vertical

Correct : 1 Wrong : 0.25

Which of the following expressions represents the criterion for the reaction to be spontaneous?

Options :

✗  $(dS)_{U,V} < 0$

✗  $(dU)_{S,V} > 0$

✓  $(dG)_{T,P} < 0$

✗  $(dH)_{T,P} > 0$

Question Number : 127 Question Id : 1679437358 Question Type : MCQ Option Shuffling : Yes Display Question Number : Yes  
Single Line Question Option : No Option Orientation : Vertical

Correct : 1 Wrong : 0.25

When a triatomic gas is adsorbed as atoms on the surface of a solid, the Langmuir adsorption isotherm becomes:

Options :

✗  $\theta = \frac{KP^{\frac{1}{2}}}{(1+KP^{\frac{1}{2}})}$

✗  $\theta = \frac{KP}{(1+KP)}$

✓  $\theta = \frac{KP^{\frac{3}{2}}}{(1+KP^{\frac{3}{2}})}$

✗  $\theta = \frac{KP^3}{(1+KP^3)}$

Question Number : 128 Question Id : 1679437359 Question Type : MCQ Option Shuffling : Yes Display Question Number : Yes  
Single Line Question Option : No Option Orientation : Vertical

Correct : 1 Wrong : 0.25



The transition for which the first derivative of the chemical potential with respect to temperature is continuous but its second derivative of the chemical potential with respect to temperature is discontinuous is classified as:

Options :

- ☐ First-order phase transition
- ☒ Second-order phase transition
- ☐ Zero-order phase transition
- ☐ Lambda transition

Question Number : 129 Question Id : 1679437360 Question Type : MCQ Option Shuffling : Yes Display Question Number : Yes  
Single Line Question Option : No Option Orientation : Vertical

Correct : 1 Wrong : 0.25

According to Freundlich adsorption isotherm,  $a = Kp^n$ , where n's value is:

Options :

- ☒  $< 1$
- ☐  $> 1$
- ☐  $= 1$
- ☐  $= 0$

Question Number : 130 Question Id : 1679437361 Question Type : MCQ Option Shuffling : Yes Display Question Number : Yes  
Single Line Question Option : No Option Orientation : Vertical

Correct : 1 Wrong : 0.25

Cake is an example of:

Options :

- ☐ Solid in liquid
- ☒ Gas in solid
- ☐ Liquid in solid
- ☐ Solid in solid

Question Number : 131 Question Id : 1679437362 Question Type : MCQ Option Shuffling : Yes Display Question Number : Yes  
Single Line Question Option : No Option Orientation : Vertical

Correct : 1 Wrong : 0.25

The catalytic action of an enzyme is:

Options :

- ☒ Highly specific
- ☐ Non specific
- ☐ Does not depend on the nature of substrate
- ☐ Heterogeneous

Question Number : 132 Question Id : 1679437363 Question Type : MCQ Option Shuffling : Yes Display Question Number : Yes  
Single Line Question Option : No Option Orientation : Vertical

Correct : 1 Wrong : 0.25

The coagulating power of an effective ion carrying the charge opposite to the sol particles has been illustrated by:

Options :

- ☐ Brownian movement
- ☐ Gold number
- ☐ Tyndall effect
- ☒ Hardy-schulze rule

Question Number : 133 Question Id : 1679437364 Question Type : MCQ Option Shuffling : Yes Display Question Number : Yes  
Single Line Question Option : No Option Orientation : Vertical

Correct : 1 Wrong : 0.25

Arsenic(III) sulphide forms a sol with a negative charge. Which of the following ionic substances should be most effective in the coagulating sol?

Options :

- ☐ KCl
- ☐  $MgCl_2$
- ☒  $Al_2(SO_4)_3$
- ☐  $Na_3PO_4$

Question Number : 134 Question Id : 1679437365 Question Type : MCQ Option Shuffling : Yes Display Question Number : Yes  
Single Line Question Option : No Option Orientation : Vertical

Correct : 1 Wrong : 0.25

There is desorption of physical adsorption when:

Options :

- ✓ Temperature increases
- ✗ Pressure increases
- ✗ Temperature decreases
- ✗ Concentration increases

Question Number : 135 Question Id : 1679437366 Question Type : MCQ Option Shuffling : Yes Display Question Number : Yes  
Single Line Question Option : No Option Orientation : Vertical

Correct : 1 Wrong : 0.25

Micelles from the ionic surfactants can be formed only above a certain temperature called as:

Options :

- ✗ Inversion temperature
- ✗ Boyle's temperature
- ✗ Transition temperature
- ✓ Kraft temperature

Question Number : 136 Question Id : 1679437367 Question Type : MCQ Option Shuffling : Yes Display Question Number : Yes  
Single Line Question Option : No Option Orientation : Vertical

Correct : 1 Wrong : 0.25

According to Lewis concept, the trend in the relative basic strengths of  $\text{ClO}_4^-$ ,  $\text{ClO}_3^-$ ,  $\text{ClO}_2^-$  is:

Options :

- ✓  $\text{ClO}_4^- > \text{ClO}_3^- > \text{ClO}_2^-$
- ✗  $\text{ClO}_3^- > \text{ClO}_2^- > \text{ClO}_4^-$
- ✗  $\text{ClO}_2^- > \text{ClO}_3^- > \text{ClO}_4^-$
- ✗  $\text{ClO}_4^- > \text{ClO}_2^- > \text{ClO}_3^-$

Question Number : 137 Question Id : 1679437368 Question Type : MCQ Option Shuffling : Yes Display Question Number : Yes  
Single Line Question Option : No Option Orientation : Vertical

Correct : 1 Wrong : 0.25

The revised metric system was proposed by:

Options :

- ✗ U.S. Metric Association

- ✓ General Conference on Weights and Measures
- ✗ International Organization for Standardization
- ✗ National Institute of Standards and Technology

Question Number : 138 Question Id : 1679437369 Question Type : MCQ Option Shuffling : Yes Display Question Number : Yes  
Single Line Question Option : No Option Orientation : Vertical

Correct : 1 Wrong : 0.25

The SI unit for the amount of substance is:

Options :

- ✗ Kilogram
- ✗ Gram
- ✓ Mole
- ✗ Candela

Question Number : 139 Question Id : 1679437370 Question Type : MCQ Option Shuffling : Yes Display Question Number : Yes  
Single Line Question Option : No Option Orientation : Vertical

Correct : 1 Wrong : 0.25

The number of significant figures in 2540 L is:

Options :

- ✓ 3
- ✗ 4
- ✗ 1
- ✗ 2

Question Number : 140 Question Id : 1679437371 Question Type : MCQ Option Shuffling : Yes Display Question Number : Yes  
Single Line Question Option : No Option Orientation : Vertical

Correct : 1 Wrong : 0.25

“A given compound always contains exactly the same proportion of elements by weight” is stated under which law?

Options :

- ✗ Law of conservation of mass
- ✗ Law of multiple proportions



✖ Avogadro's law

✔ Law of definite proportions

Subject Related	
Group Number :	8
Group Id :	167943154
Group Maximum Duration :	0
Group Minimum Duration :	0
Revisit allowed for view? :	No
Revisit allowed for edit? :	No
Break time:	0
Group Marks:	20

Subject Related	
Section Id :	167943213
Section Number :	1
Section type :	Online
Mandatory or Optional:	Mandatory
Number of Questions:	20
Number of Questions to be attempted:	20
Section Marks:	20
Display Number Panel:	Yes
Group All Questions:	No

Sub-Section Number:	1
Sub-Section Id:	167943430
Question Shuffling Allowed :	Yes

Question Number : 141 Question Id : 1679437372 Question Type : MCQ Option Shuffling : Yes Display Question Number : Yes  
Single Line Question Option : No Option Orientation : Vertical

Correct : 1 Wrong : 0.25

What is the mass percentage of S in  $\text{H}_2\text{SO}_4$  ?

Options :

✔ 32.65%

✖ 65.30%

✖ 28.00%

✖ 48.32%

Question Number : 142 Question Id : 1679437373 Question Type : MCQ Option Shuffling : Yes Display Question Number : Yes  
Single Line Question Option : No Option Orientation : Vertical

Correct : 1 Wrong : 0.25

The mass percentage composition of a compound is 76.71% C, 7.02% H and 16.27% N. What is its empirical formula?

Options :

✓  $C_{11}H_{12}N_2$

✗  $C_{10}H_{14}NO$

✗  $C_{11}H_{12}N_2O$

✗  $C_{10}H_{12}N_2$

Question Number : 143 Question Id : 1679437374 Question Type : MCQ Option Shuffling : Yes Display Question Number : Yes  
Single Line Question Option : No Option Orientation : Vertical

Correct : 1 Wrong : 0.25

The radius of the first Bohr orbit for hydrogen atom is:

Options :

✗  $0.53 \times 10^{-9} \text{ cm}$

✗  $0.53 \times 10^{-10} \text{ cm}$

✓  $0.53 \times 10^{-8} \text{ cm}$

✗  $0.53 \times 10^{-12} \text{ cm}$

Question Number : 144 Question Id : 1679437375 Question Type : MCQ Option Shuffling : Yes Display Question Number : Yes  
Single Line Question Option : No Option Orientation : Vertical

Correct : 1 Wrong : 0.25

Zeeman effect corresponds to the splitting of spectral lines in the presence of:

Options :

✗ Electric field

✓ Magnetic field

✗ Both electric and magnetic fields

✗ Neither electric field nor magnetic field

Question Number : 145 Question Id : 1679437376 Question Type : MCQ Option Shuffling : Yes Display Question Number : Yes  
Single Line Question Option : No Option Orientation : Vertical

Correct : 1 Wrong : 0.25

Pauli exclusion principle can't be applied to:

Options :

✓  $H^+$

✗  $H^-$

✗ He

✗ Li

Question Number : 146 Question Id : 1679437377 Question Type : MCQ Option Shuffling : Yes Display Question Number : Yes  
Single Line Question Option : No Option Orientation : Vertical

Correct : 1 Wrong : 0.25

Which of the following electronic configurations is correct according to Hund's rule?

Options :

✗ 

↑↓	↑↓	
----	----	--

✗ 

↑↑	↑	↑
----	---	---

✗ 

↑	↑↓	↑
---	----	---

✓ 

↑↓	↑	↑
----	---	---

Question Number : 147 Question Id : 1679437378 Question Type : MCQ Option Shuffling : Yes Display Question Number : Yes  
Single Line Question Option : No Option Orientation : Vertical

Correct : 1 Wrong : 0.25

Uncertainty in the position of an electron moving with a velocity of 200 m/s, accurate up to 0.01%, will be:

Options :

✓  $2.9 \times 10^{-3} \text{ m}$

✗  $2.9 \times 10^{-2} \text{ m}$

✗  $2.9 \times 10^{-5} \text{ m}$

✗  $2.9 \times 10^{-1} \text{ m}$

Question Number : 148 Question Id : 1679437379 Question Type : MCQ Option Shuffling : Yes Display Question Number : Yes  
Single Line Question Option : No Option Orientation : Vertical

Correct : 1 Wrong : 0.25

The relationship between atomic number ( $Z$ ), effective nuclear charge ( $Z_{\text{eff}}$ ) and shielding constant ( $\sigma$ ) is:

Options :

☐  $Z_{\text{eff}} = Z + \sigma$

☐  $Z = Z_{\text{eff}} - \sigma$

☒  $Z_{\text{eff}} = Z - \sigma$

☐  $Z = Z_{\text{eff}} + \sigma$

Question Number : 149 Question Id : 1679437380 Question Type : MCQ Option Shuffling : Yes Display Question Number : Yes  
Single Line Question Option : No Option Orientation : Vertical

Correct : 1 Wrong : 0.25

The element with atomic number 37 belongs to which block in the modern periodic table?

Options :

☒ s-block

☐ p-block

☐ d-block

☐ f-block

Question Number : 150 Question Id : 1679437381 Question Type : MCQ Option Shuffling : Yes Display Question Number : Yes  
Single Line Question Option : No Option Orientation : Vertical

Correct : 1 Wrong : 0.25

What is the IUPAC name of the element with atomic number 112?

Options :

☐ Unnilennium

☐ Ununnilium

☐ Unununium

☒ Ununbium

Question Number : 151 Question Id : 1679437382 Question Type : MCQ Option Shuffling : Yes Display Question Number : Yes  
Single Line Question Option : No Option Orientation : Vertical

Correct : 1 Wrong : 0.25

The correct order of increasing size for the ions  $F^-$ ,  $Na^+$ ,  $O^{2-}$ ,  $Al^{3+}$ ,  $Mg^{2+}$  is:

Options :



✓  $\text{Al}^{3+} < \text{Mg}^{2+} < \text{Na}^+ < \text{F}^- < \text{O}^{2-}$

✗  $\text{Al}^{3+} < \text{Na}^+ < \text{Mg}^{2+} < \text{F}^- < \text{O}^{2-}$

✗  $\text{O}^{2-} < \text{F}^- < \text{Al}^{3+} < \text{Na}^+ < \text{Mg}^{2+}$

✗  $\text{Al}^{3+} < \text{Na}^+ < \text{O}^{2-} < \text{F}^- < \text{Mg}^{2+}$

Question Number : 152 Question Id : 1679437383 Question Type : MCQ Option Shuffling : Yes Display Question Number : Yes  
Single Line Question Option : No Option Orientation : Vertical

Correct : 1 Wrong : 0.25

Which of the following metal hydrides has the crystal structure of rutile?

Options :

✓  $\text{MgH}_2$

✗  $\text{LiH}$

✗  $\text{NaH}$

✗  $\text{BaH}_2$

Question Number : 153 Question Id : 1679437384 Question Type : MCQ Option Shuffling : Yes Display Question Number : Yes  
Single Line Question Option : No Option Orientation : Vertical

Correct : 1 Wrong : 0.25

Which of the following methods can't be used for the preparation of hydrogen gas?

Options :

✗ Reaction of saltlike hydrides with water

✓ Reaction of ethanolamine solution with  $\text{CO}_2$

✗ Steam reformer process

✗ Electrolysis of the aqueous solution of  $\text{NaOH}$  or  $\text{KOH}$

Question Number : 154 Question Id : 1679437385 Question Type : MCQ Option Shuffling : Yes Display Question Number : Yes  
Single Line Question Option : No Option Orientation : Vertical

Correct : 1 Wrong : 0.25

The common zeolite used for softening of hard water is Natrolite. Its molecular formula is:

Options :

✓  $\text{Na}_2\text{OAl}_2\text{O}_3 \cdot 3\text{SiO}_2 \cdot 2\text{H}_2\text{O}$

✗  $\text{Na}_2\text{OAl}_2\text{O}_3 \cdot 2\text{H}_2\text{O}$

✗  $\text{CaOAl}_2\text{O}_3 \cdot \text{SiO}_2 \cdot 2\text{H}_2\text{O}$

✗  $\text{MgOAl}_2\text{O}_3 \cdot 3\text{SiO}_2 \cdot 2\text{H}_2\text{O}$

Question Number : 155 Question Id : 1679437386 Question Type : MCQ Option Shuffling : Yes Display Question Number : Yes  
Single Line Question Option : No Option Orientation : Vertical

Correct : 1 Wrong : 0.25

What is the temporary hardness of water if water contains 7.3 mg/L  $\text{Mg}(\text{HCO}_3)_2$ , 16.2 mg/L  $\text{Ca}(\text{HCO}_3)_2$ , 9.5 mg/L  $\text{MgCl}_2$  and 13.6 mg/L  $\text{CaSO}_4$ ?

Options :

✗ 25 mg/L

✗ 35 mg/L

✗ 20 mg/L

✓ 15 mg/L

Question Number : 156 Question Id : 1679437387 Question Type : MCQ Option Shuffling : Yes Display Question Number : Yes  
Single Line Question Option : No Option Orientation : Vertical

Correct : 1 Wrong : 0.25

Spodumene is the mineral of which element?

Options :

✓ Lithium

✗ Sodium

✗ Potassium

✗ Caesium

Question Number : 157 Question Id : 1679437388 Question Type : MCQ Option Shuffling : Yes Display Question Number : Yes  
Single Line Question Option : No Option Orientation : Vertical

Correct : 1 Wrong : 0.25

Which of the group 1 metal hydrides is stable up to 900 °C?

Options :

- ☐ Potassium hydride
- ☐ Sodium hydride
- ☒ Lithium hydride
- ☐ Caesium hydride

Question Number : 158 Question Id : 1679437389 Question Type : MCQ Option Shuffling : Yes Display Question Number : Yes  
Single Line Question Option : No Option Orientation : Vertical

Correct : 1 Wrong : 0.25

The ingredients that makes up the baking powder are:

Options :

- ☐ Only  $\text{NaHCO}_3$
- ☐  $\text{NaHCO}_3$  and Starch
- ☐  $\text{NaHCO}_3$ , Starch and  $\text{NaAl}(\text{SO}_4)_2$
- ☒  $\text{NaHCO}_3$ , Starch,  $\text{NaAl}(\text{SO}_4)_2$  and  $\text{Ca}(\text{H}_2\text{PO}_4)_2$

Question Number : 159 Question Id : 1679437390 Question Type : MCQ Option Shuffling : Yes Display Question Number : Yes  
Single Line Question Option : No Option Orientation : Vertical

Correct : 1 Wrong : 0.25

Metallic crystal structure of calcium is:

Options :

- ☒ Face centered cubic
- ☐ Hexagonal close packing
- ☐ Simple cubic
- ☐ Body centered cubic

Question Number : 160 Question Id : 1679437391 Question Type : MCQ Option Shuffling : Yes Display Question Number : Yes  
Single Line Question Option : No Option Orientation : Vertical

Correct : 1 Wrong : 0.25

Major cation in the intracellular fluid in animals is:

Options :

- ☐ Sodium

✔ Potassium

✘ Calcium

✘ Magnesium

Subject Related

Group Number :	9
Group Id :	167943155
Group Maximum Duration :	0
Group Minimum Duration :	0
Revisit allowed for view? :	No
Revisit allowed for edit? :	No
Break time:	0
Group Marks:	20

Subject Related

Section Id :	167943214
Section Number :	1
Section type :	Online
Mandatory or Optional:	Mandatory
Number of Questions:	20
Number of Questions to be attempted:	20
Section Marks:	20
Display Number Panel:	Yes
Group All Questions:	No

Sub-Section Number:	1
Sub-Section Id:	167943431
Question Shuffling Allowed :	Yes

Question Number : 161 Question Id : 1679437392 Question Type : MCQ Option Shuffling : Yes Display Question Number : Yes  
Single Line Question Option : No Option Orientation : Vertical

Correct : 1 Wrong : 0.25

Calamine is the ore of:

Options :

✘ Al

✘ Ca

✘ Fe

✔ Zn

Question Number : 162 Question Id : 1679437393 Question Type : MCQ Option Shuffling : Yes Display Question Number : Yes  
Single Line Question Option : No Option Orientation : Vertical

Correct : 1 Wrong : 0.25

Which of the following alcohols cannot be oxidised to a carbonyl compound?

Options :

- ☐ n-butyl alcohol
- ☐ Sec-butyl alcohol
- ☒ Ter-butyl alcohol
- ☐ 1-pentanol

Question Number : 163 Question Id : 1679437394 Question Type : MCQ Option Shuffling : Yes Display Question Number : Yes  
Single Line Question Option : No Option Orientation : Vertical

Correct : 1 Wrong : 0.25

During conversion of alcohol to alkyl halide, which of the below is correct?

Options :

- ☐  $1^\circ > 2^\circ > 3^\circ$
- ☒  $3^\circ > 2^\circ > 1^\circ$
- ☐  $2^\circ > 3^\circ > 1^\circ$
- ☐  $2^\circ > 1^\circ > 3^\circ$

Question Number : 164 Question Id : 1679437395 Question Type : MCQ Option Shuffling : Yes Display Question Number : Yes  
Single Line Question Option : No Option Orientation : Vertical

Correct : 1 Wrong : 0.25

By using  $\text{SOCl}_2$ , alcohols are converted into:

Options :

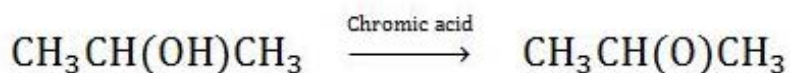
- ☒ Alkyl halides
- ☐ Alkanes
- ☐ Alkenes
- ☐ Carboxylic acids

Question Number : 165 Question Id : 1679437396 Question Type : MCQ Option Shuffling : Yes Display Question Number : Yes  
Single Line Question Option : No Option Orientation : Vertical

Correct : 1 Wrong : 0.25



Consider the below reaction.



This reaction is an example of:

Options :

- ☒ Oxidation
- ☐ Reduction
- ☐ Disproportionation
- ☐ Redox reaction

Question Number : 166 Question Id : 1679437397 Question Type : MCQ Option Shuffling : Yes Display Question Number : Yes  
Single Line Question Option : No Option Orientation : Vertical  
Correct : 1 Wrong : 0.25

The compound Nonactin binds to which metal ion?

Options :

- ☒  $\text{K}^+$
- ☐  $\text{Na}^+$
- ☐  $\text{Mg}^{+2}$
- ☐  $\text{Ca}^{+2}$

Question Number : 167 Question Id : 1679437398 Question Type : MCQ Option Shuffling : Yes Display Question Number : Yes  
Single Line Question Option : No Option Orientation : Vertical  
Correct : 1 Wrong : 0.25

The relative rate of dehydration of alcohols is given by:

Options :

- ☐  $1^\circ > 2^\circ > 3^\circ$
- ☒  $3^\circ > 2^\circ > 1^\circ$
- ☐  $2^\circ > 3^\circ > 1^\circ$
- ☐  $2^\circ > 1^\circ > 3^\circ$

Question Number : 168 Question Id : 1679437399 Question Type : MCQ Option Shuffling : Yes Display Question Number : Yes  
Single Line Question Option : No Option Orientation : Vertical

Correct : 1 Wrong : 0.25

Stereochemistry of  $\text{SN}_2$  reaction involves:

Options :

- ☐ Retention
- ☒ Inversion
- ☐ Racimisation with retention
- ☐ Racimisation with inversion

Question Number : 169 Question Id : 1679437400 Question Type : MCQ Option Shuffling : Yes Display Question Number : Yes  
Single Line Question Option : No Option Orientation : Vertical

Correct : 1 Wrong : 0.25

For an  $\text{E}_2$  reaction, which of the following is correct?

Options :

- ☐  $\text{R-Br} < \text{R-I} < \text{R-Cl}$
- ☐  $\text{R-Cl} < \text{R-I} < \text{R-Br}$
- ☒  $\text{R-Cl} < \text{R-Br} < \text{R-I}$
- ☐  $\text{R-Cl} > \text{R-Br} > \text{R-I}$

Question Number : 170 Question Id : 1679437401 Question Type : MCQ Option Shuffling : Yes Display Question Number : Yes  
Single Line Question Option : No Option Orientation : Vertical

Correct : 1 Wrong : 0.25

The transition state of  $\text{SN}_2$  reaction has:

Options :

- ☐ Linear structure
- ☒ Carbon tetrahedral structure
- ☐ Normal tetrahedral structure
- ☐ Square planar structure

Question Number : 171 Question Id : 1679437402 Question Type : MCQ Option Shuffling : Yes Display Question Number : Yes  
Single Line Question Option : No Option Orientation : Vertical

Correct : 1 Wrong : 0.25

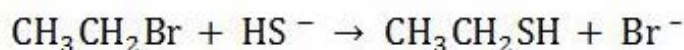
$\text{SN}_2$  and  $\text{SN}_1$  reactions follow:

Options :

- ☒ Second and first order
- ☐ First and second order
- ☐ Both follow second order
- ☐ Both follow first order

Question Number : 172 Question Id : 1679437403 Question Type : MCQ Option Shuffling : Yes Display Question Number : Yes  
Single Line Question Option : No Option Orientation : Vertical  
Correct : 1 Wrong : 0.25

Which of following reaction names is suitable for the below reaction?



Options :

- ☐  $\text{SN}_1$  reaction
- ☒  $\text{SN}_2$  reaction
- ☐  $\text{SN}_i$  reaction
- ☐  $\text{SN}_{\text{ar}}$  reaction

Question Number : 173 Question Id : 1679437404 Question Type : MCQ Option Shuffling : Yes Display Question Number : Yes  
Single Line Question Option : No Option Orientation : Vertical  
Correct : 1 Wrong : 0.25

Which of the following statements is correct?

Options :

- ☐ Chlorination is more selective than bromination
- ☒ Bromination is more selective than Chlorination
- ☐ Both are equally selective
- ☐ Bromination is less selective

Question Number : 174 Question Id : 1679437405 Question Type : MCQ Option Shuffling : Yes Display Question Number : Yes  
Single Line Question Option : No Option Orientation : Vertical  
Correct : 1 Wrong : 0.25

$\text{E}_2$  reactions are:

Options :

- ☐ Stereo selective
- ☐ Stereo specific
- ☐ Syn eliminations
- ☒ Stereoselective and anti-eliminations

Question Number : 175 Question Id : 1679437406 Question Type : MCQ Option Shuffling : Yes Display Question Number : Yes  
Single Line Question Option : No Option Orientation : Vertical

Correct : 1 Wrong : 0.25

Which of the following is an antibiotic?

Options :

- ☒ Amoxycillin
- ☐ Rantidin
- ☐ Dolo
- ☐ Furosemide

Question Number : 176 Question Id : 1679437407 Question Type : MCQ Option Shuffling : Yes Display Question Number : Yes  
Single Line Question Option : No Option Orientation : Vertical

Correct : 1 Wrong : 0.25

Morphine consists of:

Options :

- ☐ Tertiary amine
- ☐ Tertiary carbon
- ☐ Quaternary carbon
- ☒ Tertiary amine and Quaternary carbon

Question Number : 177 Question Id : 1679437408 Question Type : MCQ Option Shuffling : Yes Display Question Number : Yes  
Single Line Question Option : No Option Orientation : Vertical

Correct : 1 Wrong : 0.25

Which of following compounds shows octahedral geometry?

Options :

- ☐  $\text{XeF}_2$

✖  $\text{XeF}_4$

✖  $\text{XeO}_3$

✔  $\text{SF}_6$

Question Number : 178 Question Id : 1679437409 Question Type : MCQ Option Shuffling : Yes Display Question Number : Yes  
Single Line Question Option : No Option Orientation : Vertical

Correct : 1 Wrong : 0.25

What is the total number of lone pairs in  $\text{IF}_5$  molecule?

Options :

✖ 0

✔ 1

✖ 2

✖ 3

Question Number : 179 Question Id : 1679437410 Question Type : MCQ Option Shuffling : Yes Display Question Number : Yes  
Single Line Question Option : No Option Orientation : Vertical

Correct : 1 Wrong : 0.25

$\text{sp}^3\text{d}^2$  hybridisation is seen in:

Options :

✖  $\text{BrCl}_3$

✖  $\text{BrF}$

✔  $\text{ICl}_5$

✖  $\text{ClF}_3$

Question Number : 180 Question Id : 1679437411 Question Type : MCQ Option Shuffling : Yes Display Question Number : Yes  
Single Line Question Option : No Option Orientation : Vertical

Correct : 1 Wrong : 0.25

The total number of elements present in FCC and BCC crystal systems, respectively are:

Options :

✖ 2 and 3

✖ 3 and 4



✔ 4 and 2

✘ 2 and 4

Subject Related	
Group Number :	10
Group Id :	167943156
Group Maximum Duration :	0
Group Minimum Duration :	0
Revisit allowed for view? :	No
Revisit allowed for edit? :	No
Break time:	0
Group Marks:	20

Subject Related	
Section Id :	167943215
Section Number :	1
Section type :	Online
Mandatory or Optional:	Mandatory
Number of Questions:	20
Number of Questions to be attempted:	20
Section Marks:	20
Display Number Panel:	Yes
Group All Questions:	No

Sub-Section Number:	1
Sub-Section Id:	167943432
Question Shuffling Allowed :	Yes

Question Number : 181 Question Id : 1679437412 Question Type : MCQ Option Shuffling : Yes Display Question Number : Yes  
Single Line Question Option : No Option Orientation : Vertical

Correct : 1 Wrong : 0.25

If interplanar distance is  $4\text{ \AA}$ , the x-rays of wavelength  $4\text{ \AA}$  are diffracted and is known as first order reflection. Then calculate the angle.

Options :

✔  $30^\circ$

✘  $45^\circ$

✘  $60^\circ$

✘  $90^\circ$

Question Number : 182 Question Id : 1679437413 Question Type : MCQ Option Shuffling : Yes Display Question Number : Yes  
Single Line Question Option : No Option Orientation : Vertical

Correct : 1 Wrong : 0.25

The donor band close to \_\_\_\_\_ and acceptor band close to \_\_\_\_\_ are found in n and p type semiconductors respectively.

Options :

✗ conduction band, conduction band

✓ conduction band, valence band

✗ valence band, conduction band

✗ valence band, valence band

Question Number : 183 Question Id : 1679437414 Question Type : MCQ Option Shuffling : Yes Display Question Number : Yes  
Single Line Question Option : No Option Orientation : Vertical

Correct : 1 Wrong : 0.25

Calculate the Boyle temperature of  $\text{CO}_2$  gas, given that van der Waal constants are  $a = 4$  and  $b = 2$ .

Options :

✗ R

✗  $\frac{R}{2}$

✗ 2R

✓  $\frac{2}{R}$

Question Number : 184 Question Id : 1679437415 Question Type : MCQ Option Shuffling : Yes Display Question Number : Yes  
Single Line Question Option : No Option Orientation : Vertical

Correct : 1 Wrong : 0.25

The force responsible for the contraction of surface of liquid is:

Options :

✗ Vapour pressure

✓ Surface tension

✗ Surface energy

✗ Capillary force

Question Number : 185 Question Id : 1679437416 Question Type : MCQ Option Shuffling : Yes Display Question Number : Yes  
Single Line Question Option : No Option Orientation : Vertical

Correct : 1 Wrong : 0.25

The most probable kinetic energy, per molecule and per mole, respectively, is given by:

Options :

☒  $\frac{KT}{2}$  and  $\frac{RT}{2}$

☐  $\frac{RT}{2}$  and  $\frac{KT}{2}$

☐  $\frac{3}{2}RT$  and  $\frac{KT}{2}$

☐  $\frac{RT}{2}$  and  $\frac{3}{2}RT$

Question Number : 186 Question Id : 1679437417 Question Type : MCQ Option Shuffling : Yes Display Question Number : Yes  
Single Line Question Option : No Option Orientation : Vertical

Correct : 1 Wrong : 0.25

The v-shaped graph represents conductometric titration of:

Options :

☐ Strong acid vs weak base

☒ Strong acid vs strong base

☐ Weak acid vs weak base

☐ Strong acid & weak acid vs weak base

Question Number : 187 Question Id : 1679437418 Question Type : MCQ Option Shuffling : Yes Display Question Number : Yes  
Single Line Question Option : No Option Orientation : Vertical

Correct : 1 Wrong : 0.25

Find the activity coefficient of  $BaCl_2$ :

Options :

☐  $(\gamma_{\pm} m)^2$

☐  $2 \gamma_{\pm}^3 m^3$

☐  $3 \gamma_{\pm}^3 m^3$

☒  $4 \gamma_{\pm}^3 m^3$

Question Number : 188 Question Id : 1679437419 Question Type : MCQ Option Shuffling : Yes Display Question Number : Yes  
Single Line Question Option : No Option Orientation : Vertical

Correct : 1 Wrong : 0.25

What is the oxidation number of chromium in potassium dichromate?

Options :

☐ +2

☐ +3

☒ +6

☐ +12

Question Number : 189 Question Id : 1679437420 Question Type : MCQ Option Shuffling : Yes Display Question Number : Yes  
Single Line Question Option : No Option Orientation : Vertical

Correct : 1 Wrong : 0.25

Calculate the limiting value of molar conductance when degree of ionisation is 2.02 and molar conductance is  $4.04 \text{ Sm}^2 \text{ mole}^{-1}$  at  $25^\circ\text{C}$ .

Options :

☐  $2 \text{ Sm}^{-2} \text{ mole}^{-1}$

☒  $2 \text{ Sm}^2 \text{ mole}^{-1}$

☐  $\frac{1}{2} \text{ Sm}^2 \text{ mole}^{-1}$

☐  $\frac{1}{2} \text{ Sm}^{-2} \text{ mole}^{-1}$

Question Number : 190 Question Id : 1679437421 Question Type : MCQ Option Shuffling : Yes Display Question Number : Yes  
Single Line Question Option : No Option Orientation : Vertical

Correct : 1 Wrong : 0.25

$2 \text{ N}_2\text{O}_5 \rightleftharpoons 4 \text{ NO}_2 + \text{O}_2$  reaction is what type of reaction?

Options :

☐ Oxidation

☐ Reduction

☒ Redox reaction

☐ Com proportion

Question Number : 191 Question Id : 1679437422 Question Type : MCQ Option Shuffling : Yes Display Question Number : Yes  
Single Line Question Option : No Option Orientation : Vertical

Correct : 1 Wrong : 0.25

The two phenomenon associated with Debye-Hückel theory are:

Options :

- ☐ Relaxation and asymmetric effect
- ☐ Mesomeric and asymmetric effect
- ☐ Mesomeric and relaxation effect
- ☒ Relaxation effect and electrophoretic effect

Question Number : 192 Question Id : 1679437423 Question Type : MCQ Option Shuffling : Yes Display Question Number : Yes  
Single Line Question Option : No Option Orientation : Vertical

Correct : 1 Wrong : 0.25

Which is the weak electrolyte among the below?

Options :

- ☐ HBr
- ☐ HI
- ☒ HF
- ☐ HCl

Question Number : 193 Question Id : 1679437424 Question Type : MCQ Option Shuffling : Yes Display Question Number : Yes  
Single Line Question Option : No Option Orientation : Vertical

Correct : 1 Wrong : 0.25

Using MOT, calculate bond order for  $O_2^+$  ion.

Options :

- ☐  $1\frac{1}{2}$
- ☒  $2\frac{1}{2}$
- ☐ 3
- ☐ 2

Question Number : 194 Question Id : 1679437425 Question Type : MCQ Option Shuffling : Yes Display Question Number : Yes  
Single Line Question Option : No Option Orientation : Vertical



Correct : 1 Wrong : 0.25

Dipole moment is maximum in:

Options :

✗ HI

✗ HBr

✗ HCl

✓ HF

Question Number : 195 Question Id : 1679437426 Question Type : MCQ Option Shuffling : Yes Display Question Number : Yes  
Single Line Question Option : No Option Orientation : Vertical

Correct : 1 Wrong : 0.25

What is the dipole moment  $\mu$  when  $\theta$  is bond angle and  $m$  is bond moment?

Options :

✓  $\mu = m \cos \theta$

✗  $\mu = 2m \cos \theta$

✗  $\mu = m \frac{\cos \theta}{2}$

✗  $\mu = 4m \cos \theta$

Question Number : 196 Question Id : 1679437427 Question Type : MCQ Option Shuffling : Yes Display Question Number : Yes  
Single Line Question Option : No Option Orientation : Vertical

Correct : 1 Wrong : 0.25

Which of the following conversion, product bond order increases compared to reactant bond order?

Options :

✓  $N_2 \rightarrow N_2^+$

✗  $O_2 \rightarrow O_2^+$

✗  $NO \rightarrow NO^+$

✗  $NO \rightarrow NO^-$

Question Number : 197 Question Id : 1679437428 Question Type : MCQ Option Shuffling : Yes Display Question Number : Yes  
Single Line Question Option : No Option Orientation : Vertical

Correct : 1 Wrong : 0.25

The  $d^2sp^3$  hybridisation shows which structure?

Options :

✓ Octahedral

✗ Square planar

✗ Trigonal planar

✗ Tetrahedral

Question Number : 198 Question Id : 1679437429 Question Type : MCQ Option Shuffling : Yes Display Question Number : Yes  
Single Line Question Option : No Option Orientation : Vertical

Correct : 1 Wrong : 0.25

Shape of  $\text{Mg}[\text{Th}(\text{NO}_3)_6]$  is:

Options :

✗ Square antiprism

✗ Octahedral

✓ Icosahedral

✗ Pentagonal bipyramidal

Question Number : 199 Question Id : 1679437430 Question Type : MCQ Option Shuffling : Yes Display Question Number : Yes  
Single Line Question Option : No Option Orientation : Vertical

Correct : 1 Wrong : 0.25

Which of the following metal carbonyls doesn't exhibit EAN rule?

Options :

✗  $\text{Fe}(\text{CO})_5$

✓  $\text{Mn}(\text{CO})_5$

✗  $\text{Cr}(\text{CO})_6$

✗  $\text{Ni}(\text{CO})_4$

Question Number : 200 Question Id : 1679437431 Question Type : MCQ Option Shuffling : Yes Display Question Number : Yes  
Single Line Question Option : No Option Orientation : Vertical

Correct : 1 Wrong : 0.25

Cis isomer and trans isomers are examples of \_\_\_\_\_.

Options :

✖ Ionisation isomerism

✔ Geometrical isomerism

✖ Hydrated isomerism

✖ Posional isomerism

Subject Related

Group Number :	11
Group Id :	167943157
Group Maximum Duration :	0
Group Minimum Duration :	0
Revisit allowed for view? :	No
Revisit allowed for edit? :	No
Break time:	0
Group Marks:	20

Subject Related

Section Id :	167943216
Section Number :	1
Section type :	Online
Mandatory or Optional:	Mandatory
Number of Questions:	20
Number of Questions to be attempted:	20
Section Marks:	20
Display Number Panel:	Yes
Group All Questions:	No

Sub-Section Number:	1
Sub-Section Id:	167943433
Question Shuffling Allowed :	Yes

Question Number : 201 Question Id : 1679437432 Question Type : MCQ Option Shuffling : Yes Display Question Number : Yes  
Single Line Question Option : No Option Orientation : Vertical  
Correct : 1 Wrong : 0.25

How many nodal planes are contained in  $\Pi^*$  molecular orbital?

Options :

✖ 1

✔ 2

✗ 3

✗ 4

Question Number : 202 Question Id : 1679437433 Question Type : MCQ Option Shuffling : Yes Display Question Number : Yes  
Single Line Question Option : No Option Orientation : Vertical

Correct : 1 Wrong : 0.25

Which of following compounds is formed by reaction of

$(\text{CH}_3)_2\text{C} = \text{CH}_2$  with HBr?

Options :

✓  $(\text{CH}_3)_2\text{CH} - \text{CH}_2 - \text{Br}$

✗  $\text{CH}_3 - \text{CH}(\text{CH}_3)(\text{Br}) - \text{CH}_3$

✗  $(\text{CH}_3)_2\text{CH} - \text{CH}_2 - \text{Br}$  and  $\text{CH}_3 - \text{CH}(\text{CH}_3)(\text{Br}) - \text{CH}_3$

✗  $\text{CH}_3 - \text{CH}_2 - \text{CH}_2 - \text{CH}_2 - \text{Br}$

Question Number : 203 Question Id : 1679437434 Question Type : MCQ Option Shuffling : Yes Display Question Number : Yes  
Single Line Question Option : No Option Orientation : Vertical

Correct : 1 Wrong : 0.25

Which of the following salts has more conductivity?

Options :

✗ LiCl

✓  $\text{CaCl}_2$

✗  $\text{LiCl}_3$

✗ LiCl and  $\text{LiCl}_3$

Question Number : 204 Question Id : 1679437435 Question Type : MCQ Option Shuffling : Yes Display Question Number : Yes  
Single Line Question Option : No Option Orientation : Vertical

Correct : 1 Wrong : 0.25

How many charges are present in  $\text{CoCl}_3 \cdot 3\text{NH}_3$  compound?

Options :

✗ 4

✗ 3

✖ 1

✔ 0

Question Number : 205 Question Id : 1679437436 Question Type : MCQ Option Shuffling : Yes Display Question Number : Yes  
Single Line Question Option : No Option Orientation : Vertical

Correct : 1 Wrong : 0.25

In octahedral complexes, the difference in energy between two d-levels is?

Options :

✖ 1 Dq

✔ 10 Dq

✖ 100 Dq

✖ 1000 Dq

Question Number : 206 Question Id : 1679437437 Question Type : MCQ Option Shuffling : Yes Display Question Number : Yes  
Single Line Question Option : No Option Orientation : Vertical

Correct : 1 Wrong : 0.25

Which of the following is weak field ligand?

Options :

✖  $\text{CN}^-$

✔  $\text{F}^-$

✖ CO

✖  $\text{NO}_2^-$

Question Number : 207 Question Id : 1679437438 Question Type : MCQ Option Shuffling : Yes Display Question Number : Yes  
Single Line Question Option : No Option Orientation : Vertical

Correct : 1 Wrong : 0.25

The structure of  $(\text{NH}_3)_3\text{CrO}_4$  is:

Options :

✖ Octahedral

✖ Tetrahedral

✖ Trigonal bipyramidal



✓ Pentagonal bipyramidal

Question Number : 208 Question Id : 1679437439 Question Type : MCQ Option Shuffling : Yes Display Question Number : Yes  
Single Line Question Option : No Option Orientation : Vertical

Correct : 1 Wrong : 0.25

Cis and trans isomers are possible in:

Options :

✗  $[\text{Cr}(\text{NH}_3)_6\text{Cl}]^{2+}$

✓  $[\text{Cr}(\text{NH}_3)_6]^{3+}$

✗  $[\text{Cr}(\text{NH}_3)_4\text{Cl}_2]^+$

✗  $[\text{Cr}(\text{NH}_3)_3\text{Cl}_3]$

Question Number : 209 Question Id : 1679437440 Question Type : MCQ Option Shuffling : Yes Display Question Number : Yes  
Single Line Question Option : No Option Orientation : Vertical

Correct : 1 Wrong : 0.25

Which of the following statements is correct?

Options :

✓ 5f electrons of the actinides interact much more with ligands than do the 4f electrons of the lanthanides

✗ 4f electrons of the lanthanides interact much more with ligands than do the 5f electrons of the actinides

✗ 5f electrons of the actinides interact much more with ligands than do the 4f electrons of the lanthanides; and 4f electrons of the lanthanides interact much more with ligands than do the 5f electrons of the actinides

✗ None of these options

Question Number : 210 Question Id : 1679437441 Question Type : MCQ Option Shuffling : Yes Display Question Number : Yes  
Single Line Question Option : No Option Orientation : Vertical

Correct : 1 Wrong : 0.25

Which of the following is the high spin complex?

Options :

✗  $[\text{Mn}(\text{CN})_6]^{4-}$

✗  $[\text{Fe}(\text{CN})_6]^{3-}$

✗  $[\text{Fe}(\text{bpy})_3]^{3+}$

✓  $[\text{FeCl}_6]^{3-}$

Question Number : 211 Question Id : 1679437442 Question Type : MCQ Option Shuffling : Yes Display Question Number : Yes  
Single Line Question Option : No Option Orientation : Vertical

Correct : 1 Wrong : 0.25

In basic solution,  $\text{Cl}_2$  disproportionates to?

Options :

✗  $\text{Cl}$  and  $\text{Cl}^-$

✓  $\text{ClO}$  and  $\text{Cl}^-$

✗  $\text{ClO}^-$  and  $\text{ClO}_2^-$

✗ Both  $\text{ClO}$  and  $\text{Cl}^-$  and  $\text{ClO}^-$  and  $\text{ClO}_2^-$

Question Number : 212 Question Id : 1679437443 Question Type : MCQ Option Shuffling : Yes Display Question Number : Yes  
Single Line Question Option : No Option Orientation : Vertical

Correct : 1 Wrong : 0.25

What does a bacteriostatic drug do?

Options :

✗ It kills bacteria

✗ It increases the growth of bacteria

✓ It inhibits the growth of bacteria

✗ It does not react with bacteria

Question Number : 213 Question Id : 1679437444 Question Type : MCQ Option Shuffling : Yes Display Question Number : Yes  
Single Line Question Option : No Option Orientation : Vertical

Correct : 1 Wrong : 0.25

Antiulcer agents among the following is/are:

Options :

✗ Paracetamol

✗ Zantac

✓ Both Paracetamol and Zantac

✗ Tolbutamide

Question Number : 214 Question Id : 1679437445 Question Type : MCQ Option Shuffling : Yes Display Question Number : Yes  
Single Line Question Option : No Option Orientation : Vertical

Correct : 1 Wrong : 0.25

In group II B, which metal has greater tendency to form coordination compound?

Options :

- ☐ Zn
- ☐ Cd
- ☒ Hg
- ☐ Both Zn and Cd

Question Number : 215 Question Id : 1679437446 Question Type : MCQ Option Shuffling : Yes Display Question Number : Yes  
Single Line Question Option : No Option Orientation : Vertical

Correct : 1 Wrong : 0.25

Which metals of the following have the greatest tendency to form metal clusters?

Options :

- ☐ V, Nb, Ta
- ☐ Zr, V, Nb
- ☒ Nb, Mo, Tc
- ☐ Cr, Mo, Tc

Question Number : 216 Question Id : 1679437447 Question Type : MCQ Option Shuffling : Yes Display Question Number : Yes  
Single Line Question Option : No Option Orientation : Vertical

Correct : 1 Wrong : 0.25

Which orbit of the below forms the  $\delta$ -bond?

Options :

- ☒ dxy
- ☐ dyz
- ☐  $dz^2$
- ☐  $dx^2 - y^2$

Question Number : 217 Question Id : 1679437448 Question Type : MCQ Option Shuffling : Yes Display Question Number : Yes  
Single Line Question Option : No Option Orientation : Vertical

Correct : 1 Wrong : 0.25

Which of the following is isoelectric species?

Options :

- ☐  $\text{Sn}^{4-}, \text{Se}_9^{5+}$
- ☒  $\text{Sn}_9^{4-}, \text{Bi}_9^{5+}$
- ☐  $\text{Se}_9^{5+}, \text{Bi}_9^{5+}$
- ☐  $\text{Sn}_9^{4-}, \text{Al}_9^{4-}$

Question Number : 218 Question Id : 1679437449 Question Type : MCQ Option Shuffling : Yes Display Question Number : Yes  
Single Line Question Option : No Option Orientation : Vertical

Correct : 1 Wrong : 0.25

Pale blue coloured  $[\text{Cu}(\text{H}_2\text{O})_6]^{2+}$  ion reacts with aqueous ammonia solution, to form which coloured ion?

Options :

- ☐ Green coloured ion
- ☐ Pale blue coloured ion
- ☒ Deep blue coloured ion
- ☐ Colourless

Question Number : 219 Question Id : 1679437450 Question Type : MCQ Option Shuffling : Yes Display Question Number : Yes  
Single Line Question Option : No Option Orientation : Vertical

Correct : 1 Wrong : 0.25

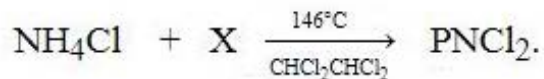
Which of the following is the correct statement?

Options :

- ☐ Tetrahedral complex can exist only in one form
- ☐ Square planar complex can exist in two isomeric forms
- ☒ Tetrahedral complex can exist only in one form and Square planar complex can exist in two isomeric forms
- ☐ None of these

Question Number : 220 Question Id : 1679437451 Question Type : MCQ Option Shuffling : Yes Display Question Number : Yes  
Single Line Question Option : No Option Orientation : Vertical

Correct : 1 Wrong : 0.25



Here X = ?

Options :

✗  $\text{PCl}_3$

✓  $\text{PCl}_5$

✗  $\text{POCl}_3$

✗  $\text{H}_3\text{PO}_4$

Subject Related

Group Number :	12
Group Id :	167943158
Group Maximum Duration :	0
Group Minimum Duration :	0
Revisit allowed for view? :	No
Revisit allowed for edit? :	No
Break time:	0
Group Marks:	20

Subject Related

Section Id :	167943217
Section Number :	1
Section type :	Online
Mandatory or Optional:	Mandatory
Number of Questions:	20
Number of Questions to be attempted:	20
Section Marks:	20
Display Number Panel:	Yes
Group All Questions:	No

Sub-Section Number:	1
Sub-Section Id:	167943434
Question Shuffling Allowed :	Yes

Question Number : 221 Question Id : 1679437452 Question Type : MCQ Option Shuffling : Yes Display Question Number : Yes  
Single Line Question Option : No Option Orientation : Vertical

Correct : 1 Wrong : 0.25

Which halogen forms a heptafluoride in interhalogen?



Options :

✗ Cl

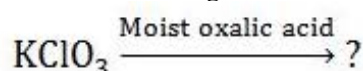
✗ Br

✓ I

✗ At

Question Number : 222 Question Id : 1679437453 Question Type : MCQ Option Shuffling : Yes Display Question Number : Yes  
Single Line Question Option : No Option Orientation : Vertical

Correct : 1 Wrong : 0.25



Options :

✗  $\text{K}_2\text{C}_2\text{O}_4 + \text{ClO}_4 + \text{KCl}$

✗  $\text{KCl} + \text{ClO}_2$

✓  $\text{K}_2\text{C}_2\text{O}_4 + \text{ClO}_2 + \text{CO}_2$

✗  $\text{KCl} + \text{ClO}_2 + \text{K}_2\text{C}_2\text{O}_4$

Question Number : 223 Question Id : 1679437454 Question Type : MCQ Option Shuffling : Yes Display Question Number : Yes  
Single Line Question Option : No Option Orientation : Vertical

Correct : 1 Wrong : 0.25

Thiocyanogen  $(\text{SCN})_2$  is stable only at:

Options :

✗ High temperature

✓ Low temperature

✗ Room temperature

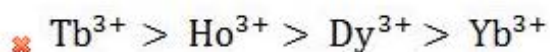
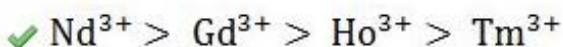
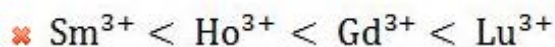
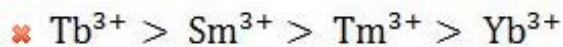
✗ Very high temperature

Question Number : 224 Question Id : 1679437455 Question Type : MCQ Option Shuffling : Yes Display Question Number : Yes  
Single Line Question Option : No Option Orientation : Vertical

Correct : 1 Wrong : 0.25

The correct order of ionic radius of lanthanides is:

Options :

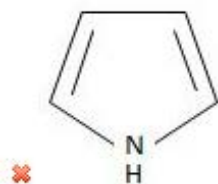
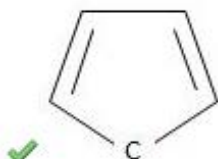
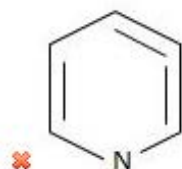
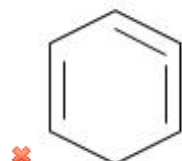


Question Number : 225 Question Id : 1679437456 Question Type : MCQ Option Shuffling : Yes Display Question Number : Yes  
Single Line Question Option : No Option Orientation : Vertical

Correct : 1 Wrong : 0.25

Which of the following is not an aromatic compound?

Options :



Question Number : 226 Question Id : 1679437457 Question Type : MCQ Option Shuffling : Yes Display Question Number : Yes  
Single Line Question Option : No Option Orientation : Vertical

Correct : 1 Wrong : 0.25

Polluting strength of water is given by:

Options :

✗ COD in water

✓ BOD in water

- ✖ Saline content in water
- ✖ Amount of phosphates and carbonates in water

Question Number : 227 Question Id : 1679437458 Question Type : MCQ Option Shuffling : Yes Display Question Number : Yes  
Single Line Question Option : No Option Orientation : Vertical

Correct : 1 Wrong : 0.25

Which of the following methods is not used for soil protection?

Options :

- ✖ Afforestation
- ✖ Neutralisation of acid in rain by adding lime
- ✔ Uses of excess fertilisers
- ✖ Minimising use of fossil fuels

Question Number : 228 Question Id : 1679437459 Question Type : MCQ Option Shuffling : Yes Display Question Number : Yes  
Single Line Question Option : No Option Orientation : Vertical

Correct : 1 Wrong : 0.25

Which of the following is NOT a greenhouse gas?

Options :

- ✖  $\text{CH}_4$
- ✖  $\text{CO}_2$
- ✔ Helium
- ✖ Methane derivatives

Question Number : 229 Question Id : 1679437460 Question Type : MCQ Option Shuffling : Yes Display Question Number : Yes  
Single Line Question Option : No Option Orientation : Vertical

Correct : 1 Wrong : 0.25

The pH of Acid rain is:

Options :

- ✖ Between 8-9
- ✖ Below 4.5
- ✖ Below 3.5

✓ Below 5.6

Question Number : 230 Question Id : 1679437461 Question Type : MCQ Option Shuffling : Yes Display Question Number : Yes  
Single Line Question Option : No Option Orientation : Vertical

Correct : 1 Wrong : 0.25

A five-carbon ketose is known as:

Options :

✓ Pentulose

✗ Ketohehexose

✗ Arabinose

✗ Ribose

Question Number : 231 Question Id : 1679437462 Question Type : MCQ Option Shuffling : Yes Display Question Number : Yes  
Single Line Question Option : No Option Orientation : Vertical

Correct : 1 Wrong : 0.25

The change in optical rotation with time is called:

Options :

✗ Flipping

✓ Muta rotation

✗ Optical activity

✗ Internal rotation

Question Number : 232 Question Id : 1679437463 Question Type : MCQ Option Shuffling : Yes Display Question Number : Yes  
Single Line Question Option : No Option Orientation : Vertical

Correct : 1 Wrong : 0.25

The water-insoluble fraction of the disaccharide sucrose is:

Options :

✗ Amylose

✓ Amylopectin

✗ Complete sucrose

✗  $\alpha$  – linkages of sucrose

Question Number : 233 Question Id : 1679437464 Question Type : MCQ Option Shuffling : Yes Display Question Number : Yes  
Single Line Question Option : No Option Orientation : Vertical

Correct : 1 Wrong : 0.25

Which of the following is a basic amino acid?

Options :

- ☐ Tyrosine
- ☐ Alanine
- ☐ Valine
- ☒ Arginine

Question Number : 234 Question Id : 1679437465 Question Type : MCQ Option Shuffling : Yes Display Question Number : Yes  
Single Line Question Option : No Option Orientation : Vertical

Correct : 1 Wrong : 0.25

Which of the following is not an example of fibrous protein?

Options :

- ☒ Haemoglobin
- ☐ Keratin
- ☐ Fibroin
- ☐ Collogen

Question Number : 235 Question Id : 1679437466 Question Type : MCQ Option Shuffling : Yes Display Question Number : Yes  
Single Line Question Option : No Option Orientation : Vertical

Correct : 1 Wrong : 0.25

Amino acids at iso-electric point have:

Options :

- ☐ High mobility
- ☒ No electrical conductivity
- ☐ High solubility
- ☐ Unequal acid-base ionisation

Question Number : 236 Question Id : 1679437467 Question Type : MCQ Option Shuffling : Yes Display Question Number : Yes  
Single Line Question Option : No Option Orientation : Vertical

Correct : 1 Wrong : 0.25



Formation of RNA from DNA is known as:

Options :

- ☒ Transcription
- ☐ Translation
- ☐ Replication
- ☐ Polymerisation

Question Number : 237 Question Id : 1679437468 Question Type : MCQ Option Shuffling : Yes Display Question Number : Yes  
Single Line Question Option : No Option Orientation : Vertical

Correct : 1 Wrong : 0.25

Which of the following does not occur in DNA?

Options :

- ☐ Cytosine
- ☐ Guanine
- ☒ Uracil
- ☐ Thymine

Question Number : 238 Question Id : 1679437469 Question Type : MCQ Option Shuffling : Yes Display Question Number : Yes  
Single Line Question Option : No Option Orientation : Vertical

Correct : 1 Wrong : 0.25

The place of the DNA at which it interacts with macromolecules is called:

Options :

- ☐ Minor groove
- ☒ Major groove
- ☐ Base pairs
- ☐ Deoxy ribose rings

Question Number : 239 Question Id : 1679437470 Question Type : MCQ Option Shuffling : Yes Display Question Number : Yes  
Single Line Question Option : No Option Orientation : Vertical

Correct : 1 Wrong : 0.25

Which of the following rubbers is hard and brittle?

Options :

- ☐ Cis rubber
- ☒ Trans rubber
- ☐ Complete rubber
- ☐ Only at bonding sites

Question Number : 240 Question Id : 1679437471 Question Type : MCQ Option Shuffling : Yes Display Question Number : Yes  
Single Line Question Option : No Option Orientation : Vertical  
Correct : 1 Wrong : 0.25

The melamine is formed by the trimerization of which of the following compounds?

- Options :
- ☐ Urea
  - ☐ Formaldehyde
  - ☐ Polystyrene
  - ☒ Cyanamide

Subject Related	
Group Number :	13
Group Id :	167943159
Group Maximum Duration :	0
Group Minimum Duration :	0
Revisit allowed for view? :	No
Revisit allowed for edit? :	No
Break time:	0
Group Marks:	20

Subject Related	
Section Id :	167943218
Section Number :	1
Section type :	Online
Mandatory or Optional:	Mandatory
Number of Questions:	20
Number of Questions to be attempted:	20
Section Marks:	20
Display Number Panel:	Yes
Group All Questions:	No

Sub-Section Number: 1  
Sub-Section Id: 167943435  
Question Shuffling Allowed : Yes

Question Number : 241 Question Id : 1679437472 Question Type : MCQ Option Shuffling : Yes Display Question Number : Yes  
Single Line Question Option : No Option Orientation : Vertical

Correct : 1 Wrong : 0.25

Which of the following is not a fiber?

Options :

✗ Nylon 6,6

✗ Nylon 6

✓ Neoprene

✗ Myosin

Question Number : 242 Question Id : 1679437473 Question Type : MCQ Option Shuffling : Yes Display Question Number : Yes  
Single Line Question Option : No Option Orientation : Vertical

Correct : 1 Wrong : 0.25

Formaldehyde polymerises at the temperature that is:

Options :

✓ Below 100 °C

✗ Above 200 °C

✗ Between 200 - 300 °C

✗ Above 500 °C

Question Number : 243 Question Id : 1679437474 Question Type : MCQ Option Shuffling : Yes Display Question Number : Yes  
Single Line Question Option : No Option Orientation : Vertical

Correct : 1 Wrong : 0.25

The word polymer is derived originally \_\_\_\_\_ from word.

Options :

✓ Greek

✗ French

✗ English

✗ Swiss

Question Number : 244 Question Id : 1679437475 Question Type : MCQ Option Shuffling : Yes Display Question Number : Yes  
Single Line Question Option : No Option Orientation : Vertical

Correct : 1 Wrong : 0.25

Which of the following is a co-polymer?

Options :

- ☐ PVC
- ☐ Polyethylene
- ☐ Melamine
- ☒ Bakelite

Question Number : 245 Question Id : 1679437476 Question Type : MCQ Option Shuffling : Yes Display Question Number : Yes  
Single Line Question Option : No Option Orientation : Vertical

Correct : 1 Wrong : 0.25

Ti ion in Ziegler Natta Catalyst is assumed to be in which oxidation state?

Options :

- ☐ I
- ☐ II
- ☒ III
- ☐ Zero

Question Number : 246 Question Id : 1679437477 Question Type : MCQ Option Shuffling : Yes Display Question Number : Yes  
Single Line Question Option : No Option Orientation : Vertical

Correct : 1 Wrong : 0.25

Gabriel phthalimide reaction is used for preparation of:

Options :

- ☒ Primary amines
- ☐ Secondary amines
- ☐ Tertiary amines
- ☐ Quaternary amines

Question Number : 247 Question Id : 1679437478 Question Type : MCQ Option Shuffling : Yes Display Question Number : Yes  
Single Line Question Option : No Option Orientation : Vertical

Correct : 1 Wrong : 0.25

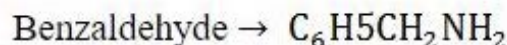
Which of the following methods is not used for separation of mixture of amines?

Options :

- ☐ Fractional distillation
- ☐ Hoffmann method
- ☐ Hinsberg method
- ☒ Curtius method

Question Number : 248 Question Id : 1679437479 Question Type : MCQ Option Shuffling : Yes Display Question Number : Yes  
Single Line Question Option : No Option Orientation : Vertical

Correct : 1 Wrong : 0.25



Which of the following reagent is used for the conversion of above reaction?

Options :

- ☐  $PBr_3$
- ☒  $NH_3, H_2, Ni$
- ☐  $K_2Cr_2O_7$
- ☐  $NaOBr$

Question Number : 249 Question Id : 1679437480 Question Type : MCQ Option Shuffling : Yes Display Question Number : Yes  
Single Line Question Option : No Option Orientation : Vertical

Correct : 1 Wrong : 0.25

Liebermann nitroso reaction is used for testing:

Options :

- ☐ Primary amines
- ☒ Secondary amines
- ☐ Tertiary amines
- ☐ Quaternary amines

Question Number : 250 Question Id : 1679437481 Question Type : MCQ Option Shuffling : Yes Display Question Number : Yes  
Single Line Question Option : No Option Orientation : Vertical

Correct : 1 Wrong : 0.25



The nitrogen in the Quaternary ammonium salt is:

Options :

- ☐ Square planar
- ☒ Tetrahedral
- ☐ Linear
- ☐ Bent

Question Number : 251 Question Id : 1679437482 Question Type : MCQ Option Shuffling : Yes Display Question Number : Yes  
Single Line Question Option : No Option Orientation : Vertical

Correct : 1 Wrong : 0.25

Amines have:

Options :

- ☐ High boiling points than alcohols
- ☐ High boiling points than COOH's
- ☒ High boiling points than non-polar compounds
- ☐ Non-polar nature

Question Number : 252 Question Id : 1679437483 Question Type : MCQ Option Shuffling : Yes Display Question Number : Yes  
Single Line Question Option : No Option Orientation : Vertical

Correct : 1 Wrong : 0.25

The length of C-N bonds in amines is:

Options :

- ☐ 1.23 Å
- ☐ 1.39 Å
- ☐ 1.43 Å
- ☒ 1.47 Å

Question Number : 253 Question Id : 1679437484 Question Type : MCQ Option Shuffling : Yes Display Question Number : Yes  
Single Line Question Option : No Option Orientation : Vertical

Correct : 1 Wrong : 0.25

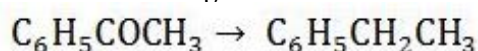
Which of the following has the highest boiling point?

Options :

- ☒ Butylamine
- ☐ Dimethyl amine
- ☐ Ethyl – methyl amine
- ☐ Isopentane

Question Number : 254 Question Id : 1679437485 Question Type : MCQ Option Shuffling : Yes Display Question Number : Yes  
Single Line Question Option : No Option Orientation : Vertical

Correct : 1 Wrong : 0.25



The above reaction can be achieved using:

Options :

- ☒  $\text{NH}_2\text{NH}_2$
- ☐  $\text{SnHCl}$
- ☐ Friedal crafts reaction
- ☐  $\text{LiAlH}_4$

Question Number : 255 Question Id : 1679437486 Question Type : MCQ Option Shuffling : Yes Display Question Number : Yes  
Single Line Question Option : No Option Orientation : Vertical

Correct : 1 Wrong : 0.25

Which of the following is not a dicarboxylic acid?

Options :

- ☐ Succinic acid
- ☐ Malonic acid
- ☐ Glutamic acid
- ☒ Butyric acid

Question Number : 256 Question Id : 1679437487 Question Type : MCQ Option Shuffling : Yes Display Question Number : Yes  
Single Line Question Option : No Option Orientation : Vertical

Correct : 1 Wrong : 0.25

Match the following.

- |                                    |                    |
|------------------------------------|--------------------|
| a) $\text{NH}_2 - \text{OH}$       | i) Semicarbazide   |
| b) $\text{NH}_2 - \text{NH}_2$     | ii) Hydrazine      |
| c) $\text{NH}_2 - \text{NHCONH}_2$ | iii) Hydroxylamine |

Options :

✓ a-iii, b-ii, c-i

✗ a-ii, b-iii, c-i

✗ a-i, b-ii, c-iii

✗ a-ii, b-i, c-iii

Question Number : 257 Question Id : 1679437488 Question Type : MCQ Option Shuffling : Yes Display Question Number : Yes  
Single Line Question Option : No Option Orientation : Vertical

Correct : 1 Wrong : 0.25

Oxidation of Tollen's reagent is done by which of the following?

Options :

✗ Cellulose

✓ Glucose

✗ Sucrose

✗ Fructose

Question Number : 258 Question Id : 1679437489 Question Type : MCQ Option Shuffling : Yes Display Question Number : Yes  
Single Line Question Option : No Option Orientation : Vertical

Correct : 1 Wrong : 0.25

The C-O bond in carboxylic acid is:

Options :

✓  $\text{sp}^2 - \text{sp}^3$  shorter

✗  $\text{sp}^2 - \text{sp}^3$  longer

✗  $\text{sp}^3 - \text{sp}^3$  shorter

✗  $\text{sp}^3 - \text{sp}^3$  longer

Question Number : 259 Question Id : 1679437490 Question Type : MCQ Option Shuffling : Yes Display Question Number : Yes  
Single Line Question Option : No Option Orientation : Vertical  
Correct : 1 Wrong : 0.25

Which of the following has highest pKa values?

Options :

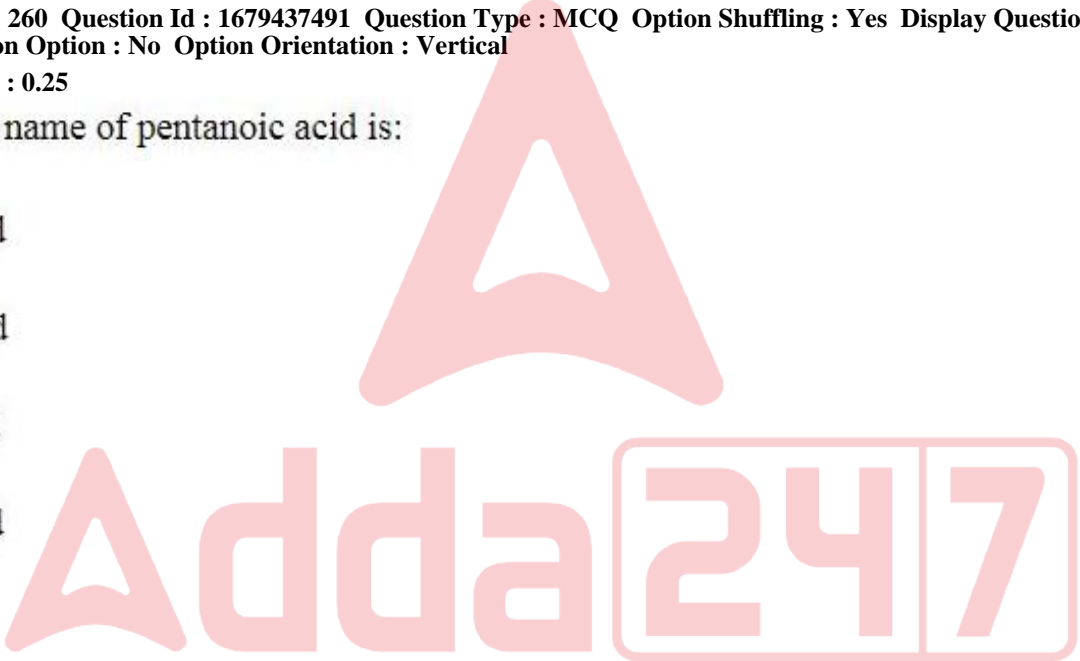
- ✓ Acetic acid
- ✗ Fluoroacetic acid
- ✗ Difluoro acetic acid
- ✗ Trifluoro acetic acid

Question Number : 260 Question Id : 1679437491 Question Type : MCQ Option Shuffling : Yes Display Question Number : Yes  
Single Line Question Option : No Option Orientation : Vertical  
Correct : 1 Wrong : 0.25

The common name of pentanoic acid is:

Options :

- ✗ Pivalic acid
- ✓ Valeric acid
- ✗ Lauric acid
- ✗ Stearic acid



Subject Related

Group Number :	14
Group Id :	167943160
Group Maximum Duration :	0
Group Minimum Duration :	0
Revisit allowed for view? :	No
Revisit allowed for edit? :	No
Break time:	0
Group Marks:	20

Subject Related

Section Id :	167943219
Section Number :	1
Section type :	Online
Mandatory or Optional:	Mandatory
Number of Questions:	20

Number of Questions to be attempted: 20  
Section Marks: 20  
Display Number Panel: Yes  
Group All Questions: No

Sub-Section Number: 1  
Sub-Section Id: 167943436  
Question Shuffling Allowed : Yes

Question Number : 261 Question Id : 1679437492 Question Type : MCQ Option Shuffling : Yes Display Question Number : Yes  
Single Line Question Option : No Option Orientation : Vertical

Correct : 1 Wrong : 0.25

Manganin is an alloy containing:

Options :

✓ Cu, Mn, Ni

✗ Zn, Cu, Mn

✗ Ni, Mn, Zn

✗ Mn, Co, Fe

Question Number : 262 Question Id : 1679437493 Question Type : MCQ Option Shuffling : Yes Display Question Number : Yes  
Single Line Question Option : No Option Orientation : Vertical

Correct : 1 Wrong : 0.25

Which is the correct chemical formula of magnetite?

Options :

✗  $\text{Mg}_2\text{O}_3$

✗  $\text{Fe}_3\text{O}_4$

✗  $\text{Fe}_2\text{O}_3$

✓  $\text{FeO(OH)}$

Question Number : 263 Question Id : 1679437494 Question Type : MCQ Option Shuffling : Yes Display Question Number : Yes  
Single Line Question Option : No Option Orientation : Vertical

Correct : 1 Wrong : 0.25

Half-filled f-shell of lanthanide ion is:

Options :

✗  $\text{Ce}^{4+}$



✓  $\text{Tb}^{4+}$

✗  $\text{Yb}^{2+}$

✗  $\text{Eu}^{3+}$

Question Number : 264 Question Id : 1679437495 Question Type : MCQ Option Shuffling : Yes Display Question Number : Yes  
Single Line Question Option : No Option Orientation : Vertical

Correct : 1 Wrong : 0.25

Which of the following ions have magnetic moment as 7.9 BM?

Options :

✗  $\text{Yb}^{2+}$

✗  $\text{Eu}^{3+}$

✓  $\text{Gd}^{3+}$

✗  $\text{Ce}^{4+}$

Question Number : 265 Question Id : 1679437496 Question Type : MCQ Option Shuffling : Yes Display Question Number : Yes  
Single Line Question Option : No Option Orientation : Vertical

Correct : 1 Wrong : 0.25

What is the correct decreasing order of the shielding effect of electrons?

Options :

✗  $f > d > p > s$

✗  $f > d > s > p$

✗  $s > d > p > f$

✓  $s > p > d > f$

Question Number : 266 Question Id : 1679437497 Question Type : MCQ Option Shuffling : Yes Display Question Number : Yes  
Single Line Question Option : No Option Orientation : Vertical

Correct : 1 Wrong : 0.25

Graphite has \_\_\_\_\_ hybridisation.

Options :

✗  $sp^3$

✓  $sp^2$

✖ sp

✖  $sp^3$  and sp

Question Number : 267 Question Id : 1679437498 Question Type : MCQ Option Shuffling : Yes Display Question Number : Yes  
Single Line Question Option : No Option Orientation : Vertical

Correct : 1 Wrong : 0.25

Which of the following has the lowest bond angle?

Options :

✖  $NH_3$

✔  $NH_4$

✖  $^+NH_4$

✖  $CH_4$

Question Number : 268 Question Id : 1679437499 Question Type : MCQ Option Shuffling : Yes Display Question Number : Yes  
Single Line Question Option : No Option Orientation : Vertical

Correct : 1 Wrong : 0.25

In monochlorination of methane, methyl radical is formed in \_\_\_\_\_

Options :

✖ Initiation step

✖ Termination step

✔ Propagation step

✖ None of these options

Question Number : 269 Question Id : 1679437500 Question Type : MCQ Option Shuffling : Yes Display Question Number : Yes  
Single Line Question Option : No Option Orientation : Vertical

Correct : 1 Wrong : 0.25

Allene must have which of the following type of hybridised carbon?

Options :

✖  $sp^3$

✖  $sp^2$

✓ sp

✗  $sp^3 d$

Question Number : 270 Question Id : 1679437501 Question Type : MCQ Option Shuffling : Yes Display Question Number : Yes  
Single Line Question Option : No Option Orientation : Vertical

Correct : 1 Wrong : 0.25

The resonance hybrid structure of benzene indicates \_\_\_\_\_ geometry.

Options :

✗ tetrahedral

✓ hexagonal

✗ pentagonal

✗ heptagonal

Question Number : 271 Question Id : 1679437502 Question Type : MCQ Option Shuffling : Yes Display Question Number : Yes  
Single Line Question Option : No Option Orientation : Vertical

Correct : 1 Wrong : 0.25

Benzene is \_\_\_\_\_.

Options :

✗ [16] Annulene

✗ [3] Annulene

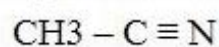
✓ [6] Annulene

✗ [18] Annulene

Question Number : 272 Question Id : 1679437503 Question Type : MCQ Option Shuffling : Yes Display Question Number : Yes  
Single Line Question Option : No Option Orientation : Vertical

Correct : 1 Wrong : 0.25

Hybridization of below compound is indicated by which option?



(a) (b) (c)

Options :

✗  $sp^3$   $sp^2$   $sp^3$

✗  $sp^3$   $sp^2$   $sp^2$

✗  $sp^3$   $sp$   $sp^2$

✓  $sp^3$   $sp$   $sp$

Question Number : 273 Question Id : 1679437504 Question Type : MCQ Option Shuffling : Yes Display Question Number : Yes  
Single Line Question Option : No Option Orientation : Vertical

Correct : 1 Wrong : 0.25

Which of the below compounds has lowest  $P^{ka}$  value?

Options :

✗  $H_3C - CH_3$

✗  $H_2C = CH_2$

✓  $HC \equiv CH$

✗  $H_3C - CH = CH_2$

Question Number : 274 Question Id : 1679437505 Question Type : MCQ Option Shuffling : Yes Display Question Number : Yes  
Single Line Question Option : No Option Orientation : Vertical

Correct : 1 Wrong : 0.25

Which reagent is used for formation of aldehyde from alcohol?

Options :

✗  $LiAlH_4$

✗  $\frac{Zn}{HCl}$

✓  $\frac{PCC}{CH_2Cl_2}$

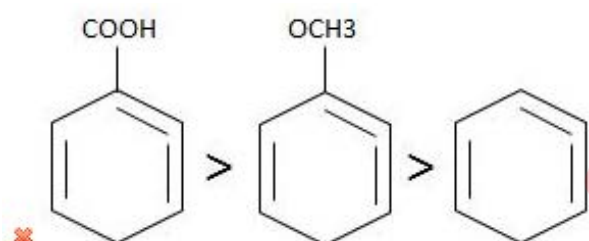
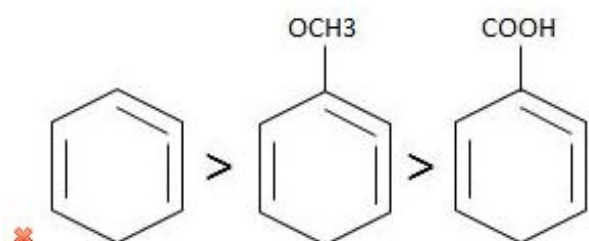
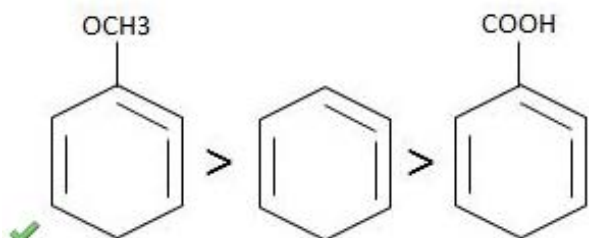
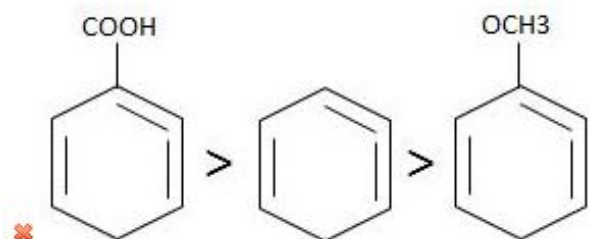
✗ Red P

Question Number : 275 Question Id : 1679437506 Question Type : MCQ Option Shuffling : Yes Display Question Number : Yes  
Single Line Question Option : No Option Orientation : Vertical

Correct : 1 Wrong : 0.25

Which of the following represents the decreasing order of the rate of electrophilic aromatic substitution?

Options :



Question Number : 276 Question Id : 1679437507 Question Type : MCQ Option Shuffling : Yes Display Question Number : Yes  
Single Line Question Option : No Option Orientation : Vertical  
Correct : 1 Wrong : 0.25

Which of the following statements is correct with regard to benzene substituent?

Options :

- ✖ The more deactivating substituent increases the acidity
- ✔ The more activating substituent decreases the acidity
- ✖ The more activating substituent increases the acidity
- ✖ The more deactivating substituent increases the acidity; and the more activating substituent decreases the acidity

Question Number : 277 Question Id : 1679437508 Question Type : MCQ Option Shuffling : Yes Display Question Number : Yes  
Single Line Question Option : No Option Orientation : Vertical  
Correct : 1 Wrong : 0.25

Which of the following is/are the reason for the relatively low boiling point of branched alkanes?

Options :



- ✗ Ionic bonds
- ✗ Hydrogen bonds
- ✓ Vander walls attraction
- ✗ Ionic bonds and Hydrogen bonds

Question Number : 278 Question Id : 1679437509 Question Type : MCQ Option Shuffling : Yes Display Question Number : Yes  
Single Line Question Option : No Option Orientation : Vertical

Correct : 1 Wrong : 0.25

Calcium carbide reacts vigorously with water to yield:

Options :

- ✗ Ethene
- ✗ Ethane
- ✓ Acetylene
- ✗ Carbon

Question Number : 279 Question Id : 1679437510 Question Type : MCQ Option Shuffling : Yes Display Question Number : Yes  
Single Line Question Option : No Option Orientation : Vertical

Correct : 1 Wrong : 0.25

Reaction of alkyne with a solution of an alkali metal in liquid ammonia gives:

Options :

- ✓ Trans alkene
- ✗ Cis alkene
- ✗ Primary amine
- ✗ Alkane

Question Number : 280 Question Id : 1679437511 Question Type : MCQ Option Shuffling : Yes Display Question Number : Yes  
Single Line Question Option : No Option Orientation : Vertical

Correct : 1 Wrong : 0.25

Benzene is less dense than:

Options :

- ✗ Alkane

✔ Water

✘ Alkene

✘ Both Alkane and Alkene

Subject Related	
Group Number :	15
Group Id :	167943161
Group Maximum Duration :	0
Group Minimum Duration :	180
Revisit allowed for view? :	No
Revisit allowed for edit? :	No
Break time:	0
Group Marks:	20

Subject Related	
Section Id :	167943220
Section Number :	1
Section type :	Online
Mandatory or Optional:	Mandatory
Number of Questions:	20
Number of Questions to be attempted:	20
Section Marks:	20
Display Number Panel:	Yes
Group All Questions:	No

Sub-Section Number:	1
Sub-Section Id:	167943437
Question Shuffling Allowed :	Yes

Question Number : 281 Question Id : 1679437512 Question Type : MCQ Option Shuffling : Yes Display Question Number : Yes  
Single Line Question Option : No Option Orientation : Vertical  
Correct : 1 Wrong : 0.25

Which of the following is a major development in free play?

Options :

✘ Physical development

✘ Cognitive development

✔ Social and language development

✖ Emotional development

Question Number : 282 Question Id : 1679437513 Question Type : MCQ Option Shuffling : Yes Display Question Number : Yes  
Single Line Question Option : No Option Orientation : Vertical

Correct : 1 Wrong : 0.25

Select the correct option to complete the following sentence.

Privatization of schools further added to the:

Options :

✖ supported the education for all initiatives

✔ isolated girls from poor families, from school

✖ gave scope for adult education

✖ increased access to education

Question Number : 283 Question Id : 1679437514 Question Type : MCQ Option Shuffling : Yes Display Question Number : Yes  
Single Line Question Option : No Option Orientation : Vertical

Correct : 1 Wrong : 0.25

Select the correct option to complete the following sentence.

Alok closes his eyes while reciting rhymes and tables; he is most probably a:

Options :

✖ Kinesthetic learner

✖ Auditory learner

✔ Visual learner

✖ Tactile learner

Question Number : 284 Question Id : 1679437515 Question Type : MCQ Option Shuffling : Yes Display Question Number : Yes  
Single Line Question Option : No Option Orientation : Vertical

Correct : 1 Wrong : 0.25

Sonu liked to play with balloons, until one day he got frightened by the sound when it burst. From then on, he cries at the sight of balloons. Which of the following theories by psychologists describes this occurrence?

Options :

✖ Law of effect by Thorndike

✔ Classical conditioning by Pavlov

- ✖ Operant conditioning by Skinner
- ✖ Sign-gestalt theory of learning by Tolman

Question Number : 285 Question Id : 1679437516 Question Type : MCQ Option Shuffling : Yes Display Question Number : Yes  
Single Line Question Option : No Option Orientation : Vertical

Correct : 1 Wrong : 0.25

Select the correct option to complete the following sentence.

Listening comprehension is enhanced with a broader understanding in the:

Options :

- ✖ Bottoms-up model
- ✔ Top-down model
- ✖ Cooperative model
- ✖ Synchronous model

Question Number : 286 Question Id : 1679437517 Question Type : MCQ Option Shuffling : Yes Display Question Number : Yes  
Single Line Question Option : No Option Orientation : Vertical

Correct : 1 Wrong : 0.25

Select the correct option to complete the following sentence.

One of the main purposes of mathematics in real life is:

Options :

- ✔ Quantifying everything
- ✖ Calculating
- ✖ Reasoning
- ✖ Analysing

Question Number : 287 Question Id : 1679437518 Question Type : MCQ Option Shuffling : Yes Display Question Number : Yes  
Single Line Question Option : No Option Orientation : Vertical

Correct : 1 Wrong : 0.25

Select the correct option to complete the following sentence.

'Access to education for all girls' is one of the recommendations by:

Options :



✓ NFG on Gender Issues (2006)

✗ NCERT National Steering Committee on Textbook Evaluation (1999)

✗ NEP (1986)

✗ CEDAW (1993)

Question Number : 288 Question Id : 1679437519 Question Type : MCQ Option Shuffling : Yes Display Question Number : Yes  
Single Line Question Option : No Option Orientation : Vertical

Correct : 1 Wrong : 0.25

Select the correct option to complete the following sentence.

A significant feature of Self-Instructional Material (SIM) is:

Options :

✗ Individualised Learning

✓ Self-Learning

✗ Open Schooling

✗ Organised Learning

Question Number : 289 Question Id : 1679437520 Question Type : MCQ Option Shuffling : Yes Display Question Number : Yes  
Single Line Question Option : No Option Orientation : Vertical

Correct : 1 Wrong : 0.25

Shilpa wants her students to learn about manufacture of sugar through the educational tour approach. What is essentially her role in this?

Options :

✗ Organising the tour

✗ Informing parents

✓ Briefing the students about the purpose and expectations from the tour

✗ Accompany the students

Question Number : 290 Question Id : 1679437521 Question Type : MCQ Option Shuffling : Yes Display Question Number : Yes  
Single Line Question Option : No Option Orientation : Vertical

Correct : 1 Wrong : 0.25



Select the correct option to complete the following sentence.

While looking for any specific information, a reader:

Options :

- ☐ reads the write-up fast
- ☐ skims through the content
- ☒ scans through the content
- ☐ does 'Study Reading'

Question Number : 291 Question Id : 1679437522 Question Type : MCQ Option Shuffling : Yes Display Question Number : Yes  
Single Line Question Option : No Option Orientation : Vertical

Correct : 1 Wrong : 0.25

Select the correct option to complete the following sentence.

Linguistic creativity can be developed through activities like:

Options :

- ☒ Storytelling
- ☐ Debate
- ☐ Reciting poems
- ☐ Reading

Question Number : 292 Question Id : 1679437523 Question Type : MCQ Option Shuffling : Yes Display Question Number : Yes  
Single Line Question Option : No Option Orientation : Vertical

Correct : 1 Wrong : 0.25

Select the correct option to complete the following sentence.

Students are taking forward the traditional art culture of 'street plays' to create social awareness, now popular as \_\_\_\_\_ in the urban areas.

Options :

- ☐ Stage Performances
- ☐ Social Gatherings
- ☒ Flash Mobs

✖ Public Speeches

Question Number : 293 Question Id : 1679437524 Question Type : MCQ Option Shuffling : Yes Display Question Number : Yes  
Single Line Question Option : No Option Orientation : Vertical

Correct : 1 Wrong : 0.25

Select the correct option to complete the following sentence.

Excel is a \_\_\_\_\_ software widely used to perform mathematical calculations.

Options :

✔ Spreadsheet

✖ Calculating

✖ Sheet

✖ Mathematical

Question Number : 294 Question Id : 1679437525 Question Type : MCQ Option Shuffling : Yes Display Question Number : Yes  
Single Line Question Option : No Option Orientation : Vertical

Correct : 1 Wrong : 0.25

Select the statement that is INCORRECT regarding hyperlinks.

Options :

✔ There should be only one hyperlink on one webpage.

✖ It is a highlighted text on a webpage.

✖ When a hyperlink is clicked, you are connected to other pages on the web.

✖ Hyperlinks are highlighted by underlining the text, displaying them in different colours or both.

Question Number : 295 Question Id : 1679437526 Question Type : MCQ Option Shuffling : Yes Display Question Number : Yes  
Single Line Question Option : No Option Orientation : Vertical

Correct : 1 Wrong : 0.25

Select the correct option to complete the following sentence.

The direct impact of Deforestation is:

Options :

✔ soil erosion and ecological imbalance

✖ surplus animal population

✘ disrupted energy flow in the environment

✘ increased number of smaller plants

Question Number : 296 Question Id : 1679437527 Question Type : MCQ Option Shuffling : Yes Display Question Number : Yes  
Single Line Question Option : No Option Orientation : Vertical

Correct : 1 Wrong : 0.25

Select the correct option to complete the following sentence.

Blueprint essentially comprises:

Options :

✔ content, type of questions, level of difficulty and score

✘ number of questions and marks

✘ list of questions and marks

✘ lesson objectives and type of questions

Question Number : 297 Question Id : 1679437528 Question Type : MCQ Option Shuffling : Yes Display Question Number : Yes  
Single Line Question Option : No Option Orientation : Vertical

Correct : 1 Wrong : 0.25

Which of the following is an example of criterion-referenced evaluation?

Options :

✘ Geeta corrected 80 items out of 100 items in a test within 60 minutes.

✔ John is an average student in the class.

✘ Mohan stood third in the class.

✘ Ram scores 50 marks in Science.

Question Number : 298 Question Id : 1679437529 Question Type : MCQ Option Shuffling : Yes Display Question Number : Yes  
Single Line Question Option : No Option Orientation : Vertical

Correct : 1 Wrong : 0.25

Select the correct option to complete the following sentence.

One of the strategies to overcome barriers for reflecting and improving proficiency could be:

Options :

✘ Demonstration

✘ Meetings with the principal

✔ Microteaching

✘ Seminars

Question Number : 299 Question Id : 1679437530 Question Type : MCQ Option Shuffling : Yes Display Question Number : Yes  
Single Line Question Option : No Option Orientation : Vertical

Correct : 1 Wrong : 0.25

Which of the following exemplifies Philosophy of Inclusion?

Options :

✔ Equal opportunities for participation

✘ Sitting in the same class in the main stream class

✘ Infrastructural facilities provided in the school

✘ Exemptions in exams

Question Number : 300 Question Id : 1679437531 Question Type : MCQ Option Shuffling : Yes Display Question Number : Yes  
Single Line Question Option : No Option Orientation : Vertical

Correct : 1 Wrong : 0.25

Identify the SEN (Special Educational Needs).

Madhu is the teacher of an inclusive class. She allows Nitin to walk around and gives him time to settle because she knows he:

Options :

✘ is visually challenged

✘ is on the Autistic spectrum

✔ has ADHD

✘ is child with learning difficulties