

Multi Tasking Non Technical Staff and Havaladar CBIC and CBN Examination 2023

Roll Number	
Candidate Name	
Venue Name	TCS Gito Bitan
Exam Date	11/09/2023
Exam Time	4:00 PM - 6:00 PM
Subject	MTS Non Tech Havaladar CBIC and CBN Examination 2023

Section : Numerical and Mathematical Ability

Q.1 A thief noticed a policeman at a distance of 500 m away from him. The thief starts running at a speed of 60 km/h and the policeman chased him running at a speed of 70 km/h. Find the time taken by the policeman to catch the thief (in minutes).

- Ans
- ☒ 1. 15
 - ☒ 2. 10
 - ☒ 3. 3
 - ☒ 4. 6

Question ID : 264330153852

Option 1 ID : 264330602874

Option 2 ID : 264330602871

Option 3 ID : 264330602873

Option 4 ID : 264330602872

Status : Answered

Chosen Option : 3

Q.2 If the income of T is 8 times his savings, then his expenditure is _____ times his savings.

- Ans
- ☒ 1. 6
 - ☒ 2. 7
 - ☒ 3. 8
 - ☒ 4. 5

Question ID : 264330153803

Option 1 ID : 264330602677

Option 2 ID : 264330602676

Option 3 ID : 264330602675

Option 4 ID : 264330602678

Status : Answered

Chosen Option : 2

Test Prime

**ALL EXAMS,
ONE SUBSCRIPTION**



70,000+
Mock Tests



**Personalised
Report Card**



**Unlimited
Re-Attempt**



600+
Exam Covered



**Previous Year
Papers**



**500%
Refund**



ATTEMPT FREE MOCK NOW

Q.3 The average marks of 21 papers is 50. The average marks of the first 11 papers is 52 and that of the last 11 papers is 45. Find the marks of the 11th paper.

- Ans** ☒ 1. 17
☐ 2. 14
☐ 3. 20
☐ 4. 15

Question ID : 264330153834

Option 1 ID : 264330602802

Option 2 ID : 264330602799

Option 3 ID : 264330602800

Option 4 ID : 264330602801

Status : Answered

Chosen Option : 1

Q.4 By selling a cycle for ₹5,800, a man gains 45%. What will be the cost price of the cycle?

- Ans** ☐ 1. ₹3,000
☐ 2. ₹4,500
☒ 3. ₹4,000
☐ 4. ₹3,500

Question ID : 264330162068

Option 1 ID : 264330635600

Option 2 ID : 264330635602

Option 3 ID : 264330635599

Option 4 ID : 264330635601

Status : Answered

Chosen Option : 3

Q.5 Mayur and Aham enter into a partnership by making investments in the ratio 2 : 3. 10% of the total profit goes to charity. If Aham's share is ₹4,860, then what is the total profit (in ₹) earned?

- Ans** ☐ 1. 7,200
☒ 2. 9,000
☐ 3. 8,500
☐ 4. 11,000

Question ID : 264330155743

Option 1 ID : 264330610378

Option 2 ID : 264330610376

Option 3 ID : 264330610377

Option 4 ID : 264330610375

Status : Answered

Chosen Option : 4

Q.6 A certain sum of money lent out at simple interest amounts to ₹12,600 in 2 years and ₹16,200 in 4 years. The rate per cent per annum is:

- Ans
- ☒ 1. 25 %
 - ☒ 2. $12\frac{6}{7}$ %
 - ☒ 3. $17\frac{1}{2}$ %
 - ☒ 4. 20 %

Question ID : 264330159036

Option 1 ID : 264330623505

Option 2 ID : 264330623506

Option 3 ID : 264330623504

Option 4 ID : 264330623503

Status : Answered

Chosen Option : 4

Q.7 Dev and Goyal together can do a piece of work in 14 days and Dev alone can do it in 27 days. In how many days can Goyal alone do it?

- Ans
- ☒ 1. $21\frac{1}{13}$
 - ☒ 2. $30\frac{1}{13}$
 - ☒ 3. $29\frac{1}{13}$
 - ☒ 4. $32\frac{1}{13}$

Question ID : 264330155755

Option 1 ID : 264330610423

Option 2 ID : 264330610425

Option 3 ID : 264330610424

Option 4 ID : 264330610426

Status : Answered

Chosen Option : 1

Q.8 A company buys raw materials for ₹10,000 and manufactures a product that costs an additional ₹5,000 in labour and overhead. The product is sold to a distributor for ₹25,000, who marks it up by 20% and sells it to a retailer. The retailer then marks it up by another 25% and sells it to the end customer. What is the overall percentage profit made by the company, distributor, and retailer combined?

- Ans
- ☒ 1. 100%
 - ☒ 2. 150%
 - ☒ 3. 125%
 - ☒ 4. 135%

Question ID : 264330156266

Option 1 ID : 264330612463

Option 2 ID : 264330612466

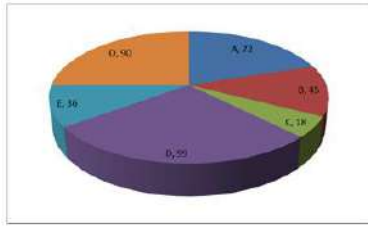
Option 3 ID : 264330612464

Option 4 ID : 264330612465

Status : Answered

Chosen Option : 2

Q.9 The pie diagram represents the export of different types of fabrics (in degree measure) from India during 2015.
Out of the total export, what is the percentage of fabric B?



- Ans**
- ☒ 1. 45%
 - ☒ 2. 25%
 - ☒ 3. 12.5%
 - ☒ 4. 18%

Question ID : 264330154065

Option 1 ID : 264330603723

Option 2 ID : 264330603724

Option 3 ID : 264330603725

Option 4 ID : 264330603726

Status : Answered

Chosen Option : 3

Q.10 Find the area (in cm^2) of the rhombus, lengths of whose diagonals are, respectively, 7.5 cm and 5.6 cm.

- Ans**
- ☒ 1. 21
 - ☒ 2. 28
 - ☒ 3. 27
 - ☒ 4. 30

Question ID : 264330153862

Option 1 ID : 264330602912

Option 2 ID : 264330602911

Option 3 ID : 264330602913

Option 4 ID : 264330602914

Status : Answered

Chosen Option : 2

Q.11 The average age of 25 students in a group is 14 years. When the teacher's age is included, the average increases by 1.5 years. What is the teacher's age (in years)?

- Ans**
- ☒ 1. 42
 - ☒ 2. 50
 - ☒ 3. 53
 - ☒ 4. 46

Question ID : 264330156466

Option 1 ID : 264330613254

Option 2 ID : 264330613251

Option 3 ID : 264330613253

Option 4 ID : 264330613252

Status : Answered

Chosen Option : 3

Q.12 If $a : b = 3 : 7$, then the ratio of $(5a + 7b) : (7a + 5b)$ is:

- Ans
- ☐ 1. $3 : 7$
 - ☐ 2. $7 : 11$
 - ☐ 3. $7 : 9$
 - ☒ 4. $8 : 7$

Question ID : 264330154081
Option 1 ID : 264330603788
Option 2 ID : 264330603787
Option 3 ID : 264330603790
Option 4 ID : 264330603789
Status : Answered
Chosen Option : 4

Q.13 Two-fifth of a journey is covered at a speed of 45 km/h, and the remaining distance is covered at the rate of 63 km/h. The average speed for the whole journey (in km/h, rounded off to the nearest integer) is:

- Ans
- ☐ 1. 60
 - ☐ 2. 58
 - ☒ 3. 54
 - ☐ 4. 55

Question ID : 264330156470
Option 1 ID : 264330613267
Option 2 ID : 264330613270
Option 3 ID : 264330613268
Option 4 ID : 264330613269
Status : Answered
Chosen Option : 1

Q.14 Some solid metallic right circular cones, each with diameter of the base 8 cm and height 6 cm are melted to form a solid sphere of radius 12 cm. Find the number of right circular cones which are melted.

- Ans
- ☐ 1. 60
 - ☐ 2. 66
 - ☒ 3. 72
 - ☐ 4. 70

Question ID : 264330156019
Option 1 ID : 264330611476
Option 2 ID : 264330611478
Option 3 ID : 264330611477
Option 4 ID : 264330611475
Status : Answered
Chosen Option : 3

Q.15 Radha, Pratima and Reena begin to jog around a circular path and they complete their revolutions in 50 seconds, 75 seconds and 100 seconds, respectively. After how much time (in minutes) will they meet together at the starting point for the first time?

- Ans
- ☒ 1. 6
 - ☒ 2. 5
 - ☒ 3. 4
 - ☒ 4. 3

Question ID : 264330155686

Option 1 ID : 264330610150

Option 2 ID : 264330610149

Option 3 ID : 264330610148

Option 4 ID : 264330610147

Status : Answered

Chosen Option : 2

Q.16 A, B and C can complete a piece of work in 12 days, 24 days and 36 days, respectively. A starts working alone on the first day and then A is assisted by B on the second day and C on the third day, respectively. This pattern is repeated till the work gets completed. In how many days does the work will be over?

- Ans
- ☒ 1. 9
 - ☒ 2. 10
 - ☒ 3. $9\frac{1}{2}$
 - ☒ 4. $8\frac{1}{2}$

Question ID : 264330156310

Option 1 ID : 264330612641

Option 2 ID : 264330612639

Option 3 ID : 264330612642

Option 4 ID : 264330612640

Status : Answered

Chosen Option : 4

Q.17 The table shows the annual expenditure of five families during the last 5 years. (In ₹ Thousands)

Year→ Family ↓	2017	2018	2019	2020	2021
F ₁	35	50	55	60	45
F ₂	45	35	60	55	40
F ₃	53	40	45	65	50
F ₄	40	30	35	50	45
F ₅	35	45	55	50	45

Which family had the highest expense throughout the years?

- Ans**
- ☒ 1. F₅
 - ☒ 2. F₄
 - ☒ 3. F₃
 - ☒ 4. F₁

Question ID : 264330154061

Option 1 ID : 264330603708

Option 2 ID : 264330603710

Option 3 ID : 264330603709

Option 4 ID : 264330603707

Status : Answered

Chosen Option : 3

Q.18 In how many years will ₹1,60,000 become ₹2,79,841 at a compound interest (Compounded annually) rate of 15% per annum?

- Ans**
- ☒ 1. 6
 - ☒ 2. 3
 - ☒ 3. 5
 - ☒ 4. 4

Question ID : 264330156189

Option 1 ID : 264330612155

Option 2 ID : 264330612158

Option 3 ID : 264330612156

Option 4 ID : 264330612157

Status : Answered

Chosen Option : 4

Q.19 Identify the single rational number that may replace the given expression.

$$[1^2 + 2^2 + 3^2 + 4^2] \times \frac{2}{3 \times 5} \div \left(\frac{1}{4}\right)^2$$

Ans ☒ 1. 16

☒ 2. 64

☒ 3. $\frac{1}{64}$

☒ 4. $\frac{1}{16}$

Question ID : 264330154115

Option 1 ID : 264330603925

Option 2 ID : 264330603923

Option 3 ID : 264330603924

Option 4 ID : 264330603926

Status : Answered

Chosen Option : 2

Q.20 Two trains A and B, 210 m and 150 m, respectively, in length, are running in the same direction on parallel lines. If the speed of A and B be 110 km/h and 128 km/h, respectively, then what will be the time (in seconds) taken by train B to cross train A?

Ans ☒ 1. 72

☒ 2. 74

☒ 3. 71

☒ 4. 70

Question ID : 264330156234

Option 1 ID : 264330612337

Option 2 ID : 264330612338

Option 3 ID : 264330612336

Option 4 ID : 264330612335

Status : Answered

Chosen Option : 2

Section : Reasoning Ability and Problem Solving

Q.1 Read the given statements and conclusions carefully. You have to take the given statements to be true even if they seem to be at variance from commonly known facts. You have to decide which conclusion/s logically follow/s from the given statements.

Statements: All trees are mobiles. Some mobiles are small. All small are ants.

Conclusion I: Some trees are mobiles.

Conclusion II: Some ants are small.

Ans ☒ 1. Only conclusion (II) is follow.

☒ 2. Neither conclusion (I) nor (II) is follow.

☒ 3. Only conclusion (I) is follow.

☒ 4. Both conclusions (I) and (II) are follow.

Question ID : 264330155894

Option 1 ID : 264330610980

Option 2 ID : 264330610981

Option 3 ID : 264330610979

Option 4 ID : 264330610982

Status : Answered

Chosen Option : 1

Q.2 If A means '-', E means '×', D means '+', G means '÷', then what will come in place of the question mark (?) in the following equation?

$$21 \text{ G } 14 \text{ D } 1 \text{ A } 2 \text{ E } 8 = ?$$

- Ans**
- ☒ 1. 11
 - ☒ 2. 25
 - ☒ 3. 17
 - ☒ 4. 19

Question ID : 264330154681

Option 1 ID : 264330606187

Option 2 ID : 264330606190

Option 3 ID : 264330606188

Option 4 ID : 264330606189

Status : Answered

Chosen Option : 4

Q.3 What will come in place of '?' in the following equation, if '+' and '×' are interchanged and '×' and '-' are interchanged?

$$10 \div 2 - 6 \times 7 + 1 = ?$$

- Ans**
- ☒ 1. 24
 - ☒ 2. 19
 - ☒ 3. 18
 - ☒ 4. 15

Question ID : 264330154661

Option 1 ID : 264330606109

Option 2 ID : 264330606110

Option 3 ID : 264330606108

Option 4 ID : 264330606107

Status : Answered

Chosen Option : 4

Q.4 What should come in place of ? in the given series?

$$57 \quad 62 \quad 72 \quad 77 \quad 87 \quad ?$$

- Ans**
- ☒ 1. 94
 - ☒ 2. 93
 - ☒ 3. 92
 - ☒ 4. 91

Question ID : 264330151549

Option 1 ID : 264330593826

Option 2 ID : 264330593825

Option 3 ID : 264330593824

Option 4 ID : 264330593823

Status : Answered

Chosen Option : 3

Q.5 What should come in place of ? in the given series based on the English alphabetical order?

LAT, KYS, JWR, IUQ, ?

- Ans
- ☒ 1. GRQ
 - ☒ 2. HSP
 - ☒ 3. ISP
 - ☒ 4. HQR

Question ID : 264330155777

Option 1 ID : 264330610514

Option 2 ID : 264330610513

Option 3 ID : 264330610512

Option 4 ID : 264330610511

Status : Answered

Chosen Option : 2

Q.6 Read the given statements and conclusions carefully. You have to take the given statements to be true even if they seem to be at variance from commonly known facts. You have to decide which conclusion/s logically follow/s from the given statements.

Statements: All apples are fire. All fire is hot. Some hot are crabs.

Conclusion I: No apples are hot.

Conclusion II: Some crabs are fire.

- Ans
- ☒ 1. Only conclusion (II) is follow.
 - ☒ 2. Neither conclusion (I) nor (II) is follow.
 - ☒ 3. Only conclusion (I) is follow.
 - ☒ 4. Both conclusions (I) and (II) are follow.

Question ID : 264330155918

Option 1 ID : 264330611076

Option 2 ID : 264330611077

Option 3 ID : 264330611075

Option 4 ID : 264330611078

Status : Answered

Chosen Option : 2

Q.7 Find out the correct alternative that when filled in the blanks in the same sequence will make the series logically complete.

DFZ_ D_CJ DF_I _FIH DF_G

- Ans
- ☒ 1. DLFFK
 - ☒ 2. KFFDL
 - ☒ 3. KDFLF
 - ☒ 4. FDFKL

Question ID : 264330154724

Option 1 ID : 264330606361

Option 2 ID : 264330606362

Option 3 ID : 264330606360

Option 4 ID : 264330606359

Status : Answered

Chosen Option : 2

Q.8 22 is related to 198 following a certain logic. Following the same logic, 41 is related to 369. To which of the following is 54 related to, following the same logic?

- Ans**
- ☒ 1. 286
 - ☒ 2. 486
 - ☒ 3. 268
 - ☒ 4. 468

Question ID : 264330151606
Option 1 ID : 264330594052
Option 2 ID : 264330594051
Option 3 ID : 264330594054
Option 4 ID : 264330594053
Status : Answered
Chosen Option : 2

Q.9 What should come in place of '?' in the given series?

7 16 43 ? 367 1096 3283

- Ans**
- ☒ 1. 105
 - ☒ 2. 117
 - ☒ 3. 124
 - ☒ 4. 98

Question ID : 264330151490
Option 1 ID : 264330593588
Option 2 ID : 264330593589
Option 3 ID : 264330593590
Option 4 ID : 264330593587
Status : Answered
Chosen Option : 3

Q.10 Select the word-pair that best represents a similar relationship to the one expressed in the pair of words given below.

(The words must be considered as meaningful English words and must not be related to each other based on the number of letters/number of consonants/vowels in the word)

Bacteria : Decomposition

- Ans**
- ☒ 1. Oxygen : Treatment
 - ☒ 2. Yeast : Fermentation
 - ☒ 3. Volcano : Eruption
 - ☒ 4. Antibiotic : Injection

Question ID : 264330154635
Option 1 ID : 264330606006
Option 2 ID : 264330606005
Option 3 ID : 264330606003
Option 4 ID : 264330606004
Status : Answered
Chosen Option : 2

Q.11 Which figure should replace the question mark (?) if the following figure series were to be continued?

L	I	G	Q	B	I	T	2	G	I	Q	2	
	B	6		6	G		Q	L		L	G	?
Q		T	T		L	I		6	6		T	

Ans

✗ 1.

6	I	T
	Q	2
L		G

✗ 2.

Q	2	6
	I	F
T		L

✗ 3.

6	G	T
	I	Q
2		L

✓ 4.

6	F	G
	I	T
2		L

Question ID : 264330154750

Option 1 ID : 264330606465

Option 2 ID : 264330606464

Option 3 ID : 264330606463

Option 4 ID : 264330606466

Status : Answered

Chosen Option : 2

Q.12 11 is related to 123 following a certain logic. Following the same logic, 20 is related to 402. To which of the following is 13 related to, following the same logic?

Ans ✓ 1. 171

✗ 2. 172

✗ 3. 173

✗ 4. 174

Question ID : 264330151582

Option 1 ID : 264330593955

Option 2 ID : 264330593956

Option 3 ID : 264330593957

Option 4 ID : 264330593958

Status : Answered

Chosen Option : 1

Q.13 In a certain code language, 'SCAR' is coded as '2386' and 'RACE' is coded as '8642'. What is the code for 'E' in the given code language?

- Ans
- ☒ 1. 8
 - ☒ 2. 4
 - ☒ 3. 2
 - ☒ 4. 6

Question ID : 264330151708

Option 1 ID : 264330594462

Option 2 ID : 264330594459

Option 3 ID : 264330594461

Option 4 ID : 264330594460

Status : Answered

Chosen Option : 2

Q.14 In a certain code language, 'QUALIFY' is coded as 'PTZKHYF' and 'PANTHER' is coded as 'OZMSGRE'. What is the code for 'FORCEPS' in the given code language?

- Ans
- ☒ 1. EMOCDRQ
 - ☒ 2. DMQCERP
 - ☒ 3. DNPCDSQ
 - ☒ 4. ENQBDSP

Question ID : 264330155829

Option 1 ID : 264330610722

Option 2 ID : 264330610720

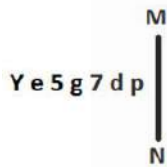
Option 3 ID : 264330610719

Option 4 ID : 264330610721

Status : Answered

Chosen Option : 4

Q.15 Select the correct mirror image of the given figure when the mirror is placed at MN as shown below.



- Ans
- ☒ 1. q b 7 g 5 e Y
 - ☒ 2. q b 7 g 2 e Y
 - ☒ 3. q b 7 g 2 e Y
 - ☒ 4. d b g 7 2 e Y

Question ID : 264330151515

Option 1 ID : 264330593687

Option 2 ID : 264330593690

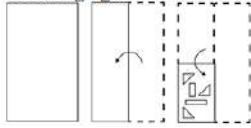
Option 3 ID : 264330593688

Option 4 ID : 264330593689

Status : Answered

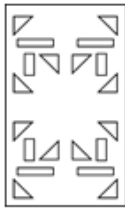
Chosen Option : 3

Q.16 The sequence of folding a piece of paper and the manner in which the folded paper is cut is shown in the following figures. How would this paper look when unfolded?

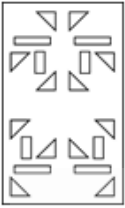


Ans

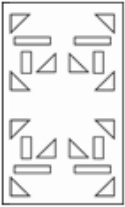
✓ 1.



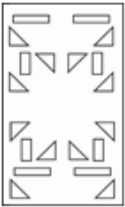
✗ 2.



✗ 3.



✗ 4.



Question ID : 264330155610

Option 1 ID : 264330609843

Option 2 ID : 264330609845

Option 3 ID : 264330609846

Option 4 ID : 264330609844

Status : Answered

Chosen Option : 1

Q.17 If 13th March 2007 is Tuesday then what will be the day of the week on 14th Sep 2017?

Ans ✗ 1. Monday

✗ 2. Tuesday

✓ 3. Thursday

✗ 4. Wednesday

Question ID : 264330154335

Option 1 ID : 264330604803

Option 2 ID : 264330604804

Option 3 ID : 264330604805

Option 4 ID : 264330604806

Status : Answered

Chosen Option : 4

Q.18 Select the combination of letters that when sequentially placed in the blanks of the given series, will complete the series.

ZY _ Z _ Z _ _ ZZ _ Z

- Ans
- ☒ 1. ZYZZ
 - ☒ 2. ZYZY
 - ☒ 3. YZZZ
 - ☒ 4. YYZY

Question ID : 264330151643

Option 1 ID : 264330594199

Option 2 ID : 264330594201

Option 3 ID : 264330594202

Option 4 ID : 264330594200

Status : Answered

Chosen Option : 2

Q.19 Seven people, V, F, D, S, R, C, and P are sitting in a straight line, facing south. Only two people sit between V and P. Only two people sit to the right of V. D sits third to the left of S. P is an immediate neighbour of D and F. C is an immediate neighbour of S.

Total how many people sit between S and P?

- Ans
- ☒ 1. Four
 - ☒ 2. One
 - ☒ 3. Three
 - ☒ 4. Two

Question ID : 264330161694

Option 1 ID : 264330634106

Option 2 ID : 264330634103

Option 3 ID : 264330634105

Option 4 ID : 264330634104

Status : Answered

Chosen Option : 3

Q.20 What should come in place of ? in the given series?

84 88 96 108 124 ?

- Ans
- ☒ 1. 124
 - ☒ 2. 154
 - ☒ 3. 134
 - ☒ 4. 144

Question ID : 264330151543

Option 1 ID : 264330593799

Option 2 ID : 264330593802

Option 3 ID : 264330593800

Option 4 ID : 264330593801

Status : Answered

Chosen Option : 4

Section : General Awareness

Q.1 In which year did the 'Battle of Buxar' take place?

- Ans ☒ 1. 1764 CE
☒ 2. 1769 CE
☒ 3. 1757 CE
☒ 4. 1761 CE

Question ID : 264330162322
 Option 1 ID : 264330636616
 Option 2 ID : 264330636618
 Option 3 ID : 264330636615
 Option 4 ID : 264330636617
 Status : Answered
 Chosen Option : 1

Q.2 Which Article of the Indian Constitution mandates that the state should protect every monument or place of artistic or historic interest?

- Ans ☒ 1. Article 39A
☒ 2. Article 50
☒ 3. Article 49
☒ 4. Article 48A

Question ID : 264330162254
 Option 1 ID : 264330636346
 Option 2 ID : 264330636344
 Option 3 ID : 264330636343
 Option 4 ID : 264330636345
 Status : Answered
 Chosen Option : 3

Q.3 To mark the celebration of Gandhi Jayanti, the _____ celebrates it as International Day of Non-Violence.

- Ans ☒ 1. United Nations
☒ 2. BRICS Nations
☒ 3. South Asian Association for Regional Cooperation
☒ 4. Group of 20

Question ID : 264330160825
 Option 1 ID : 264330630633
 Option 2 ID : 264330630634
 Option 3 ID : 264330630632
 Option 4 ID : 264330630631
 Status : Answered
 Chosen Option : 1

Q.4 Alarmel Valli is a _____ dancer.

- Ans ☒ 1. Bharatnatyam
☒ 2. Odissi
☒ 3. Kuchipudi
☒ 4. Kathak

Question ID : 264330159068
 Option 1 ID : 264330623631
 Option 2 ID : 264330623634
 Option 3 ID : 264330623632
 Option 4 ID : 264330623633
 Status : Answered
 Chosen Option : 1

Q.5 Which of the following is an example of a microfinance institution (MFI) in India?

- Ans ☒ 1. State Bank of India (SBI)
- ☒ 2. Bandhan Bank
- ☒ 3. ICICI Bank
- ☒ 4. HDFC Bank

Question ID : 264330157296
Option 1 ID : 264330616547
Option 2 ID : 264330616549
Option 3 ID : 264330616548
Option 4 ID : 264330616550
Status : Answered
Chosen Option : 2

Q.6 Which of the following is an autobiography by Mahatma Gandhi?

- Ans ☒ 1. The Story of My Experiments with Truth
- ☒ 2. My Truth
- ☒ 3. Matters of Discretion
- ☒ 4. My Country My Life

Question ID : 264330161756
Option 1 ID : 264330634351
Option 2 ID : 264330634354
Option 3 ID : 264330634353
Option 4 ID : 264330634352
Status : Answered
Chosen Option : 1

Q.7 Which of the following has initiated the Village Defence Guards scheme to instil a sense of self protection and ensure the safety and security of villages and infrastructural installations in and around the villages?

- Ans ☒ 1. Ladakh
- ☒ 2. Uttar Pradesh
- ☒ 3. Jammu and Kashmir
- ☒ 4. Rajasthan

Question ID : 264330161407
Option 1 ID : 264330632957
Option 2 ID : 264330632958
Option 3 ID : 264330632955
Option 4 ID : 264330632956
Status : Answered
Chosen Option : 3

Q.8 The Sirpur Shrine is situated in which of the following states?

- Ans ☒ 1. Odisha
- ☒ 2. Uttar Pradesh
- ☒ 3. Chhattisgarh
- ☒ 4. Bihar

Question ID : 264330160756
Option 1 ID : 264330630357
Option 2 ID : 264330630358
Option 3 ID : 264330630355
Option 4 ID : 264330630356
Status : Answered
Chosen Option : 4

Q.9 Which of the following factors does NOT affect the climate of India?

- Ans
- ☒ 1. Altitude
 - ☒ 2. Longitude
 - ☒ 3. Latitude
 - ☒ 4. Winds

Question ID : 264330157828
 Option 1 ID : 264330618671
 Option 2 ID : 264330618674
 Option 3 ID : 264330618672
 Option 4 ID : 264330618673
 Status : Answered
 Chosen Option : 4

Q.10 What is the common name for a saturated solution of calcium hydroxide widely used as a raw material in the chemical industry?

- Ans
- ☒ 1. Slaked lime
 - ☒ 2. Calomel
 - ☒ 3. Burnt Lime
 - ☒ 4. Limestone

Question ID : 264330161053
 Option 1 ID : 264330631544
 Option 2 ID : 264330631543
 Option 3 ID : 264330631545
 Option 4 ID : 264330631546
 Status : Answered
 Chosen Option : 2

Q.11 Who among the following singers is from Andhra Pradesh?

- Ans
- ☒ 1. Usha Uthup
 - ☒ 2. Asha Bhosle
 - ☒ 3. Alka Yagnik
 - ☒ 4. S Janaki

Question ID : 264330162234
 Option 1 ID : 264330636264
 Option 2 ID : 264330636263
 Option 3 ID : 264330636266
 Option 4 ID : 264330636265
 Status : Answered
 Chosen Option : 4

Q.12 Who led the Congress in the second round table conference held in London?

- Ans
- ☒ 1. Annie Besant
 - ☒ 2. Sarojini Naidu
 - ☒ 3. Jawahar Lal Nehru
 - ☒ 4. Mahatma Gandhi

Question ID : 264330162335
 Option 1 ID : 264330636670
 Option 2 ID : 264330636669
 Option 3 ID : 264330636668
 Option 4 ID : 264330636667
 Status : Answered
 Chosen Option : 4

Q.13 According to the Census of India 2011, which state has the second highest sex ratio?

- Ans ☒ 1. Kerala
☒ 2. Tamil Nadu
☒ 3. Assam
☒ 4. Bihar

Question ID : 264330160159
 Option 1 ID : 264330627975
 Option 2 ID : 264330627976
 Option 3 ID : 264330627977
 Option 4 ID : 264330627978
 Status : Answered
 Chosen Option : 3

Q.14 Factor cost is also known as:

- Ans ☒ 1. market cost
☒ 2. ex-factory cost
☒ 3. input cost
☒ 4. output cost

Question ID : 264330161458
 Option 1 ID : 264330633161
 Option 2 ID : 264330633162
 Option 3 ID : 264330633159
 Option 4 ID : 264330633160
 Status : Answered
 Chosen Option : 3

Q.15 Which cell found in the bone marrow acts as a repair system for the body?

- Ans ☒ 1. Bone Cells
☒ 2. Fat Cells
☒ 3. Muscle cells
☒ 4. Stem cells

Question ID : 264330161085
 Option 1 ID : 264330631672
 Option 2 ID : 264330631673
 Option 3 ID : 264330631674
 Option 4 ID : 264330631671
 Status : Answered
 Chosen Option : 4

Q.16 Which of the following is a famous folk dance of Rajasthan?

- Ans ☒ 1. Chang Lo
☒ 2. Daskathia
☒ 3. Kalbelia
☒ 4. Pala Jatra

Question ID : 264330159058
 Option 1 ID : 264330623591
 Option 2 ID : 264330623594
 Option 3 ID : 264330623592
 Option 4 ID : 264330623593
 Status : Answered
 Chosen Option : 3

Q.17 When was the first general election for Lok Sabha held in India?

- Ans ☒ 1. 1950-51
☒ 2. 1949-50
☒ 3. 1948-49
☒ 4. 1951-52

Question ID : 264330160863
 Option 1 ID : 264330630785
 Option 2 ID : 264330630784
 Option 3 ID : 264330630783
 Option 4 ID : 264330630786
 Status : Answered
 Chosen Option : 4

Q.18 Who among the following female singers has been felicitated with the Bharat Ratna?

- Ans ☒ 1. Usha Uthup
☒ 2. Lata Mangeshkar
☒ 3. Asha Bhosle
☒ 4. Vani Jayaram

Question ID : 264330160975
 Option 1 ID : 264330631233
 Option 2 ID : 264330631232
 Option 3 ID : 264330631231
 Option 4 ID : 264330631234
 Status : Answered
 Chosen Option : 2

Q.19 Which of the following states of India is the first to receive rainfall from the South West Monsoon?

- Ans ☒ 1. Himachal Pradesh
☒ 2. Kerala
☒ 3. Telangana
☒ 4. Rajasthan

Question ID : 264330161518
 Option 1 ID : 264330633401
 Option 2 ID : 264330633400
 Option 3 ID : 264330633402
 Option 4 ID : 264330633399
 Status : Answered
 Chosen Option : 2

Q.20 Which famous Indian danseuse became the first woman to be nominated as a member of Rajya Sabha?

- Ans ☒ 1. Rukmini Devi Arundale
☒ 2. Kamala Kumari
☒ 3. Sitara Devi
☒ 4. Mrinalini Sarabhai

Question ID : 264330155475
 Option 1 ID : 264330609303
 Option 2 ID : 264330609305
 Option 3 ID : 264330609304
 Option 4 ID : 264330609306
 Status : Answered
 Chosen Option : 4

Q.21 Which of the following is a famous novel written by Munshi Premchand?

- Ans
- ☒ 1. Gunaho Ka Devta
 - ☒ 2. Kitne Pakistan
 - ☒ 3. Rag Darbari
 - ☒ 4. Godan

Question ID : 264330155502
 Option 1 ID : 264330609413
 Option 2 ID : 264330609412
 Option 3 ID : 264330609411
 Option 4 ID : 264330609414
 Status : Answered
 Chosen Option : 4

Q.22 India played in the finals of the 2023 World Test Championship against Australia. Where was this match conducted?

- Ans
- ☒ 1. Dubai
 - ☒ 2. London
 - ☒ 3. Kolkata
 - ☒ 4. Sydney

Question ID : 264330161144
 Option 1 ID : 264330631910
 Option 2 ID : 264330631907
 Option 3 ID : 264330631909
 Option 4 ID : 264330631908
 Status : Answered
 Chosen Option : 4

Q.23 D Gukesh was awarded player of the year award in March 2023. He plays which sport?

- Ans
- ☒ 1. Snooker
 - ☒ 2. Boxing
 - ☒ 3. Badminton
 - ☒ 4. Chess

Question ID : 264330158357
 Option 1 ID : 264330620788
 Option 2 ID : 264330620790
 Option 3 ID : 264330620787
 Option 4 ID : 264330620789
 Status : Answered
 Chosen Option : 2

Q.24 According to the Ministry of Textile 2022-23, which state is the second largest producer of cotton?

- Ans ☒ 1. Maharashtra
☒ 2. Bihar
☒ 3. Gujarat
☒ 4. Madhya Pradesh

Question ID : 264330160142
 Option 1 ID : 264330627907
 Option 2 ID : 264330627909
 Option 3 ID : 264330627908
 Option 4 ID : 264330627910
 Status : Answered
 Chosen Option : 1

Q.25 In which of the following States was the final of the 2023 Intercontinental Cup football championship held?

- Ans ☒ 1. Maharashtra
☒ 2. Telangana
☒ 3. Karnataka
☒ 4. Odisha

Question ID : 264330161151
 Option 1 ID : 264330631936
 Option 2 ID : 264330631938
 Option 3 ID : 264330631935
 Option 4 ID : 264330631937
 Status : Not Answered
 Chosen Option : --

Section : English Language and Comprehension

Q.1 Select the INCORRECTLY spelt word.

- Ans ☒ 1. Humorous
☒ 2. Necassery
☒ 3. Apparent
☒ 4. Definite

Question ID : 264330153107
 Option 1 ID : 264330599994
 Option 2 ID : 264330599992
 Option 3 ID : 264330599991
 Option 4 ID : 264330599993
 Status : Answered
 Chosen Option : 2

Q.2 Select the option that can be used as a one-word substitute for the given group of words.

A small shop that sells fashionable clothes

Ans ☒ 1. Boutique

☒ 2. Store

☒ 3. Tailoring

☒ 4. Couture

Question ID : 264330152587

Option 1 ID : 264330597952

Option 2 ID : 264330597951

Option 3 ID : 264330597954

Option 4 ID : 264330597953

Status : Answered

Chosen Option : 1

Q.3 Parts of the following sentence have been given as options. Select the option that contains an error.

The blue is a beautiful colour.

Ans ☒ 1. The blue

☒ 2. is

☒ 3. a

☒ 4. beautiful colour

Question ID : 264330152790

Option 1 ID : 264330598751

Option 2 ID : 264330598752

Option 3 ID : 264330598753

Option 4 ID : 264330598754

Status : Answered

Chosen Option : 1

Q.4 Select the most appropriate option to fill in the blank.

The Nile is the _____ river of the world.

Ans ☒ 1. long

☒ 2. longer

☒ 3. more longer

☒ 4. longest

Question ID : 264330153198

Option 1 ID : 264330600351

Option 2 ID : 264330600352

Option 3 ID : 264330600354

Option 4 ID : 264330600353

Status : Answered

Chosen Option : 4

Q.5 Parts of the following sentence have been given as options. Select the option that contains an error.

Tuntun and her friends dance beautiful.

- Ans
- ☒ 1. dance
 - ☒ 2. and her friends
 - ☒ 3. Tuntun
 - ☒ 4. beautiful

Question ID : 264330155228
Option 1 ID : 264330608369
Option 2 ID : 264330608368
Option 3 ID : 264330608367
Option 4 ID : 264330608370
Status : Answered
Chosen Option : 4

Q.6 Select the most appropriate idiom to fill in the blank.
It's risky to invest all your savings in one company; it's like _____.

- Ans
- ☒ 1. going down in flames
 - ☒ 2. putting all your eggs in one basket
 - ☒ 3. biting the bullet
 - ☒ 4. breaking a leg

Question ID : 264330155216
Option 1 ID : 264330608324
Option 2 ID : 264330608325
Option 3 ID : 264330608326
Option 4 ID : 264330608323
Status : Answered
Chosen Option : 2

Q.7 Select the option that can be used as a one-word substitute for the underlined group of words.

Sometimes we have to accept replacing something with something else, if we want to move forward.

- Ans
- ☒ 1. evaluation
 - ☒ 2. change
 - ☒ 3. invasion
 - ☒ 4. invention

Question ID : 264330153492
Option 1 ID : 264330601485
Option 2 ID : 264330601486
Option 3 ID : 264330601483
Option 4 ID : 264330601484
Status : Answered
Chosen Option : 1

Q.8 Select the most appropriate ANTONYM of the given word.
Dishevelled

- Ans ☒ 1. Assertive
☒ 2. Tidy
☒ 3. Tainted
☒ 4. Rigid

Question ID : 264330152720
Option 1 ID : 264330598480
Option 2 ID : 264330598482
Option 3 ID : 264330598481
Option 4 ID : 264330598479
Status : Not Answered
Chosen Option : --

Q.9 Select the most appropriate option to fill in the blank.
I _____ to many countries to find the source of true happiness.

- Ans ☒ 1. triveled
☒ 2. travelled
☒ 3. travalled
☒ 4. travelld

Question ID : 264330153304
Option 1 ID : 264330600773
Option 2 ID : 264330600772
Option 3 ID : 264330600771
Option 4 ID : 264330600774
Status : Answered
Chosen Option : 2

Q.10 Select the INCORRECTLY spelt word.

- Ans ☒ 1. Abhorrent
☒ 2. Jugglary
☒ 3. Gesture
☒ 4. Magnificence

Question ID : 264330152785
Option 1 ID : 264330598734
Option 2 ID : 264330598732
Option 3 ID : 264330598731
Option 4 ID : 264330598733
Status : Answered
Chosen Option : 1

Q.11 Select the most appropriate meaning of the underlined idiom in the following sentence.

Irrespective of the chaos in the classroom, our class teacher stays cool as a cucumber.

- Ans ☒ 1. Stays calm and composed
☒ 2. Behaves like a vegetable
☒ 3. Scolds all the students in the classroom
☒ 4. Develops a fever

Question ID : 264330153050
 Option 1 ID : 264330599768
 Option 2 ID : 264330599767
 Option 3 ID : 264330599770
 Option 4 ID : 264330599769
 Status : Answered
 Chosen Option : 1

Q.12 Select the most appropriate synonym of the given word.
Hazard

- Ans ☒ 1. Marvel
☒ 2. Miracle
☒ 3. Ardent
☒ 4. Accident

Question ID : 264330151822
 Option 1 ID : 264330594917
 Option 2 ID : 264330594916
 Option 3 ID : 264330594918
 Option 4 ID : 264330594915
 Status : Answered
 Chosen Option : 4

Q.13 Select the most appropriate option to fill in the blank.
He is a smug and very _____ person who thinks only about himself.

- Ans ☒ 1. arsonist
☒ 2. diffident
☒ 3. egoistic
☒ 4. humble

Question ID : 264330153582
 Option 1 ID : 264330601826
 Option 2 ID : 264330601824
 Option 3 ID : 264330601825
 Option 4 ID : 264330601823
 Status : Answered
 Chosen Option : 3

Q.14 Select the word segment which substitutes the bracketed word correctly and completes the sentence meaningfully.
I (am here) since 1981.

- Ans ☒ 1. have been here
☐ 2. had been here
☐ 3. was here
☐ 4. has been here

Question ID : 264330152566
Option 1 ID : 264330597869
Option 2 ID : 264330597867
Option 3 ID : 264330597868
Option 4 ID : 264330597870
Status : Answered
Chosen Option : 1

Q.15 Parts of the following sentence have been given as options. Select the option that contains an error.
You shall repented tomorrow for your misdeeds.

- Ans ☐ 1. for your misdeeds
☐ 2. tomorrow
☒ 3. shall repented
☐ 4. You

Question ID : 264330152815
Option 1 ID : 264330598854
Option 2 ID : 264330598853
Option 3 ID : 264330598852
Option 4 ID : 264330598851
Status : Answered
Chosen Option : 3

Q.16 Select the most appropriate option that can substitute the underlined segment in the given sentence.

She think Alex is abandoning her.

- Ans ☐ 1. was thinking
☐ 2. thought
☒ 3. thinks
☐ 4. was to think

Question ID : 264330153487
Option 1 ID : 264330601464
Option 2 ID : 264330601465
Option 3 ID : 264330601466
Option 4 ID : 264330601463
Status : Answered
Chosen Option : 3

Q.17 Select the most appropriate segment that can substitute the bracketed word in the following sentence.
The bridge that (connecting) the two valleys across the Brahmaputra river has recently been constructed in Arunachal Pradesh.

- Ans
- ☒ 1. will be connecting
 - ☒ 2. had connected
 - ☒ 3. will be connected
 - ☒ 4. connects

Question ID : 264330152631

Option 1 ID : 264330598127

Option 2 ID : 264330598130

Option 3 ID : 264330598128

Option 4 ID : 264330598129

Status : Answered

Chosen Option : 4

Q.18 Select the most appropriate idiom to fill in the blank.
Naina has six children, and I always _____ with their names.

- Ans
- ☒ 1. get mixed up
 - ☒ 2. get rid of
 - ☒ 3. get away clean
 - ☒ 4. get cold feet

Question ID : 264330153100

Option 1 ID : 264330599963

Option 2 ID : 264330599966

Option 3 ID : 264330599965

Option 4 ID : 264330599964

Status : Answered

Chosen Option : 1

Q.19 Select the most appropriate option to fill in the blank.
When it comes to planning her wedding, Maria wants _____.

- Ans
- ☒ 1. down for the count
 - ☒ 2. a black sheep
 - ☒ 3. the whole fifteen miles
 - ☒ 4. the whole nine yards

Question ID : 264330151884

Option 1 ID : 264330595158

Option 2 ID : 264330595155

Option 3 ID : 264330595156

Option 4 ID : 264330595157

Status : Not Answered

Chosen Option : --

Q.20 Select the most appropriate option to fill in the blank.

I know that I can count on my best friend to be by my side through ____ and thin.

- Ans
- ☒ 1. tough
 - ☒ 2. heavy
 - ☒ 3. thick
 - ☒ 4. fat

Question ID : 264330151861
Option 1 ID : 264330595063
Option 2 ID : 264330595066
Option 3 ID : 264330595064
Option 4 ID : 264330595065
Status : Answered
Chosen Option : 3

Comprehension:

In the following passage, some words have been deleted. Read the passage carefully and select the most appropriate option to fill in each blank.

I do not know how the party ended. I do not want to know. I went (1)____ upstairs, and undressed and (2)____ into bed, and lay there in the burning dark while the last guest gurgled in the hall below about the wonderful evening she had spent. I lay there (3)____ the front door shut after her, and Lavinia's steps came up the stairs and passed the door to the guest room beyond. And then after a couple of centuries (4)____, the clock struck three and I (5)____ to sleep.

SubQuestion No : 21

Q.21 Select the most appropriate option to fill in blank no. 1.

- Ans
- ☒ 1. over
 - ☒ 2. through
 - ☒ 3. around
 - ☒ 4. straight

Question ID : 264330151843
Option 1 ID : 264330594996
Option 2 ID : 264330594998
Option 3 ID : 264330594995
Option 4 ID : 264330594997
Status : Answered
Chosen Option : 4

Comprehension:

In the following passage, some words have been deleted. Read the passage carefully and select the most appropriate option to fill in each blank.
 I do not know how the party ended. I do not want to know. I went (1)___ upstairs, and undressed and (2)___ into bed, and lay there in the burning dark while the last guest gurgled in the hall below about the wonderful evening she had spent. I lay there (3)___ the front door shut after her, and Lavinia's steps came up the stairs and passed the door to the guest room beyond. And then after a couple of centuries (4)___, the clock struck three and I (5)___ to sleep.

SubQuestion No : 22

Q.22 Select the most appropriate option to fill in blank no. 2.

- Ans

✖ 1. gnawed
 ✖ 2. lurched
 ✖ 3. peeped
 ✔ 4. crawled

Question ID : 264330151844
 Option 1 ID : 264330595001
 Option 2 ID : 264330595000
 Option 3 ID : 264330594999
 Option 4 ID : 264330595002
 Status : Answered
 Chosen Option : 2

Comprehension:

In the following passage, some words have been deleted. Read the passage carefully and select the most appropriate option to fill in each blank.
 I do not know how the party ended. I do not want to know. I went (1)___ upstairs, and undressed and (2)___ into bed, and lay there in the burning dark while the last guest gurgled in the hall below about the wonderful evening she had spent. I lay there (3)___ the front door shut after her, and Lavinia's steps came up the stairs and passed the door to the guest room beyond. And then after a couple of centuries (4)___, the clock struck three and I (5)___ to sleep.

SubQuestion No : 23

Q.23 Select the most appropriate option to fill in the blank no. 3.

- Ans

✖ 1. still
 ✖ 2. toward
 ✔ 3. while
 ✖ 4. down

Question ID : 264330151845
 Option 1 ID : 264330595004
 Option 2 ID : 264330595005
 Option 3 ID : 264330595003
 Option 4 ID : 264330595006
 Status : Answered
 Chosen Option : 3

Comprehension:

In the following passage, some words have been deleted. Read the passage carefully and select the most appropriate option to fill in each blank.

I do not know how the party ended. I do not want to know. I went (1)___ upstairs, and undressed and (2)___ into bed, and lay there in the burning dark while the last guest gurgled in the hall below about the wonderful evening she had spent. I lay there (3)___ the front door shut after her, and Lavinia's steps came up the stairs and passed the door to the guest room beyond. And then after a couple of centuries (4)___, the clock struck three and I (5)___ to sleep.

SubQuestion No : 24

Q.24 Select the most appropriate option to fill in blank no. 4.

- Ans
- ☒ 1. crossed
 - ☒ 2. eroded
 - ☒ 3. elapsed
 - ☒ 4. persisted

Question ID : 264330151846

Option 1 ID : 264330595008

Option 2 ID : 264330595010

Option 3 ID : 264330595009

Option 4 ID : 264330595007

Status : Answered

Chosen Option : 3

Comprehension:

In the following passage, some words have been deleted. Read the passage carefully and select the most appropriate option to fill in each blank.

I do not know how the party ended. I do not want to know. I went (1)___ upstairs, and undressed and (2)___ into bed, and lay there in the burning dark while the last guest gurgled in the hall below about the wonderful evening she had spent. I lay there (3)___ the front door shut after her, and Lavinia's steps came up the stairs and passed the door to the guest room beyond. And then after a couple of centuries (4)___, the clock struck three and I (5)___ to sleep.

SubQuestion No : 25

Q.25 Select the most appropriate option to fill in blank no. 5.

- Ans
- ☒ 1. dozed off
 - ☒ 2. called off
 - ☒ 3. took off
 - ☒ 4. put off

Question ID : 264330151847

Option 1 ID : 264330595014

Option 2 ID : 264330595011

Option 3 ID : 264330595013

Option 4 ID : 264330595012

Status : Answered

Chosen Option : 1