



DO NOT OPEN THIS TEST BOOKLET UNTIL YOU ARE ASKED TO DO SO

Test Booklet Series

T.B.C. : AS – 23/24

A

# TEST BOOKLET

## MEDICAL OFFICER

### (ASSISTANT SURGEON)

Serial No.

1721

Time Allowed : 3 hrs.

Maximum Marks : 200

## INSTRUCTIONS TO CANDIDATES

1. Immediately after commencement of the examination, you should check that this Test Booklet does not have any unprinted or torn or missing pages or items etc. If so, get it replaced by a complete Test Booklet of same series issued to you.
2. Encode clearly the Test Booklet Series A, B, C or D, as the case may be, in the appropriate places in the Answer Sheet using ball point pen (blue or black).
3. You have to enter your **Roll No.** on the Test Booklet in the Box provided along side.   
**DO NOT** write anything else on the Test Booklet.
4. **You are required to fill up and darken Roll No., Test Booklet/Question Booklet Series in the Answer Sheet as well as fill up Test Booklet/Question Booklet Series and Serial No. and Answer Sheet Serial No. in the attendance sheets carefully. Wrongly filled up Answer Sheets are liable for rejection at the risk of the candidate.**
5. This Test Booklet contains **200** items (questions). Each item (question) comprises four responses (answers). You will select the correct response (answer) which you want to mark (darken) on the Answer Sheet. In case, you feel that there is more than one correct response (answer), mark (darken) the response (answer) which you consider the best. In any case, choose **ONLY ONE** response (answer) for each item (question).
6. You have to mark (darken) all your responses (answers) **ONLY** on the **separate Answer Sheet** provided, by using **BALL POINT PEN (BLUE OR BLACK)**. See instructions in the Answer Sheet.
7. All items (questions) carry equal marks. All items (questions) are compulsory. Your total marks will depend only on the number of correct responses (answers) marked by you in the Answer Sheet. **There shall be no negative marking for wrong answers.**
8. Before you proceed to mark (darken) in the Answer Sheet, the responses (answers) to various items (questions) in the Test Booklet, you have to fill in some particulars in the Answer Sheet as per instructions sent to you with your **Admission Certificate**.
9. After you have completed filling in all your responses on the Answer Sheet and after conclusion of the examination, you should handover to the Invigilator the Answer Sheet issued to you. You are allowed to take with you the candidate's copy/second page of the Answer Sheet along with the **Test Booklet**, after completion of the examination, for your reference.
10. Sheets for rough work are appended in the Test Booklet at the end.

DO NOT OPEN THIS TEST BOOKLET UNTIL YOU ARE ASKED TO DO SO

SEAL

# Test Prime

**ALL EXAMS,  
ONE SUBSCRIPTION**



**70,000+**  
Mock Tests



**Personalised  
Report Card**



**Unlimited  
Re-Attempt**



**600+**  
Exam Covered



**Previous Year  
Papers**



**500%**  
Refund



**ATTEMPT FREE MOCK NOW**





AS – 23/24

1. Select the incorrect statement about the temporomandibular joint.
  - (A) It is a synovial joint of condylar variety
  - (B) Its articular surfaces are covered by hyaline cartilage
  - (C) It is innervated by auriculotemporal and masseteric nerves
  - (D) The articular surface of the mandibular condyle is tilted forward at approximately  $25^\circ$  to the occlusal plane
2. All of the following structures passing deep to posterior border of Hyoglossus muscle, except
  - (A) Stylohyoid ligament
  - (B) Glossopharyngeal nerve
  - (C) Stylohyoid muscle
  - (D) Lingual artery
3. Transverse section of the medulla at the level of Olives shows all of the following nuclei, except
  - (A) Hypoglossal nucleus
  - (B) Dorsal motor nucleus of the vagus
  - (C) Nucleus cuneatus
  - (D) Nucleus solitaries
4. All of the following statement about the cervical sympathetic trunk are true, except
  - (A) It lies in front of the transverse process of cervical vertebrae and neck of the first rib
  - (B) It receives the preganglionic fibre through the white rami communicantes of cervical spinal nerves
  - (C) It possesses three ganglia
  - (D) Its injury leads to Horner's syndrome
5. In articulated skull, maxillary hiatus is reduced in size by all of the following bones, except
  - (A) Uncinate process of ethmoid
  - (B) Descending process of lacrimal
  - (C) Horizontal plate of palatine
  - (D) Maxillary process of inferior nasal concha
6. Damage to the pituitary stalk during surgery cause increase in which of the following Hormone ?
  - (A) TSH
  - (B) GH
  - (C) Prolactin
  - (D) Dopamine
7. Following changes are seen during capacitation of the sperms, except
  - (A) Decreases permeability to calcium
  - (B) Removal of cholesterol from acrosome
  - (C) Increased motility
  - (D) None of the above
8. Oxygen haemoglobin dissociation curve shifts to right in all of the following conditions, Except
  - (A) Hyperthermia
  - (B) Decreased pH
  - (C) Decreased  $H^+$
  - (D) Increased  $CO_2$
9. Glucose transporter affected in Diabetes Mellitus
  - (A) GLUT-2
  - (B) GLUT-5
  - (C) GLUT-4
  - (D) SGLT-2



AS – 23/24

10. According to Frank Starling law, the extent of preload is proportional to
  - (A) Increase heart rate
  - (B) End diastolic volume
  - (C) End systolic volume
  - (D) Ejection systolic volume
11. Which one of the following statements is incorrect ?
  - (A) Cholesterol is required for the synthesis of membranes, steroid hormones and bile acids
  - (B) Cholesterol esters are present on the surface of lipoprotein particles
  - (C) Glucagon and insulin have roles in regulation of cholesterol production by inhibiting and activating HMG-CoA reductase enzyme respectively
  - (D) Statins are competitive inhibitors of HMG-CoA reductase
12. Which of the following sentences is an incorrect one ?
  - (A) Tetracyclines inhibit bacterial protein synthesis by blocking the A site in ribosomes
  - (B) Chloramphenicol inhibit bacterial protein synthesis in ribosomes by blocking peptidyl transferase
  - (C) Diphtheria toxin causes ADP ribosylation of a eukaryotic elongation factor, eEF2 and causes inactivation of it
  - (D) Ricin is relatively non-toxic to 60S of eukaryotic ribosomes
13. What is the reference range of serum sodium ?
  - (A) 120 – 130 mmol/L
  - (B) 125 – 140 mmol/L
  - (C) 136 – 145 mmol/L
  - (D) 140 – 150 mmol/L
14. Which one of the following amino acids is purely ketogenic ?
  - (A) Leucine
  - (B) Valine
  - (C) Threonine
  - (D) Isoleucine
15. Which statement concerning insulin is an incorrect one ?
  - (A) It's an anabolic hormone in glycogen, triacylglycerols and protein metabolism
  - (B) Epinephrine promotes insulin release
  - (C) Erythrocytes and cells of nervous system do not require insulin for glucose uptake
  - (D) Insulin and glycogen have significant roles in integration of energy metabolism
16. Which one of the following is not a feature of Polymerase Chain Reaction (PCR) ?
  - (A) Used for amplifying a target sequence of DNA
  - (B) 2 primers are used for the purpose
  - (C) Annealed primers are extended by DNA polymerase
  - (D) Not useful for studying evolution





AS – 23/24

17. Which enzyme is affected in acute intermittent porphyria ?
- Coproporphyrinogen oxidase
  - Ferrochelatase
  - Uroporphyrinogen decarboxylase
  - Uroporphyrinogen 1 synthetase
18. Which vitamin or forms of vitamin is not involved in the TCA cycle ?
- Riboflavin, in the form of flavin adenine dinucleotide (FAD)
  - Niacin, in the form of nicotinamide adenine dinucleotide (NAD)
  - Vit. B<sub>1</sub> as thiamine pyrophosphate (TPP)
  - Vit. B<sub>6</sub> as pyridoxal phosphate (PLP)
19. Which of the following is not a characteristic feature of respiratory chain ?
- It occurs in the mitochondria
  - When a substrate is oxidized via a FAD-linked dehydrogenase, 2 mols of ATP are formed
  - The process of ATP production in the respiratory chain is known as oxidative phosphorylation
  - A large number of production of ATPs also occurs in metabolic pathways other than in respiratory chain complexes
20. Which of the following is not a feature of amino acid metabolism ?
- Carbon skeletons are catabolized to amphibolic intermediates
  - Act as substrates for carbohydrate and lipid biosynthesis
  - Transsulfuration removes the  $\alpha$ -amino nitrogen of amino acids
  - The complete reactions of urea cycle takes place in the liver
21. A young man 26 years old is started treated for pulmonary tuberculosis. He comes to the medical OPD after 1 week with complaint of orange red colored urine and sweat and tears. Which of the following drugs is most likely causing these symptoms ?
- Streptomycin
  - Rifampicin
  - Ethambutol
  - Pyrazinamide
22. Quinidine causes paradoxical tachycardia in a patient of
- Atrial fibrillation
  - Sick sinus syndrome
  - Atrial extra systole
  - Ventricular extra systole
23. Low doses of heparin prolong
- BT
  - aPTT
  - PT
  - Both aPTT and PT



AS – 23/24

24. An AIDS patient, who is being treated with multiple drugs, develops breast hypertrophy, central adiposity, hyperlipidemia, insulin resistance and nephrolithiasis. If these changes are related to his drug treatment, this drug belongs to which group of anti-retroviral drugs ?
- Nucleoside Reverse Transcriptase Inhibitors (NRTIS)
  - Non-nucleoside Reverse Transcriptase Inhibitors (NNRTIS)
  - Fusion Inhibitors
  - Protease Inhibitors
25. Depressive states are best treated with drugs that
- inhibit serotonin uptake
  - affect cholinergic activity in brain
  - block adrenoceptor in brain
  - inhibit dopamine uptake
26. Bisphosphonates are beneficial in following conditions, EXCEPT
- Paget's disease
  - Senile osteoporosis
  - Osteolytic bony metastasis
  - Rickets
27. Select the drug of granulocyte colony-stimulating factor.
- Filgrastim
  - Methotrexate
  - Erythropoietin
  - Doxorubicin
28. Drug used in aplastic anemia
- Fercoven
  - Cyanocobalamine
  - Epoetin alpha
  - Folic acid
29. Which one is the Cell cycle Non-specific antineoplastic drug ?
- Vincristine
  - Bleomycin
  - Methotrexate
  - 5-Flurouracil
30. The MAC of an inhalational anesthetic is a measure of
- Diffusibility
  - Potency
  - Therapeutic index
  - Oil-water partition coefficient
31. All the following are feature of Barrett's esophagus, EXCEPT
- Intestinal metaplasia is seen on biopsies
  - Presents between 40 to 60 years
  - Share mutation with oesophageal adenocarcinoma
  - Majotity of patients with Barrets develop adenocarcinoma
32. Hydrops fetalis can be seen with
- $\alpha$ -thalassemia
  - $\beta$ -thalassemia minor
  - Christmas disease
  - Sickle cell anaemia





AS – 23/24

33. Microscopic hematuria in nephritic syndrome is characterized by presence of
- Dysmorphic red cells
  - Isomorphic red cells
  - Crenated red cells
  - Spherocytic red cells
34. Which of the following conditions is associated with unconjugated hyperbilirubinemia ?
- Dubin-Johnson syndrome
  - Rotor syndrome
  - Gilbert syndrome
  - Obstructive cholestasis
35. Cell-Exner bodies on light microscopic examination are seen in
- Mature teratoma
  - Endodermal sinus tumor
  - Granulosa cell tumor
  - Sertoli Leydig cell tumor
36. Most common malignant CNS tumor in children is
- Medulloblastoma
  - Ependymoma
  - Astrocytoma
  - PNET
37. Immunohistochemistry for calcitonin is positive in which malignancy of thyroid ?
- Papillary carcinoma
  - Medullary carcinoma
  - Anaplastic carcinoma
  - Follicular carcinoma
38. All are true about adrenal pheochromocytoma, EXCEPT
- Composed of chromaffin cells
  - Zellbellen pattern seen on histology
  - 10% of cases are extra adrenal
  - 10% of cases present with hypertension
39. Which histochemical stain is used for demonstration of fungal hyphae ?
- Luxol fast blue
  - PAS
  - Masson's trichome
  - Giemsa
40. What inheritance pattern is seen in "Adult polycystic kidney disease" by
- Autosomal recessive
  - X-linked
  - Autosomal dominant
  - Mitochondrial
41. The vector for transmission of Lyme disease is
- Rat flea
  - Tick
  - Mite
  - Mosquito
42. Hereditary angioneurotic edema is a complication due to which complement protein deficiency ?
- C1
  - C2
  - C1 inhibitor
  - C2 inhibitor



AS – 23/24

43. Fitz-Hugh Curtis syndrome is a complication of infection due to  
(A) *Neisseria gonorrhoeae*  
(B) *Neisseria meningitidis*  
(C) *Chlamydia trachomatis*  
(D) *Ureaplasma ureolyticum*
44. White piedra is caused by  
(A) *Piedraia hortae*  
(B) *Trichosporon beigeli*  
(C) *Malassezia furfur*  
(D) *Cladosporium wernickii*
45. Demonstration of 'Sclerotic bodies' in biopsy specimen from subcutaneous lesion is suggestive of which condition ?  
(A) *Lepromatus leprosy*  
(B) *Chromoblastomycosis*  
(C) *Rhinosporidiosis*  
(D) *Eumycotic mycetoma*
46. Aflatoxin is produced by which fungus ?  
(A) *Claviceps purpurea*  
(B) *Aspergillus flavus*  
(C) *Fusarium solani*  
(D) *Madurella mycetomatis*
47. Example of heterophile agglutination test is  
(A) Widal test  
(B) VDRL test  
(C) Paul-Bunnell test  
(D) Rose Waller test
48. The food responsible for food poisoning due to *Bacillus cereus* is  
(A) Ice cream  
(B) Canned food  
(C) Honey  
(D) Chinese fried rice
49. Example of thermophilic dimorphic fungus is  
(A) *Candida albicans*  
(B) *Cryptococcus neoformans*  
(C) *Trichosporon beigeli*  
(D) *Histoplasma capsulatum*
50. All of the following are the examples of opportunistic infections in AIDS EXCEPT  
(A) *Candida albicans*  
(B) *Cryptococcus neoformans*  
(C) *Cryptosporidium parvum*  
(D) *Trichophyton rubrum*
51. All of the following are aryl phosphates except  
(A) Parathion  
(B) Malathion  
(C) Diazinon  
(D) Chlorthion
52. Acrodynia is seen in which poisoning ?  
(A) Phosphorus  
(B) Lead  
(C) Arsenic  
(D) Mercury





AS – 23/24

53. Clinical features of organophosphorus poisoning are all except  
(A) Lacrimation  
(B) Bradycardia  
(C) Dilated pupil  
(D) Sweating
54. Which of the following is of isoquinoline group ?  
(A) Papaverine  
(B) Morphine  
(C) Codeine  
(D) Thebaine
55. Formication is a type of  
(A) Auditory hallucination  
(B) Tactile hallucination  
(C) Olfactory hallucination  
(D) Visual hallucination
56. Sternal index is useful to estimate  
(A) Race of a person  
(B) Sex of a person  
(C) Diatoms in cases of drowning  
(D) Complexion of a person
57. Limitation period for filing a complaint under Consumer Protection Act is  
(A) 6 months  
(B) 2 years  
(C) 5 years  
(D) No time limit
58. Judicial execution is practiced in India by  
(A) Electrocution  
(B) Lynching  
(C) Garroting  
(D) Judicial hanging
59. Section 317 of IPC deals with punishment for  
(A) Voluntarily causing hurt  
(B) Voluntarily causing grievous hurt by dangerous weapon  
(C) Exposure and abandonment of child less than 12 years of age  
(D) Attempt to commit suicide
60. Which of the following is the age of mixed dentition ?  
(A) 6 to 11 years  
(B) 14 to 18 years  
(C) 6 months to 2 years  
(D) More than 55 years
61. Compressed air is used to fire lead slugs in  
(A) Air rifle  
(B) Shotgun  
(C) Revolver  
(D) Automatic pistols
62. Dermal nitrate test detects  
(A) Blood stains  
(B) Nerve gas poisoning  
(C) Seminal stains  
(D) Gun powder residue
63. Atavism is resemblance of features to  
(A) Father  
(B) Grandfather  
(C) Mother  
(D) Neighbour



AS – 23/24

64. Method of autopsy in which organs are removed one by one is called  
(A) Virchow's method  
(B) Lettule method  
(C) Ruxton method  
(D) Ghon's technique
65. Permanent molars are  
(A) Super-added permanent teeth  
(B) Successional permanent teeth  
(C) Usually thirteen in number  
(D) Rudimentary teeth
66. Classical Dengue fever is transmitted by  
(A) Culex fatigans  
(B) Culex vishnui  
(C) Aedes aegypti  
(D) Glossina palpalis
67. Women travelling from Bihar to Delhi is suspecting to have Kala-azar. Suitable investigation is  
(A) P24 antigen  
(B) rk – 39 test  
(C) Combo RDT  
(D) HRP – 2 antigen
68. Most effective to prevent HIV vertical transmission is  
(A) HAART  
(B) Nevirapine  
(C) Zidovudine  
(D) Elective CS
69. Which of the primordial prevention strategies is not for Coronary Heart Disease (CHD) ?  
(A) Take healthy diet containing adequate amounts of macro and micro nutrients  
(B) Regular physical activities  
(C) Management of hypertension and diabetes  
(D) Prevention of tobacco use
70. All of the following sites are used for measuring skin fold thickness to assess obesity excepts  
(A) Mid triceps  
(B) Biceps  
(C) Sub scapular  
(D) Anterior abdominal wall
71. In RMNCH + A Strategy, what is plus ?  
(A) Adolescent health  
(B) Reproductive health  
(C) DPT vaccination  
(D) New born vaccination
72. Laboratory report of disease sent as L-form in IDSP is  
(A) Syndromic diagnosis  
(B) Presumptive diagnosis  
(C) Confirmed diagnosis  
(D) Active surveillance





AS – 23/24

73. What is net reproduction rate ?

- (A) No. of children a new born girl has in her life time
- (B) No. of female children a new born girl has in her life time
- (C) No. of male children a new born girl has in her life time
- (D) No. of female children a new born girl has in her life time taking into accounts mortality

74. Perinatal mortality rate includes

- (A) Death within first week of life
- (B) Abortions, stillbirth, death within first week of life
- (C) Death within 28 weeks of gestation to the first week of life
- (D) Death within one month of life

75. Glycemic index denotes

- (A) Food's ability to stimulate insulin release
- (B) Food's ability to stimulate glucagon release
- (C) Food's ability to raise blood sugar
- (D) All are correct

76. Food standards in India have to achieve a minimum level of quality under

- (A) Codex Alimentarius
- (B) Bureau of Indian Standards
- (C) Agmark Standards
- (D) PFA Standards

77. Social pathology is

- (A) Change in disease pattern due to change in life style
- (B) Study of social problems which cause disease population
- (C) Conflicts arising from new opportunities in transitional societies
- (D) Study of Human relationship and behavior

78. Green house effects do not includes

- (A) Carbon dioxide
- (B) Carbon monoxide
- (C) Water vapor
- (D) Methane

79. Hardy Weinberg law is related to

- (A) Gene Therapy
- (B) Human Genome Project
- (C) Population Genetics
- (D) Eugenics

80. In which model of Health Education does 'Internalization' occurs ?

- (A) Medical model
- (B) Socio environmental model
- (C) Service model
- (D) Motivation model

81. Carpet tack sign is seen in

- (A) Lichen planus
- (B) DLE
- (C) Eczema
- (D) Psoriasis



AS – 23/24

82. Majocchi's granuloma occurs most commonly due to
- Trychophyton rubrum
  - Candida albicans
  - Trychophyton mentagrophytes
  - Epidermophyton
83. Treatment of chronic and recurrent Type 2 reaction in Leprosy includes
- Prednisolone
  - Thalidomide
  - Clofazimine
  - All of these
84. Lichen Scrofulosorum is associated with
- Syphilis
  - Aspergillosis
  - Tuberculosis
  - Leprosy
85. Therapy of choice in acne conglobata is
- Dapsone
  - Isotretinoin
  - Tetracycline
  - None of these
86. A 13 years old girl is noted to have a curvature to her spine. Plain radiographs confirm the presence of a scoliosis with a convexity to the right. The most likely cause of this would be
- Neurofibromatosis
  - Idiopathic
  - Segmental abnormality
  - Osteoid osteoma
87. A nine months old presents with leukokoria. Which finding would favour a diagnosis of Persistent Hyperplastic Primary Vitreous (PHPV) rather than Retinoblastoma (RB) ?
- Calcification
  - Optic nerve enlargement
  - Retinal detachment
  - Microphthalmia
88. At a routine 20 weeks obstetric ultrasound scan, polyhydramnios with multiple foci of scattered calcifications are found throughout the fetal abdomen in between bowel loops. Which one of the following is most likely to be the underlying cause ?
- Mesenteric ischaemia
  - Meconium peritonitis
  - Meconium plug syndrome
  - Necrotising enterocolitis
89. The following constellation of findings in a ten years old girl suggests which of the following diagnoses ? Absent radius and ulna, wormian bones within the skull vault, hypoplasia of the distal third of the clavicle and accessory epiphyses of the distal phalanges.
- Klippel-Feil syndrome
  - Cleidocranial dysostosis
  - Pyknodysostosis
  - Achondroplasia





AS – 23/24

90. A neonate presents with jaundice, pale stools and hepatomegaly. A Tc-99m DISIDA scan shows good hepatic uptake at 15 minutes, but on delayed imaging at six and 24 hours no activity can be demonstrated within the bowel. Which one of the following is most likely to represent the underlying cause ?
- Congenital biliary atresia
  - Cystic fibrosis
  - Neonatal hepatitis
  - Spontaneous perforation of the bile ducts
91. Which of the following represents as first substrate of Kreb's cycle ?
- Malate
  - Aspartate
  - Glutamate
  - Pyruvate
92. Which of the following nerve is most commonly associated with intracranial aneurysm ?
- V
  - III
  - VIII
  - VII
93. Which one of the following statement is true regarding pathogenicity of Mycobacteria species ?
- M. tuberculosis* is more pathogenic than *M. bovis* to the humans
  - M. kansasii* can cause a disease indistinguishable from tuberculosis
  - M. africanum* infection is acquired from the environmental source
  - M. marinum* is responsible for tubercular lymphadenopathy
94. Third generation of cephalosporins includes all except
- Cefixime
  - Cefotaxime
  - Cefpodoxime proxetil
  - Cefoxitin
95. Salivary amylase is activated by
- Sodium
  - Potassium
  - Chloride
  - Iodine
96. An 82 years old retired teacher taking telmisartan 40 mg and hydrochlorthiazide 12.5 mg for hypertension has presented to the OPD with the complaint of feeling dizzy occasionally, especially when he stands up. His gait is normal. His blood pressure is 140/82 mm Hg while lying and 118/6 on standing. Which of the following steps may help in preventing falls ?
- Stop hydrochlorthiazide
  - Add amlodipine 5 mg daily
  - Ask him to use a stick
  - Ask him to increase salt intake
97. A 70 years old lady takes amlodipine 5 mg OD for hypertension and diclofenac 50 mg occasionally for osteoarthritis of her left knee. Her blood pressure is 124/82. Most of the recent blood reports including fasting blood sugar are normal. Her creatinine is 1.2 mg/dL which is the upper limit of normal. She is concerned about the possibility of further deterioration in her renal function. What would you advise ?
- Add telmisartan
  - Replace amlodipine with hydrochlorthiazide
  - Replace diclofenac with paracetamol
  - Add sodium bicarbonate orally



AS – 23/24

98. Mr. Bijay Pradhan, 68 has a BMI of 30. He was diagnosed as having non-alcoholic fatty liver disease on routine examination a few years ago. He has now been found to have a fasting blood sugar of 190 mm Hg. Which of the following is the most appropriate drug for him ?
- Metformin
  - Dapagliflozin
  - Sitagliptin
  - Insulin
99. A 65 years old lady has presented for her annual check-up. She has no previous history of falls or fractures. She attained menopause at the age of 51. She takes telmisartan 40 mg daily for hypertension. Which of the following is best for screening for osteoporosis ?
- Calcium, Vitamin D and Parathormone levels
  - X-ray lumbar spine
  - Skeletal survey with low dose CT
  - DEXA scan
100. A 67 years old lady has been diagnosed with type II diabetes recently. Which of the following is not an appropriate advice to prevent diabetic foot ?
- Wash feet daily
  - Cut toenails regularly
  - Walk barefoot on grass everyday
  - Wear comfortable shoes
101. A 62 years old man after total knee replacement surgery had been complaining of calf pain and swelling in his right leg for 2 days. He complains of severe breathlessness and goes into cardiac arrest. Which of the following is the most probable cause ?
- Pulmonary embolism
  - Myocardial infarction
  - Stroke
  - ARDS
102. A 25 years old male is found in altered sensorium in his room, having taken an unknown number of sleeping pills. An arterial blood sample yields the following values : pH 7.10,  $\text{HCO}_3^-$  12 mEq/L,  $\text{PaCO}_2$  66 mmHg. Which of the following describes his acid-base status most accurately ?
- Uncompensated metabolic acidosis
  - Respiratory acidosis with compensation
  - Mixed respiratory and metabolic acidosis
  - Uncompensated respiratory acidosis
103. A 29 years old man presents with sore throat. Two days later he develops hematuria. What is the probable diagnosis ?
- IgA nephropathy
  - Wegener's granulomatosis
  - Henoch-Schonlein purpura
  - Poststreptococcal glomerulonephritis





AS – 23/24

104. "Squatting attacks" and polycythemia are features of
- Cyanotic congenital heart disease
  - Acyanotic congenital heart disease
  - Eisenmenger syndrome
  - Lutembacher syndrome
105. Causes of hypercalcemia include all of the following except
- Multiple myeloma
  - Lytic skeletal metastasis
  - Sarcoidosis
  - Acute pancreatitis
106. Which of the following is classical CSF finding seen in tubercular meningitis ?
- Increased protein, decreased sugar, increased lymphocytes
  - Increased protein, sugar and lymphocytes
  - Decreased protein, increased sugar and lymphocytes
  - Increased sugar, protein and neutrophils
107. Which of the following findings is diagnostic of iron deficiency anemia ?
- Increased TIBC, decreased serum ferritin
  - Decreased TIBC, decreased serum ferritin
  - Increased TIBC, increased serum ferritin
  - Decreased TIBC, increased serum ferritin
108. U1RNP is characteristic of
- Systemic lupus erythematosus
  - Systemic sclerosis
  - Mixed connective tissue disease
  - Sjogren diseases
109. A young lady on methotrexate wants to start her family. What is the most appropriate step ?
- Methotrexate should be continued
  - Methotrexate should be replaced with leflunomide
  - Methotrexate should be replaced with hydroxychloroquine and sulfasalazine
  - She should be advised against starting a family
110. An 82 years old man is started on Clindamycin for leg cellulitis. Three days later, he develops lower abdominal pain and profuse watery diarrhea containing blood and mucus. The most likely cause is
- The action of clindamycin on the motilin receptors
  - Contamination of the hospital drinking water with salmonella species
  - Intestinal dysfunction due to the release of Toxic Shock Syndrome Toxin 1 (TSST1)
  - Clostridium difficile infection



AS – 23/24

111. A 19 years old student has been brought to the emergency with 2 days history of fever, headache and vomiting. The neck is rigid on examination. Microscopy of the CSF sample reveals gram negative cocci in pairs. Based on the local sensitivity pattern, you decide to treat her with benzyl penicillin. Which of the following is the best dosing schedule ?

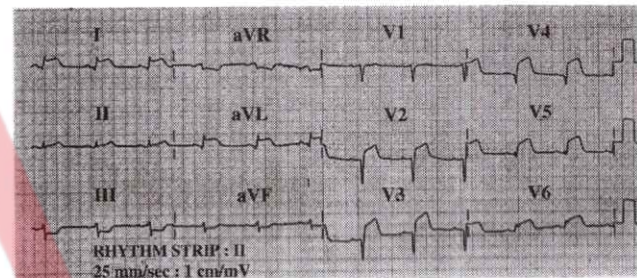
- (A) 4 hourly
- (B) 8 hourly
- (C) 12 hourly
- (D) A single intramuscular depot injection

112. A 60 years old man with poorly controlled diabetes was admitted with severe COVID-19. Two months later, he presents with a feeling of heaviness in the nose and facial pain. A careful examination reveals a black necrotic ulcer on the hard palate. Punch biopsy of the lesion shows broad branching hyphae invading the tissue. Which of the following agents will best treat the condition ?

- (A) Fluconazole
- (B) Posaconazole
- (C) Caspofungin
- (D) 5-fluorocytosine

113. A 62 years old male smoker has presented to the emergency with a 3 hours history of central chest pain. He describes it as if someone was sitting on his chest. There is no radiation. He has no known significant past medical history. On examination, BP is 160/92 and oxygen saturation is 92% on air. He looks anxious and sweaty. JVP is normal. There is no oedema. Heart sound are normal and chest is clear on auscultation.

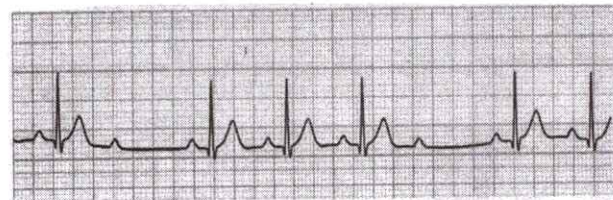
ECG is shown below :



What is the appropriate treatment ?

- (A) Antiplatelets and nitrates
- (B) Antiplatelets, nitrates and low-molecular weight heparin
- (C) Antiplatelets, nitrates and thrombolysis after ruling out contraindications
- (D) Intravenous beta-blocker

114. An 84 years old gentleman complaints of intermittent dizziness. His ECG rhythm strip is displayed below :



What is the diagnosis ?

- (A) Mobitz type I block
- (B) Mobitz type II block
- (C) Complete heart block
- (D) 3 : 1 block





AS – 23/24

115. Which of the following is a screening test for diagnosing Cushing's syndrome ?  
 (A) Serum cortisol-8am/4pm  
 (B) 24 hours urinary cortisol  
 (C) Serum ACTH  
 (D) MRI abdomen
116. Which part of the spine is most commonly affected in Rheumatoid Arthritis ?  
 (A) Cervical  
 (B) Lumbar  
 (C) Thoracic  
 (D) Sacral
117. A patient presents with macroglossia and loss of tongue papillae. Haemoglobin is 10.5 mg/dL and MCV is 105 fL. Which of the following investigations is likely to be most helpful in clinching the diagnosis ?  
 (A) Vitamin B12 estimation  
 (B) Serum iron studies  
 (C) Direct coombs test  
 (D) Haemoglobin electrophoresis
118. Which of the following is not a feature of cauda equina syndrome ?  
 (A) Brisk ankle jerk bilaterally  
 (B) Flaccid paralysis of the lower limbs  
 (C) Loss of peri-anal sensation  
 (D) Reduced anal tone
119. Which of the following is likely to cause increased vocal resonance ?  
 (A) Consolidation  
 (B) Pleural effusion  
 (C) Empyema  
 (D) Pneumothorax
120. A 23 years old BA student was diagnosed with Vivax malaria. He was treated with chloroquine. Which other drug should be prescribed to achieve a 'radical cure' ?  
 (A) Cotrimoxazole  
 (B) Proguanil  
 (C) Quinine  
 (D) Primaquine
121. AKI as per the KIDGO staging is defined as an increase in s creatinine by  $\geq 0.3$  mg/dL from baseline within  
 (A) 6 hrs  
 (B) 12 hrs  
 (C) 24 hrs  
 (D) 48 hrs
122. Continuous antibiotic prophylaxis duration in Acute Rheumatic Fever (ARF) in an 11 yrs old with no residual heart disease (no valvular involvement) is  
 (A) 5 yrs  
 (B) 10 yrs  
 (C) 20 yrs  
 (D) 40 yrs



AS – 23/24

123. Maximal intensive phototherapy using "special blue" fluorescent tubes must be placed within a distance of  
(A) 21 – 25 cm of the infant  
(B) 15 – 20 cm of the infant  
(C) 10 – 14 cm of the infant  
(D) 5 – 9 cm of the infant
124. The FIO<sub>2</sub> % during use of a nasal cannula in older children is  
(A) FIO<sub>2</sub> (%) = 21% + [Nasal cannula flow (L/min) × 2]  
(B) FIO<sub>2</sub> (%) = 21% + [Nasal cannula flow (L/min) × 3]  
(C) FIO<sub>2</sub> (%) = 21% + [Nasal cannula flow (L/min) × 4]  
(D) FIO<sub>2</sub> (%) = 21% + [Nasal cannula flow (L/min) × 5]
125. Reticulocytosis response to iron therapy in iron deficiency anemia occurs at  
(A) 12 hrs.  
(B) 24 hrs.  
(C) 36 hrs.  
(D) 48 hrs.
126. Which of the following is considered +ve result of Mantoux TST irrespective of BCG immunization status in children in close contact with known or suspected contagious people with tuberculosis disease ?  
(A) Induration ≥ 5 mm  
(B) Induration ≥ 10 mm  
(C) Induration ≥ 15 mm  
(D) Induration ≥ 20 mm
127. Ventricular Tachycardia (VT) is defined in a child with HR of >120 beats/min and at least  
(A) 1 PVC (Premature Ventricular Contraction)  
(B) 2 PVCs  
(C) 3 PVCs  
(D) 4 PVCs
128. For initial treatment of penicillin-allergic individuals and those with suspected serious infections caused by MRSA, the choice of therapy is  
(A) Vancomycin  
(B) Amoxycillin + Clavulanate  
(C) Cefazolin  
(D) Dicloxacillin
129. In spirometry, bronchodilator response consistent with asthma response with an improvement of FEV<sub>1</sub> to an inhaled β-agonist is  
(A) ≥ 6 %  
(B) ≥ 12 %  
(C) ≥ 18 %  
(D) ≥ 24 %
130. Which of the following is a clinical clue to diagnose complex febrile seizure ?  
(A) Seizure for > 5 minutes  
(B) Seizure for > 10 minutes  
(C) Seizure for > 15 minutes  
(D) Seizure for > 20 minutes





AS – 23/24

131. Dose of Radiation per X-ray Mammogram film is  
(A) 1 Gy  
(B) 1 cGy  
(C) 1 mGy  
(D) 0.1 Gy
132. Paralytic ileus is failure to pass stool or inability to tolerate oral intake, occurs how many hours of after surgery ?  
(A) 24  
(B) 48  
(C) 72  
(D) 96
133. Excision/core needle biopsy of a breast cyst is recommended for recurrence after how many aspiration ?  
(A) 2  
(B) 3  
(C) 4  
(D) 5
134. Regarding the emergency surgery for ulcerative colitis, false statement is  
(A) Subtotal colectomy + End ileostomy is safest procedure  
(B) Closer resection of mesocolon towards colon is done in UC  
(C) Emergency laparoscopic surgery has no role  
(D) Restorative surgery can be done electively later
135. Fifty five years gentle male presented with right flank pain, dysuria, discomfort, pyrexia, malaise, flank tenderness, palpable mass and irritative voiding symptoms. Urine culture showing E. coli and CT scan showing enlarged, non-functioning kidney, presence of calculi and low density masses and involvement of adjacent structures. Which of the following is right treatment ?  
(A) Nephrectomy  
(B) Broad spectrum antibiotics  
(C) DJ stenting  
(D) Percutaneous Nephrostomy
136. All of the following statements are correct regarding ESWL except  
(A) Gold standard lithotripter dormier HM – 3  
(B) Steinstrasse is seen in cases of distal ureteral obstruction  
(C) Pregnancy is an absolute contraindication  
(D) Maximum size of stone removed is 1.5 cm
137. Angiomyolipoma is associated with which syndrome ?  
(A) Neurofibromatosis type – 1  
(B) Neurofibromatosis type – 2  
(C) Tuberous sclerosis  
(D) Von-Hippel-Lindau syndrome
138. The most common malignant tumour in children which occurs very rare in its pure form in adult  
(A) Seminoma  
(B) Lymphoma  
(C) Teratoma  
(D) Yolk sac tumor



AS – 23/24

139. What is the ratio of mixture of sclerosant agent and air use in Tessari method ?  
 (A) 1 : 4  
 (B) 2 : 5  
 (C) 4 : 1  
 (D) 3 : 1
140. 13 years boy was brought by his father to the clinic. He has bilateral undescended testes and underdeveloped scrotum. Histological changes in the testis can be seen by the age of  
 (A) 1 yr  
 (B) 2 yrs  
 (C) 3 yrs  
 (D) 4 yrs
141. Identify the correct order of applying 4 layers bandaging system.  
 a. Cotton crepe  
 b. Cohesive bandage  
 c. Elastic bandage  
 d. Orthopedic wool  
 (A) a, b, c, d  
 (B) a, d, b, c  
 (C) d, a, c, b  
 (D) d, a, c, b
142. Only definite treatment for secondary hyperparathyroidism  
 (A) Subtotal parathyroidectomy  
 (B) Total parathyroidectomy and auto transplantation  
 (C) Total parathyroidectomy only  
 (D) Renal transplantation key
143. Regarding primary sclerosing cholangitis- false statement is  
 (A) Mainly affects young men in 30s  
 (B) New or dominant stricture-suspect cholangiocarcinoma  
 (C) GB polyp must always be removed  
 (D) CA 19-9 is highly sensitive
144. A patient with abdominal pain is evaluated by colonoscopy and found carcinoma in the Splenic flexure. Site of severe pain is  
 (A) Left upper quadrant  
 (B) Periumbilical  
 (C) Suprapubic  
 (D) Loin pain
145. A forty years gentleman presented in emergency with the redness of face, breathing difficulty and loose stools after binge drinking. CT abdomen shows growth in the jejunum. What is the heart defect present in this patient ?  
 (A) Mitral regurgitation  
 (B) Tricuspid stenosis  
 (C) Pulmonary regurgitation  
 (D) Mitral stenosis
146. A patient present with loose stools and also blood in the stools. Colonoscopy done and found ulceration and bleeding in the rectum. Ulcerative colitis diagnosis made and treated with mesalamine. But no response seen. What may be the cause of this condition ?  
 (A) Amoebiasis  
 (B) Yersiniosis  
 (C) Salmonella enteridis  
 (D) Campylobacter jejuni





AS – 23/24

147. A Government Hospital Management has issued serious scrutiny against unwanted scans. An intern working in the hospital has suggested Contrast enhanced CT. The physician advised not to do for this condition, what may be the condition most likely ?  
 (A) Pancreatic calcification  
 (B) Pancreatic pseudocyst  
 (C) Pancreatic necrosis  
 (D) Endocrine tumour
148. A 40 years old male presented with a 10 years history of acid reflux to his doctor in OPD with concern due to the increasing severity and frequency of his acid reflux symptoms. At times, he states that he has difficulty in swallowing. Oesophagocopy showed narrow strips of salmon-colored mucosa extending from the gastroesophageal junction upward into the tan white squamous epithelium. The biopsy reveals esophageal intestinal metaplasia characterized by intestinalized mucosa consisting of columnar and goblet cells. What is this complication known as ?  
 (A) Barrett's Oesophagus  
 (B) Adenocarcinoma of Oesophagus  
 (C) Oesophagitis  
 (D) Nutcracker Oesophagus
149. A patient with vomiting and epigastric discomfort with loss of weight went to the OPD. Upper GI endoscopy shows atrophy of gastric glands and folds and there is a loss of Parietal and Chief cells. Which cannot be the cause of this condition ?  
 (A) Bile reflux  
 (B) NSAIDS  
 (C) H. Pylori infection  
 (D) Pernicious anemia
150. Patient admitted after Road Traffic injury to the trauma ward. Multiple rib fractures are seen during physical examination. FAST shows free peritoneal fluid. Vitals are stable. What is the next step ?  
 (A) Emergency laparotomy  
 (B) Contrast CT abdomen  
 (C) Repeat FAST after 30 minutes  
 (D) Fluid resuscitation
151. Which of the following is a wrong statement about acute osteomyelitis ?  
 (A) Most common organism is staphylococcus  
 (B) Most common site is metaphysis of bone  
 (C) Needs surgery within 48 hours of onset  
 (D) Rest and elevation relieves pain
152. Bony ankylosis in peripheral joints is a sequelae of  
 (A) Tubercular arthritis  
 (B) Pyogenic arthritis  
 (C) Psoriatic arthritis  
 (D) Rheumatoid arthritis
153. Pott's paraplegia occurs most commonly in lesions of  
 (A) Cervical spine  
 (B) Upper thoracic spine  
 (C) Lower thoracic spine  
 (D) Lumbar spine



AS – 23/24

154. Compound palmar ganglion is  
 (A) Post-traumatic ulnar bursitis  
 (B) Out pouching of synovial sac of wrist joint  
 (C) Ulnar bursitis secondary to tuberculosis  
 (D) Pyogenic ulnar bursitis
155. Rheumatoid arthritis starts in  
 (A) subchondral bone  
 (B) synovial membrane  
 (C) articular cartilage  
 (D) capsule of joint
156. The most important feature of median nerve injury at elbow is  
 (A) Decreased sensation in radial 3 1/2 fingers  
 (B) Wasting of thenar muscles  
 (C) Paralysis of flexors of index finger  
 (D) Paralysis of flexors of wrist
157. Reorganize the following steps in chronological order as happens during fracture healing.  
 1. Cartilaginous callus formation  
 2. Granular tissue formation  
 3. Remodelling  
 4. Lamellar bone deposition  
 5. Formation of blood clot and inflammation  
 The correct chronological order of fracture healing is  
 (A) 5, 2, 1, 4, 3  
 (B) 5, 4, 3, 2, 1  
 (C) 5, 2, 3, 4, 1  
 (D) 5, 2, 4, 3, 1
158. Trident hand is a feature of  
 (A) Achondroplasia  
 (B) Madlung deformity  
 (C) Hyperparathyroidism  
 (D) Fibrous dysplasia
159. A 10 years boy presented with history of severe pain in his left hip since last 1 month. The pain classically gets relieved with NSAIDs. The radiographs of thigh revealed a radiolucent nidus surrounded by sclerosis in proximal femur. Which of the following will be the next best step for this case ?  
 (A) MRI for left hip  
 (B) CT scan for left hip  
 (C) Biopsy from pathological site  
 (D) Radiofrequency ablation
160. True about 'Hand to knee gait' is  
 (A) Result of quadriceps weakness and fixed knee flexion deformity  
 (B) A feature of cerebral palsy  
 (C) Hamstring lengthening is the treatment of choice  
 (D) Is accompanied with loss of sensation over thigh and knee
161. Which of the following is not a common microorganism implicated in acute suppurative otitis media ?  
 (A) S. pneumoniae  
 (B) H. influenzae  
 (C) M. catarrhalis  
 (D) E. coli





AS – 23/24

162. False about Juvenile Nasopharyngeal Angiofibroma is
- (A) More commonly affects paediatric and adolescent age group
  - (B) Males and females are equally affected
  - (C) It is locally invasive but benign tumour
  - (D) It is a highly vascular tumour of the nasal cavity
163. Which of the following drugs is not known to cause ototoxicity ?
- (A) Streptomycin
  - (B) Pantoprazole
  - (C) Furosemide
  - (D) Cisplatin
164. Tuning fork test is one of the clinical tests of hearing. Tuning fork of which frequency is ideal for routine use in out patient clinics ?
- (A) 128 Hz
  - (B) 256 Hz
  - (C) 512 Hz
  - (D) 1024 Hz
165. In a standard cochlear implant procedure, electrode is inserted into
- (A) Scala Media
  - (B) Scala Vestibuli
  - (C) Scala Tympani
  - (D) Utricle
166. Which of the following **does not** support the diagnosis of open angle glaucoma ?
- (A) Vertically enlarged optic disc cup
  - (B) Linear haemorrhage along the lower temporal disc margin
  - (C) Cup : disc ratio of less than 0.5
  - (D) Intraocular pressure of 16 mm of Hg
167. For doing a confrontation visual field examination, which of the following is the right technique ?
- (A) The examiner sits as close to the patient as possible
  - (B) The examiner covers the eye of the patient
  - (C) The examiners asks the patient to note wiggling of the examiner's finger
  - (D) The examiner asks the patient to count his fingers
168. For colour vision testing which of the following is TRUE ?
- (A) Colour vision testing is done with the use of pseudoisochromatic plates
  - (B) In person with presbyopia the test is done without wearing near vision glasses
  - (C) The test should be done with both eyes open
  - (D) The test is preferably done in artificial light



AS – 23/24

169. A 45 years old woman presents with headache, pain and red eye. Which of the following signs does not support the diagnosis of acute angle closure glaucoma ?
- (A) Dilated pupil
  - (B) Small pupil
  - (C) Steamy cornea
  - (D) Conjunctival hyperaemia
170. A 65 years old man complains of sudden appearance of dark floaters following lightening streak-like flashes of light. All are true EXCEPT
- (A) He needs to be examined by a retinal surgeon
  - (B) He may be suffering from migraine
  - (C) He may have developed posterior vitreous detachment
  - (D) He may have developed a retinal tear
171. A 25 years old female reports in the casualty with history of amenorrhea for 2.5 months and abdominal pain, bleeding per vaginum since one day. On examination, vital parameters are normal. On speculum examination bleeding+, uterus appears 6 wks in size and internal os open. Most likely diagnosis is
- (A) Threatened abortion
  - (B) Missed abortion
  - (C) Inevitable abortion
  - (D) Incomplete abortion
172. Triple test includes
- (A) Maternal AFP + HCG + Estradiol
  - (B) Maternal AFP + HCG + PAPP A
  - (C) Maternal AFP + PAPP A + Estradiol
  - (D) TSH + HCG + Estradiol
173. Spigelberg criteria is used in
- (A) Ovarian pregnancy
  - (B) Cervical pregnancy
  - (C) Abdominal pregnancy
  - (D) Tubal pregnancy
174. A 30 years old female G3P2L2 at 38 weeks of gestation presents with labour pain. On examination, cervix is 3 cm dilated and fetus was found to be in face presentation with left mento posterior position. What is the management ?
- (A) Forceps
  - (B) Expectant management
  - (C) LSCS
  - (D) Vacuum delivery
175. A lady presented to Gynae. opd with abdominal pain and bloating. Upon investigation she was found to be a case of gastric adenocarcinoma. On surgery, she was found to have bilateral ovarian masses with smooth surface. On microscopy they revealed mucin secreting cells in signet ring shape. The diagnosis is
- (A) Dysgerminoma
  - (B) Teratoma
  - (C) Krukenberg tumor
  - (D) Mucinous adenocarcinoma





AS – 23/24

176. Absolute contraindication of OCPs
- (A) Migraine without aura
  - (B) Smoking less than 35 years of age
  - (C) Breast cancer
  - (D) Sickle cell disease
177. A 32 weeks pregnant female presents with mild uterine contractions. On examination her vitals are stable and usg s/o grade 3 placenta previa. Best management is
- (A) Bed rest + Steroids
  - (B) Bed rest + Steroids + Tocolytics
  - (C) Immediate C-Section
  - (D) Only bed rest
178. Feto maternal hemorrhage is detected by
- (A) Keilhauer Betke test
  - (B) Apt test
  - (C) Benzidine test
  - (D) Spectrophotometry
179. A couple having unprotected intercourse for one year and not able to conceive presents to infertility clinic. Woman has normal menstrual cycle. Semen analysis shows abnormal sperm morphology, low count and normal volume. Best next step would be
- (A) Get a scrotal usg done
  - (B) Repeat the test after one month
  - (C) Serum testosterone level
  - (D) HSG in woman
180. A pregnant woman with fibroid uterus develops acute pain in abdomen with low grade fever and leukocytosis at 29 weeks. How do you manage ?
- (A) Myomectomy
  - (B) Immediate C-Section
  - (C) Conservative management
  - (D) Uterine artery embolization
181. Most common site of endometriosis
- (A) Broad ligament
  - (B) Ovary
  - (C) Pouch of Douglas
  - (D) Fallopian tube
182. Most common cause of puberty menorrhagia is
- (A) Anovulation
  - (B) Thyroid disorders
  - (C) Coagulation disorders
  - (D) Malignancy
183. Causes of oligohydramnios include
- (A) Diabetes miletus
  - (B) Anencephaly
  - (C) Renal agenesis
  - (D) Twins
184. Banana and lemon sign is seen in
- (A) Neural tube defects
  - (B) Hydrops fetalis
  - (C) Omphalocele
  - (D) Down's syndrome



AS – 23/24

185. Which is not included in active management of third stage of labour ?  
 (A) i.m oxytocin 10 units  
 (B) Uterine massage  
 (C) Controlled cord traction  
 (D) Early cord clamping
186. Snow storm appearance on usg is seen in  
 (A) Ectopic pregnancy  
 (B) Molar pregnancy  
 (C) Anencephaly  
 (D) Twin gestation
187. Quintero staging system used in  
 (A) TRAP  
 (B) TTTS  
 (C) Vanishing twin  
 (D) Conjoined twins
188. A diabetic female at 40 weeks of gestation delivered a baby by elective C-Section. Soon after birth the baby developed respiratory distress. The diagnosis is  
 (A) Transient tachypnea of the new born  
 (B) Congenital diaphragmatic hernia  
 (C) Tracheoesophageal fistula  
 (D) Hyaline membrane disease
189. Strawberry vagina is seen in  
 (A) Gonorrhea  
 (B) Trichomonas vaginalis  
 (C) Chlamydia  
 (D) Pseudomonas
190. Most common agent responsible for ca cervix is  
 (A) HPV 16 & 32  
 (B) HPV 16 & 18  
 (C) HPV 16 & 31  
 (D) HPV 6 & 8
191. A young boy undergoes eye surgery under day care anesthesia with succinyl choline and propofol and after 8 hours he starts walking and develops muscle pain. What is the likely cause ?  
 (A) Succinyl choline  
 (B) Due to the effects of eye surgery  
 (C) Early mobilisation  
 (D) Propofol
192. The following drug does not have analgesic effects  
 (A) Ketamine  
 (B) Dexmedetomidine  
 (C) Thiopentone  
 (D) Remifentanyl
193. The application of backward pressure on the cricoid cartilage to occlude the oesophagus prevents aspiration of gastric contents during induction of anaesthesia and in resuscitation of emergency victims when intubation is delayed or not possible. This is called  
 (A) Sallinger's manœuvre  
 (B) Sellar's manœuvre  
 (C) Sellick's manœuvre  
 (D) Seligman's manœuvre





AS – 23/24

194. An elective Lower Segment Caesarean Section (LSCS) is posted at 9 AM. The woman was asked to be NBM (nil by mouth) overnight. She had one glass of water at 5 AM in the morning. What should the anaesthesiologist do ?
- Defer surgery by 2 hours
  - Defer surgery by 4 hours
  - Can do surgery at scheduled time without high risk of aspiration
  - Can do surgery at scheduled time with high risk of aspiration
195. A patient was anesthetized with halothane and nitrous oxide and succinylcholine was used for skeletal muscle relaxation. She became hypertensive along with marked muscle rigidity and hyperthermia. Lab reports showed that she has developed hyperkalemia and acidosis. This complication was caused by
- Excessive release of calcium from the sarcoplasmic reticulum
  - Pheochromocytoma
  - Activation of brain dopamine receptors by halothane
  - Block of autonomic ganglia by succinylcholine choline
196. All of the following are disorders of perception except
- Hallucination
  - Delusion
  - Illusion
  - Depersonalization
197. A 24 years old boy presents in emergency room with complains of diarrhoea, sweating, bodyaches, rhinorrhoea, lacrimation and piloerection with history of substance addiction. Most probable diagnosis is
- Heroin withdrawal
  - Alcohol withdrawal
  - Cocaine withdrawal
  - Cannabis withdrawal
198. 'La belle indifference' is seen in which disorder ?
- Depression
  - Dissociative disorder
  - Obsessive – compulsive disorder
  - Phobia
199. A patient wanting to scratch for itching in his amputated limb is an example of
- Illusion
  - Pseudohallucination
  - Phantom limb hallucination
  - Autoscopic hallucination
200. Stereotypic movements are
- Sustained posture against gravity
  - Passive inducible movements
  - Repetitive, spontaneous nonfunctional movements
  - Resistance to passive movements



AS – 23/24

SPACE FOR ROUGH WORK





SEAL

