

27th May 2023 (Shift - 3)

- Q1.** Who appoints the chairman of the Union Public Service Commission?
 (a) Prime Minister
 (b) President
 (c) Speaker of the Lok Sabha
 (d) Home Minister

- Q2.** In which year "Panchayati Raj" was passed in Lok Sabha and Rajya Sabha?
 (a) 1985
 (b) 1989
 (c) 1992
 (d) 1995

- Q3.** World population day is celebrated on:
 (a) 11 July
 (b) 11 June
 (c) 10 July
 (d) 05 June

- Q4.** Who is the author of the book "Speed Post"?
 (a) Anita Nayyar
 (b) Anita Desai
 (c) Ritu Beri
 (d) Shoba De

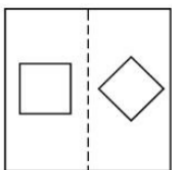
- Q5.** The letters L, M, N, O, P, Q, R, S, T in their order is substituted by nine integers 1 to 9 in that order. 4 is assigned to P. The difference between P and T is 5. The difference between N and T is 3. What is the integer assigned to N?
 (a) 7
 (b) 6
 (c) 5
 (d) 4

- Q6.** Who amongst the following was awarded the Nobel Prize in Medicine in 1968 for the interpretation of genetic code and its function in protein synthesis?
 (a) Dr. C. V. Raman
 (b) Har Gobind Khorana
 (c) S Chandrasekhar
 (d) V. S. Naipaul

- Q7.** In the given question find the water image of the word "FAMILY".

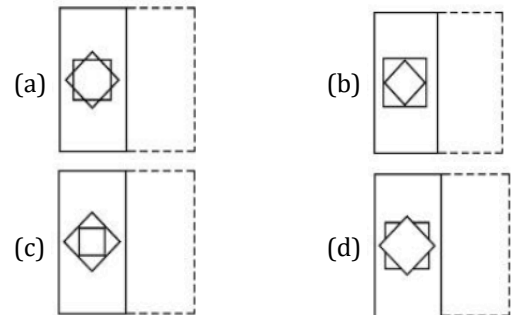
- (a) E V W I F A
 (b) E V M I T A
 (c) E V W I T A
 (d) F V W I J A

- Q8.** Which of the following belongs to 'Harappan Culture'?
 (a) Bronze Age
 (b) Copper Age
 (c) Iron Age
 (d) Strong Age



Q9.

Choose the correct option (figure) after folding the figure along the dotted line.



- Q10.** If 3 men or 9 boys can finish a work in 21 days, then in how many days can 5 men and 6 boys finish the same work?

- (a) 7
 (b) 9
 (c) 11
 (d) 13

- Q11.** The area of the largest circle, that can be drawn inside a rectangle with sides 63 cm and 42 cm is ($\pi = \frac{22}{7}$)

- (a) 1386 cm²
 (b) 1586 cm²
 (c) 1786 cm²
 (d) 1986 cm²

- Q12.** You are alone in the house and there is danger of thieves around. Just then, you hear a knock at door. You would

- (a) open the door to see who is there.
 (b) first peep out from the window to confirm whether you know the person
 (c) not open the door.
 (d) ask the servant to see who is there

- Q13.** If $A : B = \frac{1}{2} : \frac{5}{8}$, $B : C = \frac{1}{3} : \frac{4}{5}$ and $C : D = \frac{3}{4} : \frac{5}{16}$ then the ratio A : B : C : D is:

- (a) 4 : 5 : 3 : 12
 (b) 4 : 12 : 3 : 5
 (c) 4 : 5 : 12 : 5
 (d) 4 : 12 : 5 : 3

- Q14.** XY \Rightarrow Delete the last letter,
 YZ \Rightarrow Replace the fourth letter with next in the alphabet,
 ZX \Rightarrow Reverse the whole sequence of the letters.
 Then LOGICAL \Rightarrow XY \rightarrow YZ \rightarrow ZX \rightarrow ?

- (a) ACLOJG
 (b) ACOJGL
 (c) ACJGOL
 (d) ACGJOL

- Q15.** Mohit is 15th from the right end in a row of 49 boys. What is his position from left end?

- (a) 35
 (b) 26
 (c) 27
 (d) 20

- Q16.** If A (2a + 3b, a + 6b) and B (3a + 4b, 2a + 5b) are two points, then distance between the points A and B is:

- (a) 2(a + b)
 (b) $\sqrt{2}(a^2 - b^2)$
 (c) 2ab
 (d) $\sqrt{2}(a^2 + b^2)$

General Test - Previous Year Papers

- Q17.** The average of four numbers is 40. If the first number is one-third of the sum of the remaining numbers, then the first number is
 (a) 35 (b) 50
 (c) 30 (d) 40
- Q18.** Pointing to a woman, Venus said, "She is the daughter of the only child of my grandmother." How is the woman related to Venus?
 (a) Wife (b) Niece
 (c) Sister (d) Cousin
- Q19.** Which of these numbers 6400, 125, 261 and 4913 is not a perfect cube?
 (a) 6400 (b) 125
 (c) 9261 (d) 4913
- Q20.** A stone statue of priest king has been found from:
 (a) Harappa
 (b) Mohenjo Daro
 (c) Kalibangan
 (d) Dholavira
- Q21.**

□ ○ △	○ △ □	×	?
	× ×	△ □ ○	○ △ □
			×

 Which one of the four answers figure would come at the place of the question mark?
 (a)

□ ○ ▽
×

 (b)

×
△ ○ □

 (c)

×
□ ○ △

 (d)

×
□ ○ △
- Q22.** Starting from point A Tianna moves 20m till point C in north east direction before turning to her right. She walks 20m again turning to her right stopping at point B. How far is point A from point B.
 (a) $20\sqrt{2}m$ (b) $10\sqrt{2}m$
 (c) 20m (d) 10m
- Q23.** In a $\triangle ABC$ right angled at B. if $BC = 4\text{ cm}$ and $\angle C = 60^\circ$, then length of AC is:
 (a) $8\sqrt{3}cm$ (b) $\frac{8}{\sqrt{3}}$
 (c) 6 cm (d) 8 cm
- Q24.** _____ is the heaviest gas.
 (a) Radon gas (b) Carbon Monoxide
 (c) Sulphur Dioxide (d) Nitrogen Oxide
- Q25.** If in a certain code, ALMIRAH is written as BNPMWGO, which would be written as DNRWLUA?
 (a) COSGOLT (b) TOGSOLC
 (c) TOGCLOS (d) CLOGSOT
- Q26.** One litre of water is added to 5 litres of alcohol-water solution having 40% alcohol strength. The strength of alcohol in the new solution will be
 (a) 33% (b) $33\frac{1}{3}\%$
 (c) $33\frac{2}{3}\%$ (d) 30%

- Q27.** The mean of 9 observations is 43. Later, it was found that 59 was misread as 69. What would be the correct mean? (correct to two decimal places)
 (a) 44.11 (b) 41.89
 (c) 42.11 (d) 43.89
- Q28.** Which gas is used for the manufacturing of Bleaching Powder?
 (a) Fluorine gas (b) Chlorine gas
 (c) Bromine gas (d) Iodine gas
- Q29.** Which of the following mountain Railways are part of UNESCO'S world Heritage site?
 A. Darjeeling Himalayan Railways
 B. Nilgiri mountain Railways
 C. Kalka - Shimla Railways
 D. Mumbai to Thane Railways
 Choose the correct answer from the options given below:
 (a) A only (b) A, B only
 (c) A, B, C only (d) A, B, C, D
- Q30.** 44% of 80% of a number is 6864. What will be 15% of that number?
 (a) 2288 (b) 2882
 (c) 2925 (d) 2952
- Q31.** In the given question, arrange the given words in the sequence occur in the dictionary.
 (A) Wound
 (B) Writer
 (C) Whiter
 (D) Worst
 (E) Worked
 (a) A, D, C, E, B (b) B, A, C, D, E
 (c) C, E, D, A, B (d) E, C, B, A, D
- Q32.** A ladder leans against a vertical wall. End of the ladder is 8 m above the ground. When the lower end of the ladder is moved 2 m farther away from the wall, the other end of the ladder rests against the foot of the wall. The length of the ladder is:
 (a) 10 m (b) 15 m
 (c) 30 m (d) 17 m
- Q33.** Two dice are thrown simultaneously. What is the probability that the sum of the two numbers is 4?
 (a) $\frac{1}{11}$ (b) $\frac{1}{12}$
 (c) $\frac{1}{13}$ (d) $\frac{1}{14}$
- Q34.** The temple not built by Krishna Deva Raya (70 AD-1529) is:
 (a) Vijaya Mahal
 (b) Hazara Rama Temple
 (c) Sun Temple
 (d) Vithal Swami Temple
- Q35.** How many degrees does the minute hand cover in the same time in which the seconds hand cover 180° .
 (a) 18 (b) 6
 (c) 3 (d) 180
- Q36.** In a 2-digit number unit's digit is 5 more than the ten's digit. If 5 times the given number is 24 more

General Test - Previous Year Papers

than two times the number obtained by interchanging the digits of the given number, then the given number is:

- (a) 16 (b) 27
(c) 38 (d) 49

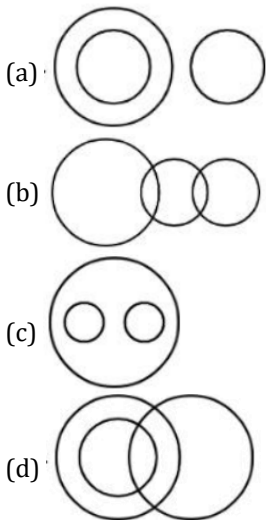
Q37. Where is the 'Indian grape processing Board' located?

- (a) Bengaluru (Karnataka)
(b) Kottayam (Kerela)
(c) Pune (Maharashtra)
(d) Kochi (Kerela)

Q38. The chairman of Drafting Committee of the constitution was:

- (a) Dr. Rajendra Prasad
(b) Dr. B.R. Ambedkar
(c) Dr. Zakir Hussain
(d) Pt. Jawahar Lal Nehru

Q39. Which of the following shows the relation between Sun, Earth and Universe?



Q40. Find the area of four walls of a room having length 12.5 m, breadth 9 m and height 7 m

- (a) 289 m² (b) 300 m²
(c) 307 m² (d) 301 m²

Q41. If principal amount is P and rate of interest is R% per annum, then what is the difference between simple interest and compound interest for 2 years?

- (a) $\frac{PR}{100}$ (b) $\frac{2PR}{100}$
(c) $\frac{PR^2}{(100)^3}$ (d) $\frac{PR^2}{100}$

Q42. If the radius of a sphere is increased by 50%. then its surface area will increase by:

- (a) 25% (b) 125%
(c) 150% (d) 50%

Q43. _____ satellite was launched on 29th March 2018 from Srihari Kota with the help of PSLV-C40 launch vehicle.

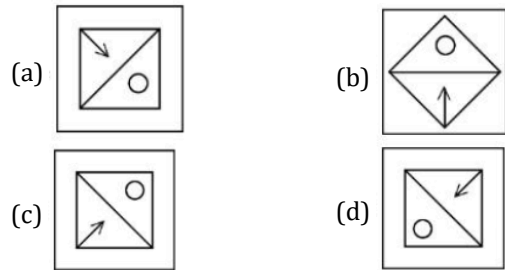
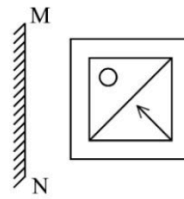
- (a) DMC3 (b) SARAL
(c) Cartosat-2 (d) Rohini RS-1

Q44. In the year 1996, the republic day was celebrated on Friday. On which day the Independence Day was celebrated in the year 2000?

- (a) Monday (b) Tuesday

- (c) Sunday (d) Friday

Q45. Choose the correct mirror image of the given figure, where mirror is represented by a line MN.



Q46. Find the mean proportional between 18 and 72.

- (a) 36 (b) 45
(c) 90 (d) 72

Q47. How many '7's are preceded by 9 and followed by 6 in the given series?

7, 8, 9, 7, 6, 5, 3, 4, 2, 8, 9, 7, 2, 4, 5, 9, 2, 9, 7, 6, 4, 7

- (a) 5 (b) 4
(c) 3 (d) 2

Q48. Statements:

- Dogs do not bark on the arrival of friends of the family
- When A entered B's house, B's dog started barking.

Conclusion: A is B's enemy.

The conclusion drawn is:

- (a) Follows from the given statements.
(b) Is probably true.
(c) Does not follow from the given statements.
(d) Is probably false.

Q49. Five girls sitting in a row. Raashi is not adjacent to Grace or Adhya. Anu is not adjacent to Grace. Raashi is adjacent to Venus. Venus is at the middle in the row. Then Anu is adjacent to whom?

- (a) Raashi (b) Grace
(c) Aadhya (d) Venus

Q50. Which of the following is not in the UNESCO's world Heritage site of India?

- (a) Sun Temple, Konark (b) Elephanta Caves
(c) Western Ghats (d) Golkonda Fort

Q51. If in a certain code, the word MILITARY is written as 01213456, then in the same code the word MAIL will be written as

- (a) 0312 (b) 0412
(c) 4012 (d) 0124

Q52. In the given question the figure (X) is followed by four alternative figures such that figure (X) is embedded in one of them. Trace out the alternative figures which contains figure (X) as its part.

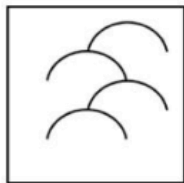
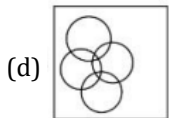
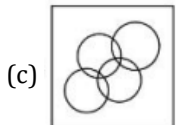
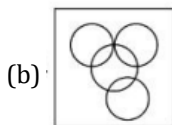
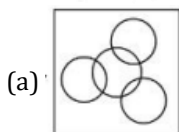


Figure (X)



Q53. 'Sardar Sarovar Dam' is built on which river?

- (a) Sutlej (b) Kaveri
(c) Narmada (d) Yamuna

Q54. If $2x$, $x + 4$ and $x + 1$ are in A.P., then the value of x is:

- (a) 6 (b) $6\frac{1}{2}$
(c) 7 (d) 8

Q55. Which of the following are true regarding Supreme Court of India?

- A. Its decision are binding on all Courts
B. Can transfer judges of High Courts
C. Can move cases from any court to itself

D. Can deal with cases within the jurisdiction of the state

Choose the most appropriate answer from the options given below:

- (a) A, B only (b) C, D only
(c) A, B, C only (d) A, B, C, D

Q56. The commander of the Armed Force in India is:

- (a) Prime Minister
(b) President
(c) Defence Minister
(d) Chief Justice of the supreme court

Q57. Difference in the place values of 3 used at two places in the number 934530 is:

- (a) 29970 (b) 30070
(c) 29570 (d) 29990

Q58. The speed of a train is 88 km/h. How much time will it take to cross a 180 m long platform if length of the train is 150 m?

- (a) $11\frac{1}{2}s$ (b) $10\frac{1}{2}s$
(c) $13\frac{1}{2}s$ (d) $14\frac{1}{2}s$

Q59. The Indian giant who got maximum Grammy Award is:

- (a) Pt. Ravi Shankar (b) Zakir Hussain
(c) Zubin Mehta (d) A. R. Rehman

Q60. Who is the author of book "Unhappy India"?

- (a) M. K. Gandhi (b) Lala-Lajpat Rai
(c) Vijay Tendulkar (d) Swami Shivanand