

Q1. Statements:

Some books are magazines.

Some magazines are novels.

Conclusions:

(I) Some books are novels.

(II) Some novels are magazines

(a) Only (I) follows

(b) Only (II) follows

(c) Both (I) and (II) follow

(d) Neither (I) nor (II) follows

Q2. In a certain code language 'nik ka pa' means 'who are you', 'ka na ta da' means 'you may come here' and 'na ta sa' means 'come and go', what does 'nik' mean in that code language?

(a) who

(b) are

(c) who or are

(d) Data inadequate

Q3. Of the five villages P, Q, R, S and T situated close to each other, P is to the West of Q, R is to the South of P, T is to the North of Q and S is to the East of T. Then, R is in which direction with respect to S?

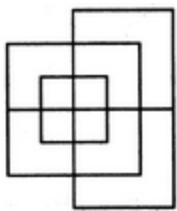
(a) North-West

(b) South-East

(c) South-West

(d) Data inadequate

Q4. Find the minimum number of straight lines required to make the given figure.



(a) 13

(b) 15

(c) 17

(d) 19

Q5. 6, 18, 3, 21, 7, 56, ?

- (a) 8
- (b) 9
- (c) 63
- (d) 64

Q6. Pointing to a man, Mohit said, "He is the son of my wife's maternal's grandfather's only child". How is the man related to Mohit ?

(a) Brother

(b) Brother-in-law

(c) Father

(d) Son

Q7. Choose the correct water-image of the Fig. (X) from amongst the four alternatives (a), (b), (c) and (d) given along with it



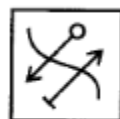
(X)



(a)



(b)

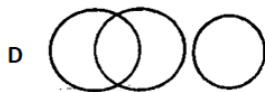
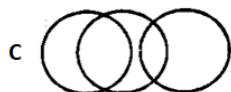


(c)



(d)

Q8. Which of the following diagrams correctly illustrates the relationship among managers, employees and human beings?



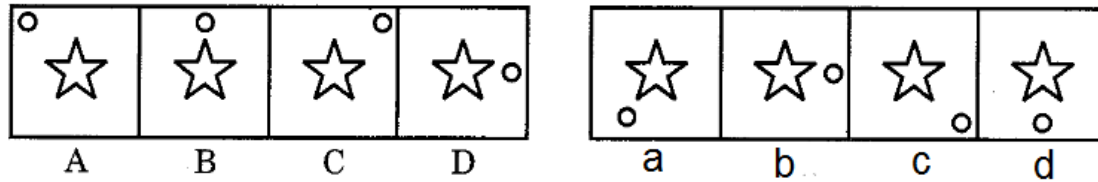
(a) A

(b) B

(c) C

(d) D

Q9. Given consists of four Problem Figures marked A, B, C and D. Answer Figures marked a, b, c and d. Select a figure from amongst the Answer Figures which will continue the series established by the four Problem Figures.

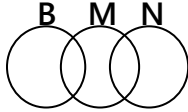


Q10. On 8th Feb, 2005 it was Tuesday. What was the day of the week on 8th Feb, 2004?

- (a) Tuesday
- (b) Monday
- (c) Sunday
- (d) Wednesday

S1. Ans.(b)

Sol.



Only conclusion (II) follows.

Some Novels are magazines.

S2. Ans.(c)

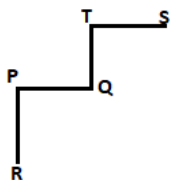
Sol. Code language Meaning

nik	ka	pa	⇒	who are	you	...(i)
ka	na	ta	da	⇒	you	may came here
na	ta	sa	⇒	come and go		...(iii)

As per the data arrange above, either 'who' or 'are' is the meaning of 'nik'.

S3. Ans.(c)

Sol.



Hence, R is to the South-West with respect to S.

S4. Ans. (a)

S5. Ans. (a)

Sol.

Each term at an even place in the series is the product of its two adjacent terms.

Thus, if the, missing term be x , then we have:

$$7 \times x = 56 \text{ or } x = 56 \div 7 = 8.$$

S6. Ans. (b)

Sol. Mohit's wife's maternal's grandfather's only child- Mohit's mother-in-law.

Son of Mohit's Mother-in-law - Mohit's Brother-in-law.

S7. Ans. (c)

S8. Ans. (a)

Sol.

All managers are employees and all employees are human beings. So option (a) is correct answer.

S9. Ans. (c)

Sol.

The circle moves half-a-side of the square boundary in a CW direction in each step.

S10. Ans. (c)

Sol.

The year 2004 is a leap year. It has 2 odd days.

∴ The day on 8th Feb, 2004 is 2 days before the day on 8th Feb, 2005.

Hence, this day is Sunday.