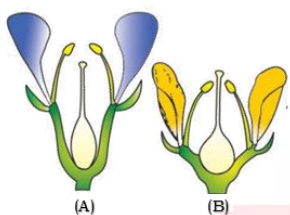


1. Which of the following is an example of actinomorphic flower? **(2024)**

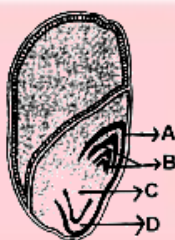
(a) *Cassia* (b) *Pisum*
(c) *Sesbania* (d) *Datura*

2. Identify the type of flowers based on the position of calyx, corolla and androecium with respect to the ovary from the given figures (A) and (B) **(2024)**



(a) (A) Hypogynous; (B) Epigynous
(b) (A) Perigynous; (B) Epigynous
(c) (A) Perigynous; (B) Perigynous
(d) (A) Epigynous; (B) Hypogynous

3. Identify the parts of the seed from the given figure which is destined to form root when the seed germinates. **(2024)**



(a) B (b) C
(c) D (d) A

4. Match List – I with List –II

List –I	List –II
A. Rose	I. Twisted aestivation
B. Pea	II. Perigynous flower
C. Cotton	III. Drupe
D. Mango	IV. Marginal placentation

Choose the correct answer from the options given below: **(2024)**

(a) A-I, B-II, C-III, D-IV
(b) A-IV, B-III, C-II, D-I
(c) A-II, B-III, C-IV, D-I
(d) A-II, B-IV, C-I, D-III

5. Match List – I with List – II

List –I	List –II
A. Monadelphous	I. Citrus
B. Diadelphous	II. Pea
C. Polyadelphous	III. Lily
D. Epiphyllous	IV. China-rose

Choose the correct answer from the options given below: **(2024)**

(a) A-IV, B-I, C-II, D-III
(b) A-I, B-II, C-IV, D-III
(c) A-III, B-I, C-IV, D-II
(d) A-IV, B-II, C-I, D-III

6. Family fabaceae differs from Solanaceae and Lilliaceae. With respect to the stamens, Pick out the characteristics specific to family Fabaceae but not found in Solanaceae or Liliaceae. **(2023)**

(a) Epiphyllous and Ditheous anthers
(b) Diadelphous and Ditheous anthers
(c) Polyadelphous and epipetalous stamens
(d) Monadelphous and Monotheococcus anthers

7. Axile placentation is observed in **(2023)**

(a) China rose, Petunia and Lemon
(b) Mustard, cucumber and Primrose
(c) China rose, Beans and Lupin
(d) Tomato, Dianthus and pea

8. Assertion A :- A flower is defined as modified shoot wherein the shoot apical meristem changes to floral meristem.

Reason R :- Internode of the shoot gets condensed to produce different floral appendages laterally at successive node instead of leaves. **(2023)**

- (a) A is false but R is true
- (b) Both A and R are true and R is the correct explanation of A
- (c) Both A and R true but R is NOT the correct explanation of A
- (d) A is true but R is false.

9. In Calotropis, aestivation is: **(2023)**

- (a) Valvate
- (b) Vexillary
- (c) imbricate
- (d) Twisted

10. In a pea flower, five petals are arranged in a specialized manner with one posterior, two lateral and two anterior. These are named as ____, ____ and ____ respectively. **(2023)**

- (a) Keel Wings and Standard
- (b) Vexillum, Keel and Standard
- (c) Keel Standard and Canna
- (d) Standard, Wings and Keel

11. Which of the following statement is not correct? **(2022)**

- (a) The rhizome is thick, prostrate and branched
- (b) Rhizome is a condensed form of stem
- (c) The apical bud in rhizome always remains above the ground
- (d) The rhizome is aerial with no distinct nodes and internodes

12. The type of tissue commonly found in the fruit wall of nuts is: **(2022)**

- (a) Sclereid
- (b) Parenchyma
- (c) Collenchyma
- (d) Sclerenchyma

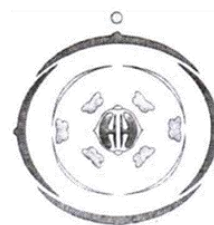
13. Match List - I with List - II: **(2022)**

List - I		List - II	
A	Imbricate	(i)	Calotropis
B	Valvate	(ii)	Cassia
C	Vexillary	(iii)	Cotton
D	Twisted	(iv)	Bean

Choose the correct answer from the options given below

- (a) (A)-(i), (B)(iii), (C)-(iv), (D)-(ii)
- (b) (A)-(ii), (B)-(i), (C) (iii), (D)-(iv)
- (c) (A)-(ii), (B)-(i), (C)-(iv), (D) -(iii)
- (d) (A)-(ii), (B)-(iv), (C)-(iii), (D)-(i)

14. The Floral Diagram represents which one of the following families? **(2022)**



- (a) Liliaceae
- (b) Fabaceae
- (c) Brassicaceae
- (d) Solanaceae

15. Identify the correct set of statements:

- (A) The leaflets are modified into pointed hard thorns in Citrus and Bougainvillea
- (B) Axillary buds form slender and spirally coiled tendrils in cucumber and pumpkin
- (C) Stem is flattened and fleshy in Opuntia and modified to perform the function of leaves
- (D) Rhizophora shows vertically upward growing roots that help to get oxygen for respiration
- (E) Subaerially growing stems in grasses and strawberry help in vegetative propagation

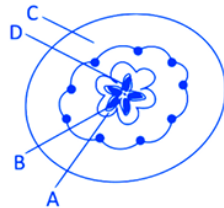
Choose the correct answer from the options given below: **(2022)**

- (a) (B) and (C) only
- (b) (A) and (D) only
- (c) (B), (C), (D) and (E) only
- (d) (A), (B), (D) and (E) only

16. Which one of the following plants shows vexillary aestivation and diadelphous stamens? **(2022)**

- (a) Colchicum autumnale
- (b) Pisum sativum
- (c) Allium cepa
- (d) Solanum nigrum

17. The flowers are Zygomorphic in: **(2022)**
 (1) Mustard (2) Gulmohar
 (3) Cassia (4) Datura
 (5) Chilly
 (a) (1), (2) and (3) only
 (b) (2), (3) only
 (c) (4), (5) only
 (d) (3), (4), (5) only
18. Which part of the fruit, labelled in the given figure makes it a false fruit? **(2022)**



- (a) A → Mesocarp (b) B → Endocarp
 (c) C → Thalamus (d) D → Seed

19. Match Column-I with Column-II **(2021)**

Column I		Column II	
A.	$\% \text{♀} K_{(5)} C_{1+2(2)} A_{(9)+1} \underline{G}_1$	(i)	Brassicaceae
B.	$\oplus \text{♀} K_{(5)} \overbrace{C_{(5)} A_5} G_{(2)}$	(ii)	Liliaceae
C.	$\oplus \text{♀} \overbrace{P_{(3+3)} A_{3+3}} G_{(3)}$	(iii)	Fabaceae
D.	$\oplus \text{♀} K_{2+2} C_4 A_{2-4} \underline{G}_{(2)}$	(iv)	Solanaceae

Select the correct answer from the options given below.

- (a) A-(i) B-(ii) C-(iii) D-(iv)
 (b) A-(ii) B-(iii) C-(iv) D-(i)
 (c) A-(iv) B-(ii) C-(i) D-(iii)
 (d) A-(iii) B-(iv) C-(ii) D-(i)
20. Ray florets have: **(2020)**
 (a) Superior ovary
 (b) Hypogynous ovary
 (c) Half inferior ovary
 (d) Inferior ovary

21. The roots that originate from the base of the stem are: **(2020)**
 (a) Primary roots (b) Prop roots
 (c) Lateral roots (d) Fibrous roots
22. The ovary is half inferior in: **(2020)**
 (a) Mustard (b) Sunflower
 (c) Plum (d) Brinjal
23. Correct position of floral parts over thalamus in mustard plant is- **(2020 Covid Re-NEET)**

- (a) Margin of the thalamus grows upward, enclosing the ovary completely, and other parts arise below the ovary
 (b) Gynoecium is present in the centre and other parts cover it partially
 (c) Gynoecium is situated in the centre, and other parts of the flower are located at the rim of the thalamus, at the same level
 (d) Gynoecium occupies the highest position, while the other parts are situated below it

24. Which of the following is the correct floral formula of Liliaceae? **(2020 Covid Re-NEET)**

- (a) $\oplus \text{♂} \text{♀} K_{(5)} \overbrace{C_{(5)} A_5} \underline{G}_{(2)}$
 (b) $Br \oplus \text{♀} \overbrace{P_{(3+3)} A_{(3+3)}} G_{(3)}$
 (c) $\oplus \text{♀} K_{(5)} \overbrace{C_{(5)} A_5} \underline{G}_{(2)}$
 (d) $\% \text{♀} C_{1+2+(2)} A_{(9)+1} \underline{G}_{(1)}$

25. Identify the correct features of Mango and Coconut fruits. **(2020 Covid Re-NEET)**
 (i) In both fruit is a drupe
 (ii) Endocarp is edible in both
 (iii) Mesocarp in Coconut is fibrous, and in Mango it is fleshy
 (iv) In both, fruit develops from monocarpellary ovary

Select the correct option from below:

- (a) (i), (ii) and (iii) only
(b) (i) and (iv) only
(c) (i) and (ii) only
(d) (i), (iii) and (iv) only
- 26.** Placentation in which ovules develop on the inner wall of the ovary or in peripheral part, is **(2019)**
(a) Basal (b) Axile
(c) Parietal (d) Free central
- 27.** Pneumatophores occur in **(2018)**
(a) Halophytes
(b) Free-floating hydrophytes
(c) Carnivorous plants
(d) Submerged hydrophytes
- 28.** Sweet potato is a modified **(2018)**
(a) Stem
(b) Adventitious root
(c) Tap root
(d) Rhizome
- 29.** Root hairs develop from the region of: **(2017)**
(a) Maturation
(b) Elongation
(c) Root cap
(d) Meristematic activity
- 30.** Coconut fruit is a: **(2017)**
(a) Drupe (b) Berry
(c) Nut (d) Capsule
- 31.** In Bougainvillea, thorns are the modifications of: **(2017)**
(a) Stipules
(b) Adventitious root
(c) Stem
(d) Leaf
- 32.** The morphological nature of the edible part of coconut is: **(2017)**
(a) Perisperm (b) Cotyledon
(c) Endosperm (d) Pericarp
- 33.** Opposite type of phyllotaxy is not present in: **(2017)**
(a) Mango (b) Guava
(c) Calotropis (d) Mint
- 34.** An inflorescence with younger flowers at the base and the older one at its apex is known as: **(2017)**
(a) Hypanthodium (b) Head
(c) Racemose (d) Cymose
- 35.** Tetradynamous stamens are characteristic of: **(2017)**
(a) Brassicaceae (b) Solanaceae
(c) Fabaceae (d) Liliaceae
- 36.** In roots, absorption of water and minerals mostly occurs in the: **(2017)**
(a) Root cap
(b) Region of elongation
(c) Region of maturation
(d) Meristematic region
- 37.** Free-central placentation is found in: **(2016 - II)**
(a) Brassica (b) Citrus
(c) Dianthus (d) Argemone
- 38.** Radial symmetry is found in the flowers of: **(2016 - II)**
(a) Pisum (b) Cassia
(c) Brassica (d) Trifolium
- 39.** How many plants among Indigofera, Sesbania, Salvia, Allium, Aloe, mustard, groundnut, radish, gram and turnip have stamens with different lengths in their flowers? **(2016 - II)**
(a) Five (b) Six
(c) Three (d) Four
- 40.** The term 'Polyadelphous' is related to: **(2016 - II)**
(a) Corolla (b) Calyx
(c) Gynoecium (d) Androecium
- 41.** Stems modified into flat green organs performing the functions of leaves are known as: **(2016 - I)**
(a) Cladodes (b) Phyllodes
(c) Phylloclades (d) Scales
- 42.** Which of the following is not a stem modification? **(2016 - I)**
(a) Pitcher of Nepenthes
(b) Thorns of Citrus
(c) Tendrils of cucumber
(d) Flattened structures of Opuntia
- 43.** Tricarpellary, syncarpous gynoecium is found in flowers of: **(2016 - I)**
(a) Liliaceae (b) Solanaceae
(c) Fabaceae (d) Poaceae
- 44.** The standard petal of a papilionaceous corolla is also called: **(2016 - I)**
(a) Carina (b) Pappus
(c) Vexillum (d) Corona

- 45.** Leaves become modified into spines in: **(2015)**
 (a) Onion (b) Silk Cotton
 (c) Opuntia (d) Pea
- 46.** Keel is the characteristic feature of flower of: **(2015)**
 (a) Aloe (b) Tomato
 (c) Tulip (d) Indigofera
- 47.** Perigynous flowers are found in: **(2015)**
 (a) China rose (b) Rose
 (c) Guava (d) Cucumber
- 48.** Ovary is inferior in: **(2015)**
 (a) Guava (b) Rose
 (c) China rose (d) Peach
- 49.** Flowers are unisexual in: **(2015 Re)**
 (a) Cucumber (b) China rose
 (c) Onion (d) Pea
- 50.** Roots play insignificant role in absorption of water in: **(2015 Re)**
 (a) Pistia (b) Pea
 (c) Wheat (d) Sunflower
- 51.** Axile Placentation is present in: **(2015 Re)**
 (a) Lemon (b) Pea
 (c) Argemone (d) Dianthus
- 52.** Among china rose, mustard, brinjal, potato, onion and tulip, how many plants have superior ovary? **(2015 Re)**
 (a) Six (b) Three
 (c) Four (d) Five
- 53.** An aggregate fruit is one which develops from: **(2014)**
 (a) Multicarpellary superior ovary
 (b) Multicarpellary syncarpous gynoecium
 (c) Multicarpellary apocarpus gynoecium
 (d) Complete inflorescence
- 54.** Which one of the following statements is correct? **(2014)**
 (a) A sterile pistil is called a staminode
 (b) The seed in grasses is not endospermic
 (c) Mango is a parthenocarpic fruit
 (d) A proteinaceous aleurone layer is present in maize grain
- 55.** When the margins of sepals or petals overlap one another without any particular direction, the condition is termed as: **(2014)**
 (a) Valvate (b) Vexillary
 (c) Imbricate (d) Twisted
- 56.** An example of edible underground stem is: **(2014)**
 (a) Potato (b) Carrot
 (c) Groundnut (d) Sweet potato
- 57.** Placenta and pericarp are both edible portions in: **(2014)**
 (a) Potato (b) Apple
 (c) Banana (d) Tomato
- 58.** Among bitter gourd, mustard, brinjal, pumpkin, china rose, Lupin, cucumber, sun hemp, gram, guava, bean, chili, plum, Petunia, tomato, rose, Withania somnifera, potato, onion, Aloe and tulip how many plants have hypogynous flower? **(2013)**
 (a) Eighteen (b) Six
 (c) Ten (d) Fifteen
- 59.** Seed coat is not thin, membranous in: **(2013)**
 (a) Gram (b) Maize
 (c) Coconut (d) Groundnut
- 60.** In China rose the flowers are: **(2013)**
 (a) Zygomorphic, epigynous with twisted aestivation
 (b) Actinomorphic, hypogynous with twisted aestivation
 (c) Actinomorphic, epigynous with valvate aestivation
 (d) Zygomorphic, hypogynous with imbricate aestivation