



മലയാളം

# ADDAPEDIA

To get free Live Classes,  
Materials Scan this QR Code &  
Download our Adda247 App

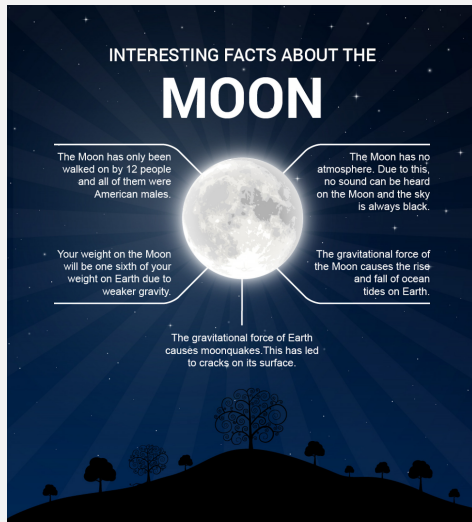


## Daily Current Affairs Encyclopedia

20 September 2023

### National and International News

#### Moonquakes



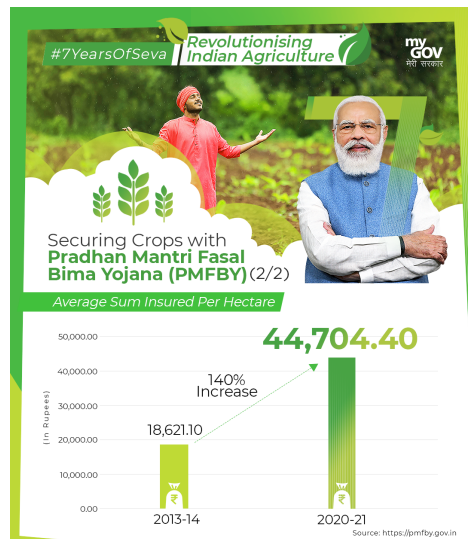
#### Key points about Moonquakes

- It is seismic tremors or vibrations that occur on the Moon's surface.
- **It is less intense than earthquakes on Earth.**
- The strongest moonquakes can reach magnitudes of up to 5.5 on the Richter scale, but most are much weaker.
- It is measured using seismometers placed on the Moon's surface by Apollo missions.
- It has helped scientists learn about the Moon's internal structure, composition, and history.

#### Did you know?

- The Moon has quakes too. They're not called earthquakes but moonquakes. They are caused by the gravitational influence of the Earth.
- Unlike quakes on Earth that last only a few minutes at most, moonquakes can last up to half an hour. They are much weaker than earthquakes though.

#### Pradhan Mantri Fasal Bima Yojana



#### In news:

- According to data, Pradhan Mantri Fasal Bima Yojana enrolments highest in 6 years.

#### Key points about the Scheme:

- **Launched in 2016.**
- It is a **centrally sponsored scheme.**
- Administered by the **Ministry of Agriculture and Farmers Welfare.**
- It replaced the National Agricultural Insurance Scheme (NAIS) and Modified National Agricultural Insurance Scheme (MNAIS).

**Eligibility:** Farmers including sharecroppers and tenant farmers growing notified crops in the notified areas are eligible for coverage.

#### Objectives:

- To provide insurance coverage and financial support to the farmers in the event of failure of any of the notified crops as a result of natural calamities, pests & diseases.
- To stabilize the income of farmers to ensure their continuance in farming.



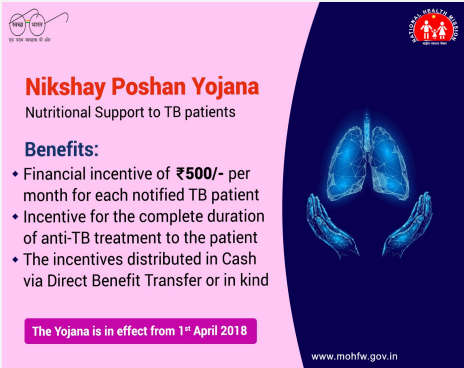
മലയാളം

ADDAPEDIA

To get free Live Classes,  
Materials Scan this QR Code &  
Download our Adda247 App



## Daily Current Affairs Encyclopedia

	<ul style="list-style-type: none"> <li>To encourage farmers to adopt innovative and modern agricultural practices.</li> <li>To ensure the flow of credit to the agriculture sector.</li> </ul> <p><b>Premium:</b></p> <ul style="list-style-type: none"> <li>There will be a uniform premium of only 2% to be paid by farmers for all Kharif crops and 1.5% for all Rabi crops.</li> <li>In the case of annual commercial and horticultural crops, the premium to be paid by farmers will be only 5%.</li> </ul>
<p><b>Evasive nutritional support for TB patients</b></p>  <p><b>Nikshay Poshan Yojana</b> Nutritional Support to TB patients</p> <p><b>Benefits:</b></p> <ul style="list-style-type: none"> <li>Financial incentive of ₹500/- per month for each notified TB patient</li> <li>Incentive for the complete duration of anti-TB treatment to the patient</li> <li>The incentives distributed in Cash via Direct Benefit Transfer or in kind</li> </ul> <p>The Yojana is in effect from 1<sup>st</sup> April 2018</p> <p>www.mohfw.gov.in</p>	<p><b>Context</b> According to recent report -</p> <ul style="list-style-type: none"> <li><b>Undernutrition is the leading risk factor for TB disease.</b></li> <li>Undernutrition contributes to 55% of annual TB incidence in India.</li> <li>45% of people in India are undernourished, accounting for nearly 1.2 million TB cases each year.</li> </ul> <p><b>Nikshay Poshan Yojna</b></p> <ul style="list-style-type: none"> <li>The NPY was <b>launched in 2018</b> by the <b>Ministry of Health and Family Welfare</b>.</li> <li>It aims to support every Tuberculosis (TB) Patient by <b>providing a Direct Benefit Transfer (DBT) of Rs 500 per month</b> for nutritional needs.</li> </ul> <p><b>Nikshay Mitra Initiative</b></p> <ul style="list-style-type: none"> <li>It is an <b>initiative under Pradhan Mantri TB Mukh Bharat Abhiyaan</b>.</li> <li>Aimed to provide aid to TB-afflicted patients on three levels of nutritional, additional diagnostic, and vocational support.</li> </ul> <p><b>Objective:</b></p> <ul style="list-style-type: none"> <li>It aims to eradicate the existing societal stigma and discrimination against TB patients, and provide them with much-needed nutritional and social support, and help them lead a normal life.</li> <li>It also aims to encourage elected representatives, corporations, NGOs, and individuals to come forward as donors/sponsors to help the patients complete their journey toward recovery.</li> </ul>



മലയാളം

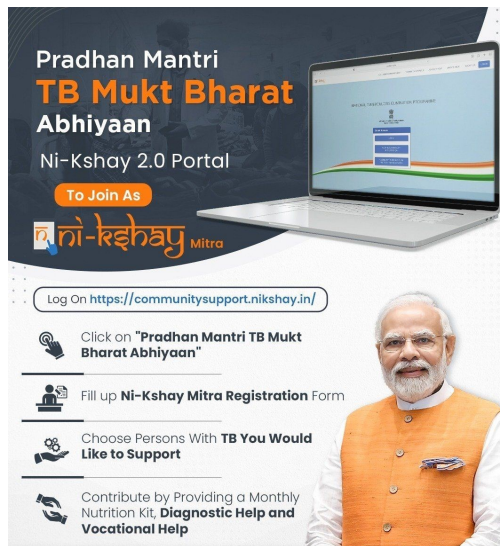
ADDAPEDIA

To get free Live Classes,  
Materials Scan this QR Code &  
Download our Adda247 App



## Daily Current Affairs Encyclopedia

### Ni-kshay 2.0 portal



### About Ni-kshay 2.0 portal

The Ni-kshay 2.0 portal provides a digital platform for extending community support to persons with TB and leveraging Corporate Social Responsibility (CSR) opportunities.

'Differentiated TB Care' as a part of the initiative is aimed at assessing and triaging patients to decide whether people with TB need ambulatory care or admission in a health facility.

### Global Biofuels Alliance (GBA)

### Key points

- GBA is an **India-led Initiative** to develop an alliance of Governments, International organizations and Industry to **facilitate the adoption of biofuels**.
- **Founding members** - India, Brazil and the US are the founding members of the alliance.
- This Alliance will be aimed at facilitating cooperation and intensifying the use of sustainable biofuels, including in the transportation sector.

### Did you know?

- India, the US and Brazil account for a total of 85 percent of the global ethanol production with the US holding 55 per cent share followed by Brazil 27 per cent and India 3 per cent.



മലയാളം

ADDAPEDIA

To get free Live Classes,  
Materials Scan this QR Code &  
Download our Adda247 App



## Daily Current Affairs Encyclopedia

### Establishing Global Biofuel Alliance (GBA)

India is looking to ramp up biofuel production capability in view of growing energy demand.



India's ethanol production capacity: **12.4 bn litres**

Molasses-based distilleries' capacity: **8.1 bn litres**

Grain-based distilleries capacity: **4.3 bn litres**



India, US and Brazil account for **85%** global ethanol production

State-run oil marketing companies paid **₹82,000 cr** to distillers in the past eight years, of which **₹48,000 cr** went to farmers

India's E20 fuel is available at **1,350** outlets, nationwide coverage by 2025

India to contribute **25%** to global energy demand growth till 2040.

#### India-Middle East-Europe Economic Corridor (IMEC)

##### Context

- A memorandum of understanding (MoU) was signed to establish the 'India-Middle East-Europe Economic Corridor' (IMEC) recently.

##### IMEC

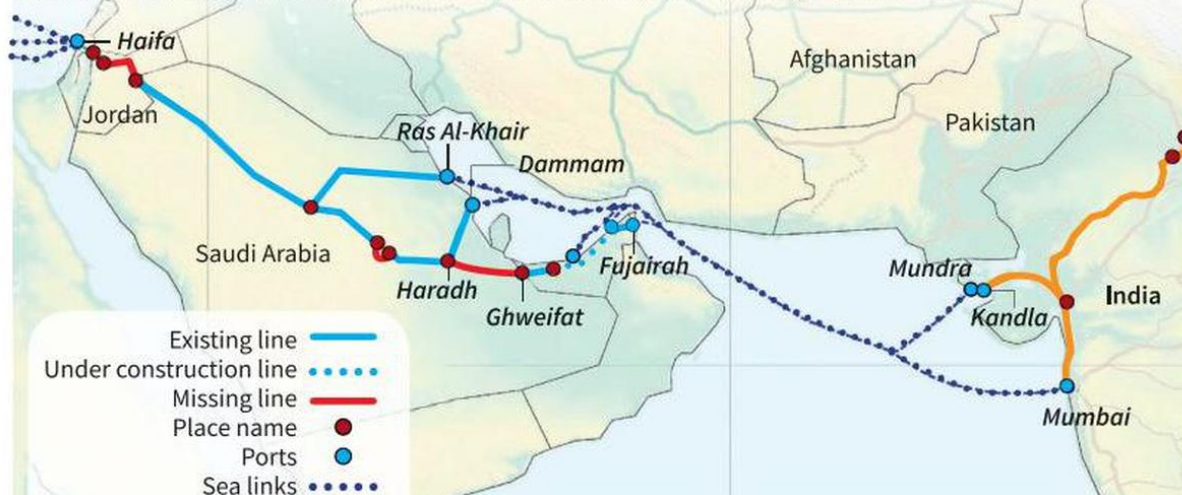
- IMEC is envisioned as a network of transport corridors comprising railway lines and sea lanes to promote economic integration between Asia, the Arabian Gulf, and Europe.
- This initiative is part of the Partnership for Global Infrastructure Investment (PGII).
- It aims to fund infrastructure projects in developing countries through public and private investments, offering an alternative to the BRI.





### Corridor trajectory

The map shows the multiple routes being considered for the India-Middle East-EU Corridor. Indian ports on the west coast of India could be connected to five shortlisted ports in West Asia



#### Significance of Middle East Economic Corridor

**Countries Involved** - India, Saudi Arabia, UAE Countries, USA, European Union, Germany, Italy and France, and Israel through port.

#### Key Facts:

1. Currently all trade between India and Europe happens via sea route through the Suez Canal.
2. Due to the corridor, Indian goods can reach Europe in 10 days - 40% faster than the Suez Canal.
3. Ports involved:
  - India - Kandla, Mundhra, and Jawaharlal Nehru port
  - Saudi Arabia: - Damman and Ras Al Khair
  - UAE Countries - Fujairah, Jebel Ali, and Abu Dhabi.
  - Israel - Haifa
  - European - Messina (Italy) , Marseille(France) and Piraeus(Greece) .

#### Did you know?

- Though Israel and the UAE are part of this corridor, they were rivals for a long time. And have signed the **Abraham Accord** to conclude peace.



**20 September 2023**

**Kerala Regional News**

**KUFOS develops tech for captive breeding of Indigo Barb**



**In News:** KUFOS develops tech for captive breeding of ornamental fish

- **Scientists at the Kerala Fisheries University (KUFOS)** have successfully developed technology for the captive breeding of the **Indigo Barb** (*Pethia setnai*), an exquisite ornamental fish native to western India.

**Key Points:**

- Indigo Barb is distinguished by its olive-gray body adorned with two distinctive vertical bands.
- This rare species was once exclusively found in the **freshwater streams of Goa and Karnataka**.
- The international ornamental fish market values these unique fish at approximately \$3 per seedling.
- Due to high demand, the Indigo Barb has fallen prey to an unregulated aquarium trade, while its natural habitat has come under mounting pressure from tourism, urbanization, and agricultural pollution.

**Did you know?**

- *Pethia setnai*, commonly known as Indigo barb, native to the Western Ghats of India, has been gradually declining due to habitat destruction.
- It is currently listed as **'Vulnerable'** by the IUCN.

**Tenkasi model now in Kerala**

**In News:** Vembu's Zoho set to replicate Tenkasi model in Kerala

- Sridhar Vembu, the business magnate who built the multi-billion-dollar Zoho Corporation in Mathalamparai village of Tenkasi in Tamil Nadu, away from the metro city of Chennai, is set to replicate the model in rural Kerala.

**Key Points:**

- Vembu, a Padma Shri recipient, will establish a Zoho Corp research and development (R&D) center in Kottarakkara in Kollam
- Zoho Crop Research and Development (R&D) will be providing jobs for about 1,000 people.

**Vemb Zoho**

**Key Points**

- Vemb Zoho is an Indian-American software company founded in 1996 by Sridhar Vembu.
- The company is headquartered in Chennai, India, and has offices all over the world. Zoho offers a suite of over 50 cloud-based business software applications, including CRM, project management, email, and more.




മലയാളം

# ADDAPEDIA

To get free Live Classes,  
Materials Scan this QR Code &  
Download our Adda247 App



## Daily Current Affairs Encyclopedia

	<ul style="list-style-type: none"> <li>Zoho is known for its affordable pricing, easy-to-use interface, and customer support. The company has over 80 million users worldwide, including businesses of all sizes.</li> </ul>
<b>Tenkasi model</b>	<p><b>Key points:</b></p> <ul style="list-style-type: none"> <li>The Tenkasi Model is a unique approach to rural development pioneered by Zoho Corporation, a global software company headquartered in Chennai, India.</li> <li>In 2011, Zoho established a technology hub in the rural town of Tenkasi, Tamil Nadu, with the goal of creating jobs and opportunities for local residents.</li> </ul>
<b>Kerala's second Vande Bharat Express</b>	<p><b>In News:</b> Kerala's second Vande Bharat Express to run services from September 24</p> <ul style="list-style-type: none"> <li>Kerala's second Vande Bharat Express will be inaugurated by Prime Minister Narendra Modi on September 24</li> <li>The train service will depart from Kasaragod at 7 am and shall reach Thiruvananthapuram by 3.05 pm.</li> </ul> <p><b>Key Points:</b></p> <ul style="list-style-type: none"> <li>Vande Bharat Express is a semi-high-speed train set designed, developed, and <b>manufactured by Integral Coach Factory (ICF) in India.</b></li> <li>It is the fastest train in India with a <b>maximum speed of 180 km/h</b> (112 mph).</li> <li>The Vande Bharata Express is also the first train in India to be equipped with a train management system (TMS), which provides real-time information about the train's operation to the driver and passengers.</li> </ul>
<b>UAE-Kerala cruise</b>  	<p><b>In News:</b> UAE-Kerala cruise for Rs 10,000 on cards</p> <ul style="list-style-type: none"> <li>Malayali expats in the UAE will be able to travel home on a luxury cruise, and that too at affordable fares</li> </ul> <p><b>Key Points:</b></p> <ul style="list-style-type: none"> <li>A private cruise, linking the UAE to Kerala and having a passenger capacity of around 1,300, is set to be launched by December</li> <li>As per the plan, the one-way fare for the three-day trip will be around Rs 10,000. Passengers will be allowed to carry baggage up to 200kg.</li> </ul>
<b>Train management system (TMS)</b>	<p><b>Key points:</b></p> <ul style="list-style-type: none"> <li>A Train Management System (TMS) is a computer-based system that helps railway operators manage train traffic more efficiently and safely.</li> </ul>



മലയാളം

ADDA247

To get free Live Classes,  
Materials Scan this QR Code &  
Download our Adda247 App



## Daily Current Affairs Encyclopedia

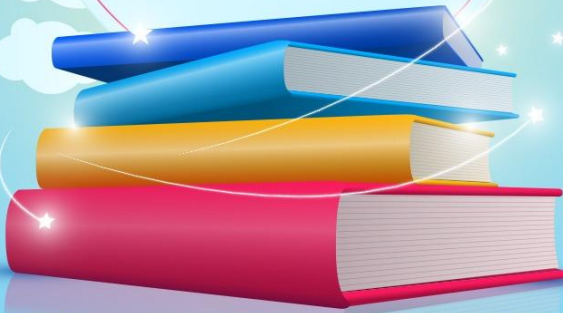
- It is a real-time system that collects data from various sources, such as track circuits, and signal systems, and trains themselves, and uses this data to monitor train movements and make decisions about how to best manage traffic.

TMS systems can be used to perform a variety of functions, including:

1. Monitoring train movements in real-time
2. Tracking train delays and disruptions
3. Planning and managing train routes and schedules
4. Diverting trains around disruptions
5. Optimizing train speeds and schedules
6. Providing information to passengers about train delays and disruptions



**20%  
DISCOUNT  
ON ALL  
TEST SERIES &  
BOOKS**



**20<sup>th</sup> SEPTEMBER**

**Copyright © by Adda247**

All rights are reserved. No part of this document may be reproduced, stored in a retrieval system or transmitted in any form or by any means, electronic, mechanical, photocopying, recording or otherwise, without prior permission of Adda247.